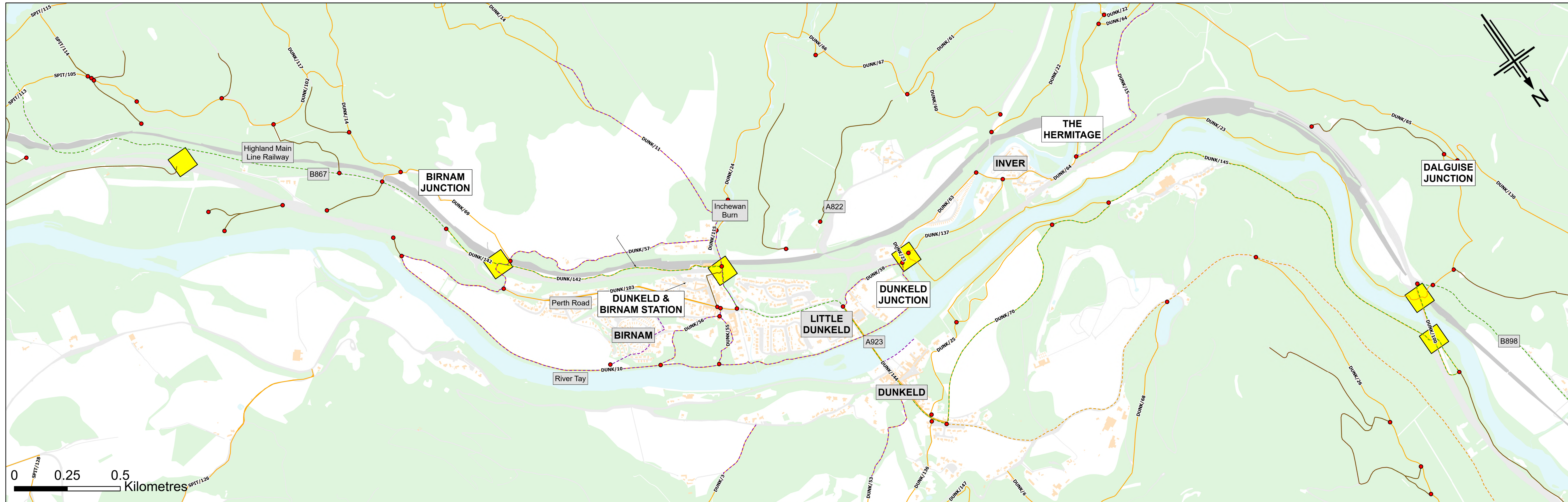
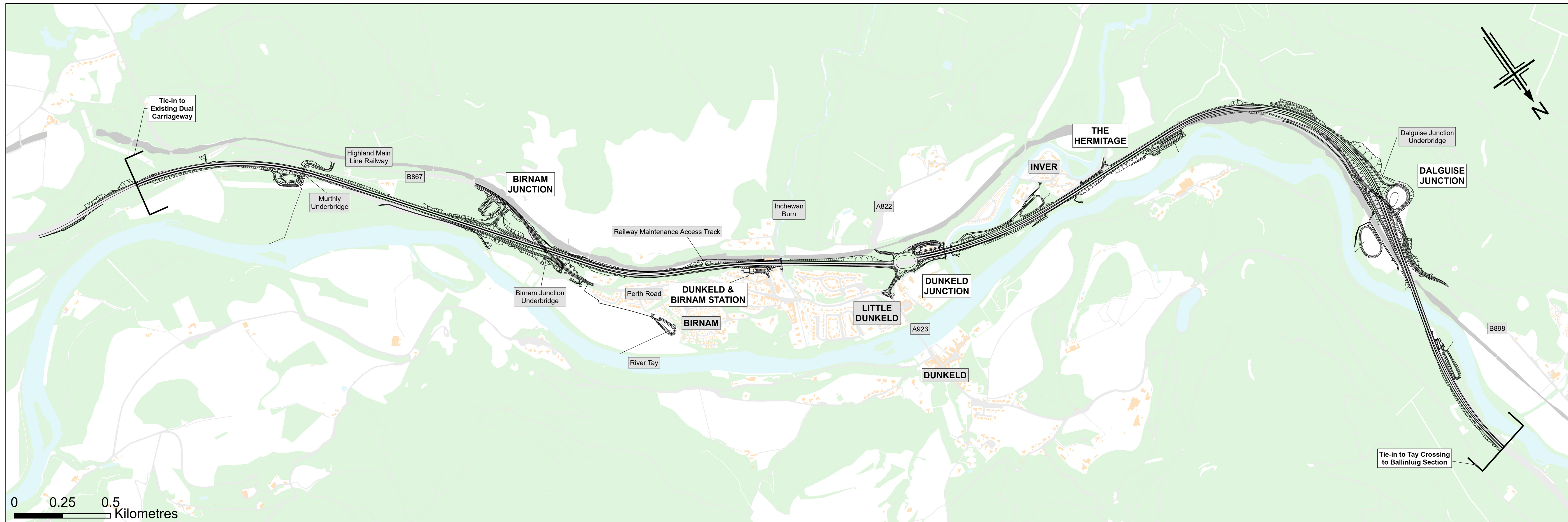


# PASS OF BIRNAM TO TAY CROSSING



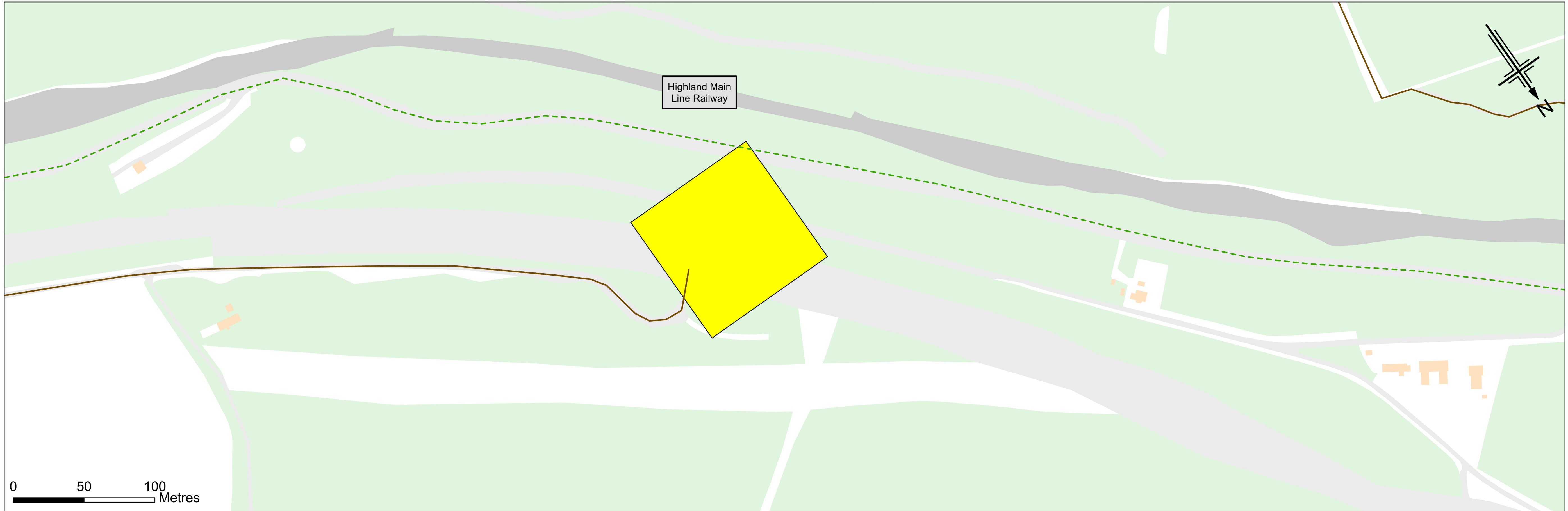
- Legend**
- Effects on All Travellers**
- DMRB Stage 3 (P3, P4, P5)
  - Core paths (2016)
  - Existing crossings
  - Local Paths
  - National Cycle Route
  - Regional Cycle Route
  - Rights of Way
  - Path intersection point
  - Core Paths (Scotland, 2022)



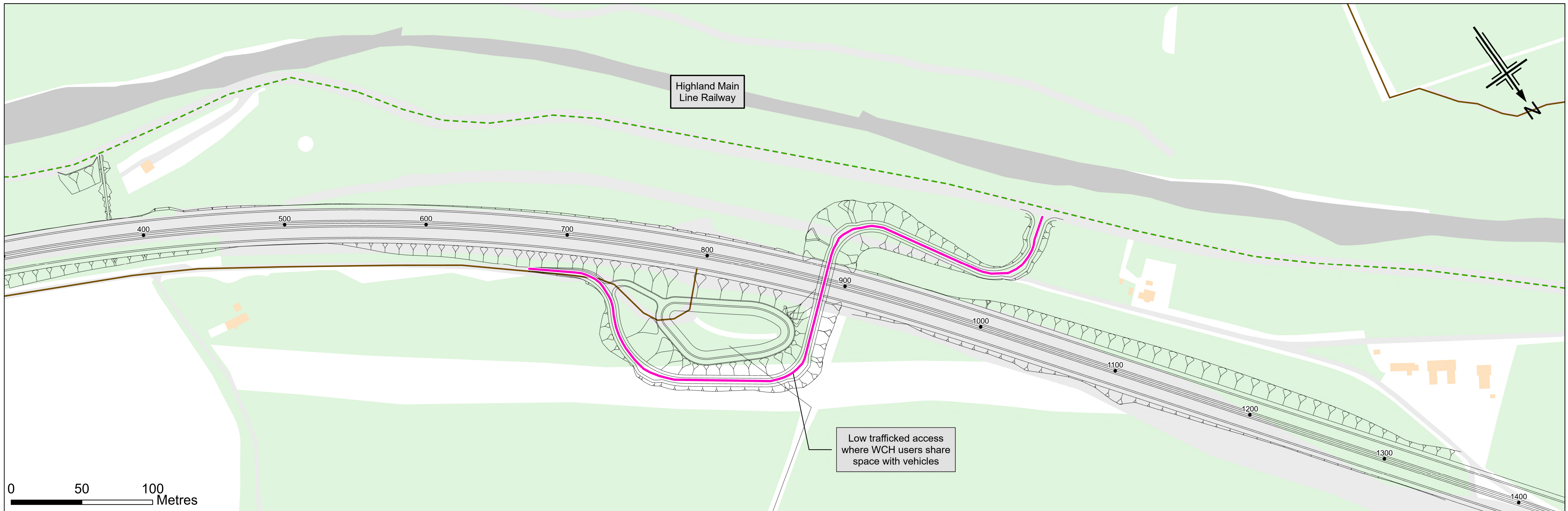
**DRAFT**



# MURTHLY ESTATE ACCESS TRACK



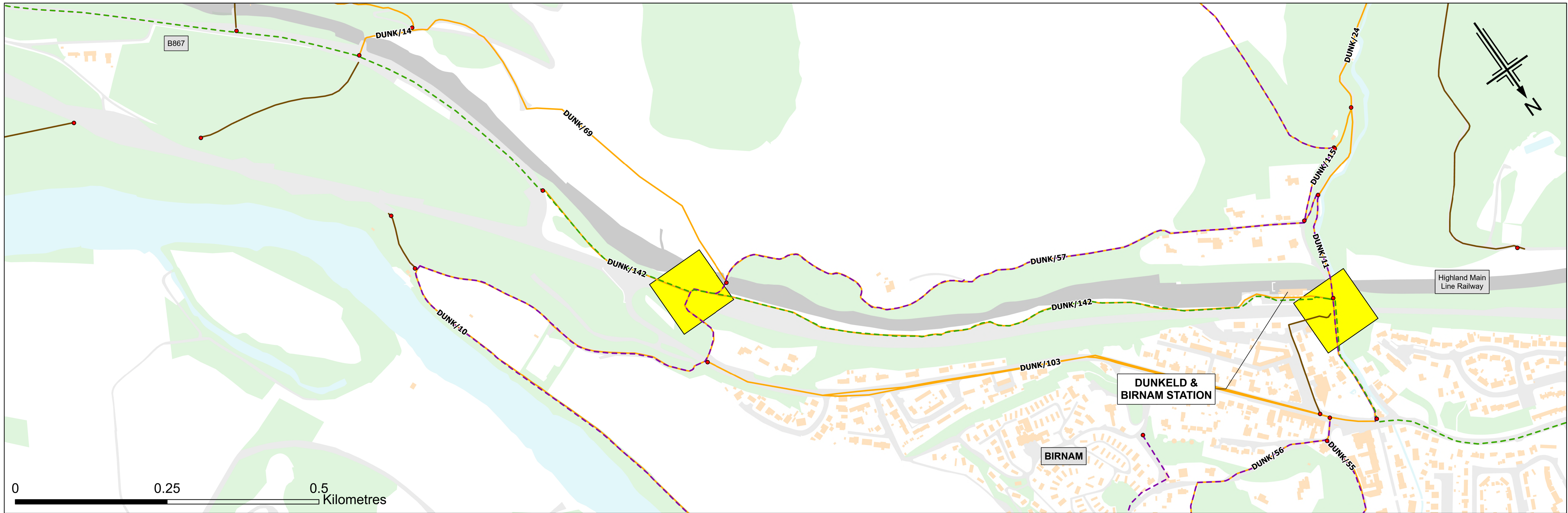
- Legend**
- WCH Provisions
  - Effects on All Travellers**
  - DMRB Stage 3 (P3, P4, P5)
  - Core paths (2016)
  - Existing crossings
  - Local Paths
  - National Cycle Route
  - Regional Cycle Route
  - Path intersection point
  - Rights of Way
  - Core Paths (Scotland, 2022)



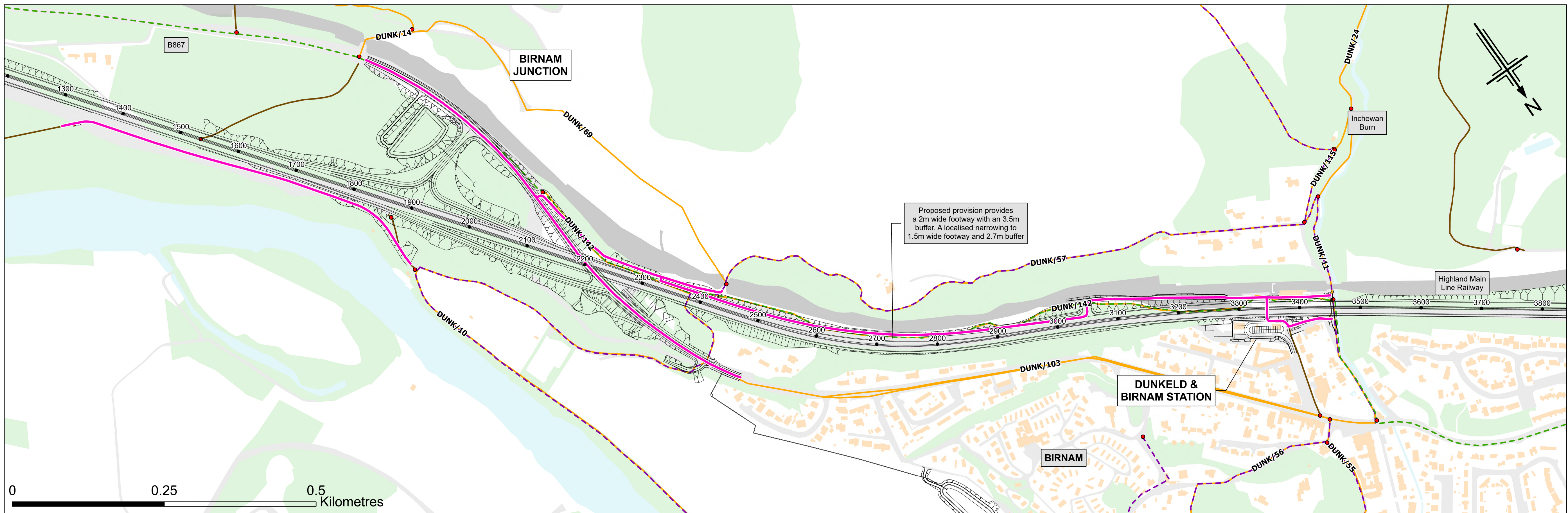
**DRAFT**



# BIRNAM JUNCTION TO DUNKELD & BIRNAM STATION

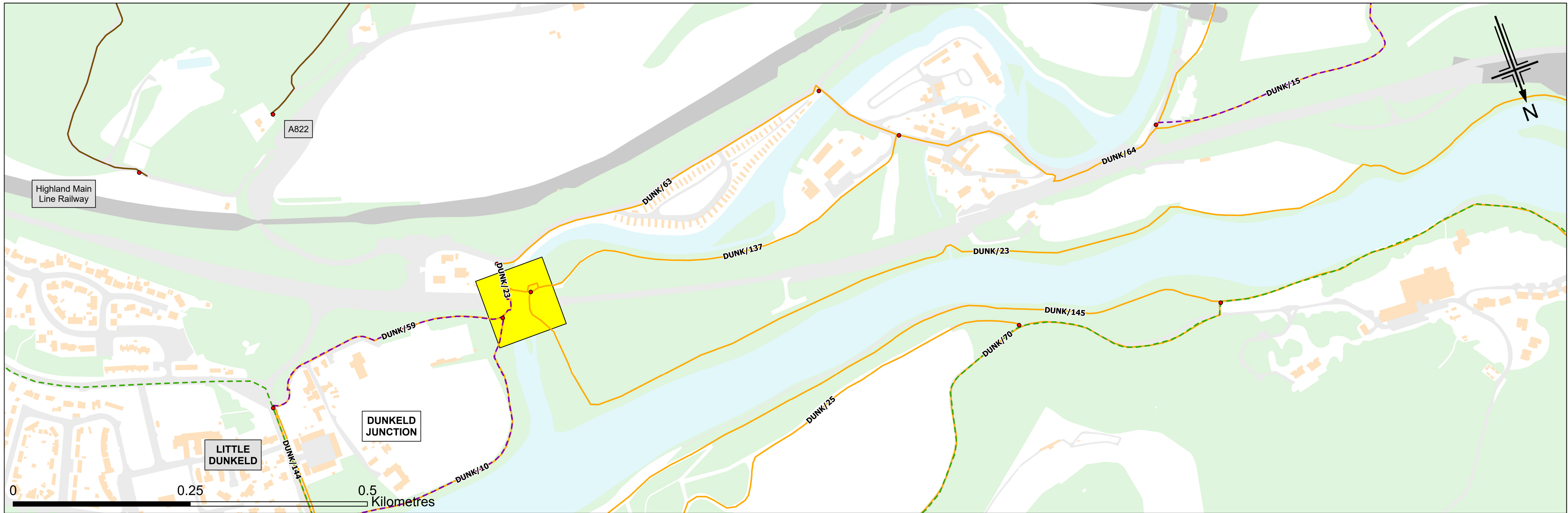


- Legend**
- WCH Provisions
  - Effects on All Travellers**
  - DMRB Stage 3 (P3, P4, P5) Core paths (2016)
  - Existing crossings
  - Local Paths
  - - - National Cycle Route
  - - - Regional Cycle Route
  - Path intersection point
  - - - Rights of Way
  - - - Core Paths (Scotland, 2022)

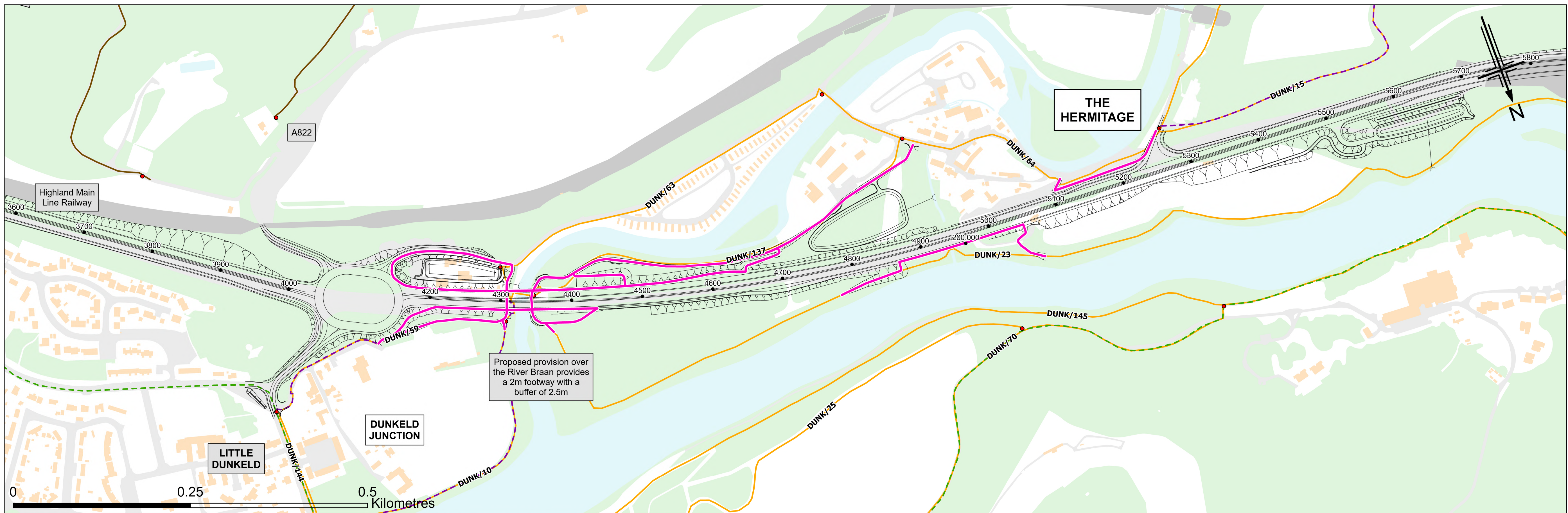




# DUNKELD JUNCTION TO INVER



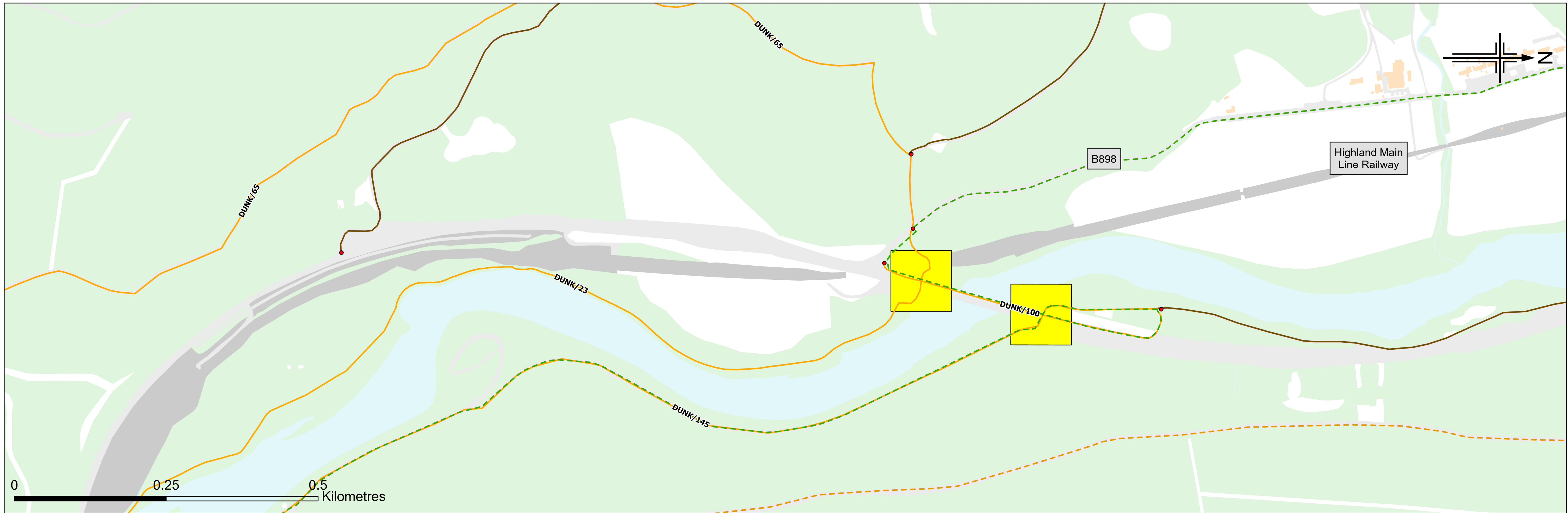
- Legend**
- WCH Provisions
  - Effects on All Travellers**
  - DMRB Stage 3 (P3, P4, P5)
  - Core paths (2016)
  - Existing crossings
  - Local Paths
  - National Cycle Route
  - Regional Cycle Route
  - Path intersection point
  - Rights of Way
  - Core Paths (Scotland, 2022)



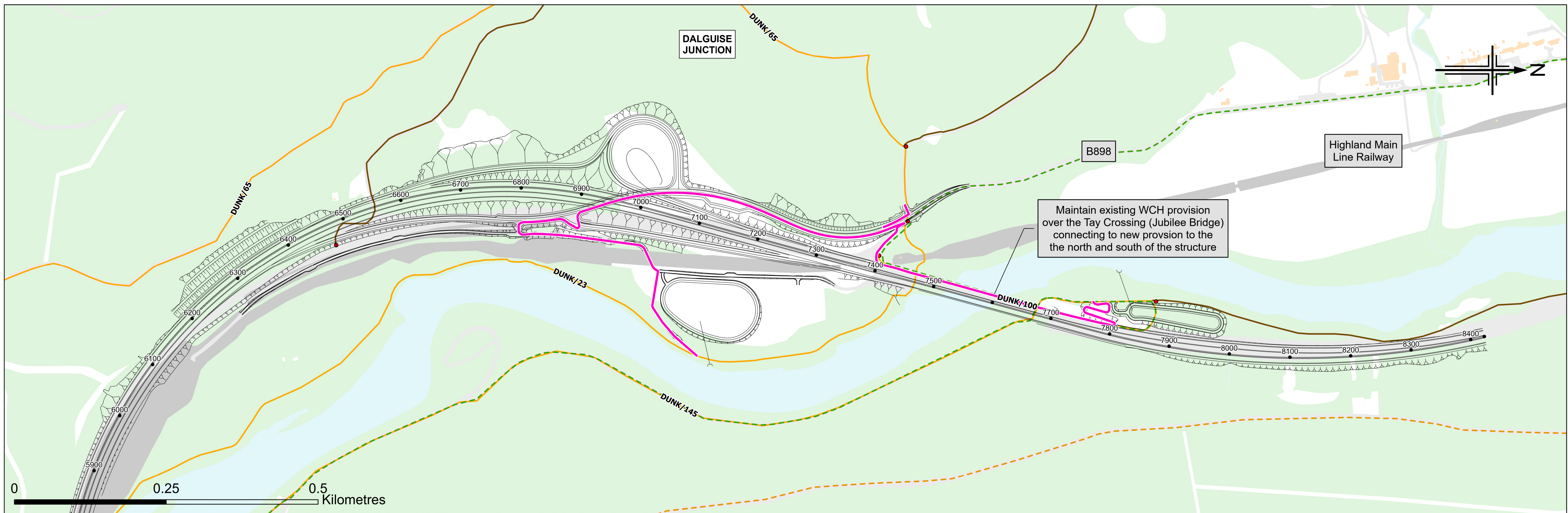
**DRAFT**



# DALGUISE JUNCTION AND TAY CROSSING (JUBILEE BRIDGE)

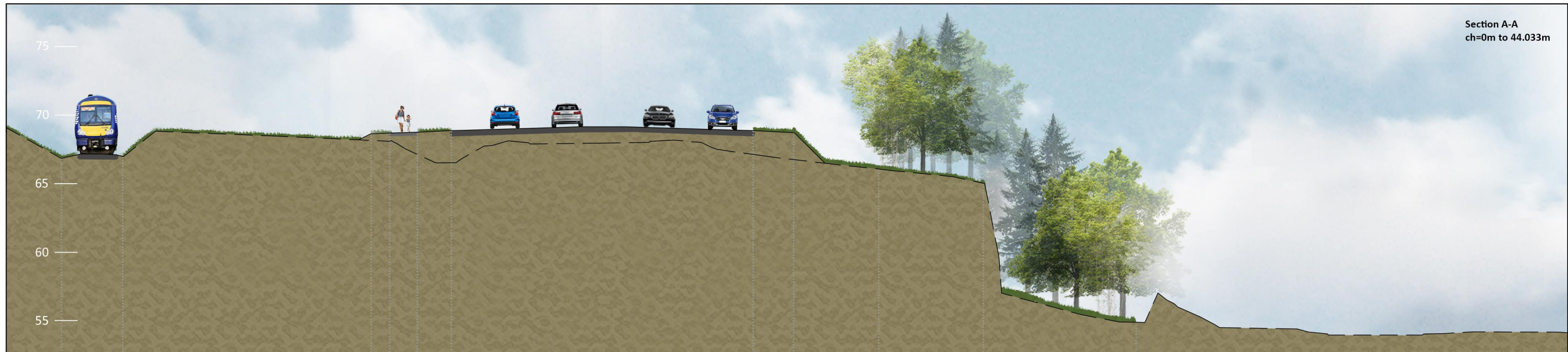


- Legend**
- WCH Provisions
  - DMRB Stage 3 (P3, P4, P5)
  - Core paths (2016)
  - Existing crossings
  - Local Paths
  - National Cycle Route
  - Regional Cycle Route
  - Path intersection point
  - Rights of Way
  - Core Paths (Scotland, 2022)

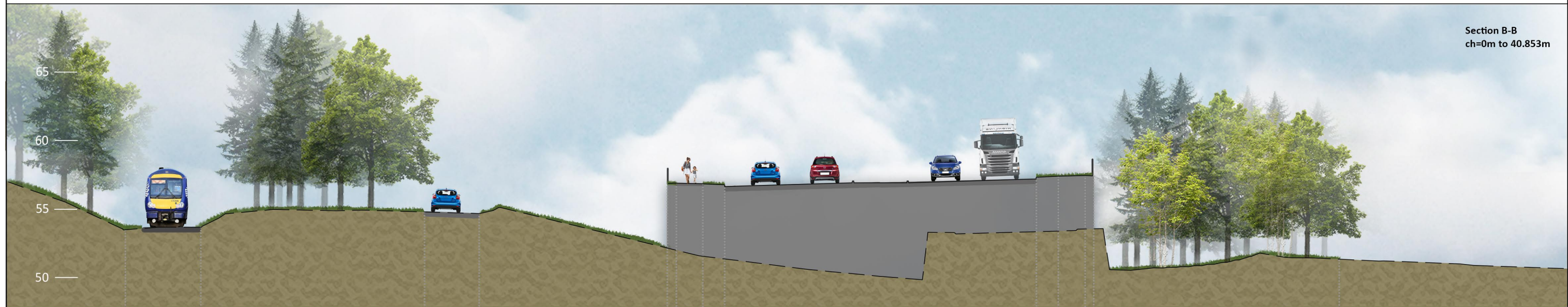


**DRAFT**

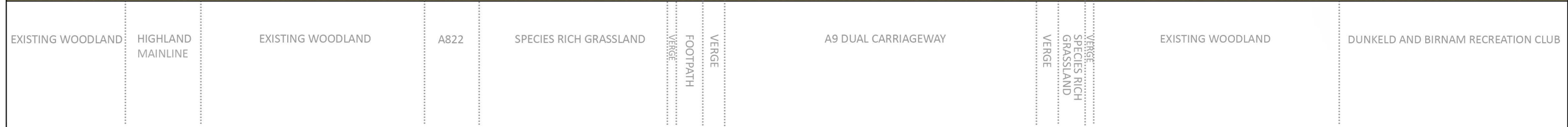




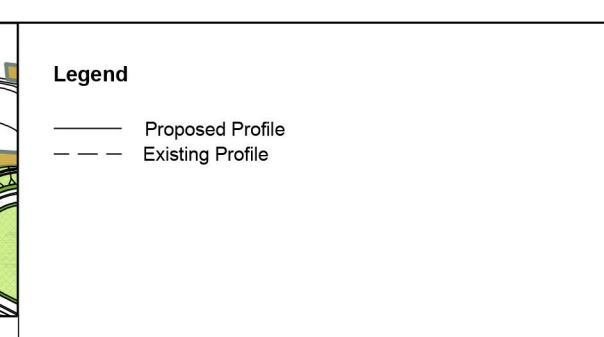
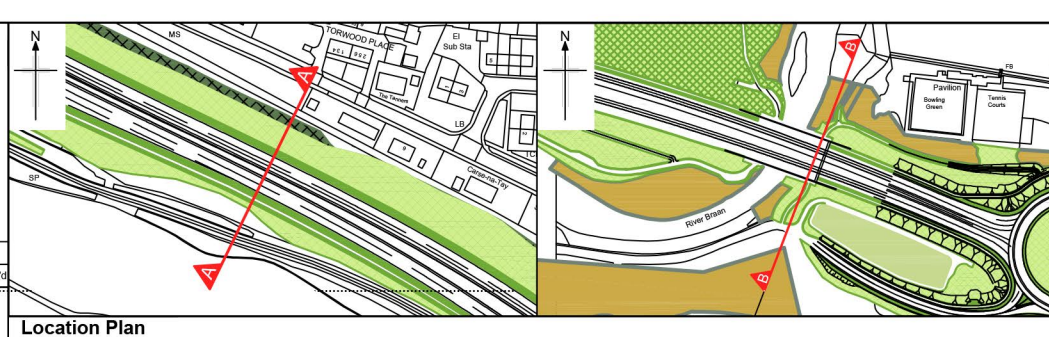
Section A-A  
ch=0m to 44.033m



Section B-B  
ch=0m to 40.853m



P01	AUG 2024	For Review and Comment	SB	KP	TP	EM
Rev	Rev. Date	Purpose of revision	Drawn	Checked	Rev'd	Apprv'd



**Jacobs**  
95 Bothwell St, Glasgow, G2 7HX  
Tel: +44(0)141 243 8000 Fax: +44(0)141 226 3109  
www.jacobs.com

Client: **TRANSPORT SCOTLAND**  
CORRIDOR ALBA

Project: **A9 DUALING**  
TAY TO TAY CROSSING

Drawing title: **A9 Pass of Birnam to Tay Crossing Typical Cross Sections of Walkers, Wheelers, Cyclists and Horse-riders (WCH) Provision**

Drawing status: **For Information**

Scale: **NTS @ A3** | **DO NOT SCALE**

Jacobs No: **B2140002**

Drawing number: **Figure 1**

Copyright Government License: To view this license, visit: https://www.nationalarchives.gov.uk/uk-informations-governments-licence/ or email: go@nationalarchives.gov.uk. Where we have identified any third party copyright information you will need to obtain permission from the copyright holders concerned. Location: This drawing has been prepared on behalf of, and for the exclusive use of, Jacobs Client, and is subject to, and issued in accordance with, the provisions of the contract between Jacobs and the Client. Jacobs accepts no liability or responsibility whatsoever for, or in respect of, any use of, or reliance upon, this drawing by any third party.