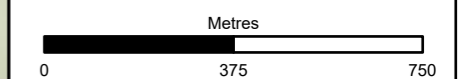


- Survey Area (100m)
- Proposed Scheme
- Works Boundary**
- Long Term Solution**
- Permanent Works
- Permanent Works - Water and SuDS
- Operational Boundary
- Operational Boundary - Water and SuDS
- Old Military Road Improvements**
- Permanent Works
- Operational Boundary
- Operational Boundary - Water and SuDS
- Access Only
- Mitigation Areas**
- Biodiversity Net Gain (BNG) and Natural Capital (NC) Enhancement Sites
- Ecological Mitigation Receptor Sites
- Red Squirrel Evidence**
- Scottish Wildlife Trust Feeding Station
- ▲ Chewed Cones
- ◆ Potential Red Squirrel Drey
- ⬠ Tree Feature with Potential for Red Squirrel



Subsidiary: Authorised and Accepted – Stage 3 Status: A3

Client: **TRANSPORT SCOTLAND**
COMHDHAIL ALBA

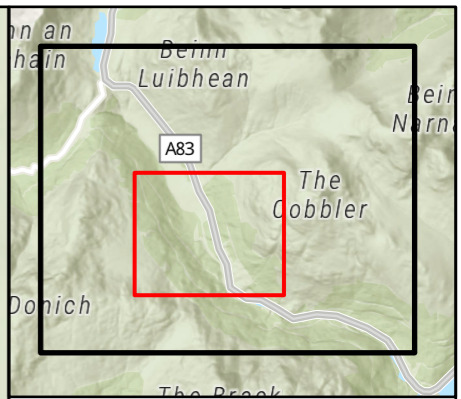
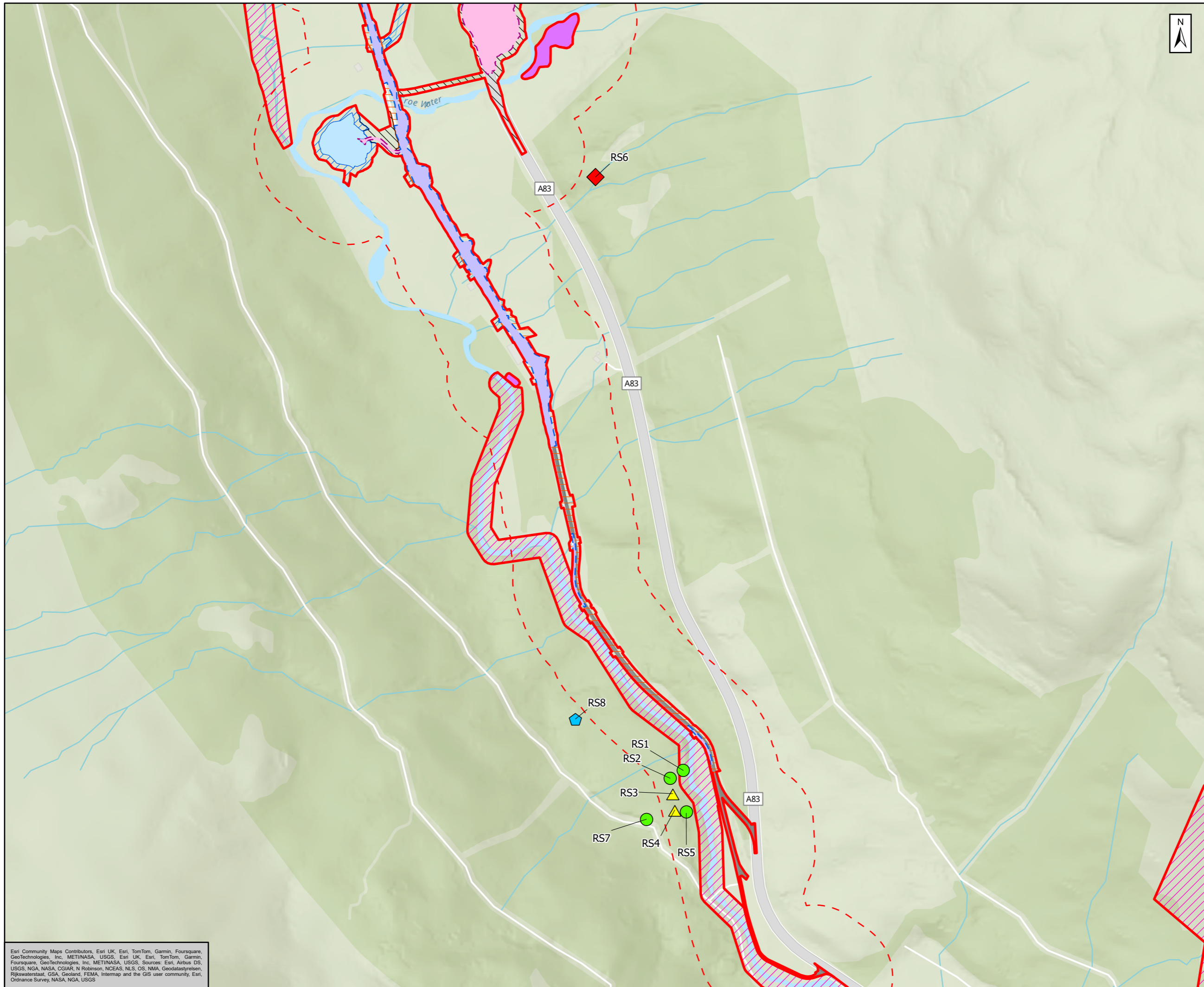
Project Title: **A83 Rest and Be Thankful**

AtkinsRéalis *WSP*

Title: **Figure 11.10b
Red Squirrel Survey Results
Page 1 of 2**

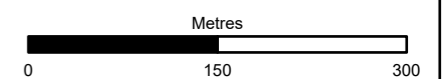
Scale: 1:15,000	Drawn: ET	Checked: RT	Approved: LG	Authorised: MR
Document Number: A83AAB-AWJ-EAC-LTS_GEN-DR-VT-000343	Project: A83AAB-AWJ-EAC-LTS_GEN-DR-VT-000343	Originator: [blank]	Volume: [blank]	Revision: C01
Location: [blank]	Type: [blank]	Role: [blank]	Number: [blank]	[blank]

Esri, Intermap, NASA, NGA, USGS, Esri Community Maps Contributors, Esri UK, Esri, TomTom, Garmin, Foursquare, GeoTechnologies, Inc, METI/NASA, USGS, Esri UK, Esri, TomTom, Garmin, Foursquare, GeoTechnologies, Inc, METI/NASA, USGS



- Survey Area (100m)
- Proposed Scheme
- Works Boundary**
- Long Term Solution**
- Permanent Works
- Permanent Works - Water and SuDS
- Operational Boundary
- Operational Boundary - Water and SuDS
- Old Military Road Improvements**
- Permanent Works
- Operational Boundary
- Operational Boundary - Water and SuDS
- Access Only
- Mitigation Areas**
- Biodiversity Net Gain (BNG) and Natural Capital (NC) Enhancement Sites
- Ecological Mitigation Receptor Sites
- Red Squirrel Evidence**
- Scottish Wildlife Trust Feeding Station
- ▲ Chewed Cones
- ◆ Potential Red Squirrel Drey
- ♣ Tree Feature with Potential for Red Squirrel

Note: The BNG and NC sites are shown for context, baseline information relating to these areas is covered in Volume 4, Appendix 11.16 Enhancement Site Survey Report.



Subsidiary	Status
Authorised and Accepted – Stage 3	A3



Project Title
A83 Rest and Be Thankful



Title
**Figure 11.10b
Red Squirrel Survey Results
Page 2 of 2**

Scale	1:6,000	Drawn	ET	Checked	RT	Approved	LG	Authorised	MR
Document Number	Project		Originator	Volume		Revision			
A83AAB-AWJ-EAC-LTS_GEN-DR-VT-000343						C01			
Location	Type	Role	Number						

Esri Community Maps Contributors, Esri UK, Esri, TomTom, Garmin, Foursquare, GeoTechnologies, Inc, METI/NASA, USGS, Esri UK, Esri, TomTom, Garmin, Foursquare, GeoTechnologies, Inc, METI/NASA, USGS, Sources: Esri, Airbus DS, USGS, NGA, NASA, GGIAR, N Robinson, NCEAS, NLS, OS, NIMA, Geodatasystemen, Rijkswaterstaat, GSA, Geoland, FEMA, Intermap and the GIS user community, Esri, Ordnance Survey, NASA, NGA, USGS