

Not to Scale



Key:

The A86 Trunk Road (Kingussie) (20mph, 30mph and 40mph Speed Limits) Order 202[ ]:

Part 1 (20mph): —

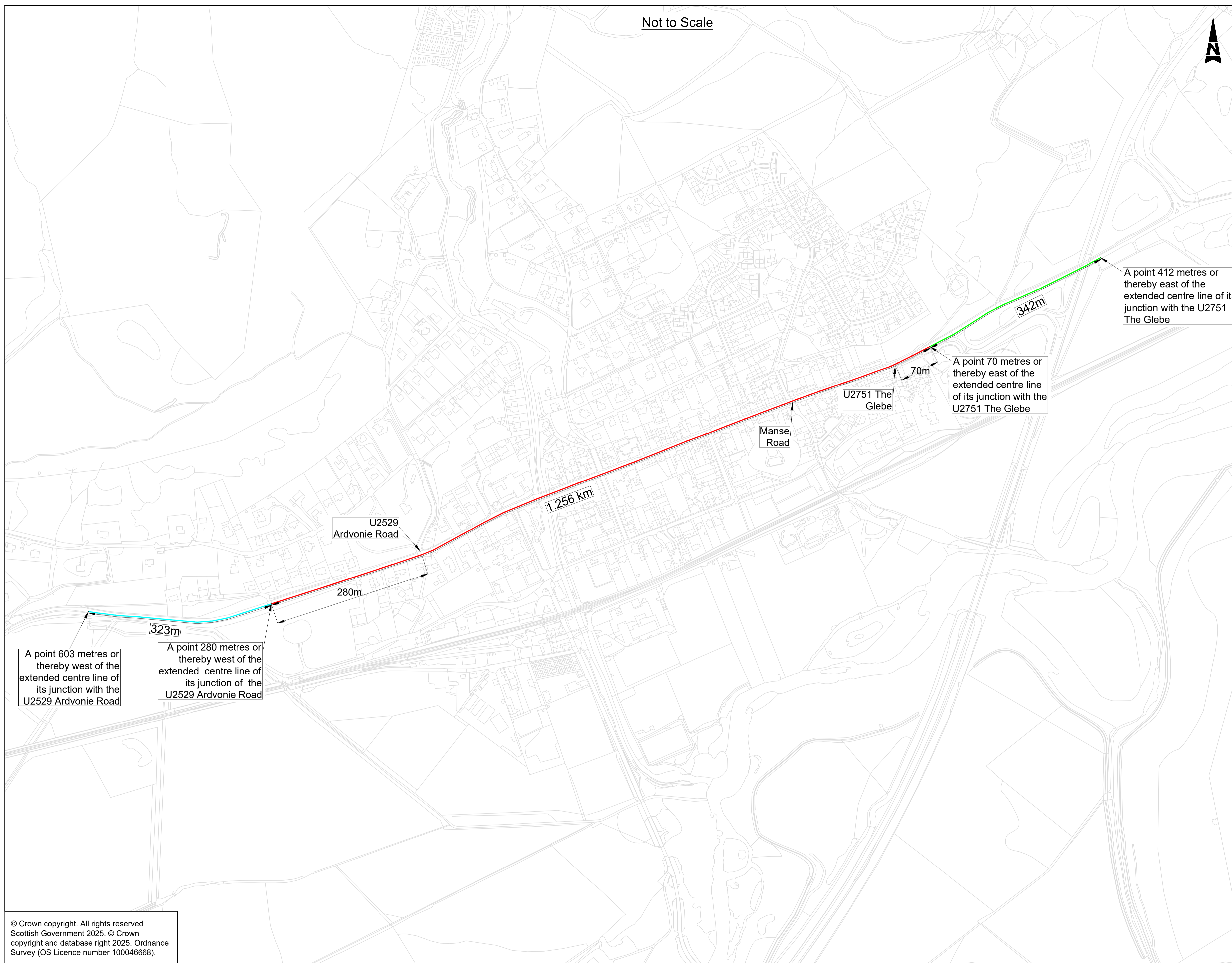
1. That length of the A86 Spean Bridge - Kingussie Trunk Road at Kingussie from a point 70 metres or thereby east of the extended centre line of its junction with the U2751 The Glebe to a point 280 metres or thereby west of the extended centre line of its junction with the U2529 Ardvonie Road, a distance of 1.256 kilometres or thereby.

Part 2 (30mph): —

2. That length of the A86 Spean Bridge -Kingussie Trunk Road at Kingussie from a point 70 metres or thereby east of the extended centre line of its junction with the U2751 The Glebe in a generally north easterly direction to a point 412 metres or thereby east of the extended centre line of its junction with the U2751 The Glebe, a distance of 342 metres or thereby.

Part 3 (40mph): —

3. That length of the A86 Spean Bridge - Kingussie Trunk Road at Kingussie from a point 280 metres or thereby west of the extended centre line of its junction of the U2529 Ardvonie Road in a generally west direction to a point 603 metres or thereby west of the extended centre line of its junction with the U2529 Ardvonie Road, a distance of 323 metres or thereby.



© Crown copyright. All rights reserved  
Scottish Government 2025. © Crown  
copyright and database right 2025. Ordnance  
Survey (OS Licence number 100046668).