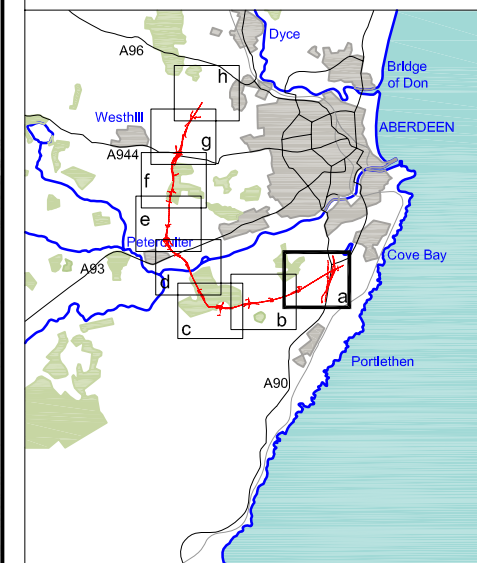


FIGURE 30.2a



LEGEND

- Proposed Route (Engineering Profile 04/05/07)
- 0-50m
- >50-100m
- >100-200m
- >200-300m
- >300-500m
- Sample Properties
- Non Residential Receptors
- Barriers

| Location Name | |
|--|------------------------------|
| BASE 2005 | |
| Do Minimum Year of Opening | Do Something Year of Opening |
| Do Minimum Design Year | Do Something Design Year |
| SIGNIFICANCE OF IMPACT Year of Opening | |
| SIGNIFICANCE OF IMPACT Design Year | |

JE JACOBS
 95 Bothwell Street, Glasgow, G2 7HX, UK
 Tel: 0141 204 2511 Fax: 0141 226 3109
 www.jacobsbabtie.com

Hamilton & McGregor
 ACUSTICS DIVISION

| | | |
|----------------|---|----------------|
| Client | Aberdeen Western Peripheral Route | |
| Project | Aberdeen Western Peripheral Route Environmental Statement, Part C - Southern Leg | |
| Title | Predicted LA10(18hours) dB with Mitigation (Receiver Height = 1.5m) Sheet 1 of 8 | |
| Drawing Status | FINAL | |
| JB No. | 0010332 | Revisions |
| Figure No. | FIGURE 30.2a | Date July 2007 |
| Scale | 1:10,000 | Drawn RB |
| | Checked BMcK | Approved SH |

| THE CLACHAN | |
|---------------------|------|
| 66.4 | |
| 66.9 | 65.8 |
| 67.2 | 66.1 |
| Moderate Beneficial | |
| Moderate Beneficial | |

| NOVARA | |
|---------------------|------|
| 62.6 | |
| 62.8 | 61.1 |
| 63.2 | 61.5 |
| Moderate Beneficial | |
| Moderate Beneficial | |

| WHISTLEBRAE FARMHOUSE | |
|-----------------------|------|
| 49.2 | |
| 49.2 | 57.5 |
| 49.2 | 58.2 |
| Substantial Adverse | |
| Substantial Adverse | |

| THE BEECHES | |
|---------------------|------|
| 40.8 | |
| 40.8 | 57.0 |
| 40.8 | 58.2 |
| Substantial Adverse | |
| Substantial Adverse | |

| BRAE VIEW | |
|----------------|------|
| 61.7 | |
| 63.3 | 63.3 |
| 63.6 | 63.7 |
| No Benefit | |
| Slight Adverse | |

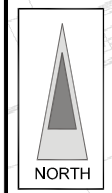
| DUFFSHILL | |
|---------------------|------|
| 40.8 | |
| 40.8 | 54.3 |
| 40.8 | 55.6 |
| Substantial Adverse | |
| Substantial Adverse | |

| TURNAMIDDLE HOUSE | |
|---------------------|------|
| 41.4 | |
| 41.4 | 52.7 |
| 41.4 | 53.2 |
| Substantial Adverse | |
| Substantial Adverse | |

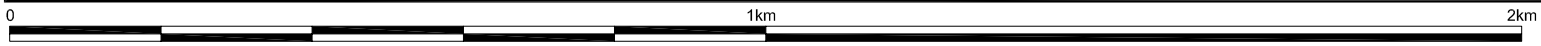
| 4 HAREMOSS STEADINGS | |
|----------------------|------|
| 37.7 | |
| 37.7 | 56.7 |
| 37.7 | 57.9 |
| Substantial Adverse | |
| Substantial Adverse | |

| HAREMOSS COTTAGE | |
|---------------------|------|
| 34.7 | |
| 34.7 | 50.3 |
| 34.7 | 51.5 |
| Substantial Adverse | |
| Substantial Adverse | |

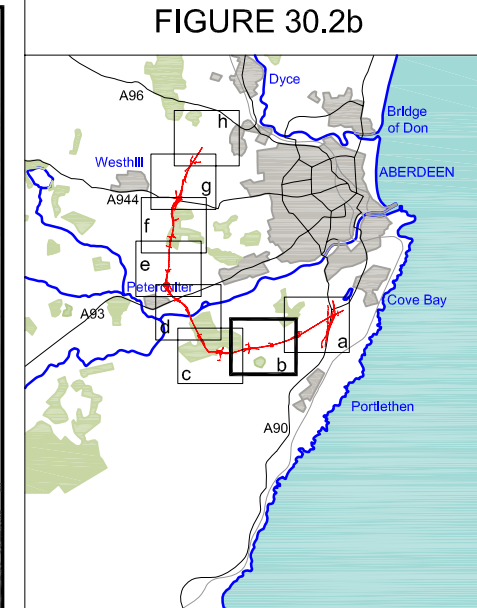
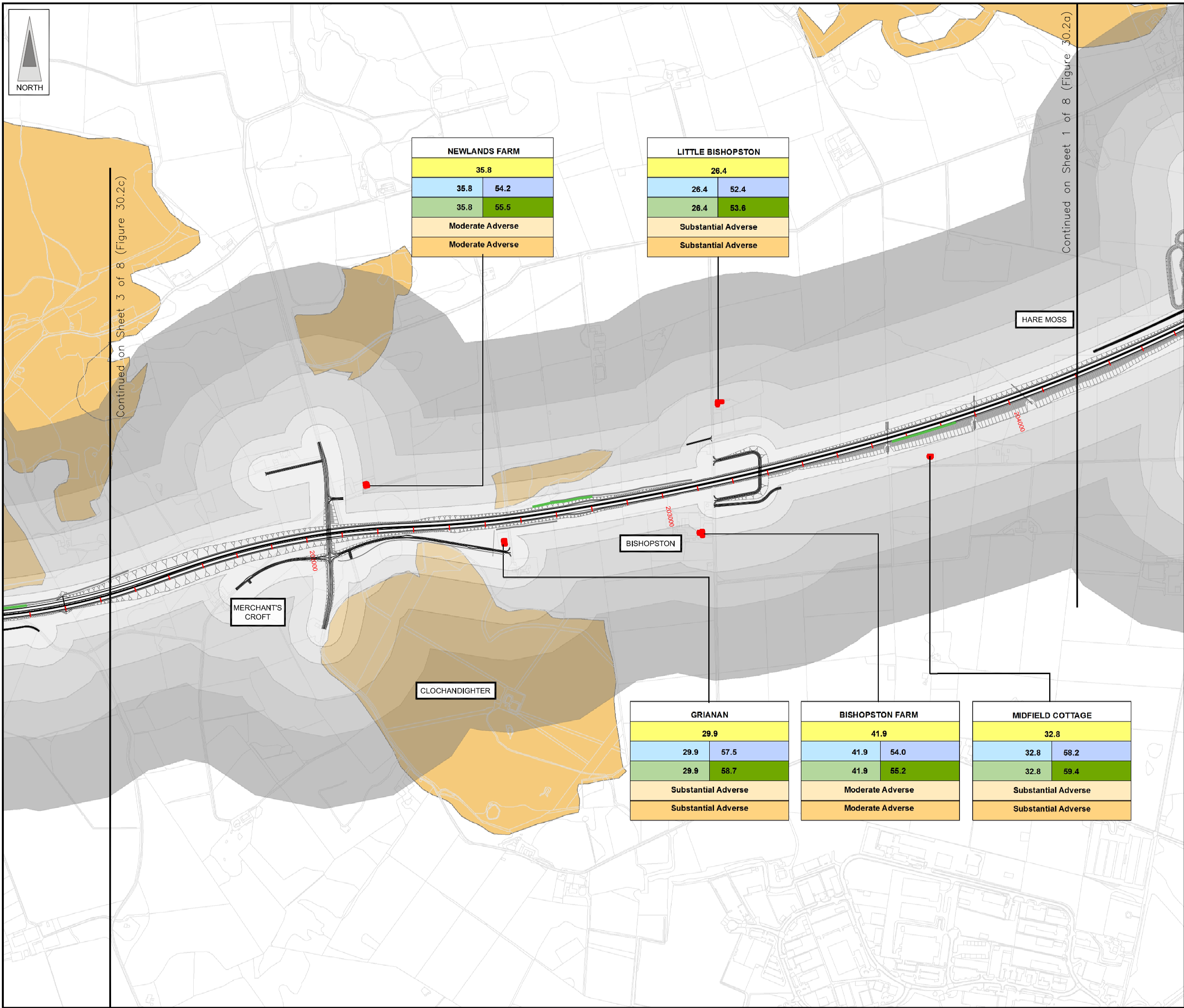
| GLENCAIRN | |
|---------------------|------|
| 37.4 | |
| 37.4 | 54.2 |
| 37.4 | 55.4 |
| Substantial Adverse | |
| Substantial Adverse | |



Continued on Sheet 2 of 8 (Figure 30.2b)



This map is based on Ordnance Survey material with the permission of Ordnance Survey on behalf of the controller of Her Majesty's Stationery Office. Crown copyright. Unauthorized reproduction infringes Crown copyright and may lead to prosecution or civil proceedings. Scottish Executive Licence Number, 100020540 (2007).



LEGEND

- Proposed Route (Engineering Profile 04/05/07)
- 0-50m
- >50-100m
- >100-200m
- >200-300m
- >300-500m
- Sample Properties
- Non Residential Receptors
- Barriers

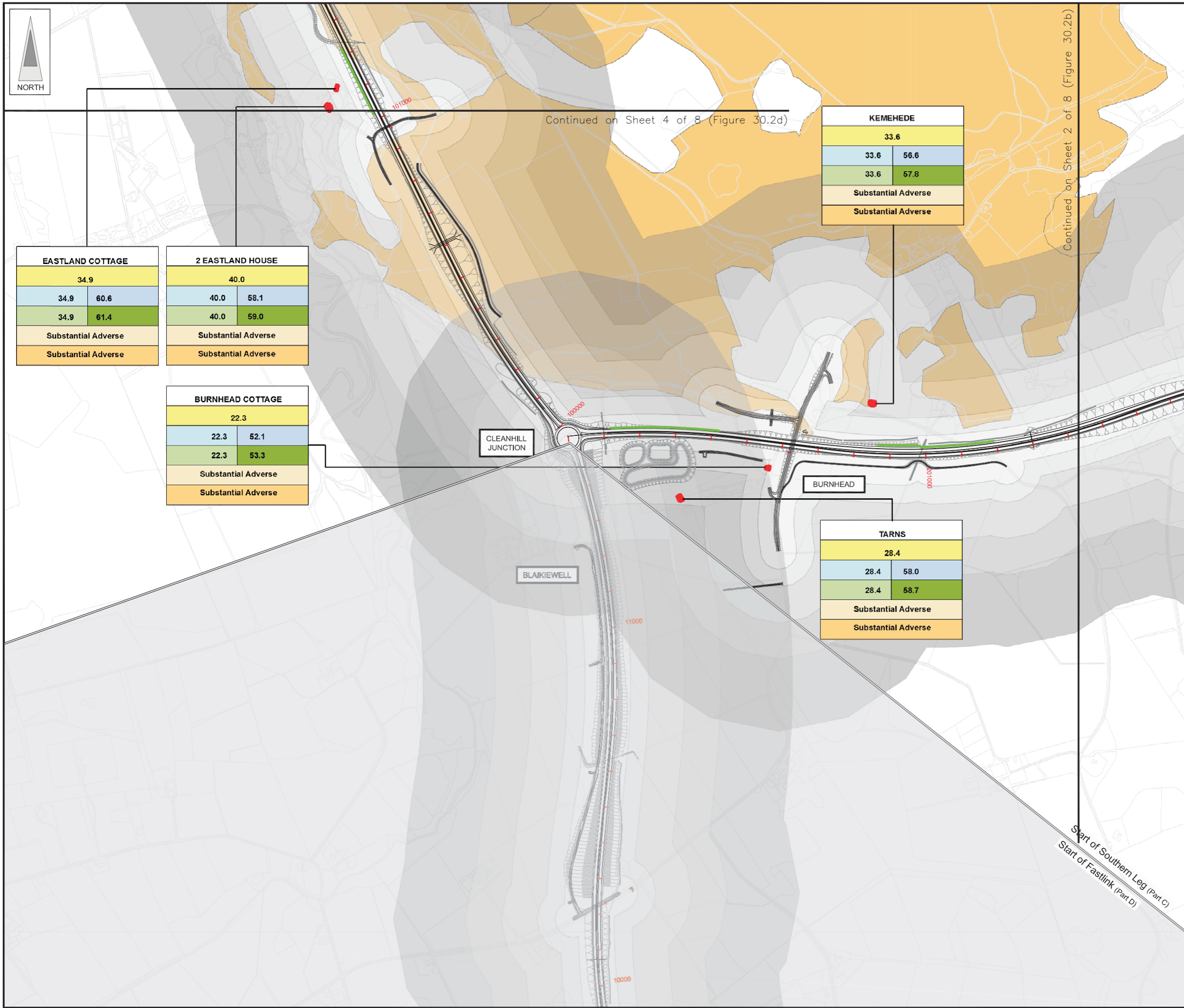
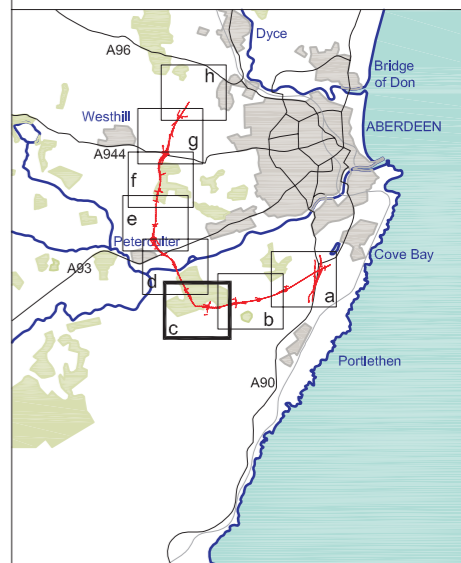
| Location Name | |
|--|------------------------------|
| BASE 2005 | |
| Do Minimum Year of Opening | Do Something Year of Opening |
| Do Minimum Design Year | Do Something Design Year |
| SIGNIFICANCE OF IMPACT Year of Opening | |
| SIGNIFICANCE OF IMPACT Design Year | |

JE JACOBS
 95 Bothwell Street, Glasgow, G2 7HX, UK
 Tel: 0141 204 2511 Fax: 0141 226 3109
 www.jacobsbabtie.com

Hamilton & McGregor
 ACOUSTICS DIVISION

| | | | |
|----------------|---|-----------|-----------|
| Client | Aberdeen Western Peripheral Route | | |
| Project | Aberdeen Western Peripheral Route Environmental Statement, Part C - Southern Leg | | |
| Title | Predicted LA10(18hours) dB with Mitigation (Receiver Height = 1.5m) Sheet 2 of 8 | | |
| Drawing Status | FINAL | Revisions | |
| JB No. | 0010332 | Date | July 2007 |
| Figure No. | FIGURE 30.2b | Drawn | RB |
| Scale | 1:10,000 | Checked | BMcK |
| | | Approved | SH |

FIGURE 30.2c



| EASTLAND COTTAGE | |
|---------------------|------|
| 34.9 | |
| 34.9 | 60.6 |
| 34.9 | 61.4 |
| Substantial Adverse | |
| Substantial Adverse | |

| 2 EASTLAND HOUSE | |
|---------------------|------|
| 40.0 | |
| 40.0 | 58.1 |
| 40.0 | 59.0 |
| Substantial Adverse | |
| Substantial Adverse | |

| BURNHEAD COTTAGE | |
|---------------------|------|
| 22.3 | |
| 22.3 | 52.1 |
| 22.3 | 53.3 |
| Substantial Adverse | |
| Substantial Adverse | |

| KEMEHEDE | |
|---------------------|------|
| 33.6 | |
| 33.6 | 56.6 |
| 33.6 | 57.8 |
| Substantial Adverse | |
| Substantial Adverse | |

| TARNS | |
|---------------------|------|
| 28.4 | |
| 28.4 | 58.0 |
| 28.4 | 58.7 |
| Substantial Adverse | |
| Substantial Adverse | |

- LEGEND**
- Proposed Route (Engineering Profile 04/05/07)
 - 0-50m
 - >50-100m
 - >100-200m
 - >200-300m
 - >300-500m
 - Sample Properties
 - Non Residential Receptors
 - Barriers

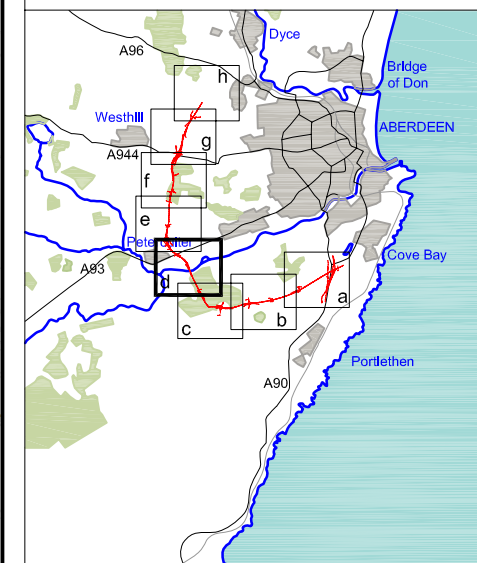
| Location Name | |
|--|------------------------------|
| BASE 2005 | |
| Do Minimum Year of Opening | Do Something Year of Opening |
| Do Minimum Design Year | Do Something Design Year |
| SIGNIFICANCE OF IMPACT Year of Opening | |
| SIGNIFICANCE OF IMPACT Design Year | |

JE JACOBS
 95 Bothwell Street, Glasgow, G2 7HX, UK
 Tel: 0141 204 2511 Fax: 0141 226 3109
 www.jacobsabtle.com

Hamilton & McGregor
 ACOUSTICS DIVISION

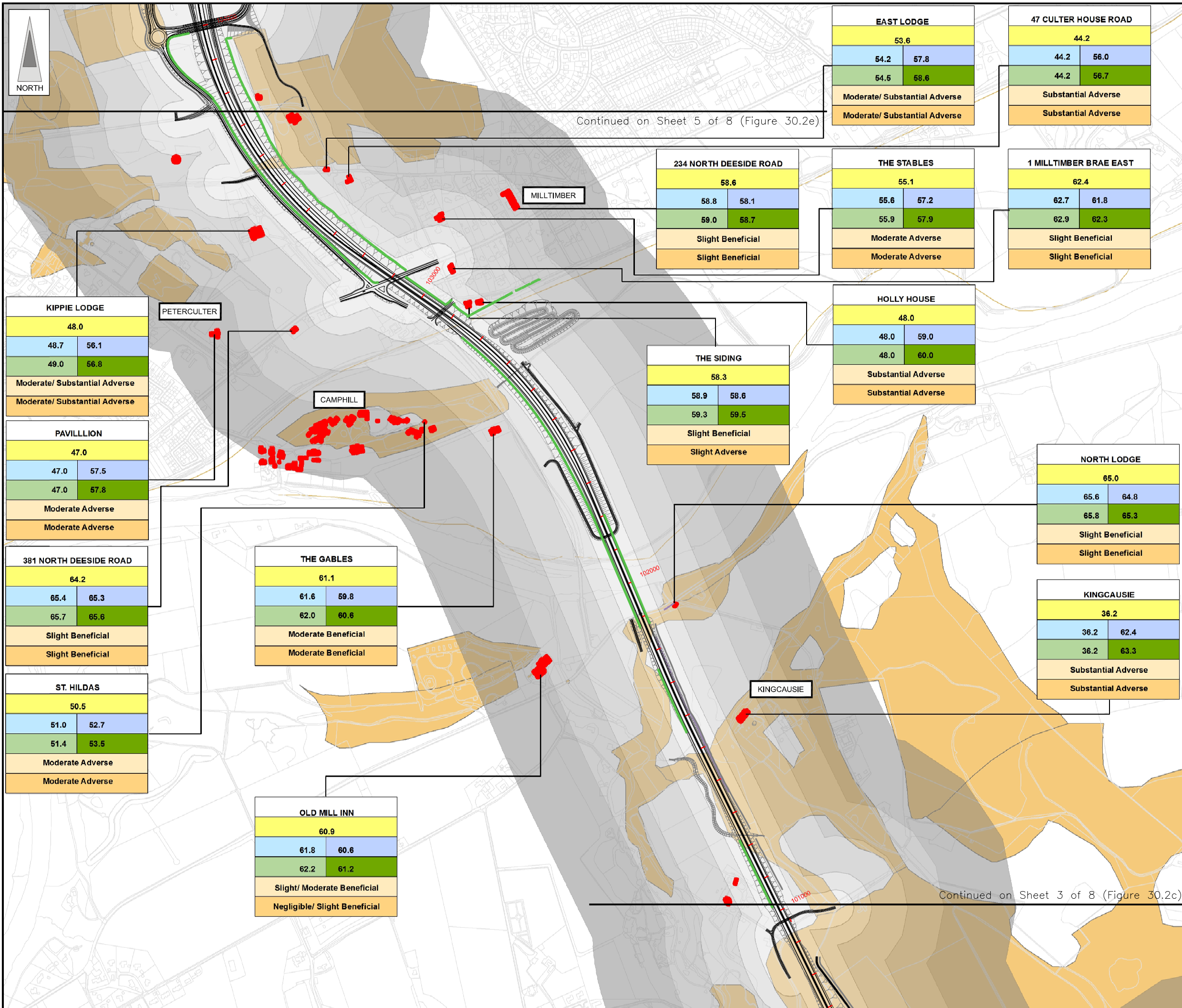
| | | |
|----------------|---|----------------|
| Client | Aberdeen Western Peripheral Route | |
| Project | Aberdeen Western Peripheral Route Environmental Statement, Part C - Southern Leg | |
| Title | Predicted LA10(18hours) dB with Mitigation (Receiver Height = 1.5m) Sheet 3 of 8 | |
| Drawing Status | FINAL | |
| JB No. | 0010332 | |
| Figure No. | FIGURE 30.2c | |
| Scale | 1:10,000 | |
| Drawn | RB | Checked BMCK |
| Approved | SH | Date July 2007 |

FIGURE 30.2d



Continued on Sheet 5 of 8 (Figure 30.2e)

Continued on Sheet 3 of 8 (Figure 30.2c)



| KIPPIE LODGE | |
|-------------------------------|------|
| 48.0 | |
| 48.7 | 56.1 |
| 49.0 | 56.8 |
| Moderate/ Substantial Adverse | |
| Moderate/ Substantial Adverse | |

| PAVILLION | |
|------------------|------|
| 47.0 | |
| 47.0 | 57.5 |
| 47.0 | 57.8 |
| Moderate Adverse | |
| Moderate Adverse | |

| 381 NORTH DEESIDE ROAD | |
|------------------------|------|
| 64.2 | |
| 65.4 | 65.3 |
| 65.7 | 65.6 |
| Slight Beneficial | |
| Slight Beneficial | |

| ST. HILDAS | |
|------------------|------|
| 50.5 | |
| 51.0 | 52.7 |
| 51.4 | 53.5 |
| Moderate Adverse | |
| Moderate Adverse | |

| THE GABLES | |
|---------------------|------|
| 61.1 | |
| 61.6 | 59.8 |
| 62.0 | 60.6 |
| Moderate Beneficial | |
| Moderate Beneficial | |

| OLD MILL INN | |
|-------------------------------|------|
| 60.9 | |
| 61.8 | 60.6 |
| 62.2 | 61.2 |
| Slight/ Moderate Beneficial | |
| Negligible/ Slight Beneficial | |

| 234 NORTH DEESIDE ROAD | |
|------------------------|------|
| 58.6 | |
| 58.8 | 58.1 |
| 59.0 | 58.7 |
| Slight Beneficial | |
| Slight Beneficial | |

| THE SIDING | |
|-------------------|------|
| 58.3 | |
| 58.9 | 58.6 |
| 59.3 | 59.5 |
| Slight Beneficial | |
| Slight Adverse | |

| EAST LODGE | |
|-------------------------------|------|
| 53.6 | |
| 54.2 | 57.8 |
| 54.5 | 58.6 |
| Moderate/ Substantial Adverse | |
| Moderate/ Substantial Adverse | |

| THE STABLES | |
|------------------|------|
| 55.1 | |
| 55.6 | 57.2 |
| 55.9 | 57.9 |
| Moderate Adverse | |
| Moderate Adverse | |

| HOLLY HOUSE | |
|---------------------|------|
| 48.0 | |
| 48.0 | 59.0 |
| 48.0 | 60.0 |
| Substantial Adverse | |
| Substantial Adverse | |

| 47 CULTER HOUSE ROAD | |
|----------------------|------|
| 44.2 | |
| 44.2 | 56.0 |
| 44.2 | 56.7 |
| Substantial Adverse | |
| Substantial Adverse | |

| 1 MILLTIMBER BRAE EAST | |
|------------------------|------|
| 62.4 | |
| 62.7 | 61.8 |
| 62.9 | 62.3 |
| Slight Beneficial | |
| Slight Beneficial | |

| NORTH LODGE | |
|-------------------|------|
| 65.0 | |
| 65.6 | 64.8 |
| 65.8 | 65.3 |
| Slight Beneficial | |
| Slight Beneficial | |

| KINGCAUSIE | |
|---------------------|------|
| 36.2 | |
| 36.2 | 62.4 |
| 36.2 | 63.3 |
| Substantial Adverse | |
| Substantial Adverse | |

LEGEND

- Proposed Route (Engineering Profile 04/05/07)
- 0-50m
- >50-100m
- >100-200m
- >200-300m
- >300-500m
- Sample Properties
- Non Residential Receptors
- Barriers

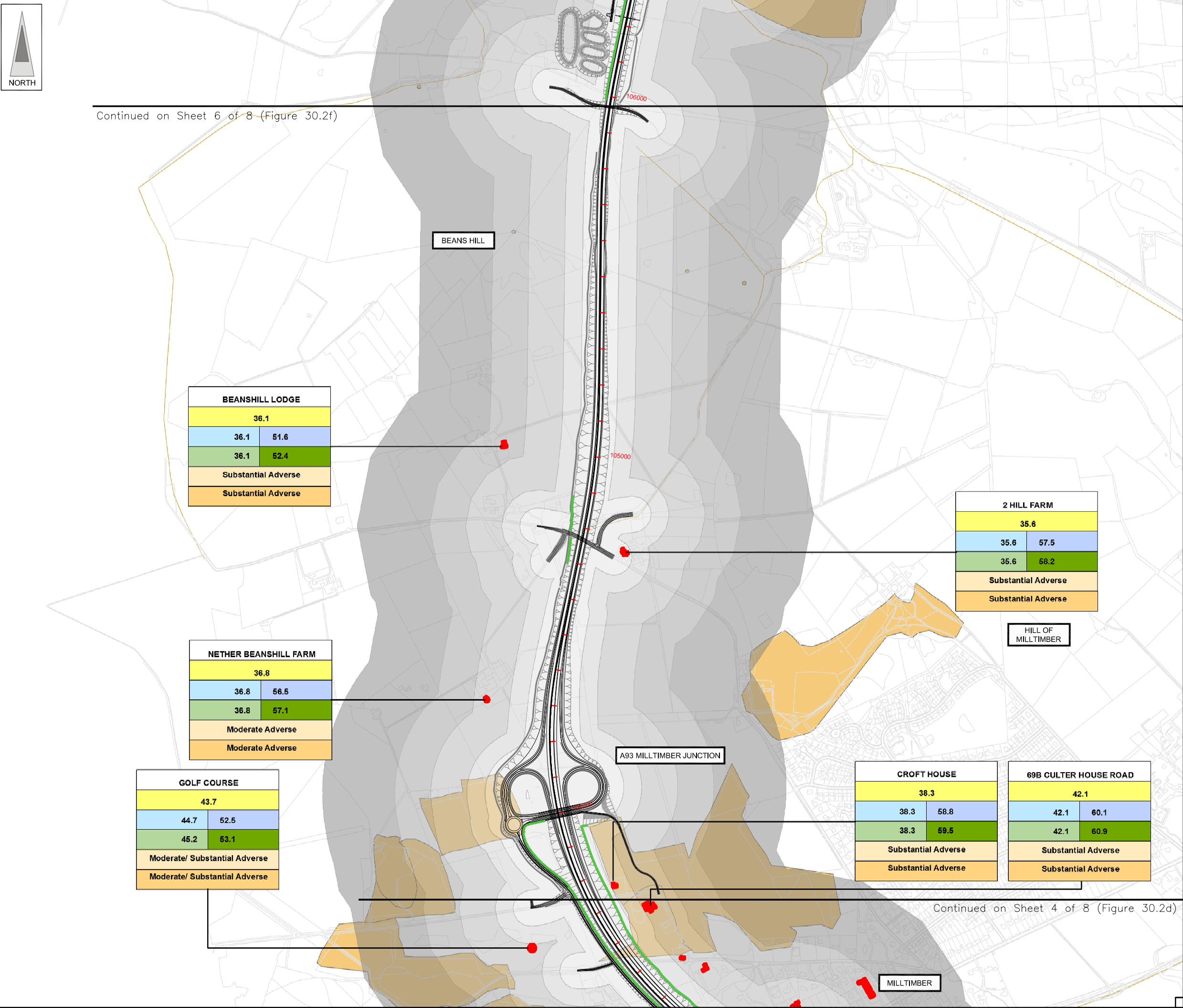
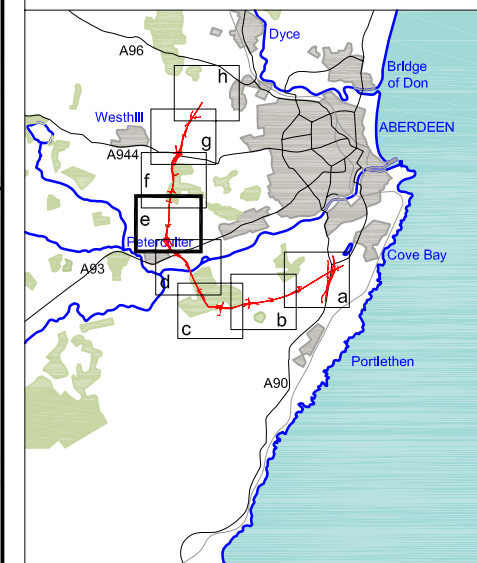
| Location Name | |
|--|------------------------------|
| BASE 2005 | |
| Do Minimum Year of Opening | Do Something Year of Opening |
| Do Minimum Design Year | Do Something Design Year |
| SIGNIFICANCE OF IMPACT Year of Opening | |
| SIGNIFICANCE OF IMPACT Design Year | |

JE JACOBS
 95 Bothwell Street, Glasgow, G2 7HX, UK
 Tel: 0141 204 2511 Fax: 0141 226 3109
 www.jacobsbabtie.com

Hamilton & McGregor
 ACOUSTICS DIVISION

| | | |
|----------------|--|----------------|
| Client | Aberdeen Western Peripheral Route | |
| Project | Aberdeen Western Peripheral Route Environmental Statement, Part C - Southern Leg | |
| Title | Predicted LA10(18hours) dB with Mitigation (Receiver Height = 1.5m) Sheet 4 of 8 | |
| Drawing Status | FINAL | |
| JB No. | 0010332 | |
| Figure No. | FIGURE 30.2d | Revisions |
| Scale | 1:10,000 | Date July 2007 |
| Drawn | RB | Checked BMcK |
| | | Approved SH |

FIGURE 30.2e



Continued on Sheet 6 of 8 (Figure 30.2f)

Continued on Sheet 4 of 8 (Figure 30.2d)

| BEANSHILL LODGE | | |
|---------------------|------|--|
| 36.1 | | |
| 36.1 | 51.6 | |
| 36.1 | 52.4 | |
| Substantial Adverse | | |
| Substantial Adverse | | |

| 2 HILL FARM | | |
|---------------------|------|--|
| 35.6 | | |
| 35.6 | 57.5 | |
| 35.6 | 58.2 | |
| Substantial Adverse | | |
| Substantial Adverse | | |

| NETHER BEANSHILL FARM | | |
|-----------------------|------|--|
| 36.8 | | |
| 36.8 | 56.5 | |
| 36.8 | 57.1 | |
| Moderate Adverse | | |
| Moderate Adverse | | |

HILL OF MILLTIMBER

| GOLF COURSE | | |
|-------------------------------|------|--|
| 43.7 | | |
| 44.7 | 52.5 | |
| 45.2 | 53.1 | |
| Moderate/ Substantial Adverse | | |
| Moderate/ Substantial Adverse | | |

A93 MILLTIMBER JUNCTION

| CROFT HOUSE | | |
|---------------------|------|--|
| 38.3 | | |
| 38.3 | 58.8 | |
| 38.3 | 59.5 | |
| Substantial Adverse | | |
| Substantial Adverse | | |

| 69B CULTER HOUSE ROAD | | |
|-----------------------|------|--|
| 42.1 | | |
| 42.1 | 60.1 | |
| 42.1 | 60.9 | |
| Substantial Adverse | | |
| Substantial Adverse | | |

MILLTIMBER

LEGEND

Proposed Route (Engineering Profile 04/05/07)

0-50m

>50-100m

>100-200m

>200-300m

>300-500m

Sample Properties

Non Residential Receptors

Barriers

| Location Name | |
|--|------------------------------|
| BASE 2005 | |
| Do Minimum Year of Opening | Do Something Year of Opening |
| Do Minimum Design Year | Do Something Design Year |
| SIGNIFICANCE OF IMPACT Year of Opening | |
| SIGNIFICANCE OF IMPACT Design Year | |

JE JACOBS

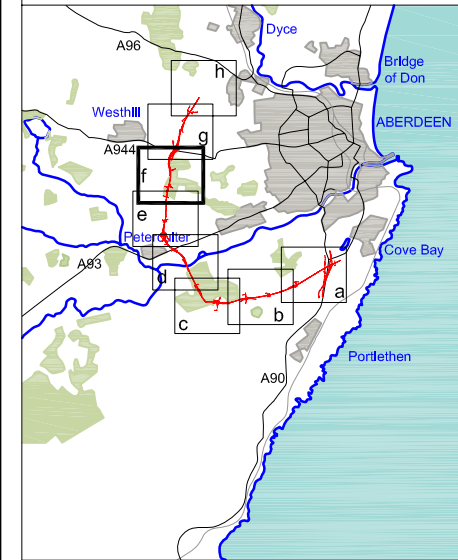
95 Bothwell Street, Glasgow, G2 7HX, UK
Tel: 0141 204 2511 Fax: 0141 226 3109
www.jacobsbabtie.com

Hamilton & McGregor

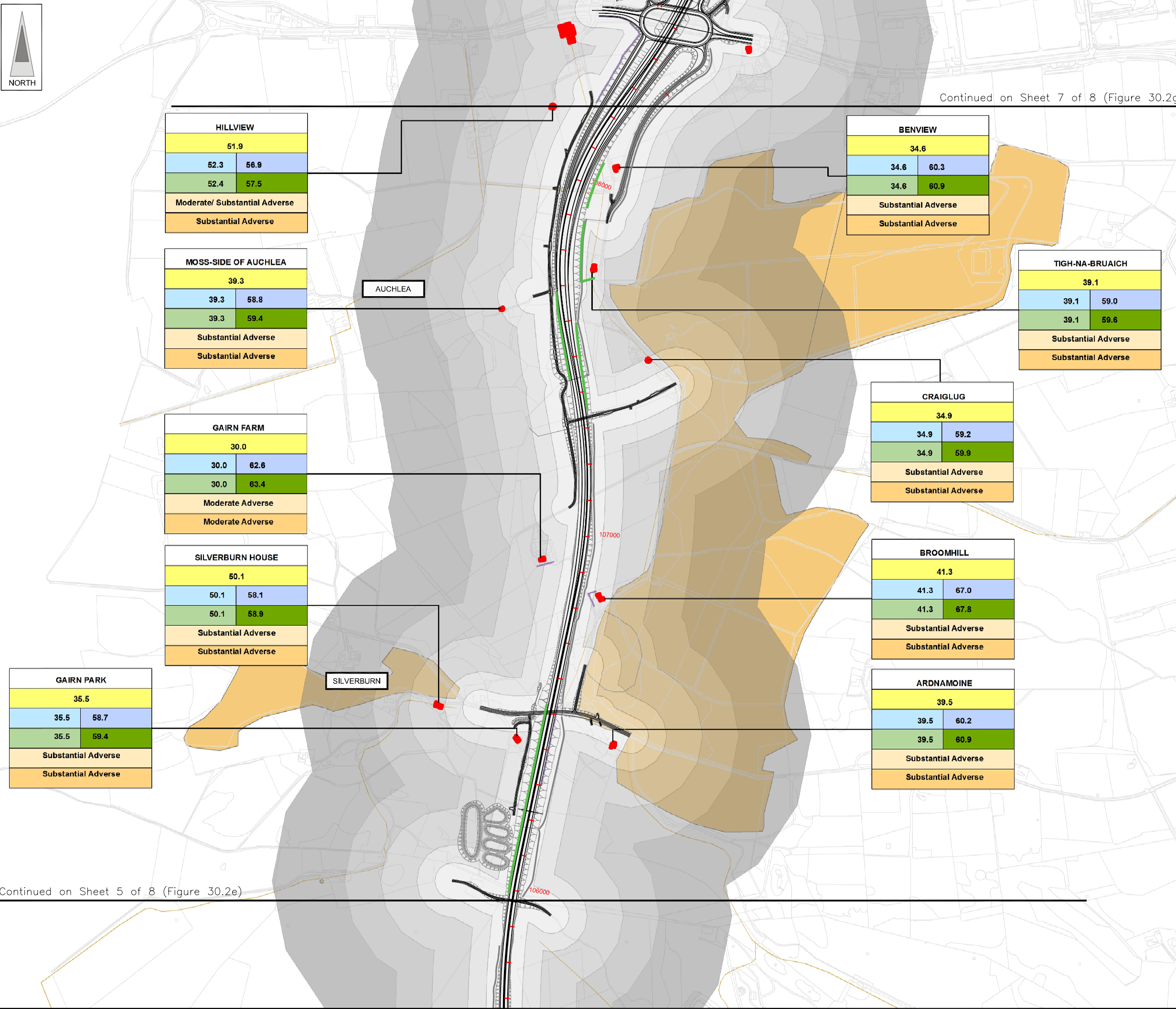
ACOUSTICS DIVISION

| | | | |
|----------------|---|-----------|-----------|
| Client | Aberdeen Western Peripheral Route | | |
| Project | Aberdeen Western Peripheral Route Environmental Statement, Part C - Southern Leg | | |
| Title | Predicted LA10(18hours) dB with Mitigation (Receiver Height = 1.5m) Sheet 5 of 8 | | |
| Drawing Status | FINAL | Revisions | |
| JB No. | 0010332 | Date | July 2007 |
| Figure No. | FIGURE 30.2e | Approved | SH |
| Scale | 1:10,000 | Checked | BMCK |
| Drawn | RB | Approved | SH |

FIGURE 30.2f



Continued on Sheet 7 of 8 (Figure 30.2g)



Continued on Sheet 5 of 8 (Figure 30.2e)

LEGEND

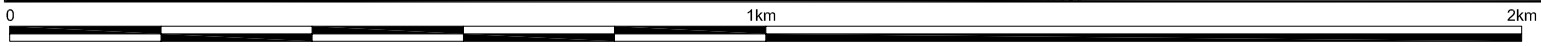
- Proposed Route (Engineering Profile 04/05/07)
- 0-50m
- >50-100m
- >100-200m
- >200-300m
- >300-500m
- Sample Properties
- Non Residential Receptors
- Barriers

| Location Name | |
|--|------------------------------|
| BASE 2005 | |
| Do Minimum Year of Opening | Do Something Year of Opening |
| Do Minimum Design Year | Do Something Design Year |
| SIGNIFICANCE OF IMPACT Year of Opening | |
| SIGNIFICANCE OF IMPACT Design Year | |

JE JACOBS
 95 Bothwell Street, Glasgow, G2 7HX, UK
 Tel: 0141 204 2511 Fax: 0141 226 3109
 www.jacobsbabtie.com

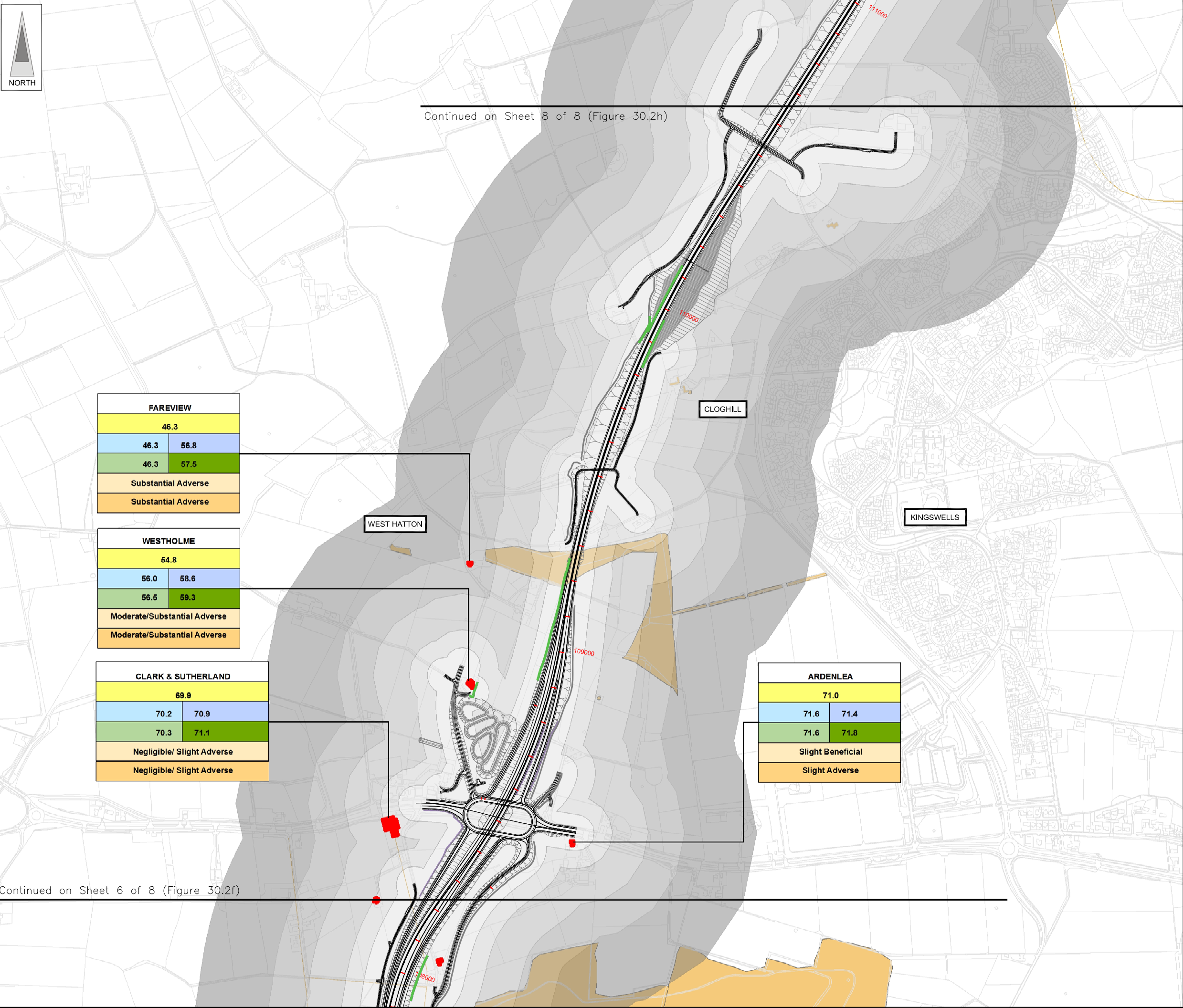
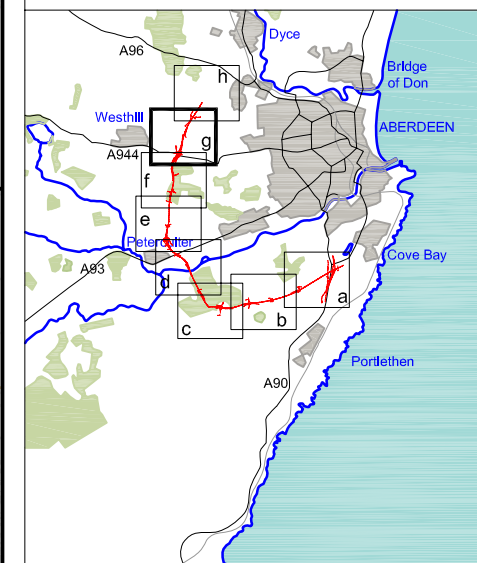
Hamilton & McGregor
 ACOUSTICS DIVISION

| | | |
|----------------|---|----------------|
| Client | Aberdeen Western Peripheral Route | |
| Project | Aberdeen Western Peripheral Route Environmental Statement, Part C - Southern Leg | |
| Title | Predicted LA10(18hours) dB with Mitigation (Receiver Height = 1.5m) Sheet 6 of 8 | |
| Drawing Status | FINAL | |
| JB No. | 0010332 | |
| Figure No. | FIGURE 30.2f | Revisions |
| Scale | 1:10,000 | Date July 2007 |
| Drawn | RB | Checked BMcK |
| | | Approved SH |



This map is based on Ordnance Survey material with the permission of Ordnance Survey on behalf of the controller of Her Majesty's Stationery Office. Crown copyright. Unauthorized reproduction infringes Crown copyright and may lead to prosecution or civil proceedings. Scottish Executive Licence Number, 100020540 (2007).

FIGURE 30.2g



Continued on Sheet 8 of 8 (Figure 30.2h)

Continued on Sheet 6 of 8 (Figure 30.2f)

| FAREVIEW | |
|---------------------|------|
| 46.3 | |
| 46.3 | 56.8 |
| 46.3 | 57.5 |
| Substantial Adverse | |
| Substantial Adverse | |

| WESTHOLME | |
|------------------------------|------|
| 54.8 | |
| 56.0 | 58.6 |
| 56.5 | 59.3 |
| Moderate/Substantial Adverse | |
| Moderate/Substantial Adverse | |

| CLARK & SUTHERLAND | |
|----------------------------|------|
| 69.9 | |
| 70.2 | 70.9 |
| 70.3 | 71.1 |
| Negligible/ Slight Adverse | |
| Negligible/ Slight Adverse | |

| ARDENLEA | |
|-------------------|------|
| 71.0 | |
| 71.6 | 71.4 |
| 71.6 | 71.8 |
| Slight Beneficial | |
| Slight Adverse | |

LEGEND

Proposed Route
(Engineering Profile 04/05/07)

0-50m
>50-100m
>100-200m
>200-300m
>300-500m

Sample Properties

Non Residential Receptors

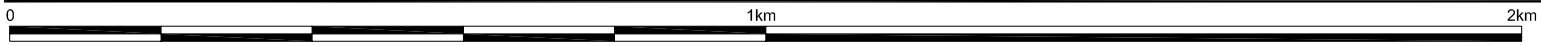
Barriers

| Location Name | |
|---|---------------------------------|
| BASE 2005 | |
| Do Minimum Year of Opening | Do Something Year of Opening |
| Do Minimum Design Year | Do Something Design Year |
| SIGNIFICANCE OF IMPACT Year of Opening | |
| SIGNIFICANCE OF IMPACT Design Year | |

JE JACOBS
95 Bothwell Street, Glasgow, G2 7HX, UK
Tel: 0141 204 2511 Fax: 0141 226 3109
www.jacobsbattle.com

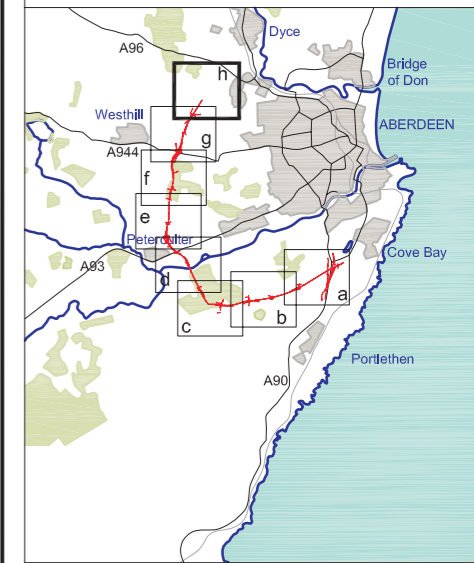
Hamilton & McGregor
ACOUSTICS DIVISION

| | | |
|----------------|--|----------------|
| Client | Aberdeen Western Peripheral Route | |
| Project | Aberdeen Western Peripheral Route Environmental Statement, Part C - Southern Leg | |
| Title | Predicted LA10(18hours) dB with Mitigation (Receiver Height = 1.5m) Sheet 7 of 8 | |
| Drawing Status | FINAL | |
| JB No. | 0010332 | |
| Figure No. | FIGURE 30.2g | Revisions |
| Scale | 1:10,000 | Date July 2007 |
| Drawn | RB | Checked |
| | | Approved |
| | | SH |



This map is based on Ordnance Survey material with the permission of Ordnance Survey on behalf of the controller of Her Majesty's Stationary Office. Crown copyright. Unauthorized reproduction infringes Crown copyright and may lead to prosecution or civil proceedings. Scottish Executive Licence Number, 100020540 (2007).

FIGURE 30.2h



Continued on Sheet 7 of 8 (Figure 30.2g)

- LEGEND**
- Proposed Route (Engineering Profile 04/05/07)
 - 0-50m
 - >50-100m
 - >100-200m
 - >200-300m
 - >300-500m
 - Sample Properties
 - Non Residential Receptors
 - Barriers

| Location Name | |
|--|------------------------------|
| BASE 2005 | |
| Do Minimum Year of Opening | Do Something Year of Opening |
| Do Minimum Design Year | Do Something Design Year |
| SIGNIFICANCE OF IMPACT Year of Opening | |
| SIGNIFICANCE OF IMPACT Design Year | |

JE JACOBS
 95 Bothwell Street, Glasgow, G2 7HX, UK
 Tel: 0141 204 2511 Fax: 0141 226 3109
 www.jacobsabtle.com

Hamilton & McGregor
 ACOUSTICS DIVISION

| | | | |
|----------------|---|-----------|-----------|
| Client | | | |
| Project | Aberdeen Western Peripheral Route Environmental Statement, Part C - Southern Leg | | |
| Title | Predicted LA10(18hours) dB with Mitigation (Receiver Height = 1.5m) Sheet 8 of 8 | | |
| Drawing Status | FINAL | Revisions | |
| JB No. | 0010332 | Date | July 2007 |
| Figure No. | FIGURE 30.2h | Approved | SH |
| Scale | 1:10,000 | Checked | BMCK |
| Drawn | RB | Approved | SH |

This map is based on Ordnance Survey material with the permission of Ordnance Survey on behalf of the controller of Her Majesty's Stationery Office. Crown copyright. Unauthorized reproduction infringes Crown copyright and may lead to prosecution or civil proceedings. Scottish Executive Licence Number, 100020540 (2007).