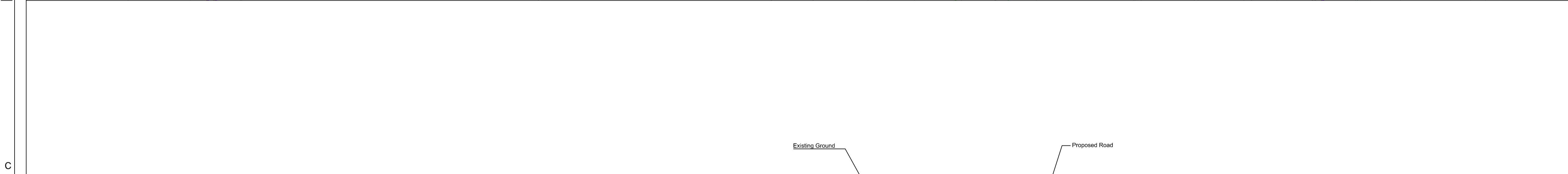


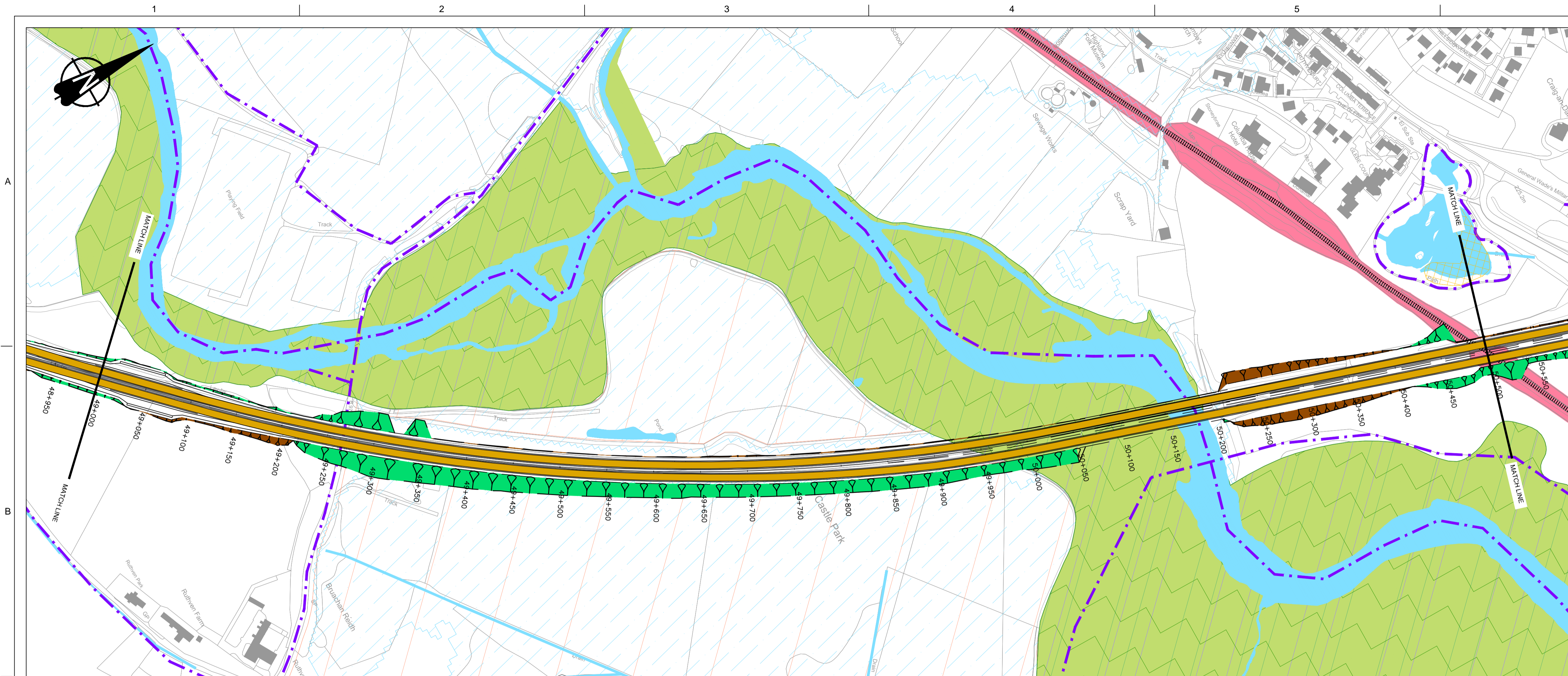
GENERAL NOTES

1. ALL DIMENSIONS IN METRES UNLESS STATED OTHERWISE.

- LEGEND:**
- HYDROLOGY**
- RIVER / STREAM / LOCHS
 - SEPA FLOOD MAPPING (1:200 YEAR)
- INFRASTRUCTURE**
- BEAULTY TO DENNY PYLONS
 - RAIL
 - BUILDINGS
 - NMU FACILITIES (PEDESTRIAN, CYCLIST AND EQUESTRIAN ROUTES)
 - CARRIAGEWAY
 - NATURAL EARTHWORKS SLOPE
 - NATURAL EARTHWORKS CUT
 - VARIABLE EARTHWORKS
- KEY ENVIRONMENTAL CONSTRAINTS**
- ANCIENT WOODLANDS (INVENTORY)
 - BATTLEFIELD SITES
 - BIOLOGICAL SSSI
 - CAIRNGORMS NATIONAL PARK (BOUNDARY)
 - CONSERVATION AREAS
 - GEOLOGICAL CONSERVATION REVIEW SITES
 - GEOLOGICAL SSSI
 - HISTORIC GARDENS AND DESIGNED LANDSCAPES
 - LISTED BUILDINGS
 - MIXED SSSI
 - NATIONAL NATURE RESERVES
 - NATIONAL SCENIC AREAS
 - RAMSAR SITE
 - SAC (SPECIAL AREA OF CONSERVATION)
 - SCHEDULED MONUMENTS
 - SPA (SPECIAL PROTECTION AREA)
 - PEAT AREAS
 - ROCK CUTTING



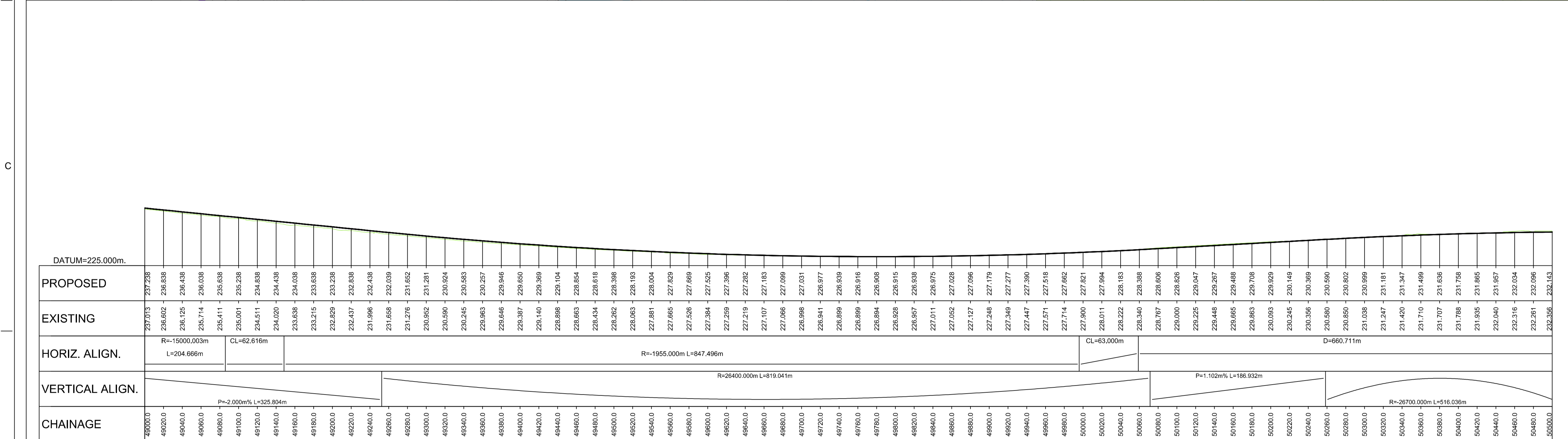
PROPOSED	237.089	237.249	237.409	237.569	237.729	237.889	238.049	238.209	238.369	238.529	238.689	238.849	239.009	239.169	239.329	239.489	239.649	239.809	239.969	240.129	240.289	240.449	240.609	240.769	240.929	241.089	241.249	241.409	241.569	241.729	241.889	242.049	242.209	242.369	242.529	242.689	242.849	243.009	243.169	243.329	243.489	243.649	243.809	243.969	244.129	244.289	244.449	244.609	244.769	244.929	245.089	245.249	245.409	245.569	245.729	245.889	246.049	246.209	246.369	246.529	246.689	246.849	247.009	247.169	247.329	247.489	247.649	247.809	247.969	248.129	248.289	248.449	248.609	248.769	248.929	249.089	249.249	249.409	249.569	249.729	249.889	250.049	250.209	250.369	250.529	250.689	250.849	251.009	251.169	251.329	251.489	251.649	251.809	251.969	252.129	252.289	252.449	252.609	252.769	252.929	253.089	253.249	253.409	253.569	253.729	253.889	254.049	254.209	254.369	254.529	254.689	254.849	255.009	255.169	255.329	255.489	255.649	255.809	255.969	256.129	256.289	256.449	256.609	256.769	256.929	257.089	257.249	257.409	257.569	257.729	257.889	258.049	258.209	258.369	258.529	258.689	258.849	259.009	259.169	259.329	259.489	259.649	259.809	259.969	260.129	260.289	260.449	260.609	260.769	260.929	261.089	261.249	261.409	261.569	261.729	261.889	262.049	262.209	262.369	262.529	262.689	262.849	263.009	263.169	263.329	263.489	263.649	263.809	263.969	264.129	264.289	264.449	264.609	264.769	264.929	265.089	265.249	265.409	265.569	265.729	265.889	266.049	266.209	266.369	266.529	266.689	266.849	267.009	267.169	267.329	267.489	267.649	267.809	267.969	268.129	268.289	268.449	268.609	268.769	268.929	269.089	269.249	269.409	269.569	269.729	269.889	270.049	270.209	270.369	270.529	270.689	270.849	271.009	271.169	271.329	271.489	271.649	271.809	271.969	272.129	272.289	272.449	272.609	272.769	272.929	273.089	273.249	273.409	273.569	273.729	273.889	274.049	274.209	274.369	274.529	274.689	274.849	275.009	275.169	275.329	275.489	275.649	275.809	275.969	276.129	276.289	276.449	276.609	276.769	276.929	277.089	277.249	277.409	277.569	277.729	277.889	278.049	278.209	278.369	278.529	278.689	278.849	279.009	279.169	279.329	279.489	279.649	279.809	279.969	280.129	280.289	280.449	280.609	280.769	280.929	281.089	281.249	281.409	281.569	281.729	281.889	282.049	282.209	282.369	282.529	282.689	282.849	283.009	283.169	283.329	283.489	283.649	283.809	283.969	284.129	284.289	284.449	284.609	284.769	284.929	285.089	285.249	285.409	285.569	285.729	285.889	286.049	286.209	286.369	286.529	286.689	286.849	287.009	287.169	287.329	287.489	287.649	287.809	287.969	288.129	288.289	288.449	288.609	288.769	288.929	289.089	289.249	289.409	289.569	289.729	289.889	290.049	290.209	290.369	290.529	290.689	290.849	291.009	291.169	291.329	291.489	291.649	291.809	291.969	292.129	292.289	292.449	292.609	292.769	292.929	293.089	293.249	293.409	293.569	293.729	293.889	294.049	294.209	294.369	294.529	294.689	294.849	295.009	295.169	295.329	295.489	295.649	295.809	295.969	296.129	296.289	296.449	296.609	296.769	296.929	297.089	297.249	297.409	297.569	297.729	297.889	298.049	298.209	298.369	298.529	298.689	298.849	299.009	299.169	299.329	299.489	299.649	299.809	300.000																																																																				
EXISTING	236.890	237.015	237.200	237.409	237.658	237.976	238.364	238.849	239.438	240.149	240.996	241.914	242.929	244.059	245.314	246.714	248.269	249.989	250.889	251.989	253.309	254.869	256.599	258.509	260.609	262.909	265.419	268.149	271.109	274.309	277.749	281.429	285.349	289.509	293.909	298.549	303.429	308.549	313.909	319.509	325.349	331.429	337.749	344.309	351.109	358.149	365.429	372.949	380.609	388.429	396.409	404.549	412.849	421.309	430.029	438.909	447.949	457.149	466.509	476.029	485.709	495.549	505.549	515.709	526.029	536.509	547.149	557.949	568.909	579.029	589.309	599.749	610.349	621.109	632.029	643.109	654.349	665.749	677.309	689.029	700.909	712.949	725.149	737.509	750.029	762.709	775.549	788.549	801.709	815.029	828.509	842.149	855.949	869.909	884.029	898.309	912.749	927.349	942.109	957.029	972.109	987.349	1002.749	1018.309	1034.029	1049.909	1065.949	1082.149	1098.509	1115.029	1131.709	1148.549	1165.549	1182.709	1200.029	1217.509	1235.149	1252.949	1270.909	1289.029	1307.309	1325.749	1344.349	1363.109	1382.029	1401.109	1420.349	1439.749	1459.309	1479.029	1498.909	1518.949	1539.149	1559.509	1580.029	1600.749	1621.609	1642.629	1663.809	1685.149	1706.649	1728.309	1750.129	1772.109	1794.249	1816.549	1839.009	1861.629	1884.409	1907.349	1930.449	1953.709	1977.129	2000.709	2024.449	2048.349	2072.409	2096.629	2121.009	2145.549	2170.249	2195.109	2220.129	2245.309	2270.649	2296.149	2321.809	2347.629	2373.609	2400.849	2428.349	2456.009	2483.829	2511.809	2540.049	2568.449	2597.009	2625.729	2654.609	2683.649	2712.849	2742.209	2771.729	2801.409	2831.249	2861.249	2891.409	2921.729	2952.209	2982.849	3013.649	3044.609	3075.729	3107.009	3138.449	3170.049	3201.809	3233.729	3265.809	3298.049	3330.449	3363.009	3395.729	3428.609	3461.649	3494.849	3528.209	3561.749	3595.449	3629.289	3663.289	3697.449	3731.769	3766.249	3800.889	3835.689	3870.649	3905.769	3941.049	3976.489	4012.089	4047.849	4083.769	4119.849	4156.089	4192.489	4229.049	4265.769	4302.649	4339.689	4376.889	4414.249	4451.769	4489.449	4527.289	4565.289	4603.449	4641.769	4680.249	4718.889	4757.689	4796.649	4835.769	4875.049	4914.489	4954.089	4993.849	5033.769	5073.849	5114.089	5154.489	5195.049	5235.769	5276.649	5317.689	5358.889	5400.249	5441.769	5483.449	5525.289	5567.289	5609.449	5651.769	5694.249	5736.889	5779.689	5822.649	5865.769	5909.049	5952.489	5996.089	6039.849	6083.769	6127.849	6172.089	6216.489	6261.049	6305.769	6350.649	6395.689	6440.889	6486.249	6531.769	6577.449	6623.289	6669.289	6715.449	6761.769	6808.249	6854.889	6901.689	6948.649	6995.769	7043.049	7090.489	7138.089	7185.849	7233.769	7281.849	7330.089	7378.489	7427.049	7475.769	7524.649	7573.689	7622.889	7672.249	7721.769	7771.449	7821.289	7871.289	7921.449	7971.769	8022.249	8072.889	8123.689	8174.649	8225.769	8277.049	8328.489	8380.089	8431.849	8483.769	8535.849	8588.089	8640.489	8693.049	8745.769	8798.649	8851.689	8904.889	8958.249	9011.769	9065.449	9119.289	9173.289	9227.449	9281.769	9336.249	9390.889	9445.689	9500.649	9555.769	9611.049	9666.489	9722.089	9777.889	9833.849	9889.969	9946.249	10002.689	10059.289	10116.049	10172.969	10230.049	10287.289	10344.689	10402.249	10460.049	10517.969	10576.049	10634.289	10692.689	10751.249	10810.049	10869.089	10928.289	10987.649	11047.169	11106.849	11166.689	11226.689	11286.849	11347.169	11407.649	11468.289	11529.089	11590.049	11651.169	11712.449	11773.889	11835.489	11897.249	11959.169	12021.249	12083.489	12145.889	12208.449	12271.169	12334.049	12397.089	12460.289	12523.649	12587.169	12650.849	12714.689	12778.689	12842.849	12907.169	12971.649	13036.289	13101.089	13166.049	13231.169	13296.449	13361.889	13427.489	13493.249	13559.169	13625.249	13691.489	13757.889	13824.449	13891.169	13958.049	14025.089	14092.289	14159.649	14227.169	14294.849	14362.689	14430.689	14498.849	14567.169	14635.649	14704.289	14773.089	14842.049	14911.169	14980.449	15050.089	15119.889	15189.849	15259.969	15330.249	15400.689	15471.289	15542.049	15612.969	15684.049	15755.289	15826.689	15898.249	15969.969	16041.849	16113.889	16186.089	16258.449	16330.969	16403.649	16476.489	16549.489	16622.649	16695.969	16769.449	16843.089	16916.889	16990.849	17064.969	17139.249	17213.689	17288.289



GENERAL NOTES

1. ALL DIMENSIONS IN METRES UNLESS STATED OTHERWISE.

- LEGEND:**
- HYDROLOGY**
- RIVER / STREAM / LOCHS
 - SEPA FLOOD MAPPING (1:200 YEAR)
- INFRASTRUCTURE**
- BEAULTY TO DENNY PYLONS
 - RAIL
 - BUILDINGS
 - NMU FACILITIES (PEDESTRIAN, CYCLIST AND EQUESTRIAN ROUTES)
 - CARRIAGEWAY
 - NATURAL EARTHWORKS SLOPE
 - NATURAL EARTHWORKS CUT
 - VARIABLE EARTHWORKS
- KEY ENVIRONMENTAL CONSTRAINTS**
- ANCIENT WOODLANDS (INVENTORY)
 - BATTLEFIELD SITES
 - BIOLOGICAL SSSI
 - CAIRNGORMS NATIONAL PARK (BOUNDARY)
 - CONSERVATION AREAS
 - GEOLOGICAL CONSERVATION REVIEW SITES
 - GEOLOGICAL SSSI
 - HISTORIC GARDENS AND DESIGNED LANDSCAPES
 - LISTED BUILDINGS
 - MIXED SSSI
 - NATIONAL NATURE RESERVES
 - NATIONAL SCENIC AREAS
 - RAMSAR SITE
 - SAC (SPECIAL AREA OF CONSERVATION)
 - SCHEDULED MONUMENTS
 - SPA (SPECIAL PROTECTION AREA)
 - PEAT AREAS
 - ROCK CUTTING



LONG SECTION
SCALE 1:2500H/1:500V

REV	SUIT	DATE	DESCRIPTION	BY	APP
P01	S2	17-11-15	FIRST ISSUE	RY	RG

ch2m FAIRHURST
CH2M HILL Fairhurst JV
C/O: City Park 368 Alexandra Parade Glasgow G3 3AU
Tel +44 (0)141 552 2000 Fax +44 (0)141 552 2525

TRANSPORT SCOTLAND
COMMERCIAL AREA

A9 DUALLING
PERTH TO INVERNESS
Crubentown to Kincairdie

PROJECT 09
**CRUBENMORE TO KINCAIRG
MAINLINE DMRB - ALIGNMENT
SECTION 4 OPTION 4C**

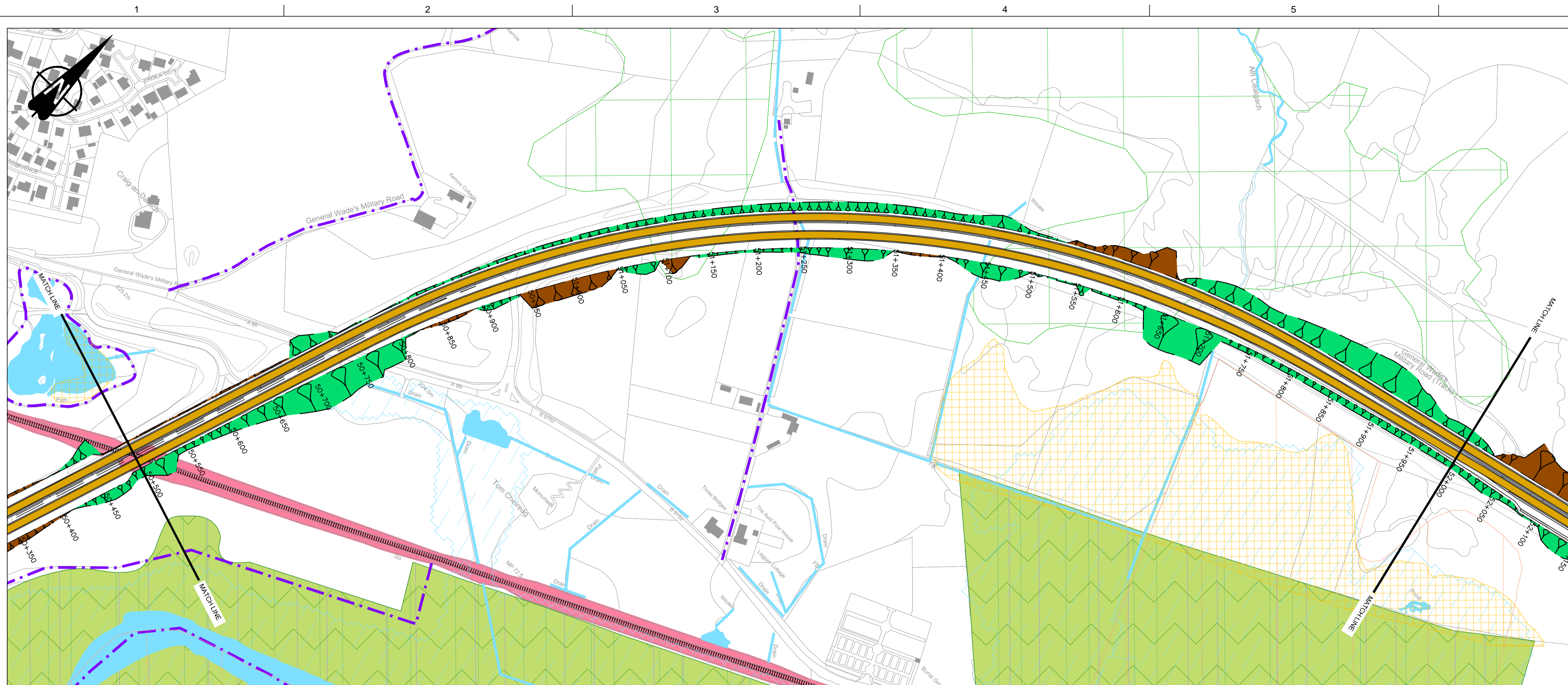
DESIGN:	DRAWN:	CHK:	APP:
A Campbell	R Young	B Okunfolami	R Gray

1:2500 at A1

DATE:	27/10/15
PROJ:	97318
DWG:	A9P09-CFJ-HML-H_ML488_ML-DR-RD-0002
SHEET:	2 of 4
REVISION:	P01
SUITABILITY:	S2

Reproduced by permission of Ordnance Survey on behalf of Her Majesty's Stationery Office. © Crown copyright and database right 2015. All rights reserved. Ordnance Survey Licence Number: 100046668.

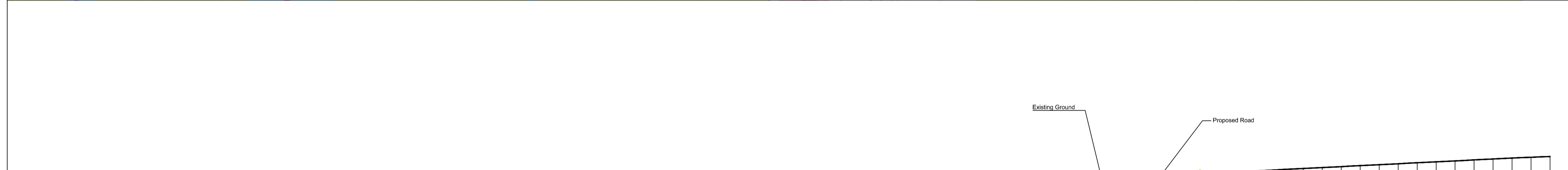
A9P09-CFJ-HML-H_ML488_ML-SK-RD-0002.dwg



GENERAL NOTES

1. ALL DIMENSIONS IN METRES UNLESS STATED OTHERWISE.

- LEGEND:**
- HYDROLOGY**
- RIVER / STREAM / LOCHS
 - SEPA FLOOD MAPPING (1:200 YEAR)
- INFRASTRUCTURE**
- BEAULTY TO DENNY PYLONS
 - RAIL
 - BUILDINGS
 - NMU FACILITIES (PEDESTRIAN, CYCLIST AND EQUESTRIAN ROUTES)
 - CARRIAGEWAY
 - NATURAL EARTHWORKS SLOPE
 - NATURAL EARTHWORKS CUT
 - VARIABLE EARTHWORKS
- KEY ENVIRONMENTAL CONSTRAINTS**
- ANCIENT WOODLANDS (INVENTORY)
 - BATTLEFIELD SITES
 - BIOLOGICAL SSSI
 - CAIRNGORMS NATIONAL PARK (BOUNDARY)
 - CONSERVATION AREAS
 - GEOLOGICAL CONSERVATION REVIEW SITES
 - GEOLOGICAL SSSI
 - HISTORIC GARDENS AND DESIGNED LANDSCAPES
 - LISTED BUILDINGS
 - MIXED SSSI
 - NATIONAL NATURE RESERVES
 - NATIONAL SCENIC AREAS
 - RAMSAR SITE
 - SAC (SPECIAL AREA OF CONSERVATION)
 - SCHEDULED MONUMENTS
 - SPA (SPECIAL PROTECTION AREA)
 - PEAT AREAS
 - ROCK CUTTING



PROPOSED	EXISTING	HORIZ. ALIGN.	VERTICAL ALIGN.	CHAINAGE
232.143	232.356	D=660.711m	R=26700.000m L=516.036m	50500.0
232.175	232.423			50520.0
232.193	232.350	CL=121.000m	R=30000.000m L=549.088m	50540.0
232.195	232.437			50560.0
232.182	232.437	R=1020.000m L=928.517m	P=1.000m% L=613.885m	50580.0
232.154	232.366			50600.0
232.111	232.321	CL=121.000m	R	50620.0
232.053	232.276			50640.0
231.980	232.199	D=540.628m		50660.0
231.893	232.113		50680.0	
231.790	232.062			50700.0
231.672	232.008			50720.0
231.540	231.892			50740.0
231.392	231.632			50760.0
231.230	231.533			50780.0
231.074	231.278			50800.0
230.932	231.133			50820.0
230.803	231.045			50840.0
230.687	230.868			50860.0
230.585	230.554			50880.0
230.486	230.221			50900.0
230.420	229.949			50920.0
230.358	229.817			50940.0
230.309	229.719			50960.0
230.273	229.854			50980.0
230.250	229.855			51000.0
230.241	229.919			51020.0
230.246	229.246			51040.0
230.263	229.340			51060.0
230.284	227.562			51080.0
230.339	229.517			51100.0
230.386	229.853			51120.0
230.467	229.846			51140.0
230.551	229.530			51160.0
230.649	229.500			51180.0
230.700	229.500			51200.0
230.884	229.488			51220.0
231.022	228.983			51240.0
231.173	229.023			51260.0
231.337	229.358			51280.0
231.515	229.837			51300.0
231.705	230.050			51320.0
231.905	230.151			51340.0
232.105	230.188			51360.0
232.305	230.258			51380.0
232.505	230.322			51400.0
232.705	230.308			51420.0
232.905	230.282			51440.0
233.105	230.327			51460.0
233.305	230.534			51480.0
233.505	230.784			51500.0
233.705	231.085			51520.0
233.905	231.385			51540.0
234.105	231.707			51560.0
234.305	232.109			51580.0
234.505	232.788			51600.0
234.705	234.717			51620.0
234.905	234.574			51640.0
235.105	231.692			51660.0
235.305	229.629			51680.0
235.505	229.351			51700.0
235.705	228.865			51720.0
235.905	227.457			51740.0
236.105	227.357			51760.0
236.305	226.894			51780.0
236.505	226.910			51800.0
236.705	227.054			51820.0
236.905	227.296			51840.0
237.105	227.777			51860.0
237.305	228.535			51880.0
237.505	229.446			51900.0
237.705	229.896			51920.0
237.905	229.892			51940.0
238.095	230.478			51960.0
238.289	231.357			51980.0
238.477	232.388			52000.0

LONG SECTION
SCALE 1:2500H/1:500V

REV	SUIT	DATE	DESCRIPTION	BY	APP
P01	S2	17-11-15	FIRST ISSUE	RY	RG

ch2m FAIRHURST
CH2M HILL Fairhurst JV
C/O: City Park 368 Alexandra Parade Glasgow G3 3AU
Tel +44 (0)141 552 2000 Fax +44 (0)141 552 2525

TRANSPORT SCOTLAND
COMMERCIAL A&A

A9 DUALLING
PERTH TO INVERNESS
Crubennore to Kinross

PROJECT 09
CRUBENMORE TO KINRAIG
MAINLINE DMRB - ALIGNMENT
SECTION 4 OPTION 4C

DESIGN:	DRAWN:	CHK:	APP:
A Campbell	R Young	B Okunfolami	R Gray

1:2500 at A1

DATE:	27/10/15
PROJ:	97318
DWG:	A9P09-CFJ-HML-H_ML488_ML-DR-RD-0003
SHEET:	3 of 4
REVISION:	P01
SUITABILITY:	S2

Reproduced by permission of Ordnance Survey on behalf of Her Majesty's Stationery Office, © Crown copyright and database right 2015. All rights reserved. Ordnance Survey Licence Number: 100046668.

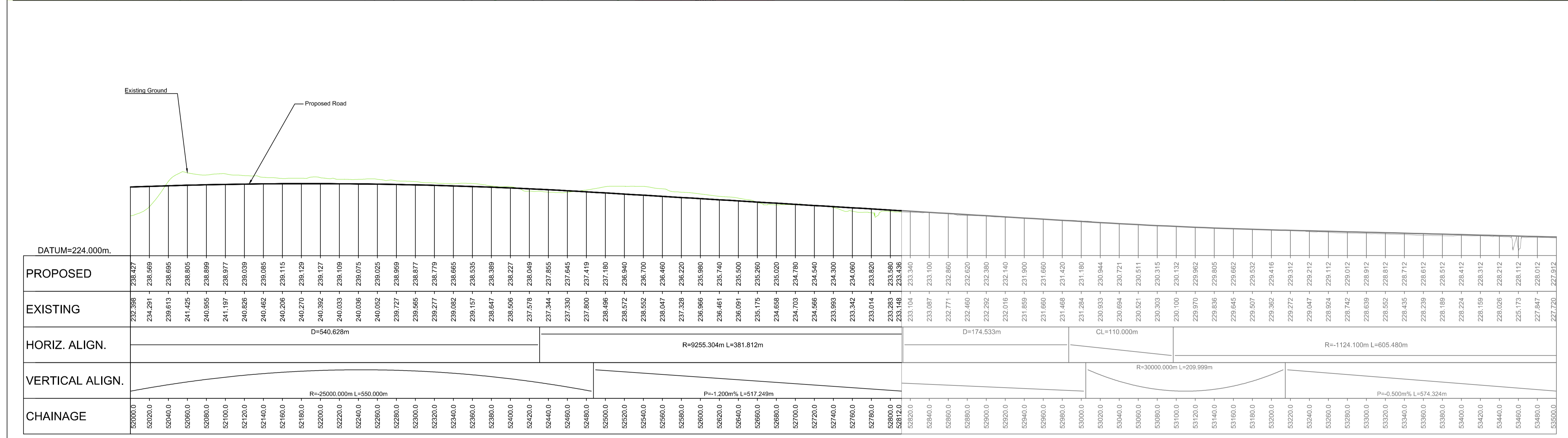
A9P09-CFJ-HML-H_ML488_ML-SK-RD-0003.dwg



GENERAL NOTES

1. ALL DIMENSIONS IN METRES UNLESS STATED OTHERWISE.

- LEGEND:**
- HYDROLOGY**
- RIVER / STREAM / LOCHS
 - SEPA FLOOD MAPPING (1:200 YEAR)
- INFRASTRUCTURE**
- BEAUTY TO DENNY PYLONS
 - RAIL
 - BUILDINGS
 - NMU FACILITIES (PEDESTRIAN, CYCLIST AND EQUESTRIAN ROUTES)
 - CARRIAGEWAY
 - NATURAL EARTHWORKS SLOPE
 - NATURAL EARTHWORKS CUT
 - VARIABLE EARTHWORKS
- KEY ENVIRONMENTAL CONSTRAINTS**
- ANCIENT WOODLANDS (INVENTORY)
 - BATTLEFIELD SITES
 - BIOLOGICAL SSSI
 - CAIRNGORMS NATIONAL PARK (BOUNDARY)
 - CONSERVATION AREAS
 - GEOLOGICAL CONSERVATION REVIEW SITES
 - GEOLOGICAL SSSI
 - HISTORIC GARDENS AND DESIGNED LANDSCAPES
 - LISTED BUILDINGS
 - MIXED SSSI
 - NATIONAL NATURE RESERVES
 - NATIONAL SCENIC AREAS
 - RAMSAR SITE
 - SAC (SPECIAL AREA OF CONSERVATION)
 - SCHEDULED MONUMENTS
 - SPA (SPECIAL PROTECTION AREA)
 - PEAT AREAS
 - ROCK CUTTING



LONG SECTION
SCALE 1:2500H/1:500V

REV	SUIT	DATE	DESCRIPTION	BY	APP
P01	S2	17-11-15	FIRST ISSUE	RY	RG

ch2m FAIRHURST
CH2M HILL Fairhurst JV
C/O: City Park 368 Alexandra Parade Glasgow G31 3AU
Tel +44 (0)141 552 2000 Fax +44 (0)141 552 2525



PROJECT 09
CRUBENMORE TO KIN CRAIG
MAINLINE DMRB - ALIGNMENT
SECTION 4 OPTION 4C

DESIGN:	DRAWN:	CHK:	APP:
A Campbell	R Young	B Okunfolami	R Gray

1:2500 at A1

DATE:	27/10/15
PROJ:	97318
DWG:	A9P09-CFJ-HML-H_ML488_ML-DR-RD-0004
SHEET:	4 of 4
REVISION:	P01
SUITABILITY:	S2

Reproduced by permission of Ordnance Survey on behalf of Her Majesty's Stationery Office, © Crown copyright and database right 2015. All rights reserved. Ordnance Survey Licence Number: 100046668.

A9P09-CFJ-HML-H_ML488_ML-SK-RD-0004.dwg