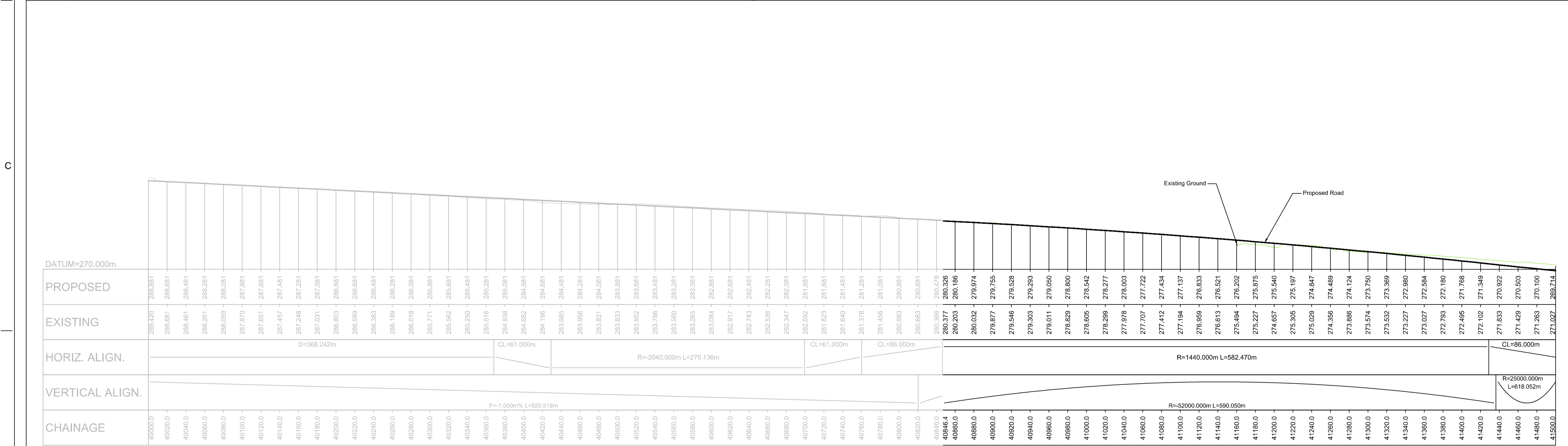


GENERAL NOTES

1. ALL DIMENSIONS IN METRES UNLESS STATED OTHERWISE.

- LEGEND:**
- HYDROLOGY**
- RIVER / STREAM / LOCHS
 - SEPA FLOOD MAPPING (1:200 YEAR)
- INFRASTRUCTURE**
- RAIL TO DENNY PYLONS
 - RAIL
 - BUILDINGS
 - NMU FACILITIES (PEDESTRIAN, CYCLIST AND EQUESTRIAN ROUTES)
 - CARRIAGEWAY
 - NATURAL EARTHWORKS SLOPE
 - NATURAL EARTHWORKS CUT
 - VARIABLE EARTHWORKS
- KEY ENVIRONMENTAL CONSTRAINTS**
- ANCIENT WOODLANDS (INVENTORY)
 - BATTLEFIELD SITES
 - BIOLOGICAL SSSI
 - CAIRNGORMS NATIONAL PARK (BOUNDARY)
 - CONSERVATION AREAS
 - GEOLOGICAL CONSERVATION REVIEW SITES
 - GEOLOGICAL SSSI
 - HISTORIC GARDENS AND DESIGNED LANDSCAPES
 - LISTED BUILDINGS
 - MIXED SSSI
 - NATIONAL NATURE RESERVES
 - NATIONAL SCENIC AREAS
 - RAMSAR SITE
 - SAC (SPECIAL AREA OF CONSERVATION)
 - SCHEDULED MONUMENTS
 - SPA (SPECIAL PROTECTION AREA)
 - PEAT AREAS
 - ROCK CUTTING



LONG SECTION
SCALE 1:2500H/1:500V

PROPOSED	EXISTING	HORIZ. ALIGN.	VERTICAL ALIGN.	CHAINAGE
288.820	288.881			40+000.0
288.681	288.681			40+040.0
288.461	288.481			40+080.0
288.281	288.281			40+120.0
288.059	288.081			40+160.0
287.870	287.881			40+200.0
287.651	287.681			40+240.0
287.457	287.481			40+280.0
287.248	287.281			40+320.0
287.031	287.081			40+360.0
286.803	286.881			40+400.0
286.589	286.681			40+440.0
286.383	286.481			40+480.0
286.189	286.281			40+520.0
286.018	286.081			40+560.0
285.771	285.881			40+600.0
285.582	285.681			40+640.0
285.250	285.481			40+680.0
285.016	285.281			40+720.0
284.938	285.081			40+760.0
284.682	284.881			40+800.0
284.196	284.681			40+840.0
283.885	284.481			40+880.0
283.956	284.281			40+920.0
283.821	284.081			40+960.0
283.833	283.881			41+000.0
283.952	283.681			41+040.0
283.786	283.481			41+080.0
283.580	283.281			41+120.0
283.285	283.081			41+160.0
283.084	282.881			41+200.0
282.917	282.681			41+240.0
282.743	282.481			41+280.0
282.586	282.281			41+320.0
282.347	282.081			41+360.0
282.092	281.881			41+400.0
281.823	281.681			41+440.0
281.640	281.481			41+480.0
281.378	281.281			41+520.0
281.456	281.081			41+560.0
280.983	280.881			41+600.0
280.683	280.681			41+640.0
280.386	280.478			41+680.0
280.377	280.268			41+720.0
280.203	280.168			41+760.0
280.032	279.974			41+800.0
279.877	279.755			41+840.0
279.546	279.528			41+880.0
279.303	279.293			41+920.0
278.011	279.050			41+960.0
278.829	278.800			42+000.0
278.605	278.542			42+040.0
278.289	278.277			42+080.0
277.978	278.003			42+120.0
277.707	277.722			42+160.0
277.412	277.434			42+200.0
277.194	277.137			42+240.0
276.959	276.833			42+280.0
276.613	276.521			42+320.0
275.484	276.202			42+360.0
275.227	275.975			42+400.0
274.857	275.540			42+440.0
275.305	275.197			42+480.0
275.029	274.847			42+520.0
274.356	274.489			42+560.0
273.886	274.124			42+600.0
273.574	273.750			42+640.0
273.532	273.389			42+680.0
273.227	272.980			42+720.0
273.027	272.584			42+760.0
272.793	272.180			42+800.0
272.495	271.768			42+840.0
272.102	271.349			42+880.0
271.833	270.922			42+920.0
271.429	270.503			42+960.0
271.283	270.100			43+000.0
271.027	269.714			43+040.0

REV	SUIT	DATE	DESCRIPTION	BY	APP
P01	S2	17-11-15	FIRST ISSUE	RY	RG

ch2m FAIRHURST
 CH2M HILL Fairhurst JV
 C/O: City Park 368 Alexandra Parade Glasgow G3 3AU
 Tel +44 (0)141 552 2000 Fax +44 (0)141 552 2525

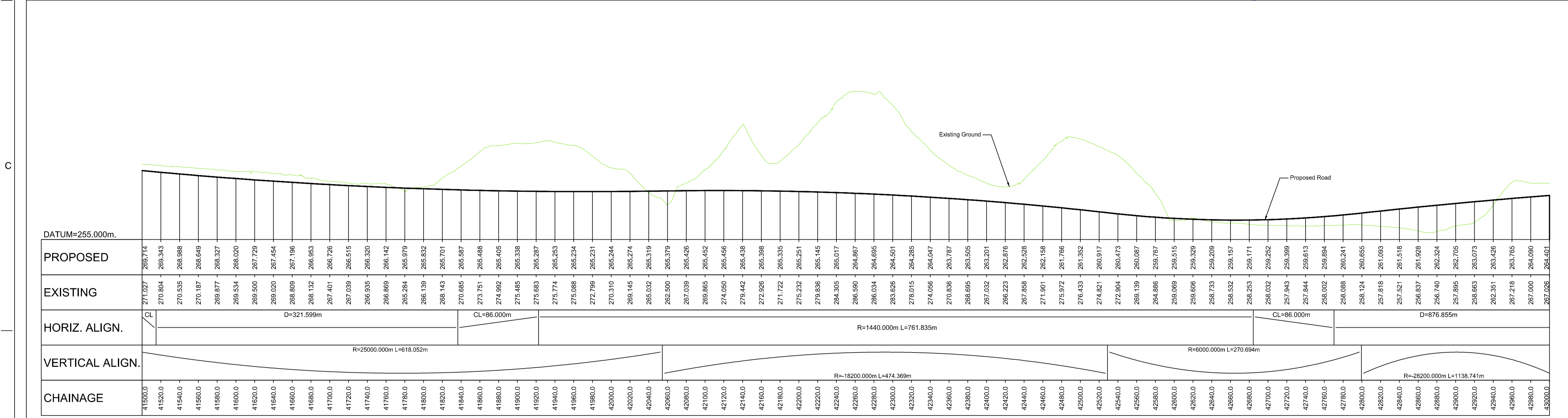
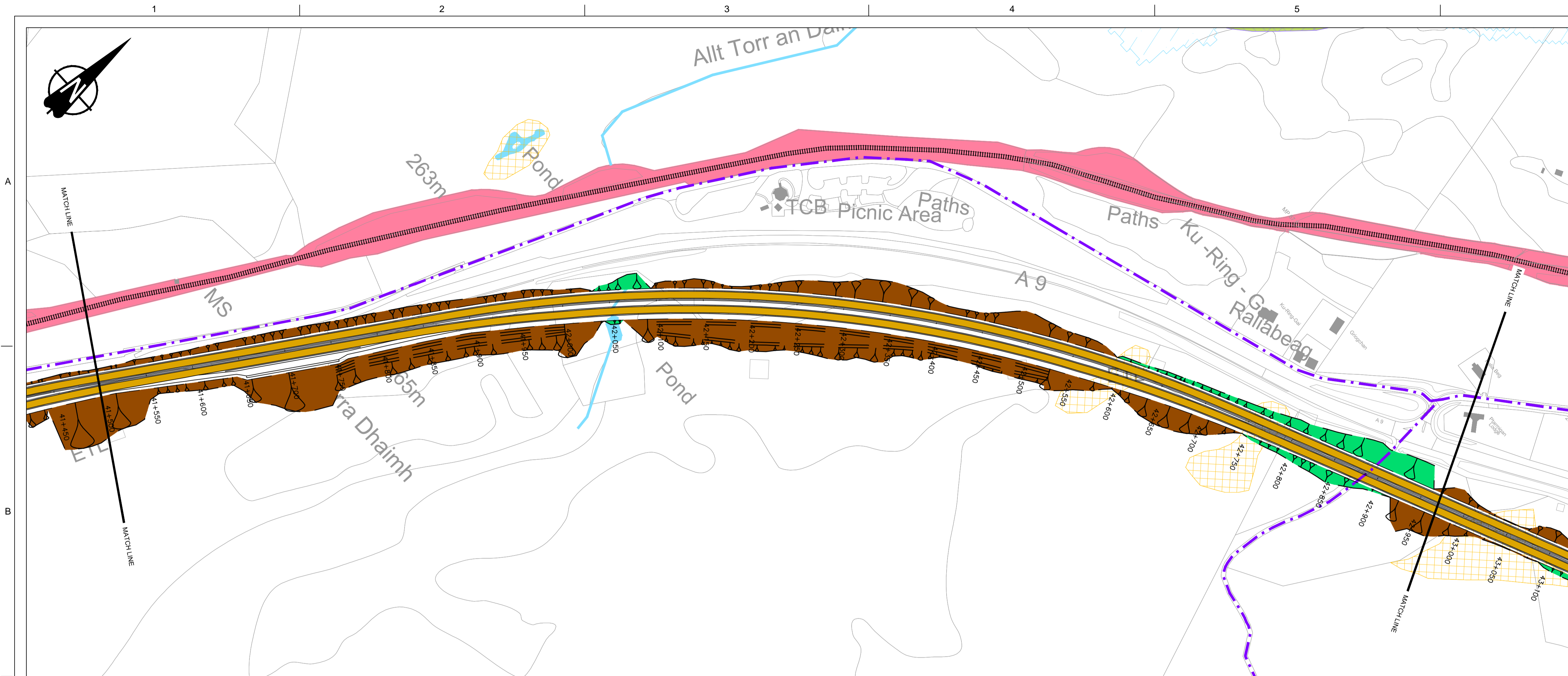
TRANSPORT SCOTLAND
A9 DUALLING
 PERTH TO INVERNESS
 Crubenmore to Kincaig

PROJECT 09
CRUBENMORE TO KINCRAIG
MAINLINE DMRB - ALIGNMENT
SECTION 2 OPTION 2B

DESIGN:	DRAWN:	CHK:	APP:
A Campbell	R Young	B Okunfolami	R Gray
1:2500 at A1			
DATE:	27/10/15		
PROJ:	97318		
DWG:	A9P09-CFJ-HML-J_ML408_ML-DR-RD-0001		
SHEET:	1 of 4	REVISION:	P01
SUITABILITY:	S2		

Reproduced by permission of Ordnance Survey on behalf of Her Majesty's Stationery Office. © Crown copyright and database right 2015. All rights reserved. Ordnance Survey Licence Number: 100046668.

A9P09-CFJ-HML-J_ML408_ML-SK-RD-0001.dwg



LONG SECTION
SCALE 1:2500H/1:500V

GENERAL NOTES

1. ALL DIMENSIONS IN METRES UNLESS STATED OTHERWISE.

- LEGEND:**
- HYDROLOGY**
- RIVER / STREAM / LOCHS
 - SEPA FLOOD MAPPING (1:200 YEAR)
- INFRASTRUCTURE**
- BEAULTY TO DENNY PYLONS
 - RAIL
 - BUILDINGS
 - NMU FACILITIES (PEDESTRIAN, CYCLIST AND EQUESTRIAN ROUTES)
 - CARRIAGEWAY
 - NATURAL EARTHWORKS SLOPE
 - NATURAL EARTHWORKS CUT
 - VARIABLE EARTHWORKS
- KEY ENVIRONMENTAL CONSTRAINTS**
- ANCIENT WOODLANDS (INVENTORY)
 - BATTLEFIELD SITES
 - BIOLOGICAL SSSI
 - CAIRNGORMS NATIONAL PARK (BOUNDARY)
 - CONSERVATION AREAS
 - GEOLOGICAL CONSERVATION REVIEW SITES
 - GEOLOGICAL SSSI
 - HISTORIC GARDENS AND DESIGNED LANDSCAPES
 - LISTED BUILDINGS
 - MIXED SSSI
 - NATIONAL NATURE RESERVES
 - NATIONAL SCENIC AREAS
 - RAMSAR SITE
 - SAC (SPECIAL AREA OF CONSERVATION)
 - SCHEDULED MONUMENTS
 - SPA (SPECIAL PROTECTION AREA)
 - PEAT AREAS
 - ROCK CUTTING

REV	SUIT	DATE	DESCRIPTION	BY	APP
P01	S2	11-11-15	FIRST ISSUE	RY	RG

ch2m FAIRHURST
CH2M HILL Fairhurst JV
C/O: City Park 368 Alexandra Parade Glasgow G31 3AU
Tel +44 (0)141 552 2000 Fax +44 (0)141 552 2525



PROJECT 09
CRUBENMORE TO KINCRAIG
MAINLINE DMRB - ALIGNMENT
SECTION 2 OPTION 2B

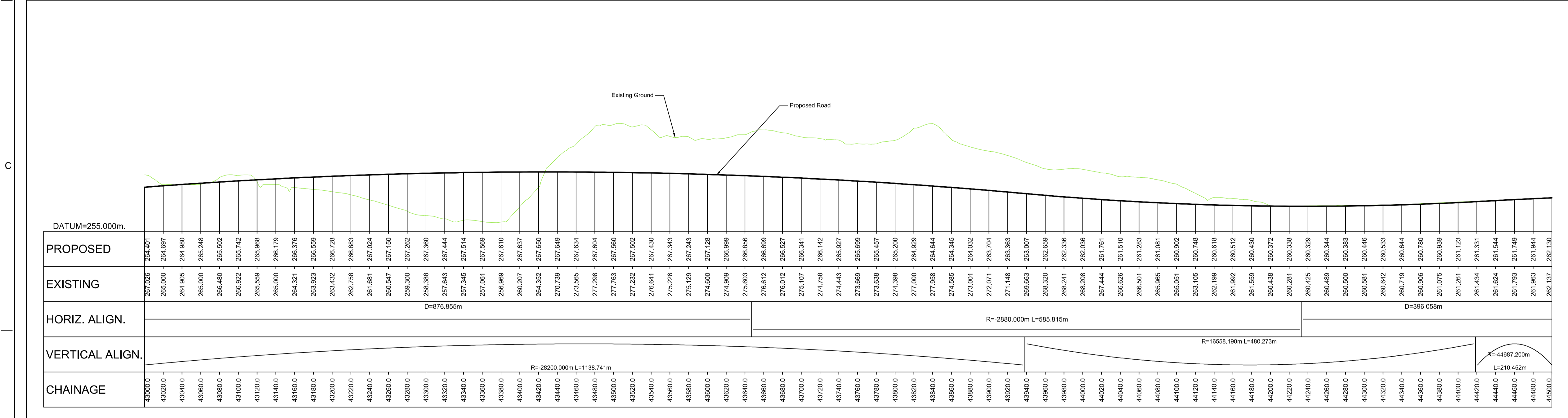
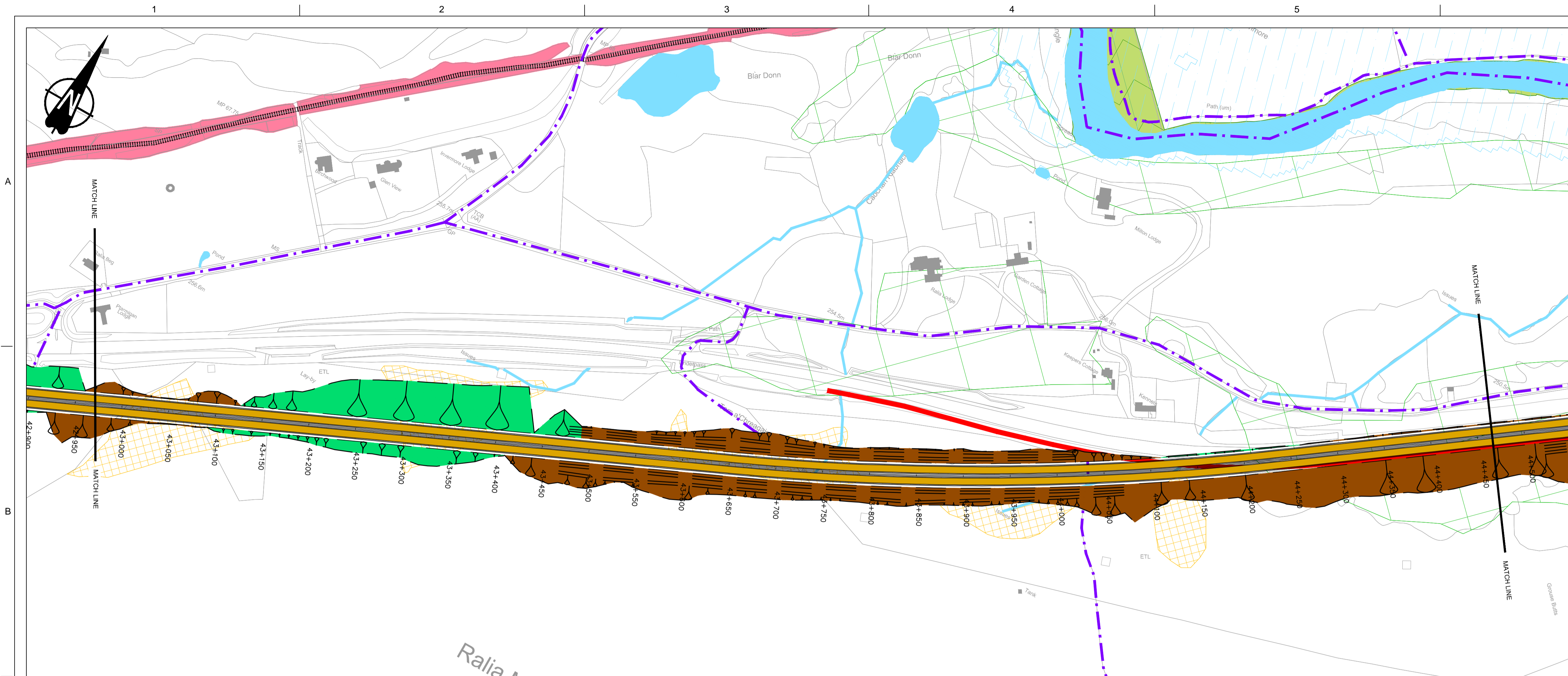
DESIGN:	DRAWN:	CHK:	APP:
A Campbell	R Young	B Okunfolami	R Gray

1:2500 at A1

DATE:	28/10/15
PROJ:	97318
DWG:	A9P09-CFJ-HML-J_ML408_ML-DR-RD-0002
SHEET:	2 of 4
REVISION:	P01
SUITABILITY:	S2

Reproduced by permission of Ordnance Survey on behalf of Her Majesty's Stationery Office, © Crown copyright and database right 2015. All rights reserved. Ordnance Survey Licence Number: 100046668.

A9P09-CFJ-HML-J_ML408_ML-SK-RD-0002.dwg



LONG SECTION
SCALE 1:2500H/1:500V

GENERAL NOTES

1. ALL DIMENSIONS IN METRES UNLESS STATED OTHERWISE.

- LEGEND:**
- HYDROLOGY**
- RIVER / STREAM / LOCHS
 - SEPA FLOOD MAPPING (1:200 YEAR)
- INFRASTRUCTURE**
- BEAULTY TO DENNY PYLONS
 - RAIL
 - BUILDINGS
 - NMU FACILITIES (PEDESTRIAN, CYCLIST AND EQUESTRIAN ROUTES)
 - CARRIAGEWAY
 - NATURAL EARTHWORKS SLOPE
 - NATURAL EARTHWORKS CUT
 - VARIABLE EARTHWORKS
- KEY ENVIRONMENTAL CONSTRAINTS**
- ANCIENT WOODLANDS (INVENTORY)
 - BATTLEFIELD SITES
 - BIOLOGICAL SSSI
 - CAIRNGORMS NATIONAL PARK (BOUNDARY)
 - CONSERVATION AREAS
 - GEOLOGICAL CONSERVATION REVIEW SITES
 - GEOLOGICAL SSSI
 - HISTORIC GARDENS AND DESIGNED LANDSCAPES
 - LISTED BUILDINGS
 - MIXED SSSI
 - NATIONAL NATURE RESERVES
 - NATIONAL SCENIC AREAS
 - RAMSAR SITE
 - SAC (SPECIAL AREA OF CONSERVATION)
 - SCHEDULED MONUMENTS
 - SPA (SPECIAL PROTECTION AREA)
 - PEAT AREAS
 - ROCK CUTTING

REV	SUIT	DATE	DESCRIPTION	BY	APP
P01	S2	17-11-15	FIRST ISSUE	RY	RG

ch2m FAIRHURST
CH2M HILL Fairhurst JV
C/O: City Park 368 Alexandra Parade Glasgow G31 3AU
Tel +44 (0)141 552 2000 Fax +44 (0)141 552 2525



PROJECT 09
CRUBENMORE TO KIN CRAIG
MAINLINE DMRB - ALIGNMENT
SECTION 2 OPTION 2B

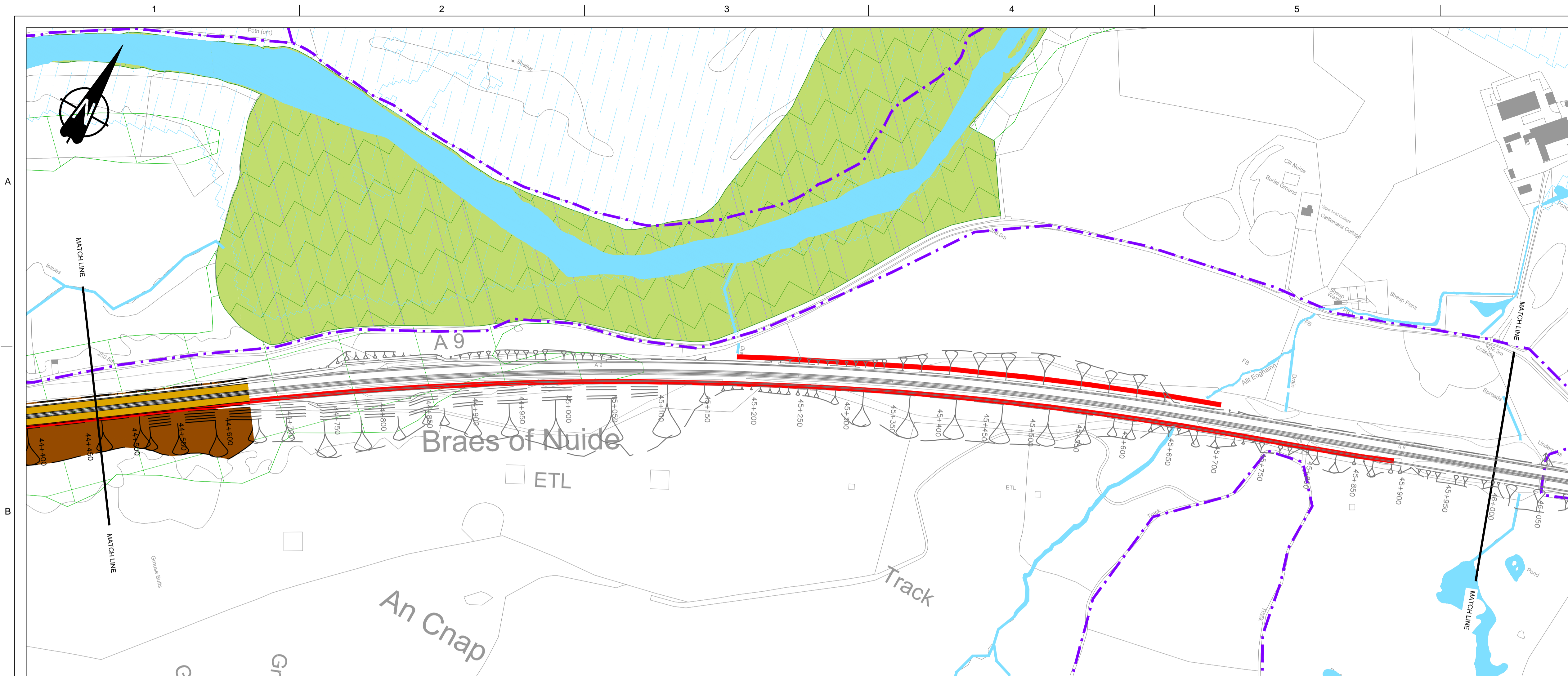
DESIGN:	DRAWN:	CHK:	APP:
A Campbell	R Young	B Okunfolami	R Gray

1:2500 at A1

DATE:	27/10/15
PROJ:	97318
DWG:	A9P09-CFJ-HML-J_ML408_ML-DR-RD-0003
SHEET:	3 of 4
REVISION:	P01
SUITABILITY:	S2

Reproduced by permission of Ordnance Survey on behalf of Her Majesty's Stationery Office, © Crown copyright and database right 2015. All rights reserved. Ordnance Survey Licence Number: 100046668.

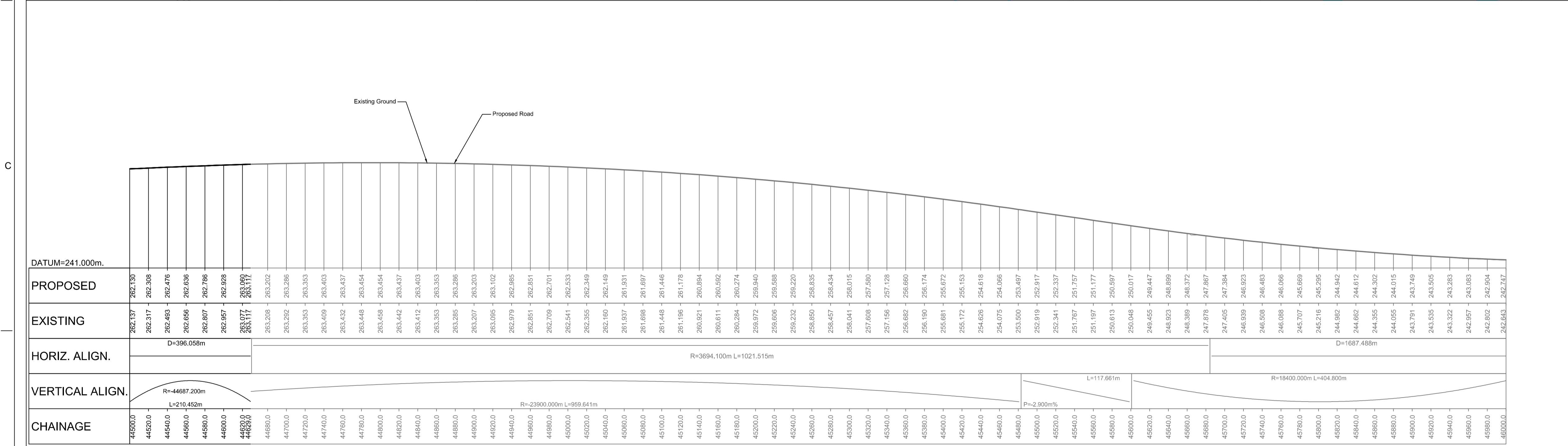
A9P09-CFJ-HML-J_ML408_ML-SK-RD-0003.dwg



GENERAL NOTES

1. ALL DIMENSIONS IN METRES UNLESS STATED OTHERWISE.

- LEGEND:**
- HYDROLOGY**
- RIVER / STREAM / LOCHS
 - SEPA FLOOD MAPPING (1:200 YEAR)
- INFRASTRUCTURE**
- BEAUTY TO DENNY PYLONS
 - RAIL
 - BUILDINGS
 - NMU FACILITIES (PEDESTRIAN, CYCLIST AND EQUESTRIAN ROUTES)
 - CARRIAGEWAY
 - NATURAL EARTHWORKS SLOPE
 - NATURAL EARTHWORKS CUT
 - VARIABLE EARTHWORKS
- KEY ENVIRONMENTAL CONSTRAINTS**
- ANCIENT WOODLANDS (INVENTORY)
 - BATTLEFIELD SITES
 - BIOLOGICAL SSSI
 - CAIRNGORMS NATIONAL PARK (BOUNDARY)
 - CONSERVATION AREAS
 - GEOLOGICAL CONSERVATION REVIEW SITES
 - GEOLOGICAL SSSI
 - HISTORIC GARDENS AND DESIGNED LANDSCAPES
 - LISTED BUILDINGS
 - MIXED SSSI
 - NATIONAL NATURE RESERVES
 - NATIONAL SCENIC AREAS
 - RAMSAR SITE
 - SAC (SPECIAL AREA OF CONSERVATION)
 - SCHEDULED MONUMENTS
 - SPA (SPECIAL PROTECTION AREA)
 - PEAT AREAS
 - ROCK CUTTING



LONG SECTION
SCALE 1:2500H/1:500V

P01	S2	17-11-15	FIRST ISSUE	RY	RG
REV	SUIT	DATE	DESCRIPTION	BY	APP

ch2m FAIRHURST
CH2M HILL Fairhurst JV
C/O: City Park 368 Alexandra Parade Glasgow G31 3AU
Tel +44 (0)141 552 2000 Fax +44 (0)141 552 2525

TRANSPORT SCOTLAND
COMMERCIAL ALBA

A9 DUALLING
PERTH TO INVERNESS
Crubrenmore to Kincaig

PROJECT 09
CRUBENMORE TO KINCAIG
MAINLINE DMRB - ALIGNMENT
SECTION 2 OPTION 2B

DESIGN:	DRAWN:	CHK:	APP:
A Campbell	R Young	B Okunfolami	R Gray

1:2500 at A1

DATE:	27/10/15
PROJ:	97318
DWG:	A9P09-CFJ-HML-J_ML408_ML-DR-RD-0004
SHEET:	4 of 4
REVISION:	P01
SUITABILITY:	S2

Reproduced by permission of Ordnance Survey on behalf of Her Majesty's Stationery Office. © Crown copyright and database right 2015. All rights reserved. Ordnance Survey Licence Number: 100046668.

A9P09-CFJ-HML-J_ML408_ML-SK-RD-0004.dwg