

- Legend**
- Corridor 10 extents
 - Corridor 11 extents
 - Corridor 10 & 11 extents
 - Corridor 10 – approximate centre of corridor
 - Corridor 11 – approximate centre of corridor
 - Corridor 10 & 11 – approximate centre of corridor
 - A Listed Building
 - Great Trails
 - Core Paths
 - Scheduled Monument
 - Conservation Area
 - Garden and Designed Landscape (GDL)
 - Special Protection Area (SPA)
 - Special Area of Conservation (SAC)
 - Wetlands of International Importance (Ramsar Sites)
 - Ancient and Native Woodlands
 - Site of Special Scientific Interest (SSSI)
 - Marine Protected Area (MPA)
 - National Scenic Area
 - Flood Mapping Coastal Extents – Medium Likelihood
 - Flood Mapping River Extents – Medium Likelihood
 - Loch Lomond and The Trossachs National Park

P01	12/02/2021	For Information	TS	RC	SB	DR
Rev.	Rev. Date	Purpose of revision	Orig/Dwn	Checkd	Rev'd	Apprv'd

Jacobs AECOM

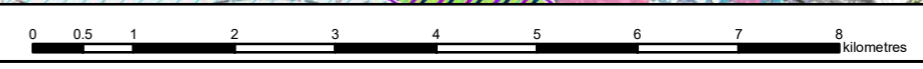


Project
ACCESS ARGYLL & BUTE [A83]

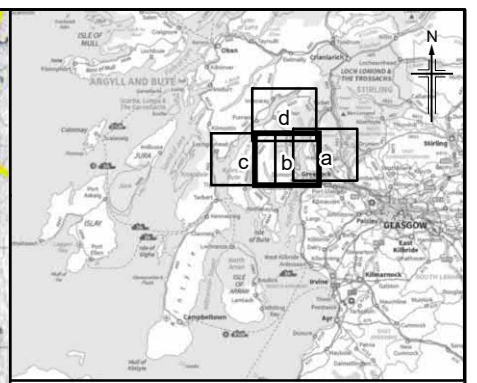
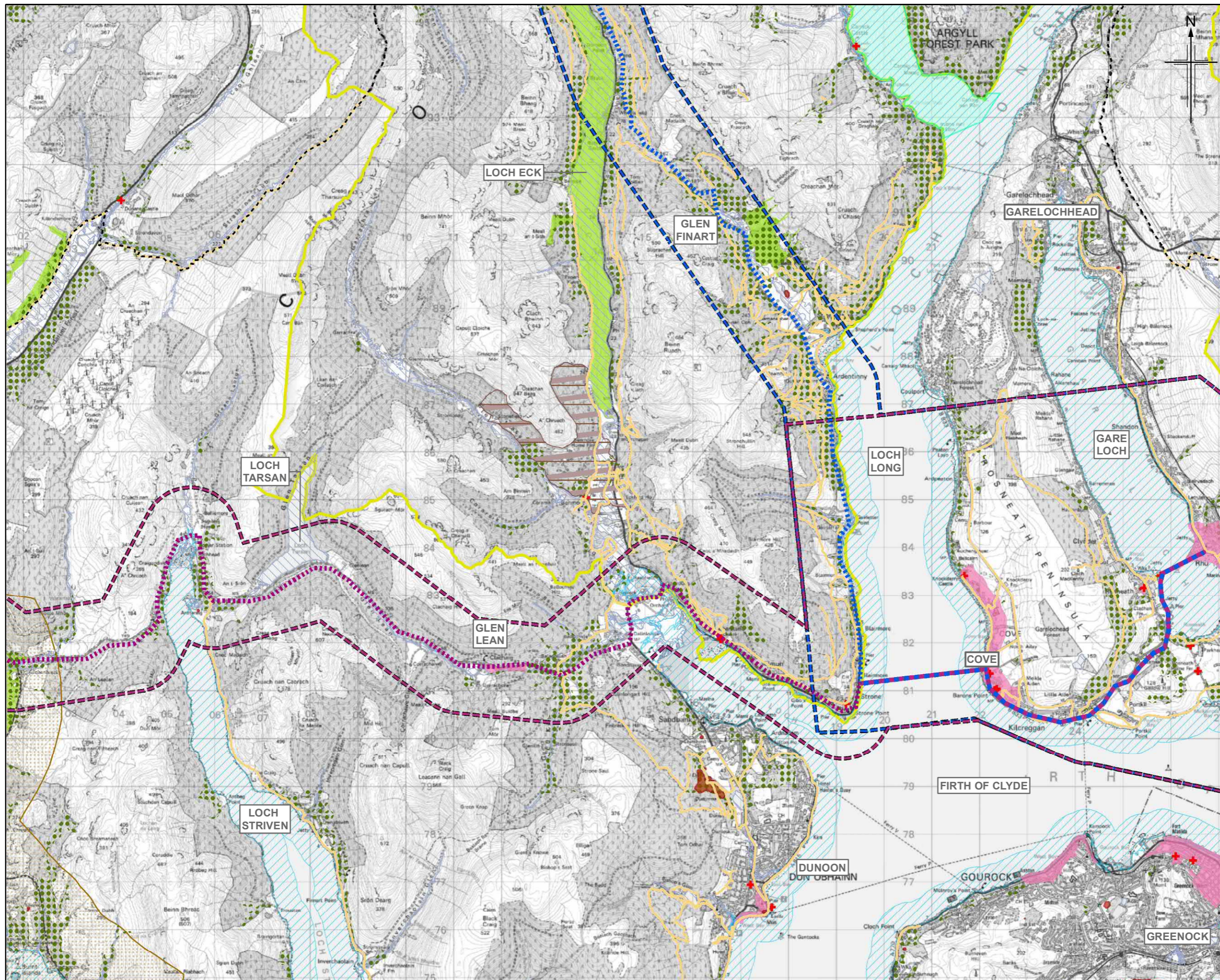
Drawing title
**FIGURE C.5A
 PRELIMINARY ASSESSMENT
 CORRIDORS 10,11**

Sheet 01 of 04

Drawing Status	FOR INFORMATION	Suitability	S2
Scale	1:75,000 @ A3	DO NOT SCALE	
Jacobs No.	B2356701		
Drawing number	A83AAB-JAC-GEN-XX XX-DR-CX-9004	Rev	P01



Limitation: This document has been prepared on behalf of, and for the exclusive use of Jacobs and AECOM client, and is subject to, and issued in accordance with, the provisions of the contract between Jacobs, AECOM and the client. Jacobs and AECOM accepts no liability or responsibility whatsoever for, or in respect of, any use of, or reliance upon, this document by any third party.



- Legend**
- Corridor 10 extents
 - Corridor 11 extents
 - Corridor 10 & 11 extents
 - Corridor 10 – approximate centre of corridor
 - Corridor 11 – approximate centre of corridor
 - Corridor 10 & 11 – approximate centre of corridor
 - A Listed Building
 - Great Trails
 - Core Paths
 - Scheduled Monument
 - Conservation Area
 - Garden and Designed Landscape (GDL)
 - Special Protection Area (SPA)
 - Special Area of Conservation (SAC)
 - Wetlands of International Importance (Ramsar Sites)
 - Ancient and Native Woodlands
 - Site of Special Scientific Interest (SSSI)
 - Marine Protected Area (MPA)
 - National Scenic Area
 - Flood Mapping Coastal Extents – Medium Likelihood
 - Flood Mapping River Extents – Medium Likelihood
 - Loch Lomond and The Trossachs National Park

Rev.	12/02/2021	For Information	TS	RC	SB	DR
Rev.	Rev. Date	Purpose of revision	Orig/Dwn	Checkd	Rev'd	Apprv'd

JACOBS AECOM

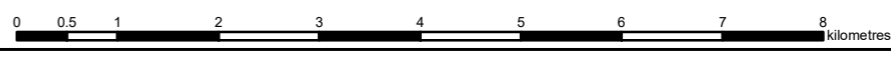


Drawing title
**FIGURE C.5B
 PRELIMINARY ASSESSMENT
 CORRIDORS 10,11**

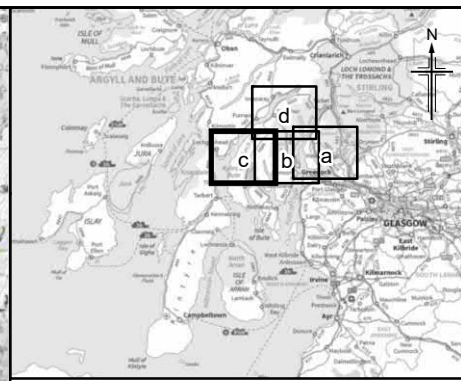
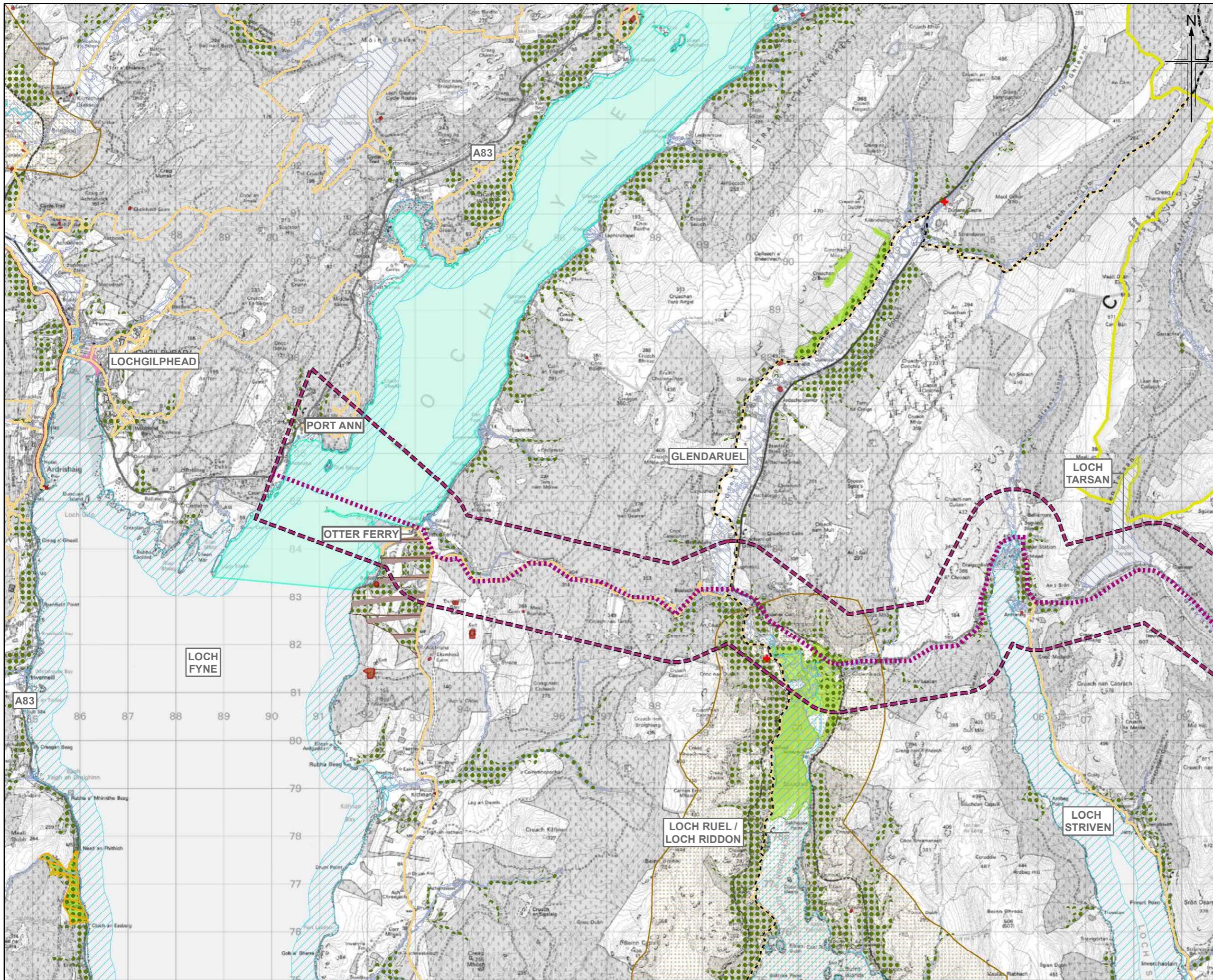
Sheet 02 of 04

Drawing Status	FOR INFORMATION	Suitability	S2
Scale	1:75,000 @ A3	DO NOT SCALE	
JACOBS No.	B2356701		
Client No.			
Drawing number	A83AAB-JAC-GEN-XX XX-DR-CX-9004	Rev	P01

© Crown copyright and database right 2021. All rights reserved. Ordnance Survey Licence number 100046668. Contains SNH, Argyll and Bute Council, Loch Lomond & Trossachs National Park information licensed under the OpenGovernment Licence v3.0. Contains Historic Environment Scotland and Ordnance Survey data © Historic Environment Scotland - Scottish Charity No. SC045925 © Crown copyright and database right 2021. © Crown Copyright. SEPA Licence Number 100016991 (2021). All Rights Reserved.



Limitation: This document has been prepared on behalf of, and for the exclusive use of Jacobs and AECOM client, and is subject to, and issued in accordance with, the provisions of the contract between Jacobs, AECOM and the client. Jacobs and AECOM accept no liability or responsibility whatsoever for, or in respect of, any use of, or reliance upon, this document by any third party.



- Legend**
- Corridor 10 extents
 - Corridor 11 extents
 - Corridor 10 & 11 extents
 - Corridor 10 – approximate centre of corridor
 - Corridor 11 – approximate centre of corridor
 - Corridor 10 & 11 – approximate centre of corridor
 - A Listed Building
 - Great Trails
 - Core Paths
 - Scheduled Monument
 - Conservation Area
 - Garden and Designed Landscape (GDL)
 - Special Protection Area (SPA)
 - Special Area of Conservation (SAC)
 - Wetlands of International Importance (Ramsar Sites)
 - Ancient and Native Woodlands
 - Site of Special Scientific Interest (SSSI)
 - Marine Protected Area (MPA)
 - National Scenic Area
 - Flood Mapping Coastal Extents – Medium Likelihood
 - Flood Mapping River Extents – Medium Likelihood
 - Loch Lomond and The Trossachs National Park

P01	12/02/2021	For Information	TS	RC	SB	DR
Rev.	Rev. Date	Purpose of revision	Orig/Dwn	Checkd	Rev'd	Apprv'd

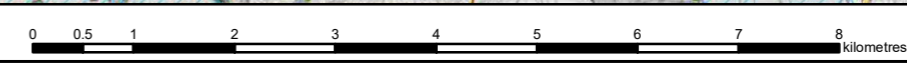
JACOBS AECOM



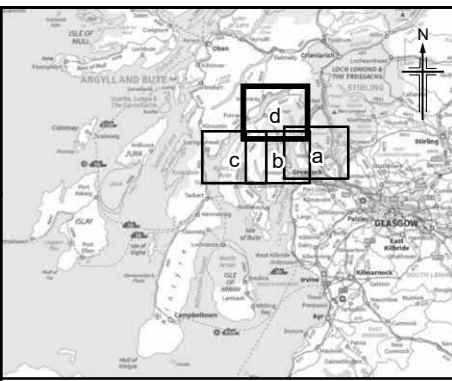
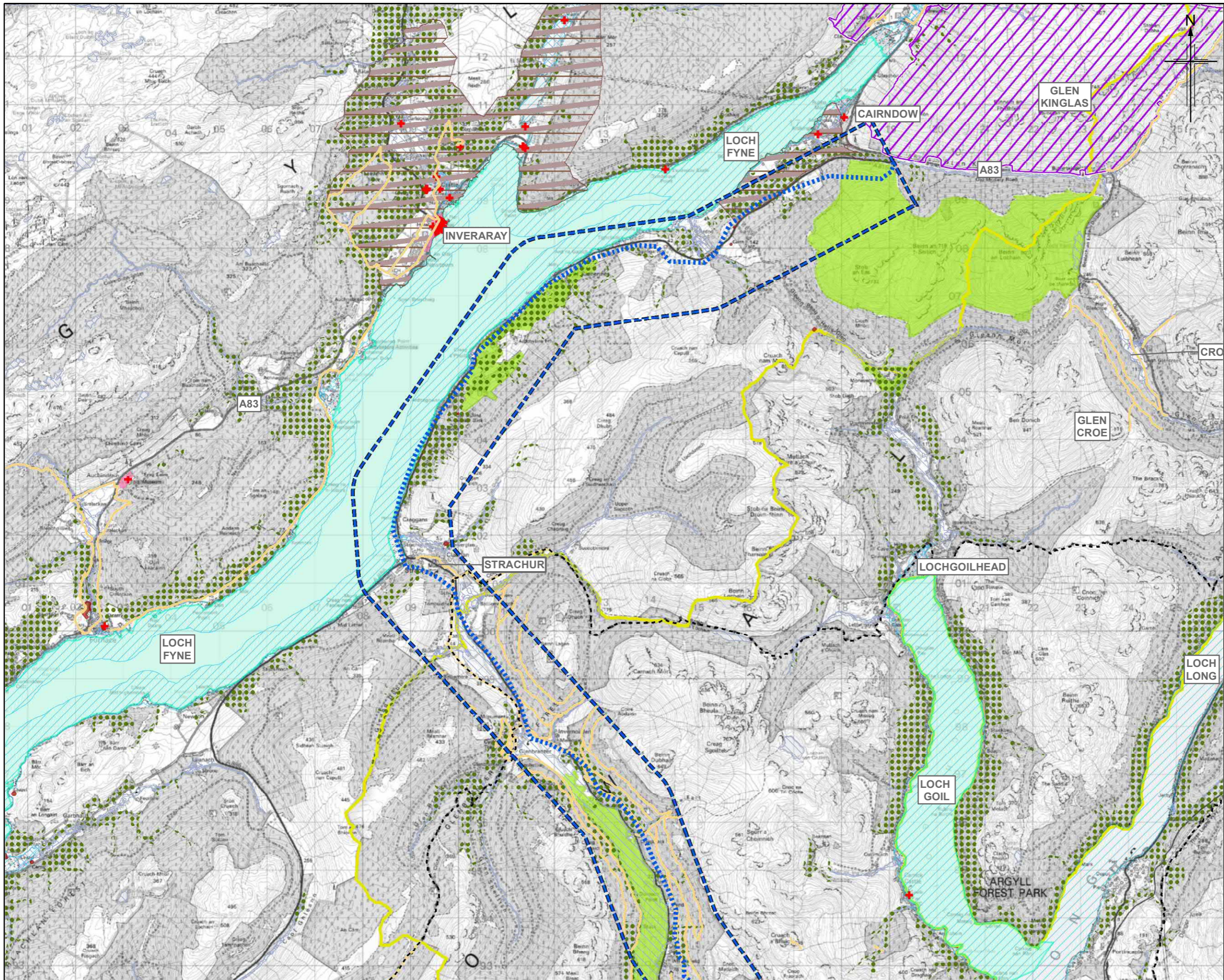
Drawing title
**FIGURE C.5C
 PRELIMINARY ASSESSMENT
 CORRIDORS 10,11**

Sheet 03 of 04

Drawing Status	FOR INFORMATION	Suitability	S2
Scale	1:75,000 @ A3	DO NOT SCALE	
JACOBS No.	B2356701		
Drawing number	A83AAB-JAC-GEN-XX XX-DR-CX-9004	Rev	P01



Limitation: This document has been prepared on behalf of, and for the exclusive use of Jacobs and AECOM client, and is subject to, and issued in accordance with, the provisions of the contract between Jacobs, AECOM and the client. Jacobs and AECOM accepts no liability or responsibility whatsoever for, or in respect of, any use of, or reliance upon, this document by any third party.



- Legend**
- Corridor 10 extents
 - Corridor 11 extents
 - Corridor 10 & 11 extents
 - Corridor 10 – approximate centre of corridor
 - Corridor 11 – approximate centre of corridor
 - Corridor 10 & 11 – approximate centre of corridor
 - A Listed Building
 - Great Trails
 - Core Paths
 - Scheduled Monument
 - Conservation Area
 - Garden and Designed Landscape (GDL)
 - Special Protection Area (SPA)
 - Special Area of Conservation (SAC)
 - Wetlands of International Importance (Ramsar Sites)
 - Ancient and Native Woodlands
 - Site of Special Scientific Interest (SSSI)
 - Marine Protected Area (MPA)
 - National Scenic Area
 - Flood Mapping Coastal Extents – Medium Likelihood
 - Flood Mapping River Extents – Medium Likelihood
 - Loch Lomond and The Trossachs National Park

Rev.	Rev. Date	For Information Purpose of revision	TS	RC	SB	DR
P01	12/02/2021					

Jacobs AECOM



Project
ACCESS ARGYLL & BUTE [A83]

Drawing title
**FIGURE C.5D
 PRELIMINARY ASSESSMENT
 CORRIDORS 10,11**

Drawing Status	FOR INFORMATION	Suitability	S2
Scale	1:75,000 @ A3	DO NOT SCALE	
Jacobs No.	B2356701		
Drawing number	A83AAB-JAC-GEN-XX XX-DR-CX-9004	Rev	P01

