

- Legend**
- Corridor 8 extents
  - Corridor 9 extents
  - Corridor 8 & 9 extents
  - Corridor 8A – approximate centre of corridor
  - Corridor 8B – approximate centre of corridor
  - Corridor 9 – approximate centre of corridor
  - A Listed Building
  - Great Trails
  - Core Paths
  - Scheduled Monument
  - Conservation
  - Garden and Designed Landscape
  - Special Protection Area
  - Special Area of Conservation (SAC)
  - Wetlands of International Importance (Ramsar Sites)
  - Ancient Woodland Inventory
  - Site of Special Scientific Interest (SSSI)
  - Marine Protected Area
  - National Scenic
  - Flood Mapping Coastal Extents – Medium Likelihood
  - Flood Mapping River Extents – Medium Likelihood
  - Loch Lomond and The Trossachs National Park

P01	12/02/2021	For Information	TS	RC	SB	DR
Rev.	Rev. Date	Purpose of revision	Orig/Dwn	Checkd	Rev'd	Apprv'd

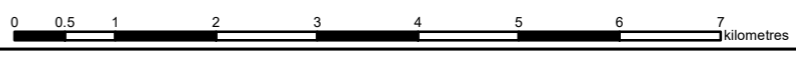
**Jacobs AECOM**

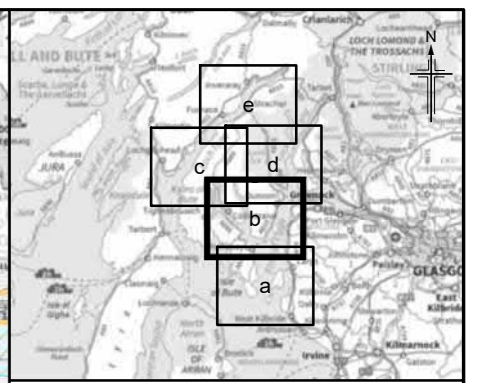
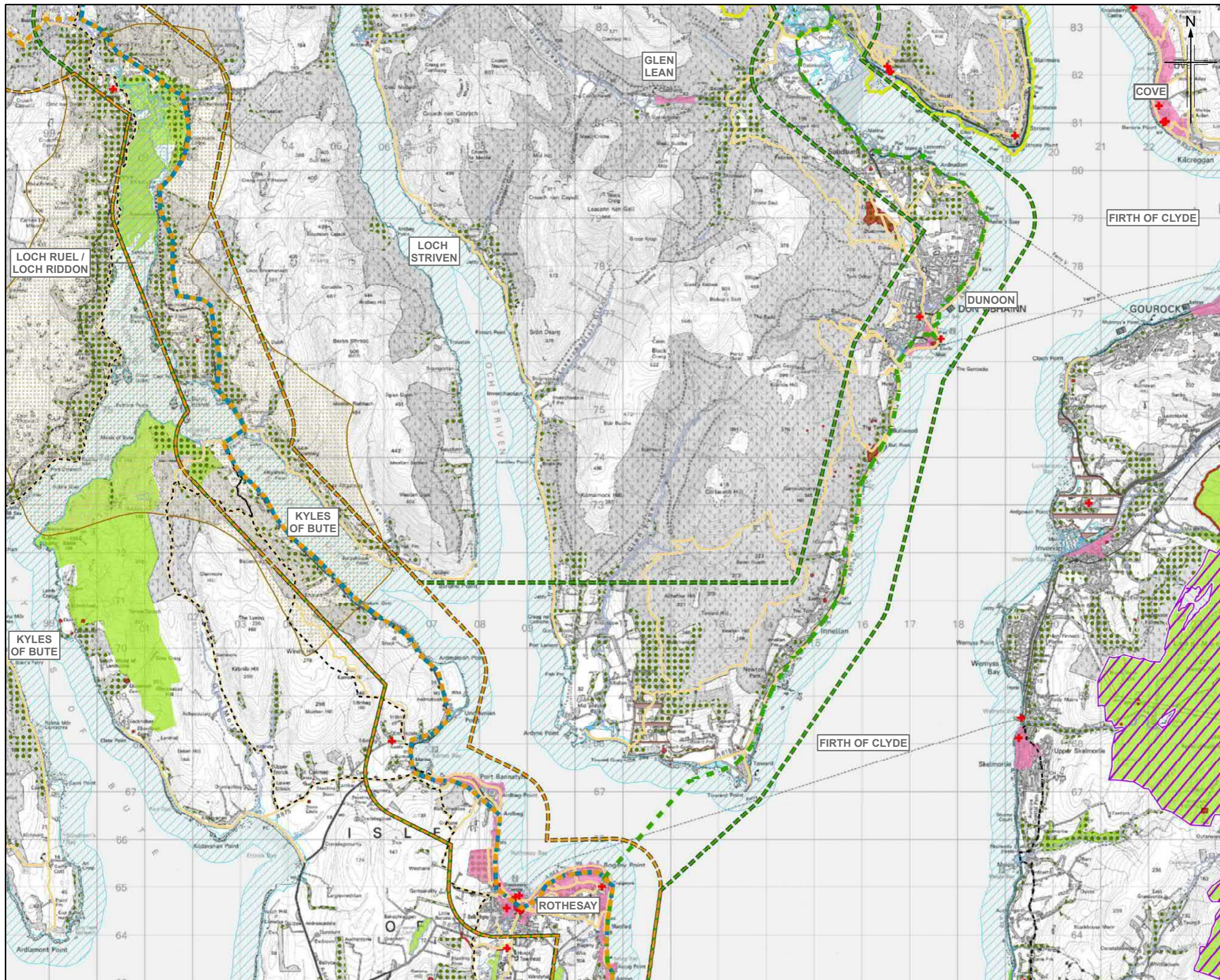


FIGURE C.4A  
PRELIMINARY ASSESSMENT  
CORRIDORS 8 & 9

Sheet 01 of 05

Drawing Status	FOR INFORMATION	Suitability	S2
Scale	1:75,000 @ A3	DO NOT SCALE	
Jacobs No.	B2356701		
Client No.			
Drawing number	A83AAB-JAC-GEN-XX XX-DR-CX-9003	Rev	P01





- Legend**
- Corridor 8 extents
  - Corridor 9 extents
  - Corridor 8 & 9 extents
  - Corridor 8A – approximate centre of corridor
  - Corridor 8B – approximate centre of corridor
  - Corridor 9 – approximate centre of corridor
  - A Listed Building
  - Great Trails
  - Core Paths
  - Scheduled Monument
  - Conservation
  - Garden and Designed Landscape
  - Special Protection Area
  - Special Area of Conservation (SAC)
  - Wetlands of International Importance (Ramsar Sites)
  - Ancient Woodland Inventory
  - Site of Special Scientific Interest (SSSI)
  - Marine Protected Area
  - National Scenic
  - Flood Mapping Coastal Extents – Medium Likelihood
  - Flood Mapping River Extents – Medium Likelihood
  - Loch Lomond and The Trossachs National Park

P01	12/02/2021	For Information	TS	RC	SB	DR
Rev.	Rev. Date	Purpose of revision	Orig/Dwn	Checkd	Rev'd	Apprv'd

**JACOBS AECOM**



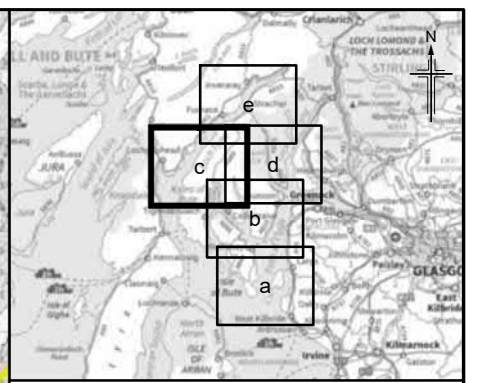
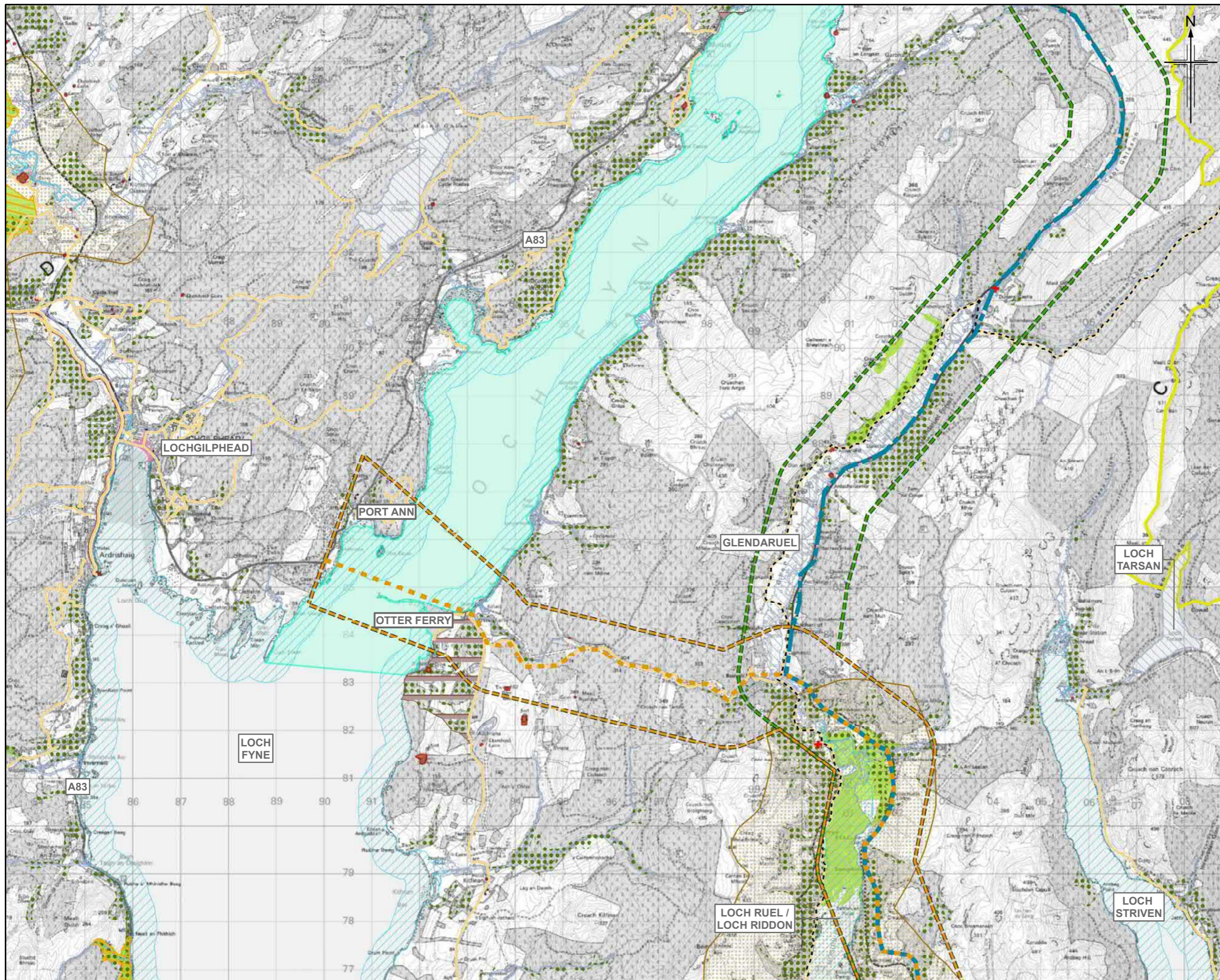
Drawing title  
**FIGURE C.4B  
 PRELIMINARY ASSESSMENT  
 CORRIDORS 8 & 9**

Sheet 02 of 05

Drawing Status	<b>FOR INFORMATION</b>	Suitability	<b>S2</b>
Scale	1:75,000 @ A3	DO NOT SCALE	
JACOBS No.	B2356701		
Client No.			
Drawing number	<b>A83AAB-JAC-GEN-XX XX-DR-CX-9003</b>	Rev	<b>P01</b>

© Copyright 2021 Jacobs UK Ltd and AECOM Limited. The concepts and information contained in this document are the property of Jacobs and AECOM. Use or copying of this document in whole or in part without the written permission of Jacobs and AECOM constitutes an infringement of copyright.  
 Limitation: This document has been prepared on behalf of, and for the exclusive use of Jacobs and AECOM client, and is subject to, and issued in accordance with, the provisions of the contract between Jacobs, AECOM and the client. Jacobs and AECOM accepts no liability or responsibility whatsoever for, or in respect of, any use of, or reliance upon, this document by any third party.





- Legend**
- Corridor 8 extents
  - Corridor 9 extents
  - Corridor 8 & 9 extents
  - Corridor 8A – approximate centre of corridor
  - Corridor 8B – approximate centre of corridor
  - Corridor 9 – approximate centre of corridor
  - A Listed Building
  - Great Trails
  - Core Paths
  - Scheduled Monument
  - Conservation
  - Garden and Designed Landscape
  - Special Protection Area
  - Special Area of Conservation (SAC)
  - Wetlands of International Importance (Ramsar Sites)
  - Ancient Woodland Inventory
  - Site of Special Scientific Interest (SSSI)
  - Marine Protected Area
  - National Scenic
  - Flood Mapping Coastal Extents – Medium Likelihood
  - Flood Mapping River Extents – Medium Likelihood
  - Loch Lomond and The Trossachs National Park

P01	12/02/2021	For Information	TS	RC	SB	DR
Rev.	Rev. Date	Purpose of revision	Orig/Dwn	Checkd	Rev'd	Appr'd

**JACOBS AECOM**

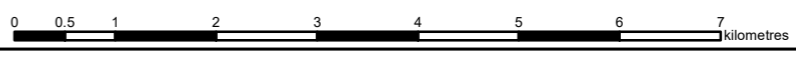


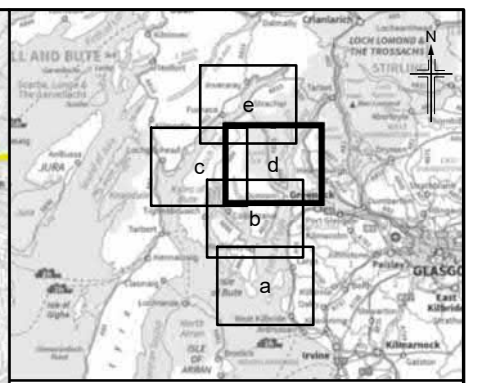
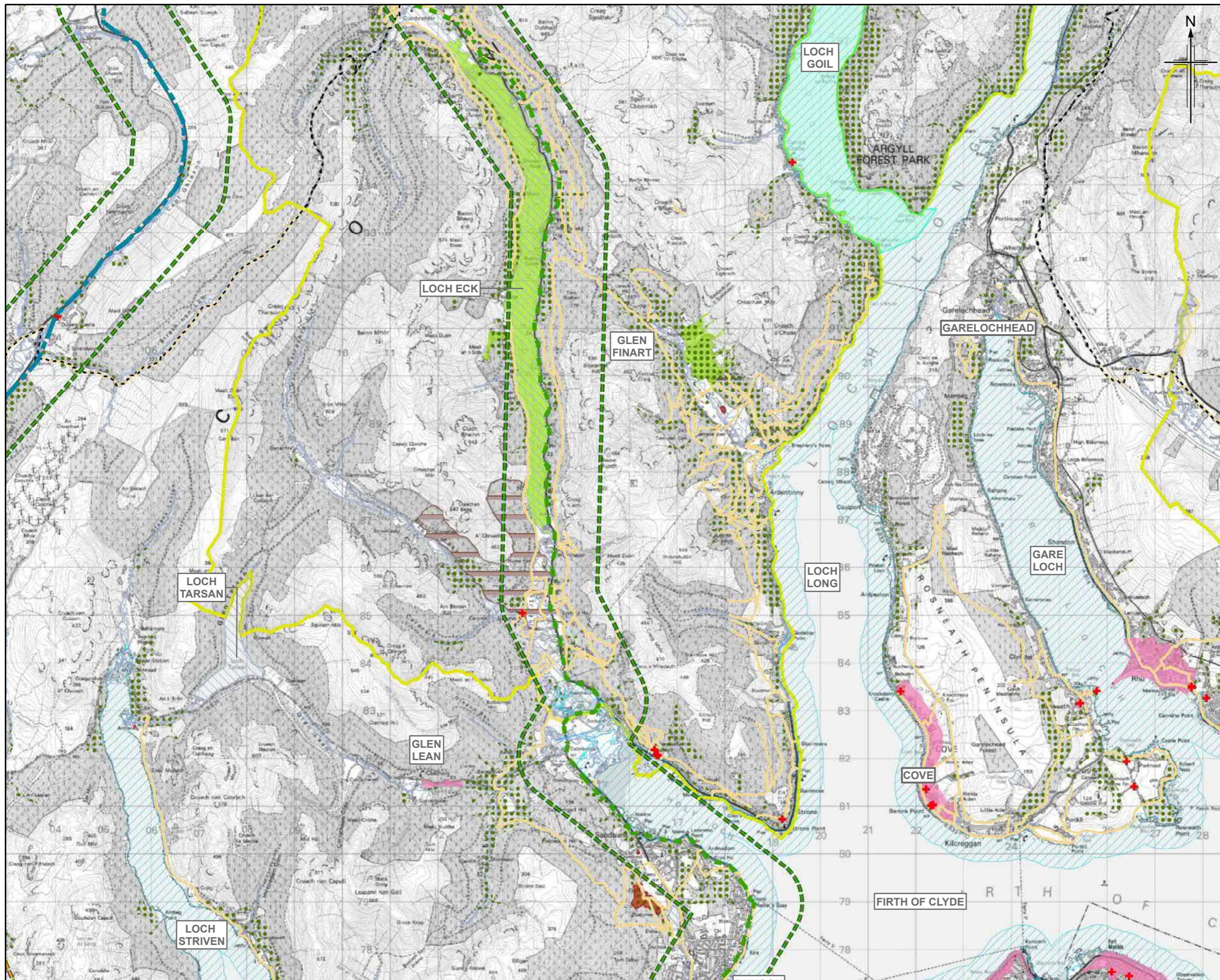
Drawing title  
**FIGURE C.4C  
 PRELIMINARY ASSESSMENT  
 CORRIDORS 8 & 9**

Sheet 03 of 05

Drawing Status	<b>FOR INFORMATION</b>	Suitability	<b>S2</b>
Scale	1:75,000 @ A3	DO NOT SCALE	
JACOBS No.	B2356701		
Client No.			
Drawing number	<b>A83AAB-JAC-GEN-XX XX-DR-CX-9003</b>	Rev	<b>P01</b>

© Copyright 2021 Jacobs UK Ltd and AECOM Limited. The concepts and information contained in this document are the property of Jacobs and AECOM. Use or copying of this document in whole or in part without the written permission of Jacobs and AECOM constitutes an infringement of copyright.  
 Limitation: This document has been prepared on behalf of, and for the exclusive use of, Jacobs and AECOM client, and is subject to, and issued in accordance with, the provisions of the contract between Jacobs, AECOM and the client. Jacobs and AECOM accept no liability or responsibility whatsoever for, or in respect of, any use of, or reliance upon, this document by any third party.





- Legend**
- Corridor 8 extents
  - Corridor 9 extents
  - Corridor 8 & 9 extents
  - Corridor 8A – approximate centre of corridor
  - Corridor 8B – approximate centre of corridor
  - Corridor 9 – approximate centre of corridor
  - A Listed Building
  - Great Trails
  - Core Paths
  - Scheduled Monument
  - Conservation
  - Garden and Designed Landscape
  - Special Protection Area
  - Special Area of Conservation (SAC)
  - Wetlands of International Importance (Ramsar Sites)
  - Ancient Woodland Inventory
  - Site of Special Scientific Interest (SSSI)
  - Marine Protected Area
  - National Scenic
  - Flood Mapping Coastal Extents – Medium Likelihood
  - Flood Mapping River Extents – Medium Likelihood
  - Loch Lomond and The Trossachs National Park

P01	12/02/2021	For Information	TS	RC	SB	DR
Rev.	Rev. Date	Purpose of revision	Orig/Dwn	Checkd	Rev'd	Apprv'd

**Jacobs AECOM**

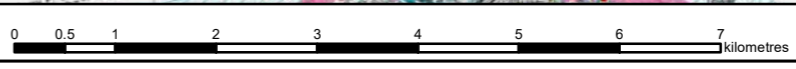


Drawing title  
**FIGURE C.4D  
 PRELIMINARY ASSESSMENT  
 CORRIDORS 8 & 9**

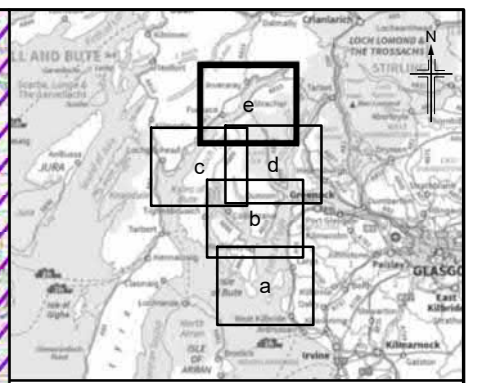
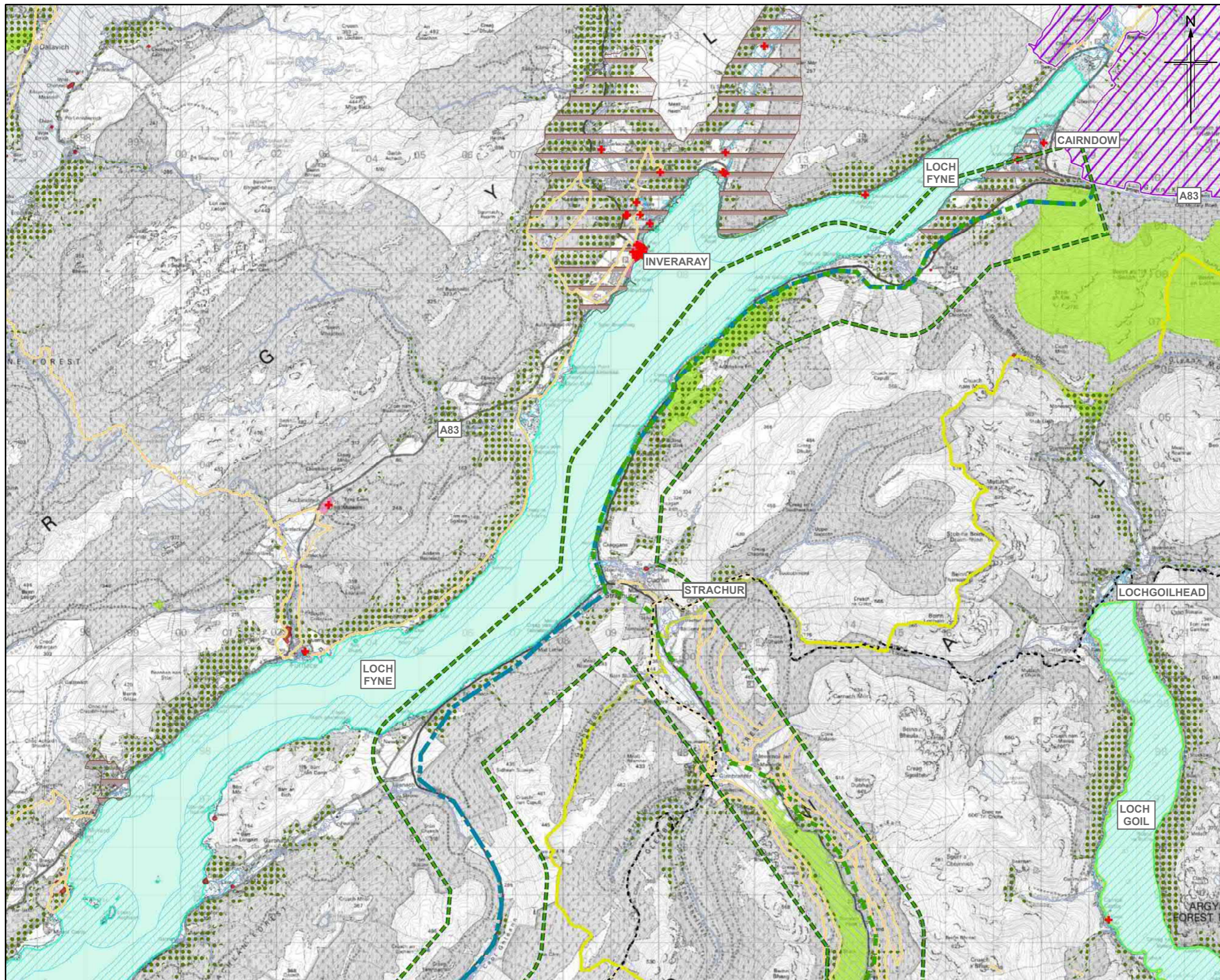
Sheet 04 of 05

Drawing Status	<b>FOR INFORMATION</b>	Suitability	<b>S2</b>
Scale	<b>1:75,000 @ A3</b>	DO NOT SCALE	
Jacobs No.	<b>B2356701</b>		
Client No.			
Drawing number	<b>A83AAB-JAC-GEN-XX XX-DR-CX-9003</b>	Rev	<b>P01</b>

© Crown copyright and database right 2021. All rights reserved. Ordnance Survey Licence number 100046668. Contains SNH, Argyll and Bute Council, Loch Lomond & Trossachs National Park information licensed under the Open Government Licence v3.0. Contains Historic Environment Scotland and Ordnance Survey data © Historic Environment Scotland - Scottish Charity No. SC045925 © Crown copyright and database right 2021. © Crown Copyright. SEPA Licence Number 100016991 (2021). All Rights Reserved.



Limitation: This document has been prepared on behalf of, and for the exclusive use of Jacobs and AECOM client, and is subject to, and issued in accordance with, the provisions of the contract between Jacobs, AECOM and the client. Jacobs and AECOM accept no liability or responsibility whatsoever for, or in respect of, any use of, or reliance upon, this document by any third party.



- Legend**
- Corridor 8 extents
  - Corridor 9 extents
  - Corridor 8 & 9 extents
  - Corridor 8A – approximate centre of corridor
  - Corridor 8B – approximate centre of corridor
  - Corridor 9 – approximate centre of corridor
  - A Listed Building
  - Great Trails
  - Core Paths
  - Scheduled Monument
  - Conservation
  - Garden and Designed Landscape
  - Special Protection Area
  - Special Area of Conservation (SAC)
  - Wetlands of International Importance (Ramsar Sites)
  - Ancient Woodland Inventory
  - Site of Special Scientific Interest (SSSI)
  - Marine Protected Area
  - National Scenic
  - Flood Mapping Coastal Extents – Medium Likelihood
  - Flood Mapping River Extents – Medium Likelihood
  - Loch Lomond and The Trossachs National Park

P01	12/02/2021	For Information	TS	RC	SB	DR
Rev.	Rev. Date	Purpose of revision	Orig/Dwn	Checkd	Rev'd	Apprv'd

**Jacobs AECOM**



Client  
Project  
Drawing title

FIGURE C.4E  
PRELIMINARY ASSESSMENT  
CORRIDORS 8 & 9

Drawing Status	FOR INFORMATION	Suitability	S2
Scale	1:75,000 @ A3	DO NOT SCALE	
Jacobs No.	B2356701		
Client No.			
Drawing number	A83AAB-JAC-GEN-XX XX-DR-CX-9003	Rev	P01

© Copyright 2021 Jacobs UK Ltd and AECOM Limited. The concepts and information contained in this document are the property of Jacobs and AECOM. Use or copying of this document in whole or in part without the written permission of Jacobs and AECOM constitutes an infringement of copyright.  
Limitation: This document has been prepared on behalf of, and for the exclusive use of Jacobs and AECOM client, and is subject to, and issued in accordance with, the provisions of the contract between Jacobs, AECOM and the client. Jacobs and AECOM accepts no liability or responsibility whatsoever for, or in respect of, any use of, or reliance upon, this document by any third party.

