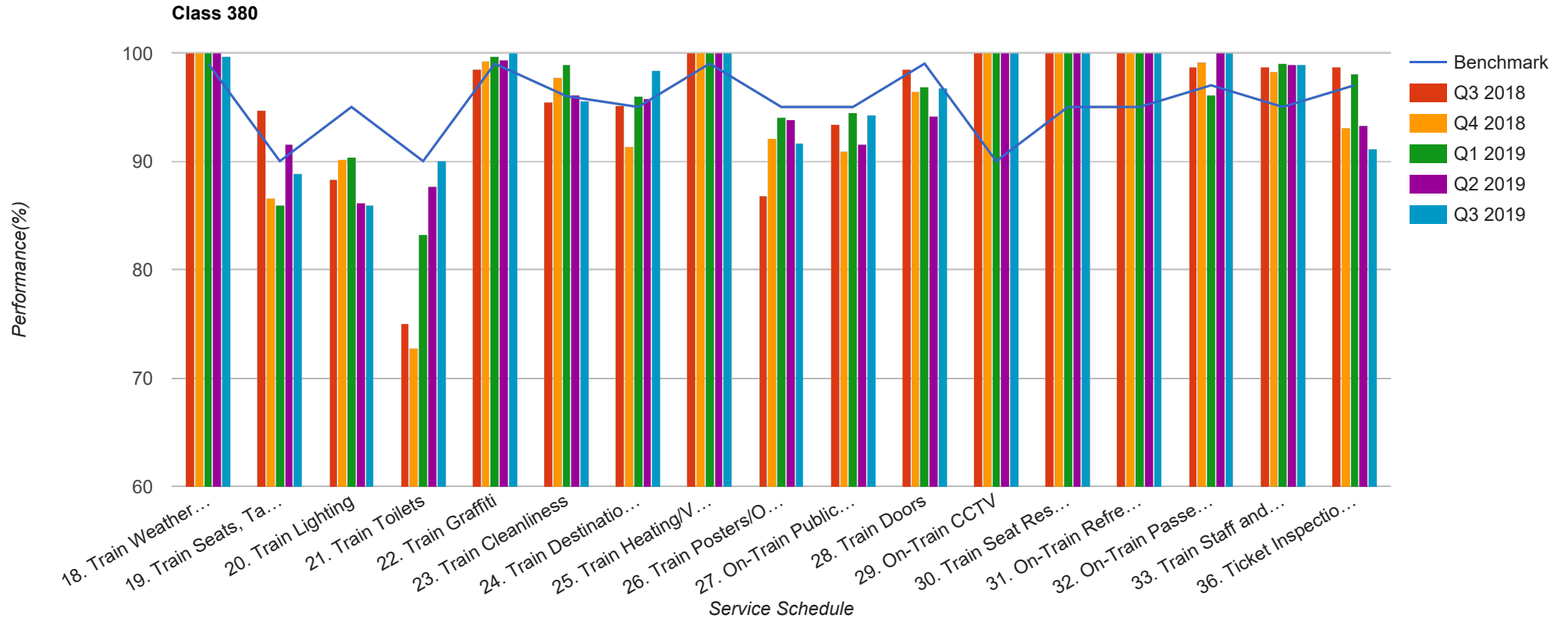


Quarter 3 2018 - Quarter 3 2019
Scotrail



Table

Service Schedule	Benchmark	Q3 2018	Q4 2018	Q1 2019	Q2 2019	Q3 2019
18. Train Weather and Wind Proofing	99	100	100	100	100	99.68
19. Train Seats, Tables, Racks and other Passenger Facilities	90	94.74	86.58	85.92	91.61	88.82
20. Train Lighting	95	88.35	90.13	90.4	86.13	85.94
21. Train Toilets	90	75	72.73	83.22	87.69	90.08
22. Train Graffiti	99	98.5	99.24	99.72	99.35	100
23. Train Cleanliness	96	95.49	97.72	98.87	96.13	95.53
24. Train Destination Boards and Passenger	95	95.11	91.39	96.05	95.81	98.4
25. Train Heating/Ventilation	99	100	100	100	100	100
26. Train Posters/On Train Information	95	86.84	92.15	94.07	93.87	91.69
27. On-Train Public Address	95	93.41	90.89	94.46	91.61	94.24
28. Train Doors	99	98.5	96.46	96.9	94.19	96.81
29. On-Train CCTV	90	100	100	100	100	100
30. Train Seat Reservation System	95	100	100	100	100	100
31. On-Train Refreshment and Food Facilities	95	100	100	100	100	100
32. On-Train Passenger Entertainment Systems and WiFi	97	98.7	99.13	96.12	100	100
33. Train Staff and Customer Care	95	98.7	98.26	99.03	98.89	98.89
36. Ticket Inspection on Trains	97	98.7	93.04	98.06	93.33	91.11