

**Legend**

- Route Option
- 500m Buffer

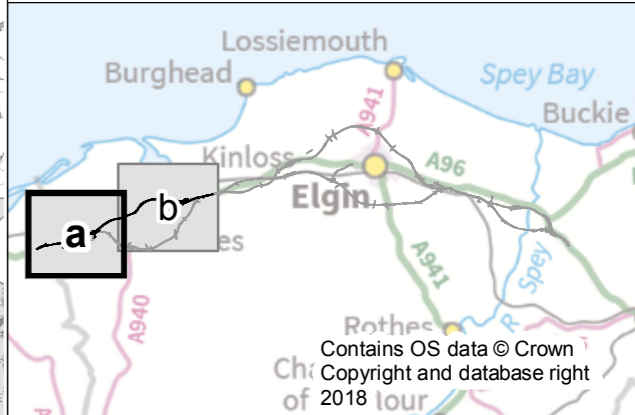
Moray Local Development Plan 2015 - Designated Sites

- Business Park
- Environmental
- Flood Alleviation
- Industrial
- Long Term Residential
- Opportunity
- Residential
- Amenity
- Tourism

Land-take Land-take from designated sites and planning applications

Note: Refer to Appendix 9.2 and 9.3 for details of sites

0 250 500 1,000 1,500 Metres



C01	27/11/2018	Approved as Stage Complete	JB	AM
Rev.	Rev. Date	Drawing Suitability	Drawn	Appr'd

**Mott MacDonald Sweco**



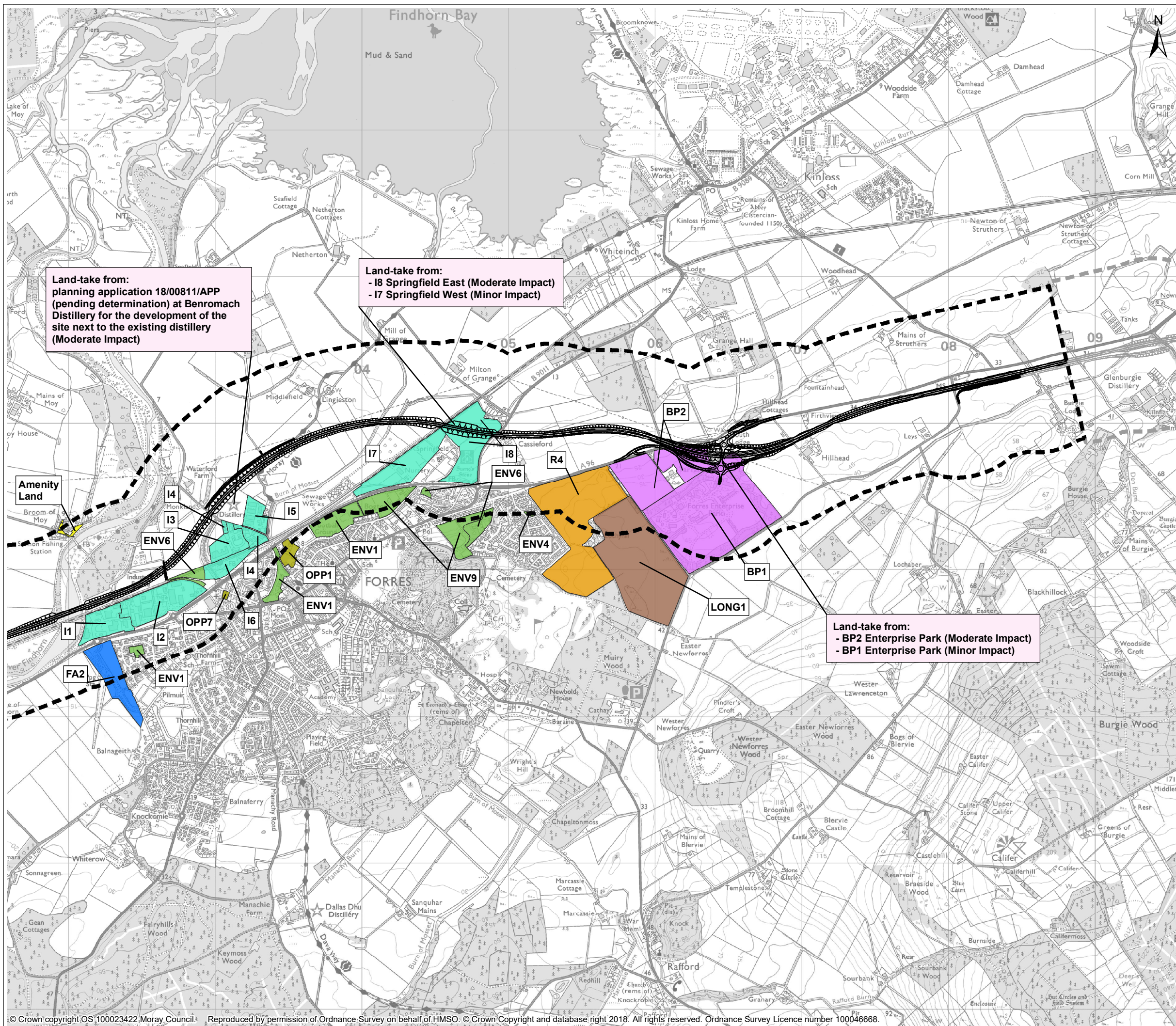
Project **A96 Dualling Hardmuir to Fochabers**

Drawing Title **Figure 9.1a Local Development Plan (LDP) Designated Sites and Planning Applications Hardmuir to Hillhead - North Option**

Scale @ A3	1:25,000	DO NOT SCALE
Project No.	117880	Status A2
BIM No.	A96PHF-MMS-EGN-00000-DR-GS-00015	

This drawing should not be relied on or used in circumstances other than those for which it was originally prepared and for which the Mott MacDonald Sweco (MMS) Joint Venture was commissioned. MMS accepts no responsibility for this drawing to any party other than the person by whom it was commissioned. Any party which breaches the provisions of this disclaimer shall indemnify MMS for all loss or damage arising therefrom.



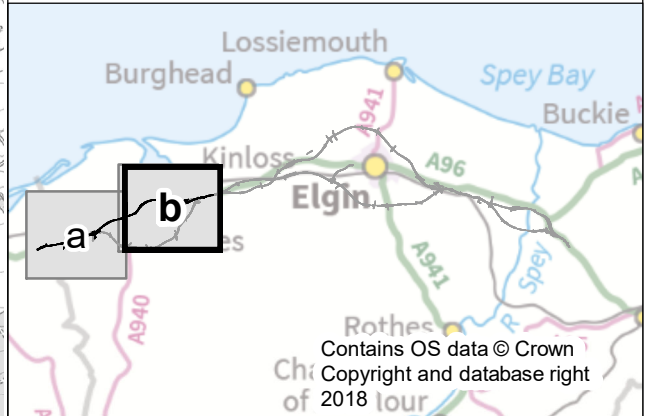


**Legend**

- Route Option
- ▭ 500m Buffer
- Moray Local Development Plan 2015 - Designated Sites
- Business Park
- Environmental
- Flood Alleviation
- Industrial
- Long Term Residential
- Opportunity
- Residential
- Amenity
- Tourism

**Land-take** Land-take from designated sites and planning applications

Note: Refer to Appendix 9.2 and 9.3 for details of sites



C01	27/11/2018	Approved as Stage Complete	JB	AM
Rev.	Rev. Date	Drawing Suitability	Drawn	Appr'd

**Mott MacDonald Sweco**



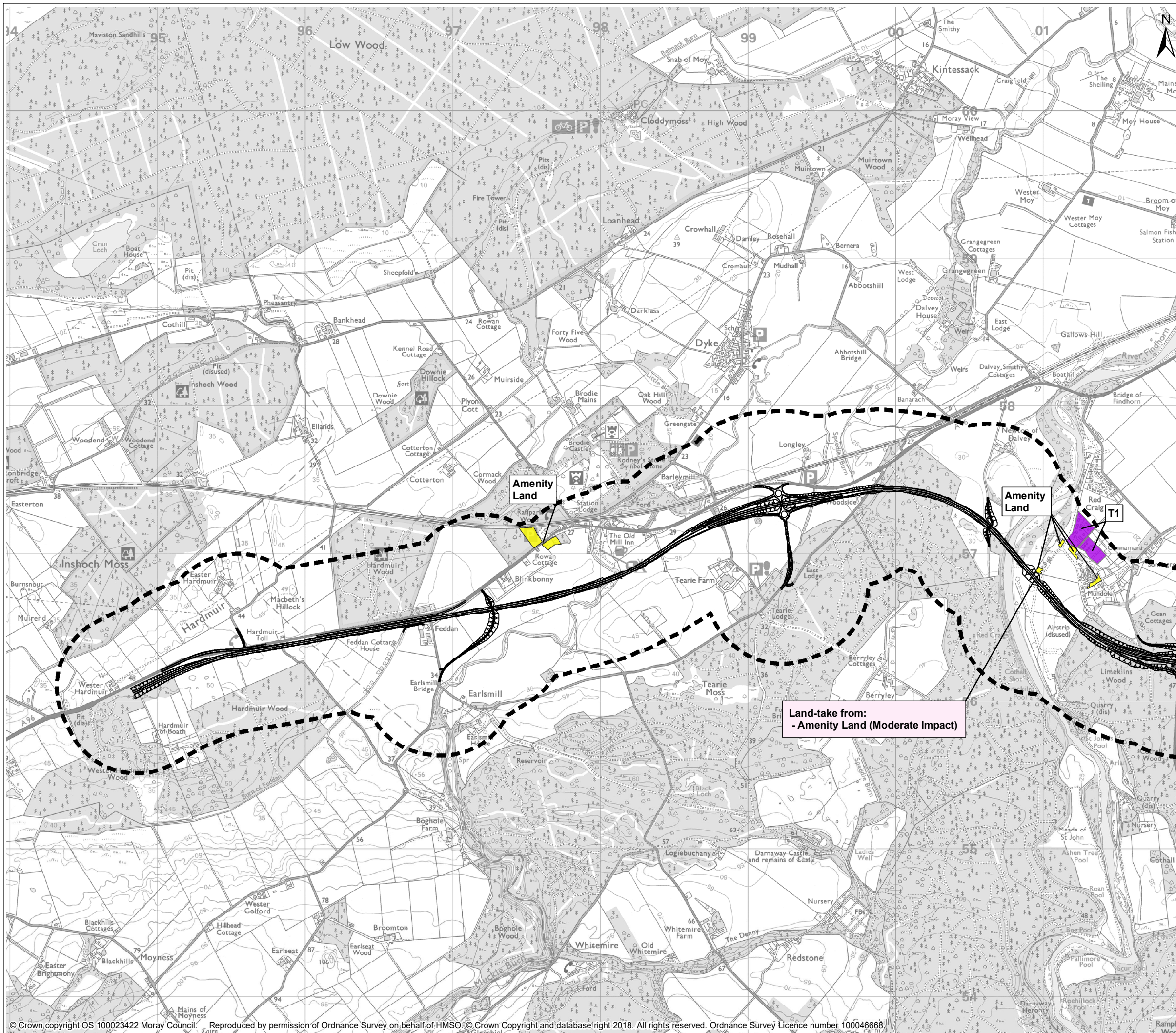
Project: **A96 Dualling Hardmuir to Fochabers**

Drawing Title: **Figure 9.1b Local Development Plan (LDP) Designated Sites and Planning Applications Hardmuir to Hillhead - North Option**

Scale @ A3	1:25,000	DO NOT SCALE
Project No.	117880	Status A2
BIM No.	A96PHF-MMS-EGN-0000-DR-GS-00015	

This drawing should not be relied on or used in circumstances other than those for which it was originally prepared and for which the Mott MacDonald Sweco (MMS) Joint Venture was commissioned. MMS accepts no responsibility for this drawing to any party other than the person by whom it was commissioned. Any party which breaches the provisions of this disclaimer shall indemnify MMS for all loss or damage arising therefrom.



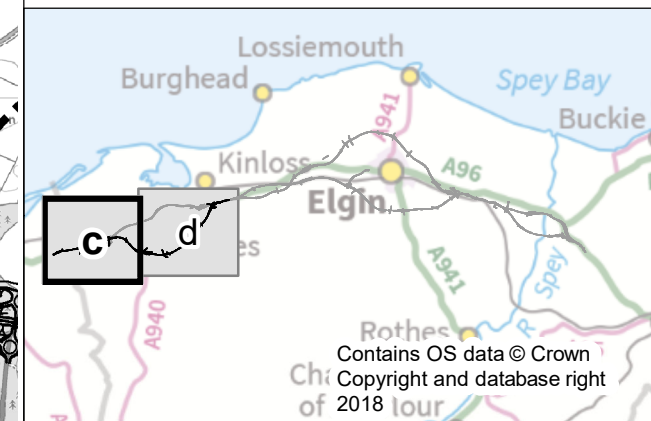


**Legend**

- Route Option
- 500m Buffer
- Moray Local Development Plan 2015 - Designated Sites**
- Business Park
- Environmental
- Flood Alleviation
- Industrial
- Long Term Residential
- Opportunity
- Residential
- Amenity
- Tourism

**Land-take** Land-take from designated sites and planning applications

Note: Refer to Appendix 9.2 and 9.3 for details of sites



C01	27/11/2018	Approved as Stage Complete	JB	AM
Rev.	Rev. Date	Drawing Suitability	Drawn	Appr'd

**Mott MacDonald  
Sweco**



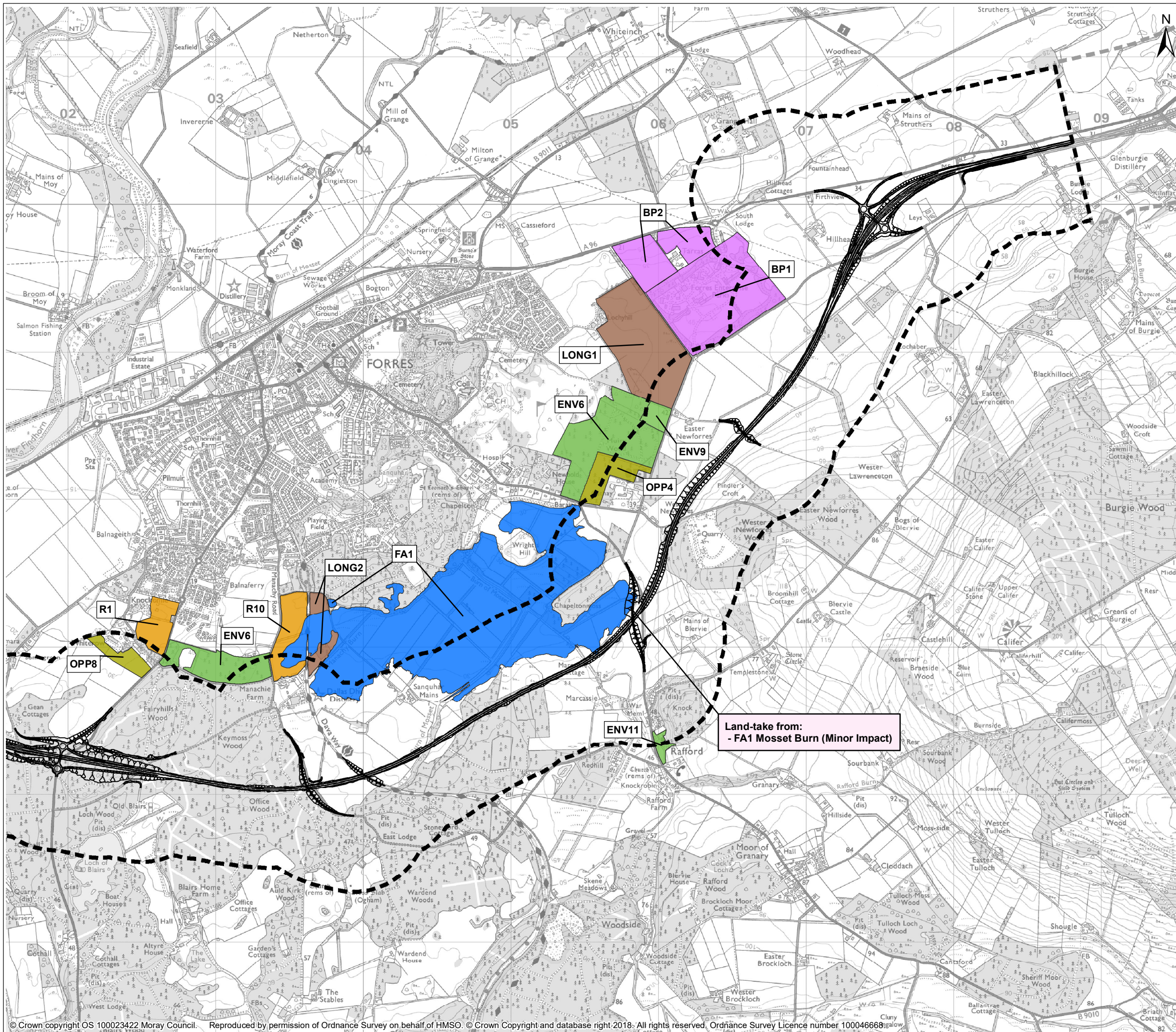
Project  
**A96 Dualling  
Hardmuir to Fochabers**

Drawing Title  
**Figure 9.1c Local Development Plan (LDP)  
Designated Sites and Planning Applications  
Hardmuir to Sitehead - South Option**

Scale @ A3	1:25,000	DO NOT SCALE
Project No.	117880	Status A2
BIM No.	A96PHF-MMS-EGN-0000-DR-GS-00015	

This drawing should not be relied on or used in circumstances other than those for which it was originally prepared and for which the Mott MacDonald Sweco (MMS) Joint Venture was commissioned. MMS accepts no responsibility for this drawing to any party other than the person by whom it was commissioned. Any party which breaches the provisions of this disclaimer shall indemnify MMS for all loss or damage arising therefrom.





**Legend**

- Route Option
- 500m Buffer

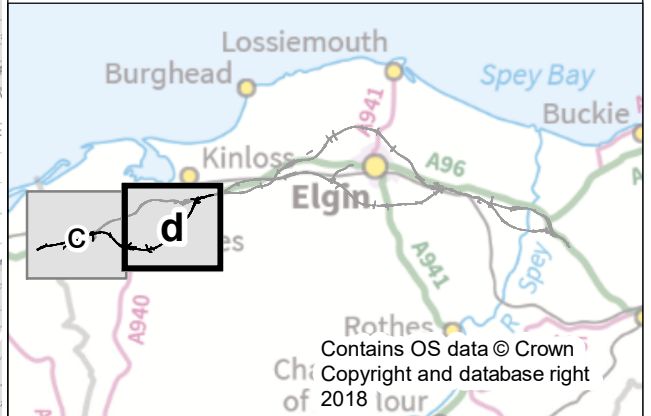
**Moray Local Development Plan 2015 - Designated Sites**

- Business Park
- Environmental
- Flood Alleviation
- Industrial
- Long Term Residential
- Opportunity
- Residential
- Amenity
- Tourism

**Land-take** Land-take from designated sites and planning applications

Note: Refer to Appendix 9.2 and 9.3 for details of sites

0 250 500 1,000 1,500 Metres



C01	27/11/2018	Approved as Stage Complete	JB	AM
Rev.	Rev. Date	Drawing Suitability	Drawn	Appr'd

**Mott MacDonald Sweco**



Project **A96 Dualling  
Hardmuir to Fochabers**

Drawing Title **Figure 9.1d Local Development Plan (LDP)  
Designated Sites and Planning Applications  
Hardmuir to Hillhead - South Option**

Scale @ A3	1:25,000	DO NOT SCALE
Project No.	117880	Status A2
BIM No.	A96PHF-MMS-EGN-00000-DR-GS-00015	

This drawing should not be relied on or used in circumstances other than those for which it was originally prepared and for which the Mott MacDonald Sweco (MMS) Joint Venture was commissioned. MMS accepts no responsibility for this drawing to any party other than the person by whom it was commissioned. Any party which breaches the provisions of this disclaimer shall indemnify MMS for all loss or damage arising therefrom.