

Proposed Scheme

**CNPA Priority Locations**

- A Aspen - Amber
- A Aspen - Red
- B Botanical - Amber
- B Botanical - Red
- F Fungi - Amber
- F Fungi - Red
- H Hymenoptera - Red
- IF Invertebrates, Fungi - Amber
- IA Invertebrates, Amphibians - Red
- IF Invertebrates, Fungi - Red
- I Invertebrates - Amber
- I Invertebrates - Red
- Le Lepidoptera - Amber
- Le Lepidoptera - Red
- L Lichen - Amber
- L Lichen - Red
- M Mosses - Amber

1 CNPA Record Number

Kilometres  
0 0.1 0.2

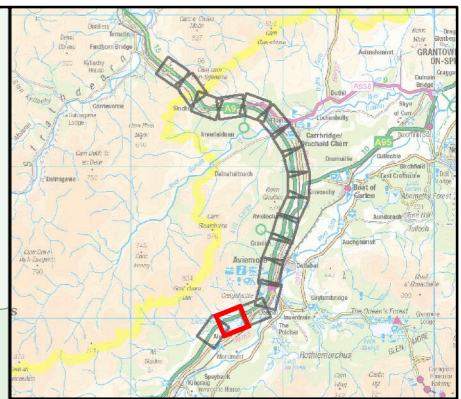
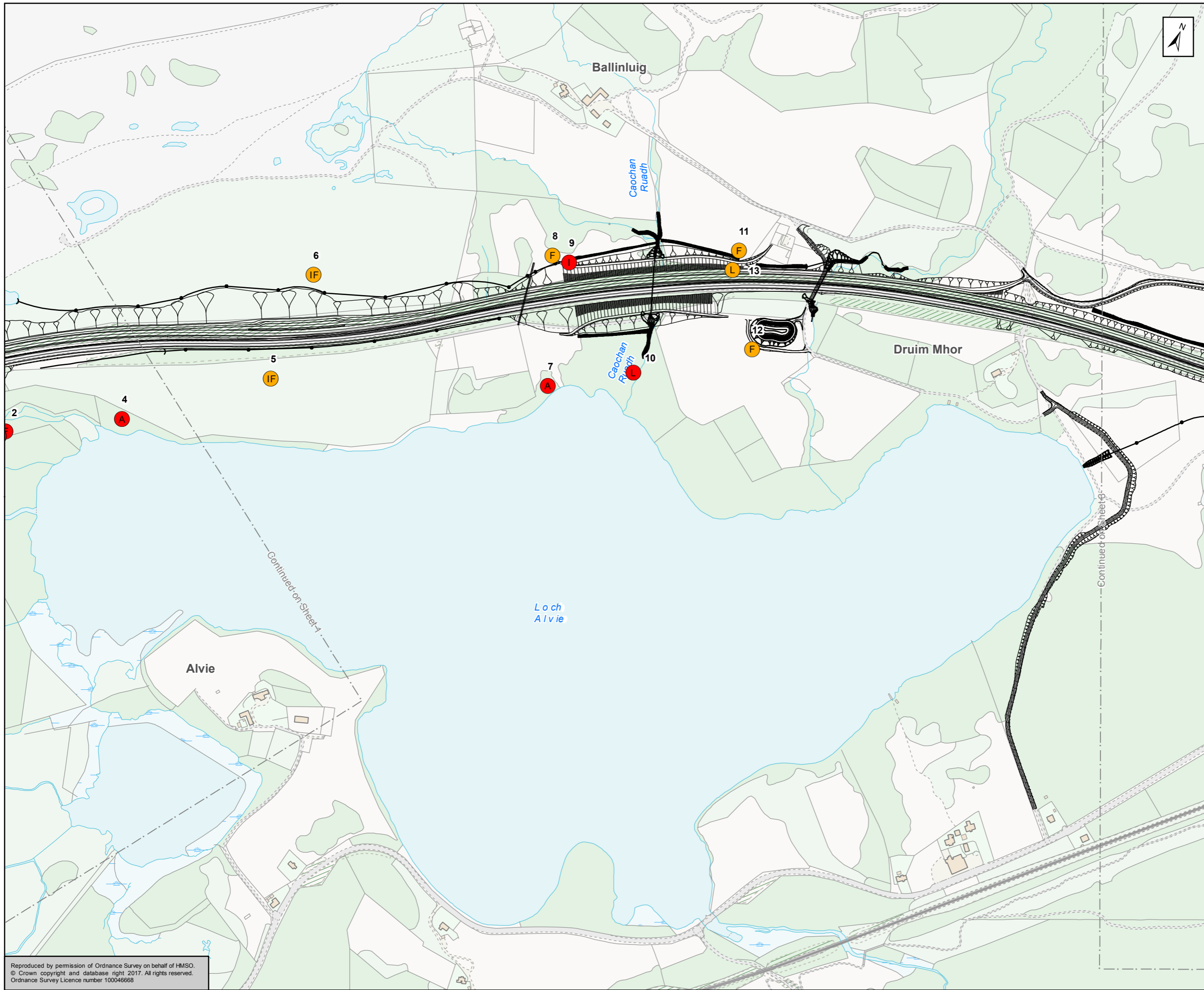
Status	Subsidiary
FINAL	B



Figure 12.9  
CNPA Priority  
Species Locations  
Sheet 1 of 17

Scale	Drawn	Checked	Approved	Authorised
1:5,000	RM	SK	ROB	SB
Document Number	Project	Originator	Volume	Revision
A9P11-AMJ-EBD-H_ZZZZZ_XX-DR-GI-0122				P04
Location	Type	Role	Number	

Reproduced by permission of Ordnance Survey on behalf of HMSO.  
© Crown copyright and database right 2017. All rights reserved.  
Ordnance Survey Licence number 100046668



Proposed Scheme

**CNPA Priority Locations**

- A Aspen - Amber
- A Aspen - Red
- B Botanical - Amber
- B Botanical - Red
- F Fungi - Amber
- F Fungi - Red
- H Hymenoptera - Red
- IF Invertebrates, Fungi - Amber
- IA Invertebrates, Amphibians - Red
- IF Invertebrates, Fungi - Red
- I Invertebrates - Amber
- I Invertebrates - Red
- Le Lepidoptera - Amber
- Le Lepidoptera - Red
- L Lichen - Amber
- L Lichen - Red
- M Mosses - Amber

1 CNPA Record Number

Kilometres  
0 0.1 0.2

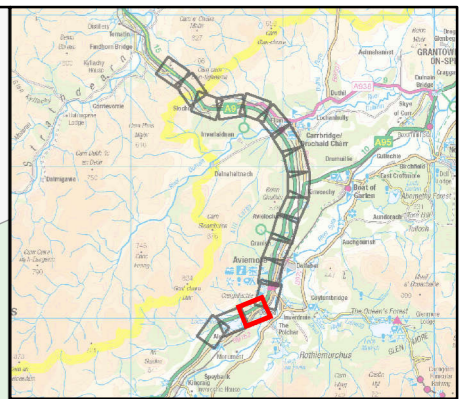
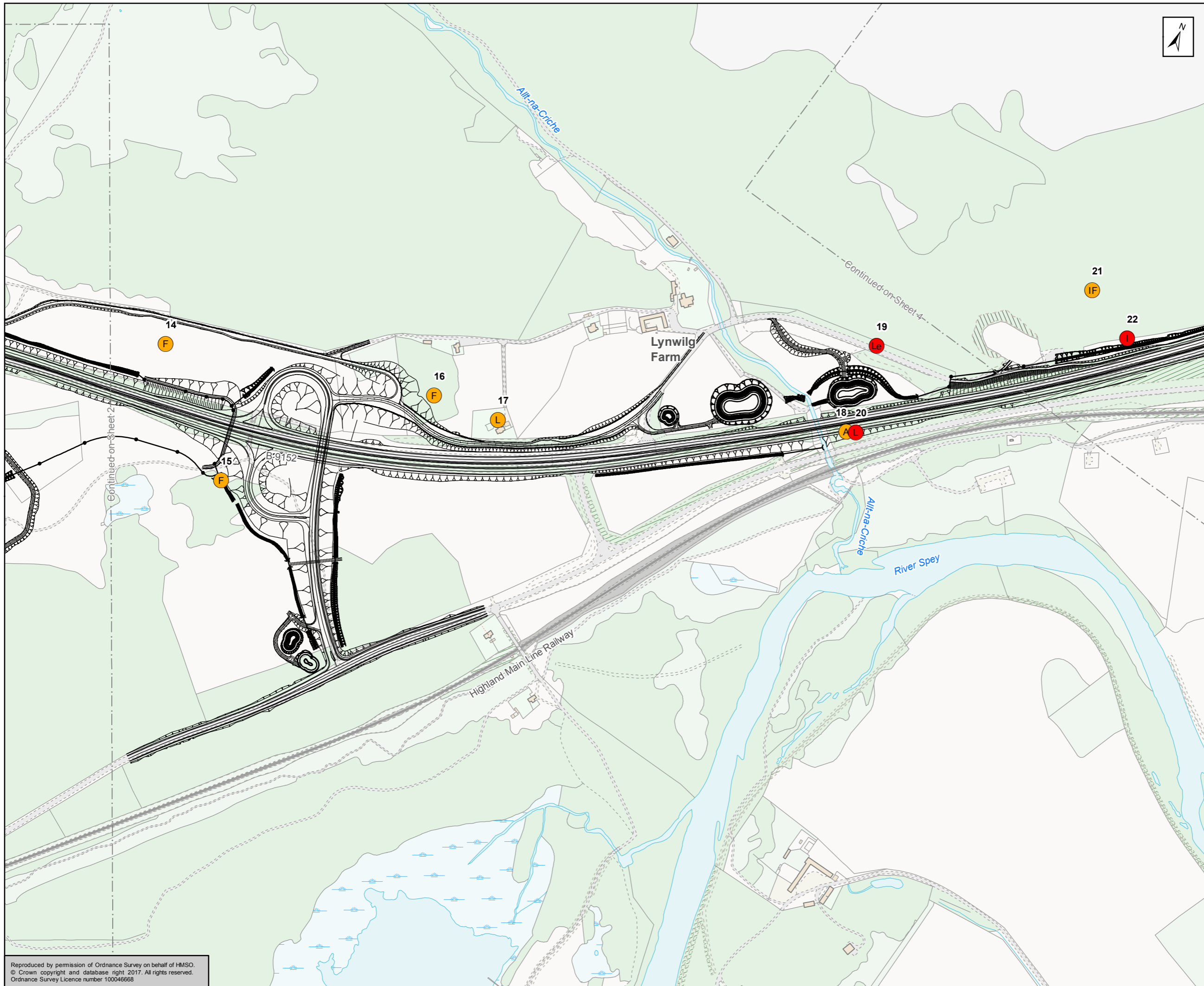
Status	FINAL	Suitability	B
--------	-------	-------------	---



Figure 12.9  
CNPA Priority  
Species Locations  
Sheet 2 of 17

Scale	1:5,000	Drawn	RM	Checked	SK	Approved	ROB	Authorised	SB
Document Number	A9P11-AMJ-EBD-H_ZZZZ_XX-DR-GI-0123							Revision	P04
Project	Originator	Volume							
Location	Type	Role	Number						

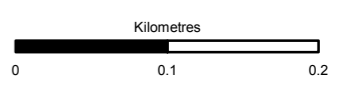
Reproduced by permission of Ordnance Survey on behalf of HMSO.  
© Crown copyright and database right 2017. All rights reserved.  
Ordnance Survey Licence number 100046668



Proposed Scheme

**CNPA Priority Locations**

- A Aspen - Amber
  - A Aspen - Red
  - B Botanical - Amber
  - B Botanical - Red
  - F Fungi - Amber
  - F Fungi - Red
  - H Hymenoptera - Red
  - IF Invertebrates, Fungi - Amber
  - IA Amphibians - Red
  - IF Invertebrates, Fungi - Red
  - I Invertebrates - Amber
  - I Invertebrates - Red
  - Le Lepidoptera - Amber
  - Le Lepidoptera - Red
  - L Lichen - Amber
  - L Lichen - Red
  - M Mosses - Amber
- 1 CNPA Record Number



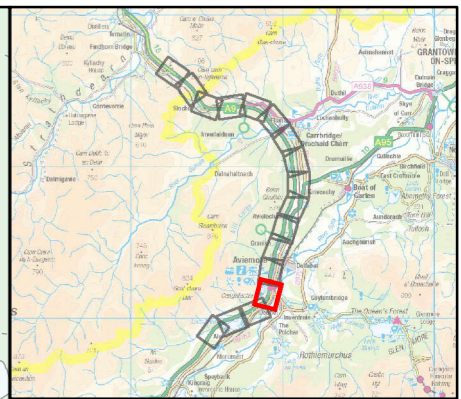
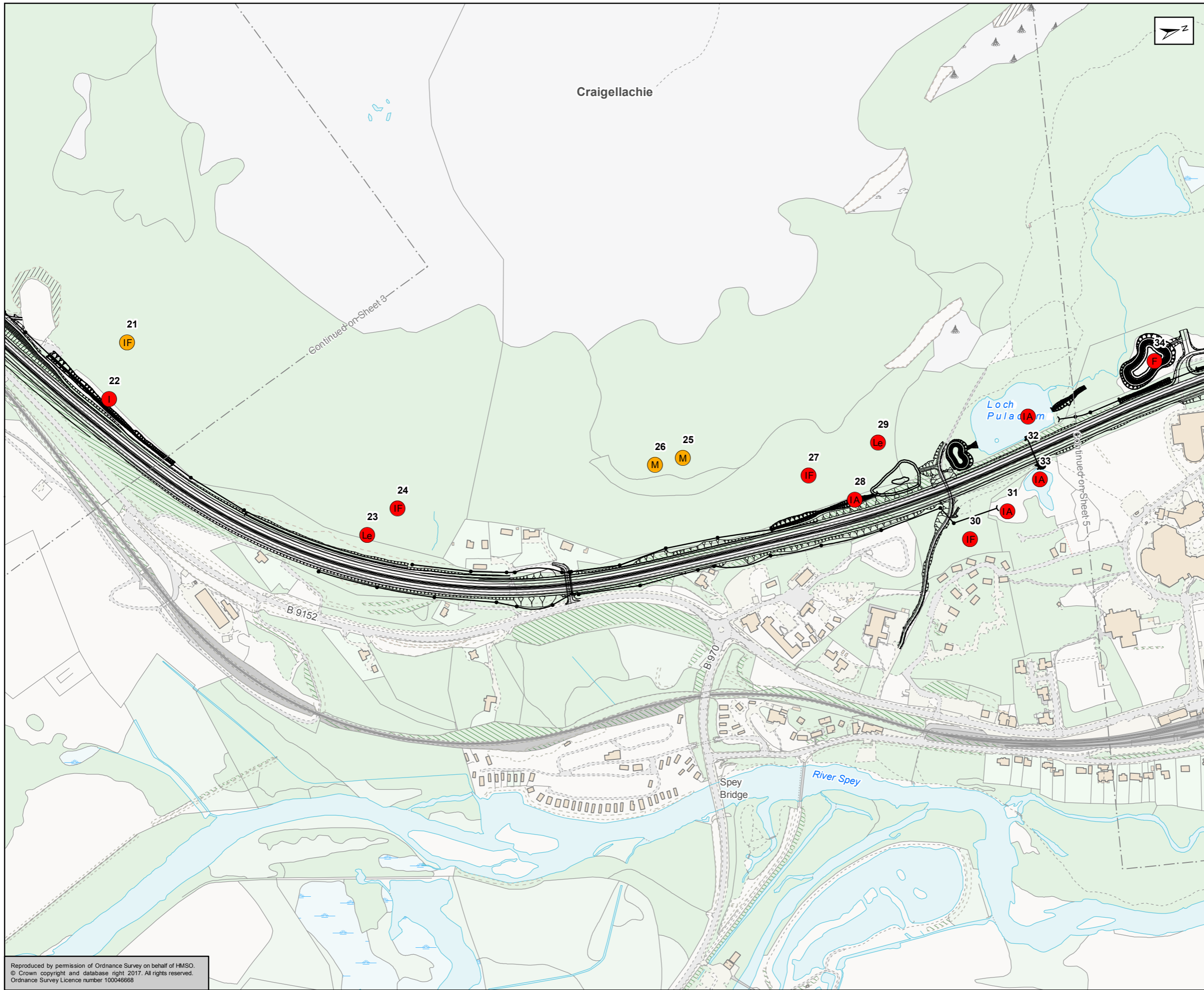
Status	FINAL	Subsidiary	B
--------	-------	------------	---



Figure 12.9  
CNPA Priority  
Species Locations  
Sheet 3 of 17

Scale	1:5,000	Drawn	RM	Checked	SK	Approved	ROB	Authorised	SB
Document Number	A9P11-AMJ-EBD-H_ZZZZZ_XX-DR-GI-0124							Revision	P04
Project	Originator	Volume							
Location	Type	Role	Number						

Reproduced by permission of Ordnance Survey on behalf of HMSO.  
© Crown copyright and database right 2017. All rights reserved.  
Ordnance Survey Licence number 100046668



Proposed Scheme

**CNPA Priority Locations**

- A Aspen - Amber
- A Aspen - Red
- B Botanical - Amber
- B Botanical - Red
- F Fungi - Amber
- F Fungi - Red
- H Hymenoptera - Red
- IF Invertebrates, Fungi - Amber
- IA Invertebrates, Amphibians - Red
- IF Invertebrates, Fungi - Red
- I Invertebrates - Amber
- I Invertebrates - Red
- Le Lepidoptera - Amber
- Le Lepidoptera - Red
- L Lichen - Amber
- L Lichen - Red
- M Mosses - Amber

1 CNPA Record Number

Kilometres  
0 0.1 0.2

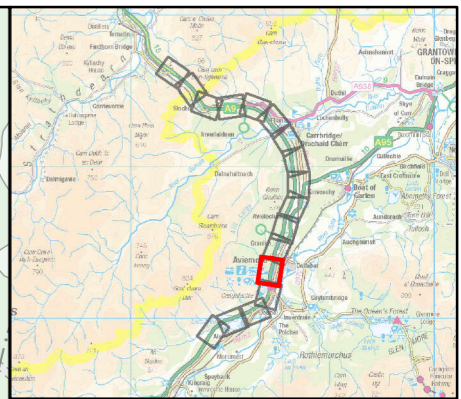
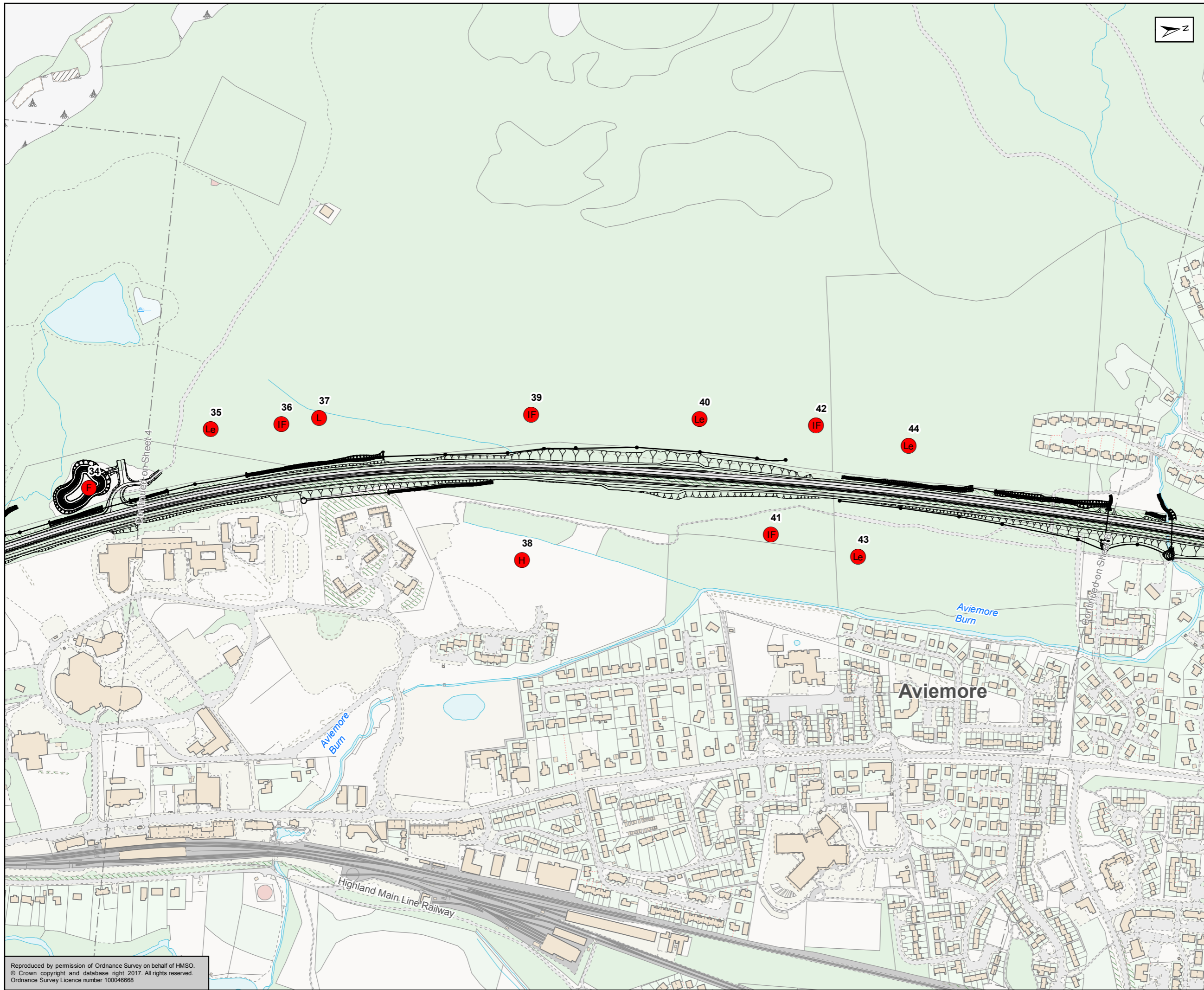
Status	FINAL	Subsidiary	B
--------	-------	------------	---



Figure 12.9  
CNPA Priority  
Species Locations  
Sheet 4 of 17

Scale	1:5,000	Drawn	RM	Checked	SK	Approved	ROB	Authorised	SB
Document Number	A9P11-AMJ-EBD-H_ZZZZ_XX-DR-GI-0125							Revision	P04
Project	Originator	Volume							
Location	Type	Role	Number						

Reproduced by permission of Ordnance Survey on behalf of HMSO.  
© Crown copyright and database right 2017. All rights reserved.  
Ordnance Survey Licence number 100046668



Proposed Scheme

**CNPA Priority Locations**

- A Aspen - Amber
- A Aspen - Red
- B Botanical - Amber
- B Botanical - Red
- F Fungi - Amber
- F Fungi - Red
- H Hymenoptera - Red
- IF Invertebrates, Fungi - Amber
- IA Invertebrates, Amphibians - Red
- IF Invertebrates, Fungi - Red
- I Invertebrates - Amber
- I Invertebrates - Red
- Le Lepidoptera - Amber
- Le Lepidoptera - Red
- L Lichen - Amber
- L Lichen - Red
- M Mosses - Amber

1 CNPA Record Number

Kilometres  
0 0.1 0.2

Status: FINAL Subtitle: B

Client: **TRANSPORT SCOTLAND**  
COMHDHAIL ALBA

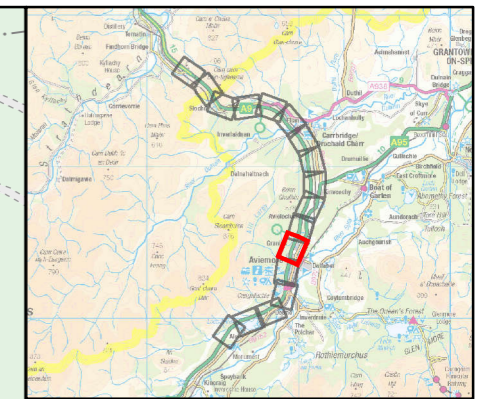
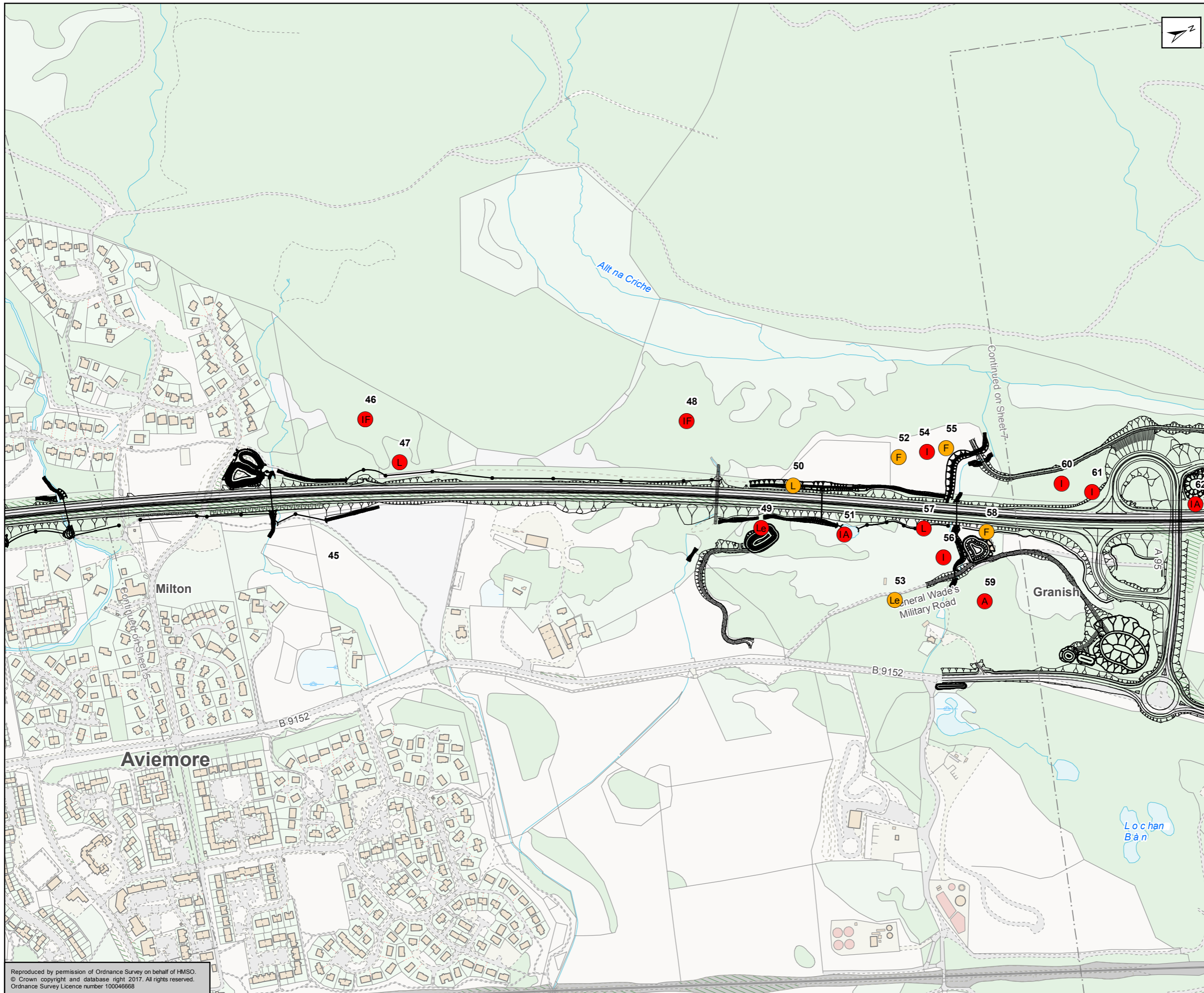


ATKINS mouchel

Figure 12.9  
CNPA Priority  
Species Locations  
Sheet 5 of 17

Scale	1:5,000	Drawn	RM	Checked	SK	Approved	ROB	Authorised	SB
Document Number	A9P11-AMJ-EBD-H_ZZZZ_XX-DR-GI-0126							Revision	P04
Project	Originator	Volume							
Location	Type	Role	Number						

Reproduced by permission of Ordnance Survey on behalf of HMSO.  
© Crown copyright and database right 2017. All rights reserved.  
Ordnance Survey Licence number 100046668



Proposed Scheme

**CNPA Priority Locations**

- A Aspen - Amber
- A Aspen - Red
- B Botanical - Amber
- B Botanical - Red
- F Fungi - Amber
- F Fungi - Red
- H Hymenoptera - Red
- IF Invertebrates, Fungi - Amber
- IA Invertebrates, Amphibians - Red
- IF Invertebrates, Fungi - Red
- I Invertebrates - Amber
- I Invertebrates - Red
- Le Lepidoptera - Amber
- Le Lepidoptera - Red
- L Lichen - Amber
- L Lichen - Red
- M Mosses - Amber

1 CNPA Record Number

Kilometres  
0 0.1 0.2

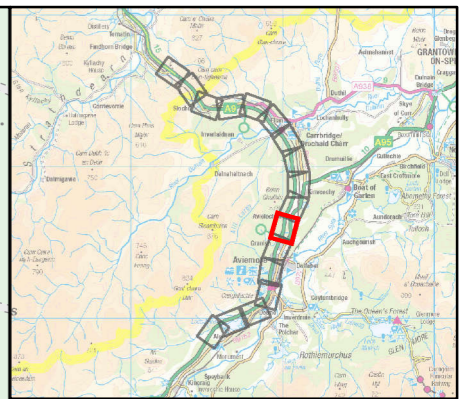
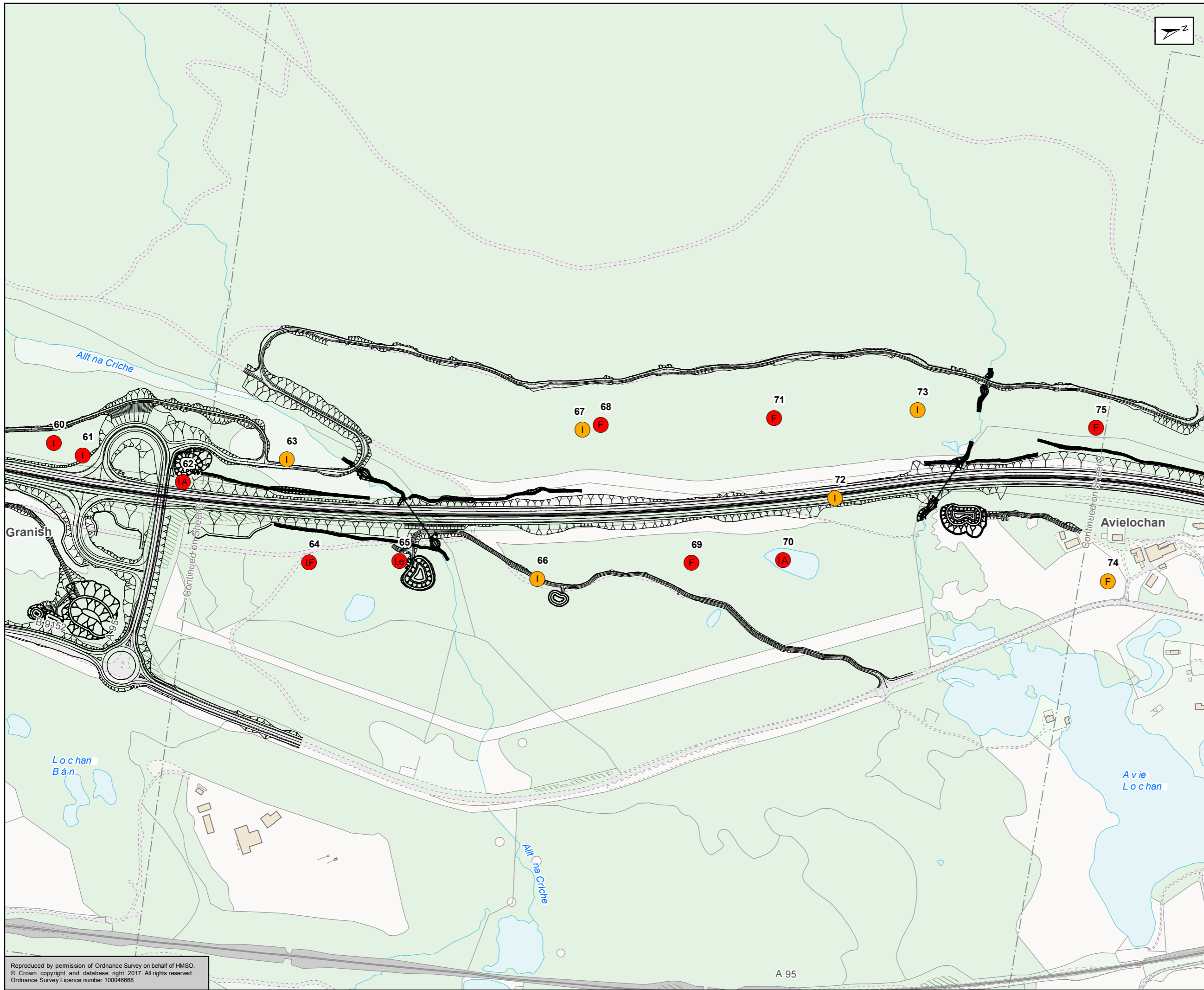
Status	FINAL	Subsidiary	B
--------	-------	------------	---



Figure 12.9  
CNPA Priority Species Locations  
Sheet 6 of 17

Scale	1:5,000	Drawn	RM	Checked	SK	Approved	ROB	Authorised	SB
Document Number	A9P11-AMJ-EBD-H_ZZZZZ_XX-DR-GI-0127							Revision	P04
Project	Originator	Volume	Location	Type	Role	Number			

Reproduced by permission of Ordnance Survey on behalf of HMSO.  
© Crown copyright and database right 2017. All rights reserved.  
Ordnance Survey Licence number 100046668



Proposed Scheme

**CNPA Priority Locations**

- A Aspen - Amber
- A Aspen - Red
- B Botanical - Amber
- B Botanical - Red
- F Fungi - Amber
- F Fungi - Red
- H Hymenoptera - Red
- IF Invertebrates, Fungi - Amber
- IA Amphibians - Red
- IF Invertebrates, Fungi - Red
- I Invertebrates - Amber
- I Invertebrates - Red
- Le Lepidoptera - Amber
- Le Lepidoptera - Red
- L Lichen - Amber
- L Lichen - Red
- M Mosses - Amber

1 CNPA Record Number

Kilometres  
0 0.1 0.2

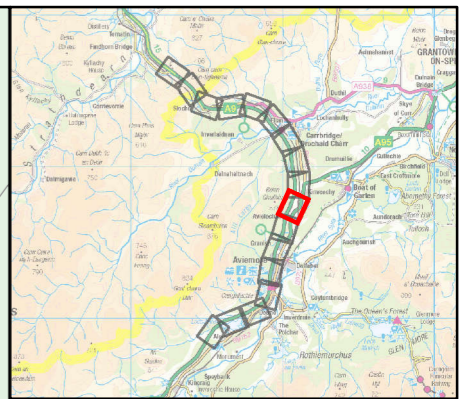
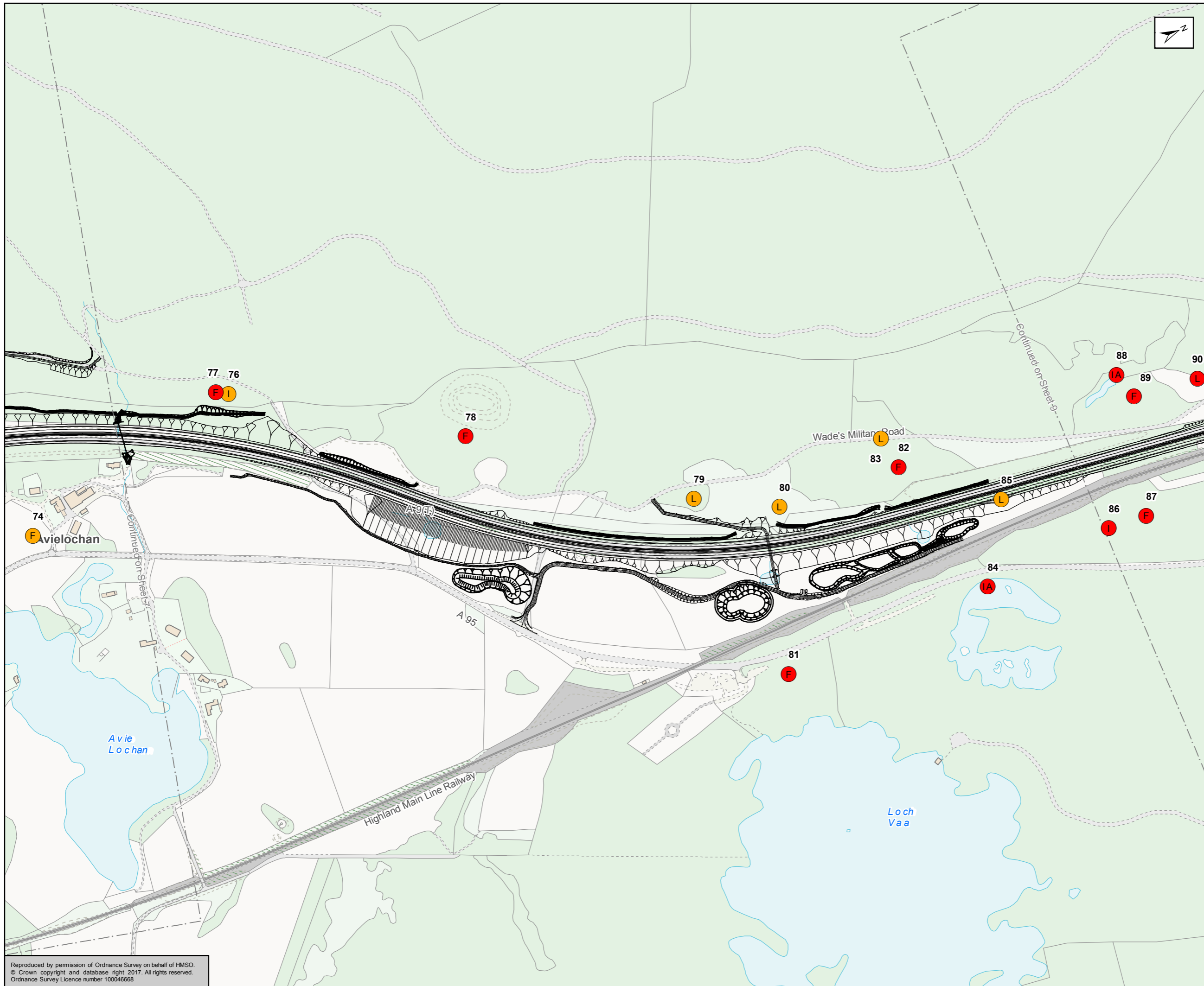
Status	FINAL	Suitability	B
--------	-------	-------------	---



Figure 12.9  
CNPA Priority  
Species Locations  
Sheet 7 of 17

Scale	1:5,000	Drawn	RM	Checked	SK	Approved	ROB	Authorised	SB
Document Number	A9P11-AMJ-EBD-H_ZZZZZ_XX-DR-GI-0128							Revision	P04
Project	Originator	Volume							
Location	Type	Role	Number						

Reproduced by permission of Ordnance Survey on behalf of HMSO.  
© Crown copyright and database right 2017. All rights reserved.  
Ordnance Survey Licence number 100046668



Proposed Scheme

**CNPA Priority Locations**

- A Aspen - Amber
- A Aspen - Red
- B Botanical - Amber
- B Botanical - Red
- F Fungi - Amber
- F Fungi - Red
- H Hymenoptera - Red
- IF Invertebrates, Fungi - Amber
- IA Invertebrates, Amphibians - Red
- IF Invertebrates, Fungi - Red
- I Invertebrates - Amber
- I Invertebrates - Red
- Le Lepidoptera - Amber
- Le Lepidoptera - Red
- L Lichen - Amber
- L Lichen - Red
- M Mosses - Amber

1 CNPA Record Number

Kilometres  
0 0.1 0.2

Status	FINAL	Suitability	B
--------	-------	-------------	---

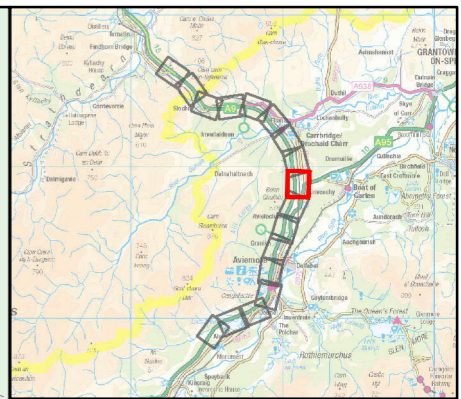
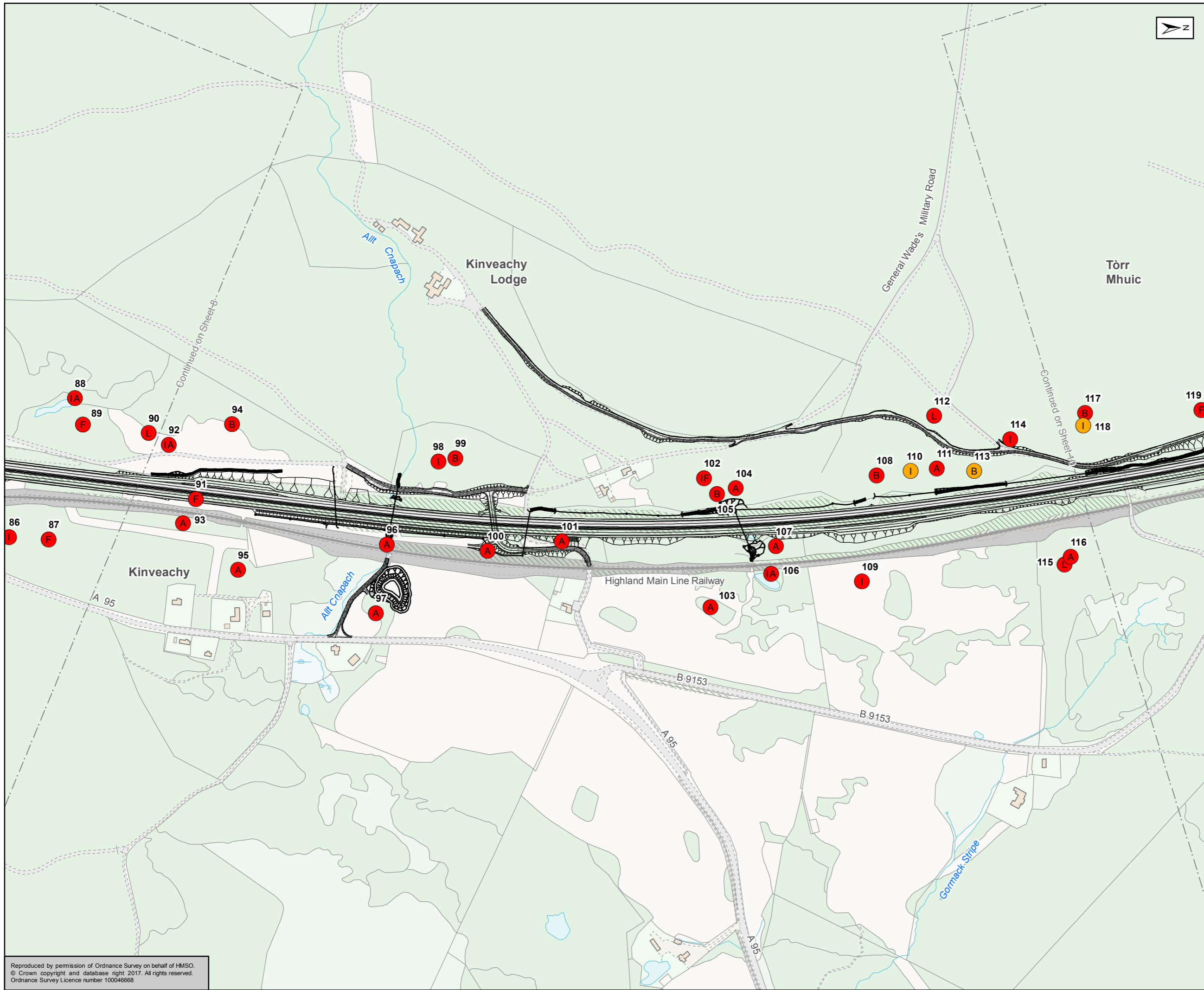


Figure 12.9  
CNPA Priority  
Species Locations  
Sheet 8 of 17

Scale	1:5,000	Drawn	RM	Checked	SK	Approved	ROB	Authorised	SB
Document Number	A9P11-AMJ-EBD-H_ZZZZZ_XX-DR-GI-0129							Revision	P04
Project	Originator	Volume							
Location	Type	Role	Number						

Reproduced by permission of Ordnance Survey on behalf of HMSO.  
© Crown copyright and database right 2017. All rights reserved.  
Ordnance Survey Licence number 100046668





Proposed Scheme

**CNPA Priority Locations**

- A Aspen - Amber
- A Aspen - Red
- B Botanical - Amber
- B Botanical - Red
- F Fungi - Amber
- F Fungi - Red
- H Hymenoptera - Red
- IF Invertebrates, Fungi - Amber
- IA Invertebrates, Amphibians - Red
- IF Invertebrates, Fungi - Red
- I Invertebrates - Amber
- I Invertebrates - Red
- Le Lepidoptera - Amber
- Le Lepidoptera - Red
- L Lichen - Amber
- L Lichen - Red
- M Mosses - Amber

1 CNPA Record Number

Kilometres  
0 0.1 0.2

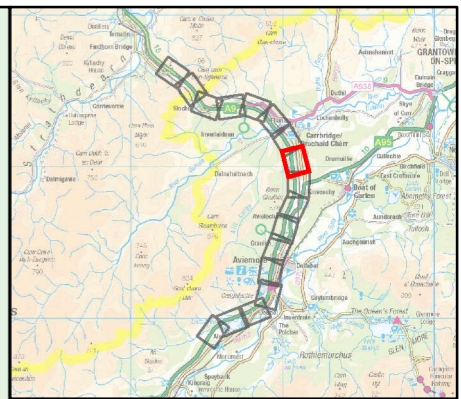
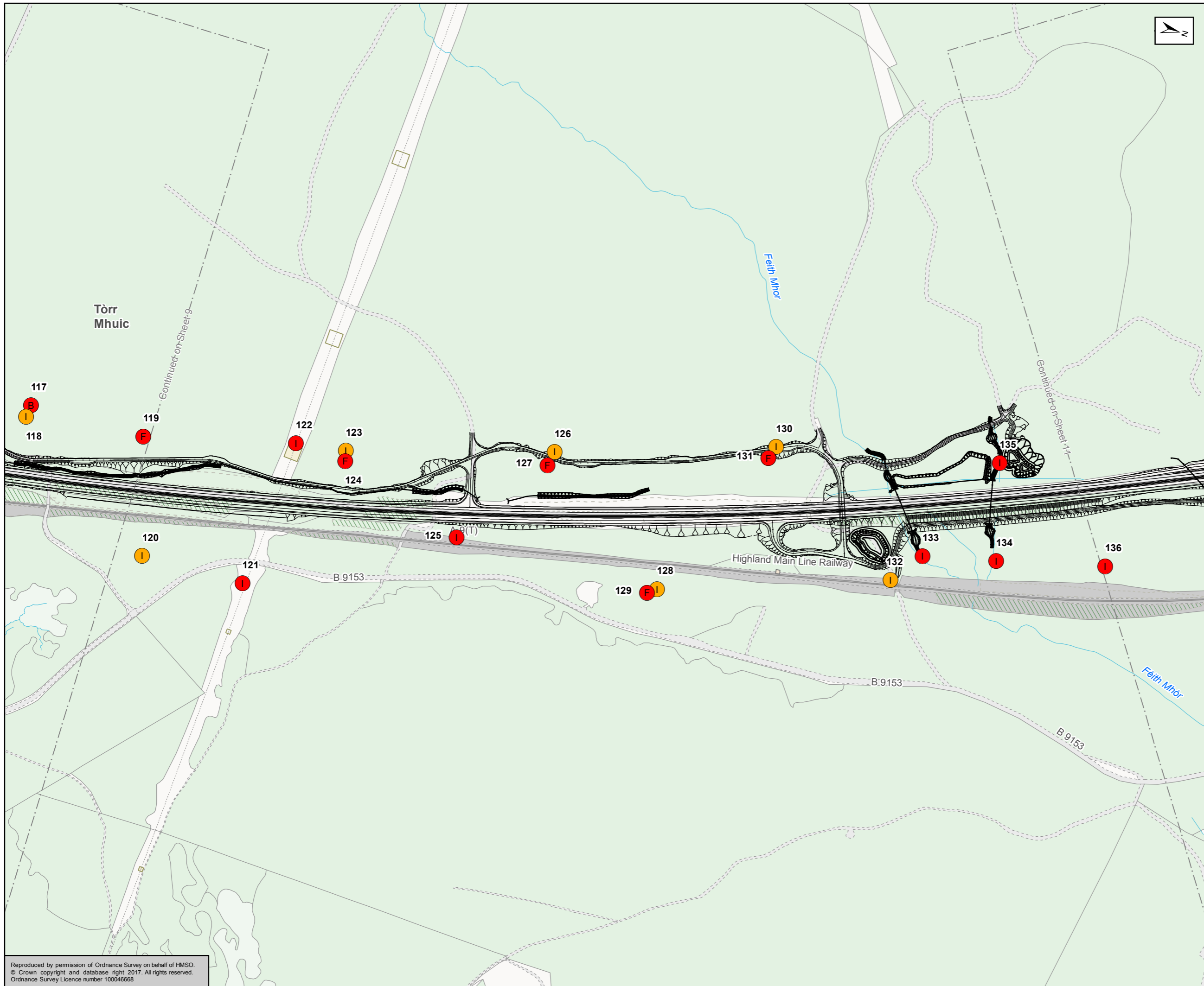
Status	FINAL	Subsidiary	B
--------	-------	------------	---



Figure 12.9  
CNPA Priority  
Species Locations  
Sheet 9 of 17

Scale	1:5,000	Drawn	RM	Checked	SK	Approved	ROB	Authorised	SB
Document Number	A9P11-AMJ-EBD-H_ZZZZ_XX-DR-GI-0130							Revision	P04
Project	Originator	Volume							
Location	Type	Role	Number						

Reproduced by permission of Ordnance Survey on behalf of HMSO.  
© Crown copyright and database right 2017. All rights reserved.  
Ordnance Survey Licence number 100046668



Proposed Scheme

**CNPA Priority Locations**

- (A) Aspen - Amber
- (A) Aspen - Red
- (B) Botanical - Amber
- (B) Botanical - Red
- (F) Fungi - Amber
- (F) Fungi - Red
- (H) Hymenoptera - Red
- (IF) Invertebrates, Fungi - Amber
- (IA) Invertebrates, Amphibians - Red
- (IF) Invertebrates, Fungi - Red
- (I) Invertebrates - Amber
- (I) Invertebrates - Red
- (Le) Lepidoptera - Amber
- (Le) Lepidoptera - Red
- (L) Lichen - Amber
- (L) Lichen - Red
- (M) Mosses - Amber

1 CNPA Record Number

Kilometres  
0 0.1 0.2

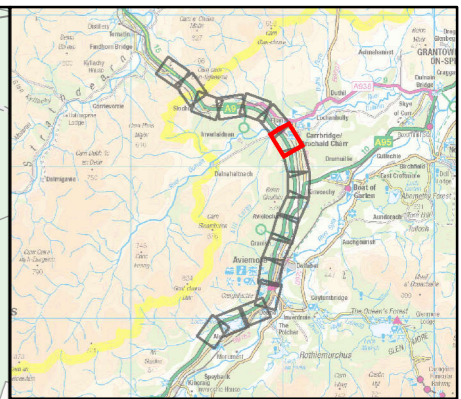
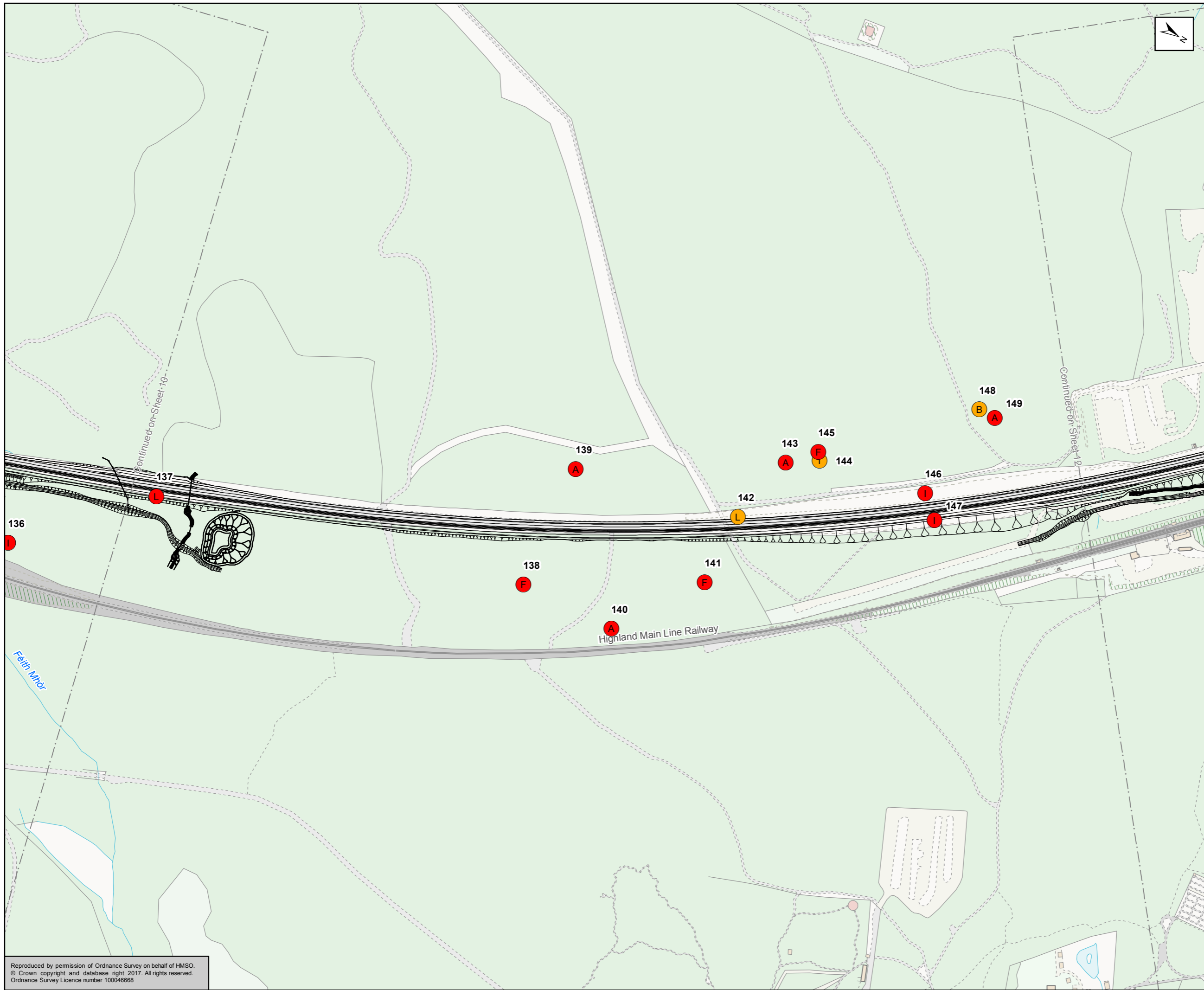
Status	FINAL	Suitability	B
--------	-------	-------------	---



Figure 12.9  
CNPA Priority  
Species Locations  
Sheet 10 of 17

Scale	1:5,000	Drawn	RM	Checked	SK	Approved	ROB	Authorised	SB
Document Number	A9P11-AMJ-EBD-H_ZZZZZ_XX-DR-GI-0131							Revision	P04
Project	Originator	Volume	Location	Type	Role	Number			

Reproduced by permission of Ordnance Survey on behalf of HMSO.  
© Crown copyright and database right 2017. All rights reserved.  
Ordnance Survey Licence number 100046668



Proposed Scheme

**CNPA Priority Locations**

- A Aspen - Amber
- A Aspen - Red
- B Botanical - Amber
- B Botanical - Red
- F Fungi - Amber
- F Fungi - Red
- H Hymenoptera - Red
- IF Invertebrates, Fungi - Amber
- IA Invertebrates, Amphibians - Red
- IF Invertebrates, Fungi - Red
- I Invertebrates - Amber
- I Invertebrates - Red
- Le Lepidoptera - Amber
- Le Lepidoptera - Red
- L Lichen - Amber
- L Lichen - Red
- M Mosses - Amber

1 CNPA Record Number

Kilometres  
0 0.1 0.2

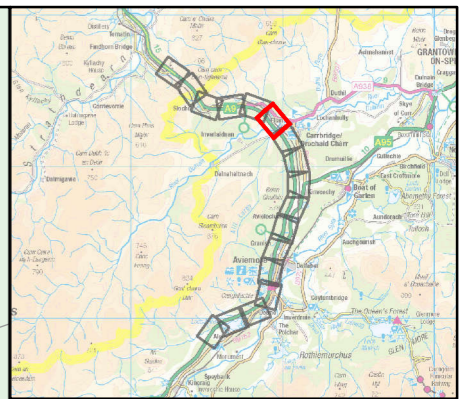
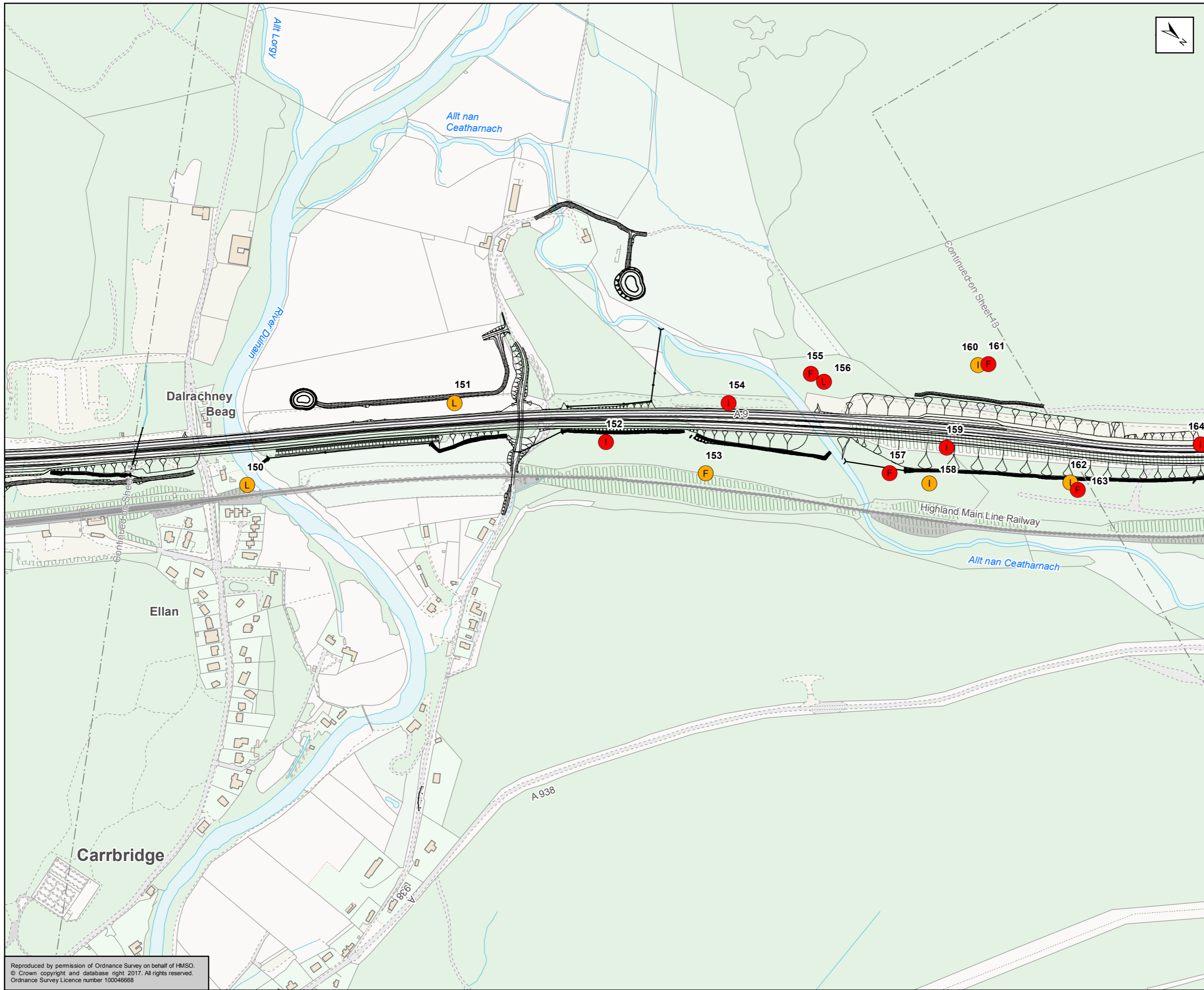
Status	FINAL	Subsidiary	B
--------	-------	------------	---



Figure 12.9  
CNPA Priority  
Species Locations  
Sheet 11 of 17

Scale	1:5,000	Drawn	RM	Checked	SK	Approved	ROB	Authorised	SB
Document Number	A9P11-AMJ-EBD-H_ZZZZ_XX-DR-GI-0132							Revision	P04
Project	Originator	Volume							
Location	Type	Role	Number						

Reproduced by permission of Ordnance Survey on behalf of HMSO.  
© Crown copyright and database right 2017. All rights reserved.  
Ordnance Survey Licence number 100046668



Proposed Scheme

**CNPA Priority Locations**

- A Aspen - Amber
- A Aspen - Red
- B Botanical - Amber
- B Botanical - Red
- F Fungi - Amber
- F Fungi - Red
- H Hymenoptera - Red
- IF Invertebrates, Fungi - Amber
- IA Amphibians - Red
- IF Invertebrates, Fungi - Red
- I Invertebrates - Amber
- I Invertebrates - Red
- Le Lepidoptera - Amber
- Le Lepidoptera - Red
- L Lichen - Amber
- L Lichen - Red
- M Mosses - Amber

1 CNPA Record Number

Kilometres  
0 0.1 0.2

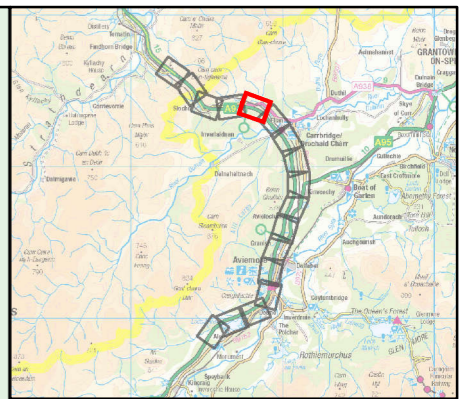
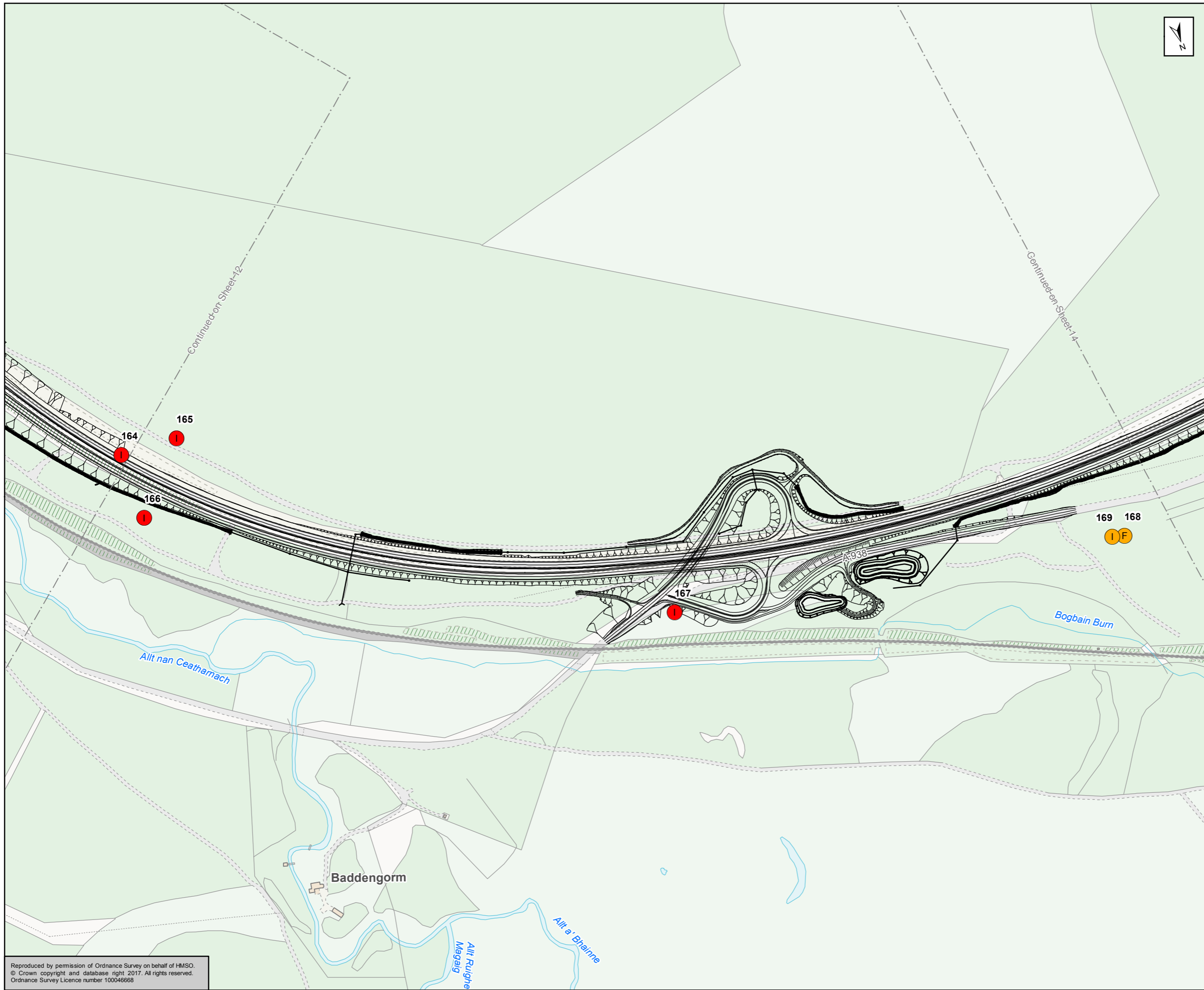
Status	FINAL	Subsidiary	B
--------	-------	------------	---



**Figure 12.9  
CNPA Priority  
Species Locations  
Sheet 12 of 17**

Scale	1:5,000	Drawn	RM	Checked	SK	Approved	ROB	Authorised	SB
Document Number	A9P11-AMJ-EBD-H_ZZZZ_XZ-DR-GI-0133							Revision	P04
Project	Originator	Volume							
Location	Type	Role	Number						

Reproduced by permission of Ordnance Survey on behalf of HMSO.  
© Crown copyright and database right 2017. All rights reserved.  
Ordnance Survey Licence number 100046668



Proposed Scheme

**CNPA Priority Locations**

- A Aspen - Amber
- A Aspen - Red
- B Botanical - Amber
- B Botanical - Red
- F Fungi - Amber
- F Fungi - Red
- H Hymenoptera - Red
- IF Invertebrates, Fungi - Amber
- IA Invertebrates, Amphibians - Red
- IF Invertebrates, Fungi - Red
- I Invertebrates - Amber
- I Invertebrates - Red
- Le Lepidoptera - Amber
- Le Lepidoptera - Red
- L Lichen - Amber
- L Lichen - Red
- M Mosses - Amber

1 CNPA Record Number

Kilometres  
0 0.1 0.2

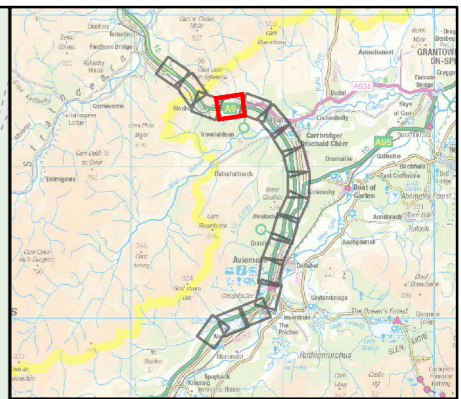
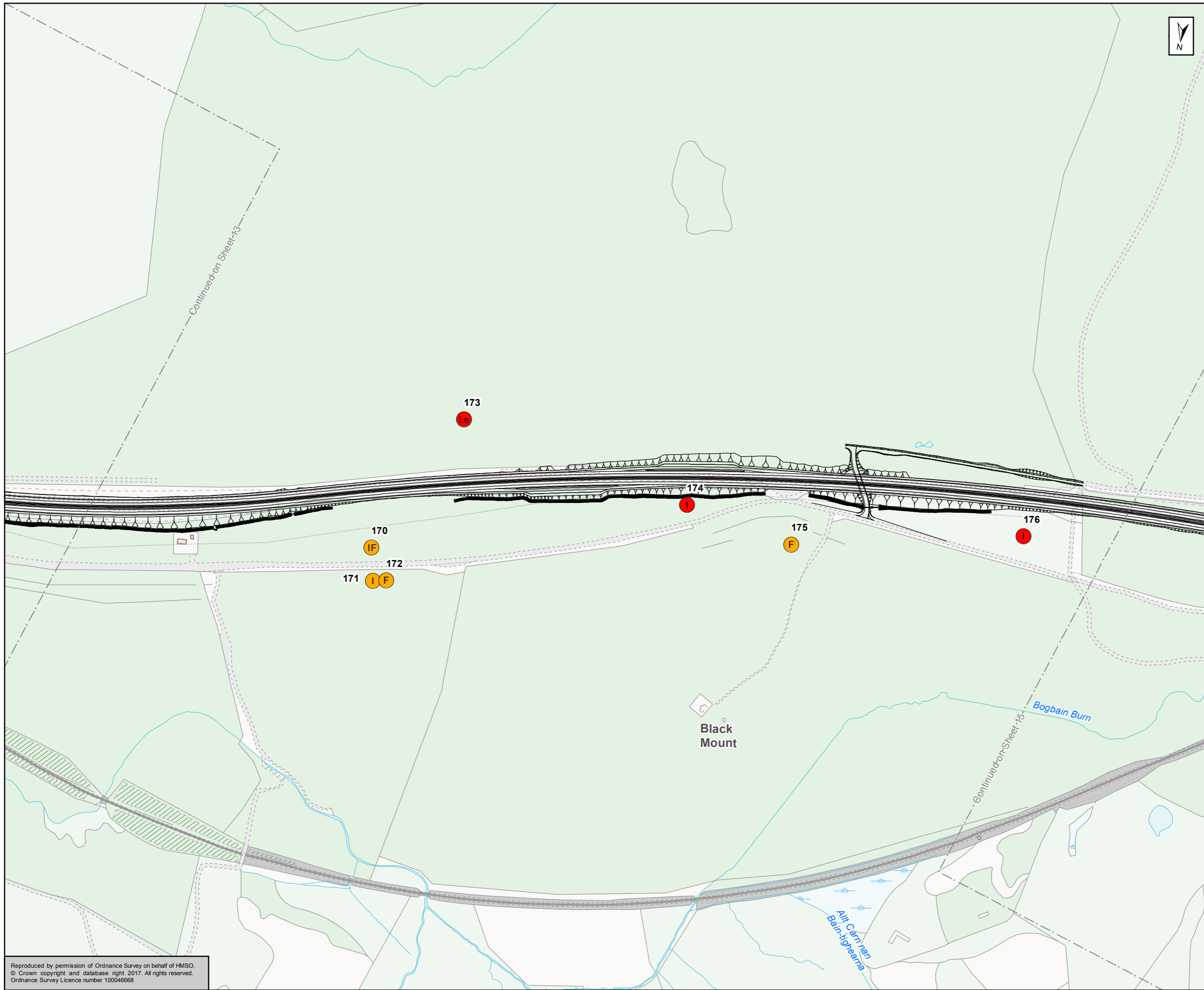
Status	FINAL	Subsidiary	B
--------	-------	------------	---



Figure 12.9  
CNPA Priority  
Species Locations  
Sheet 13 of 17

Scale	1:5,000	Drawn	RM	Checked	SK	Approved	ROB	Authorised	SB
Document Number	A9P11-AMJ-EBD-H_ZZZZZ_XX-DR-GI-0134							Revision	P04
Project	Originator	Volume							
Location	Type	Role	Number						

Reproduced by permission of Ordnance Survey on behalf of HMSO.  
© Crown copyright and database right 2017. All rights reserved.  
Ordnance Survey Licence number 100046668



Proposed Scheme

**CNPA Priority Locations**

- (A) Aspen - Amber
- (A) Aspen - Red
- (B) Botanical - Amber
- (B) Botanical - Red
- (F) Fungi - Amber
- (F) Fungi - Red
- (H) Hymenoptera - Red
- (IF) Invertebrates, Fungi - Amber
- (IA) Invertebrates, Amphibians - Red
- (IF) Invertebrates, Fungi - Red
- (I) Invertebrates - Amber
- (I) Invertebrates - Red
- (Le) Lepidoptera - Amber
- (Le) Lepidoptera - Red
- (L) Lichen - Amber
- (L) Lichen - Red
- (M) Mosses - Amber

1 CNPA Record Number

Kilometres  
0 0.1 0.2

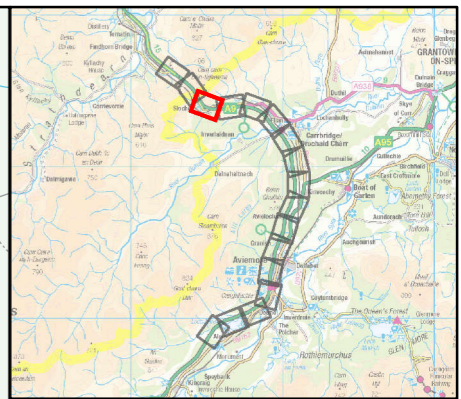
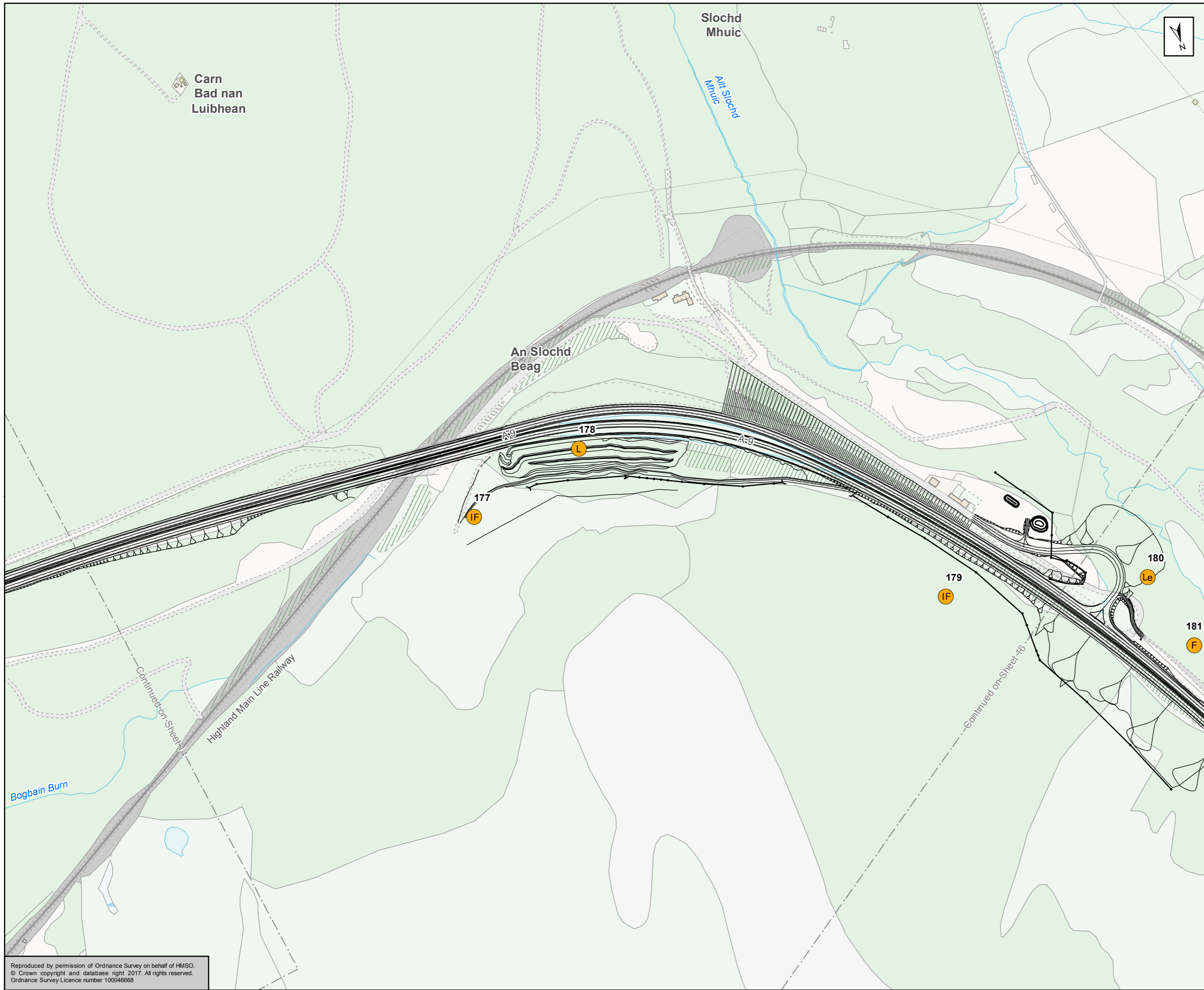
Status	FINAL	Suitability	B
--------	-------	-------------	---



Figure 12.9  
CNPA Priority  
Species Locations  
Sheet 14 of 17

Scale	1:5,000	Drawn	RM	Checked	SK	Approved	ROB	Authorised	SB
Document Number	A9P11-AMJ-EBD-H_ZZZZZ_XX-DR-GI-0135							Revision	P04
Project	Originator	Volume							
Location	Type	Role	Number						

Reproduced by permission of Ordnance Survey on behalf of HMSO.  
© Crown copyright and database right 2017. All rights reserved.  
Ordnance Survey Licence number 100046668



Proposed Scheme

**CNPA Priority Locations**

- A Aspen - Amber
- A Aspen - Red
- B Botanical - Amber
- B Botanical - Red
- F Fungi - Amber
- F Fungi - Red
- H Hymenoptera - Red
- IF Invertebrates, Fungi - Amber
- IA Invertebrates, Amphibians - Red
- IF Invertebrates, Fungi - Red
- I Invertebrates - Amber
- I Invertebrates - Red
- Le Lepidoptera - Amber
- Le Lepidoptera - Red
- L Lichen - Amber
- L Lichen - Red
- M Mosses - Amber

1 CNPA Record Number

Kilometres  
0 0.1 0.2

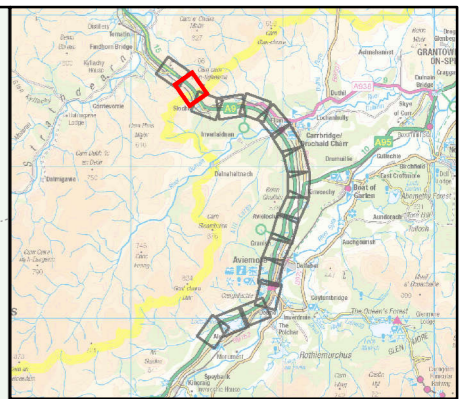
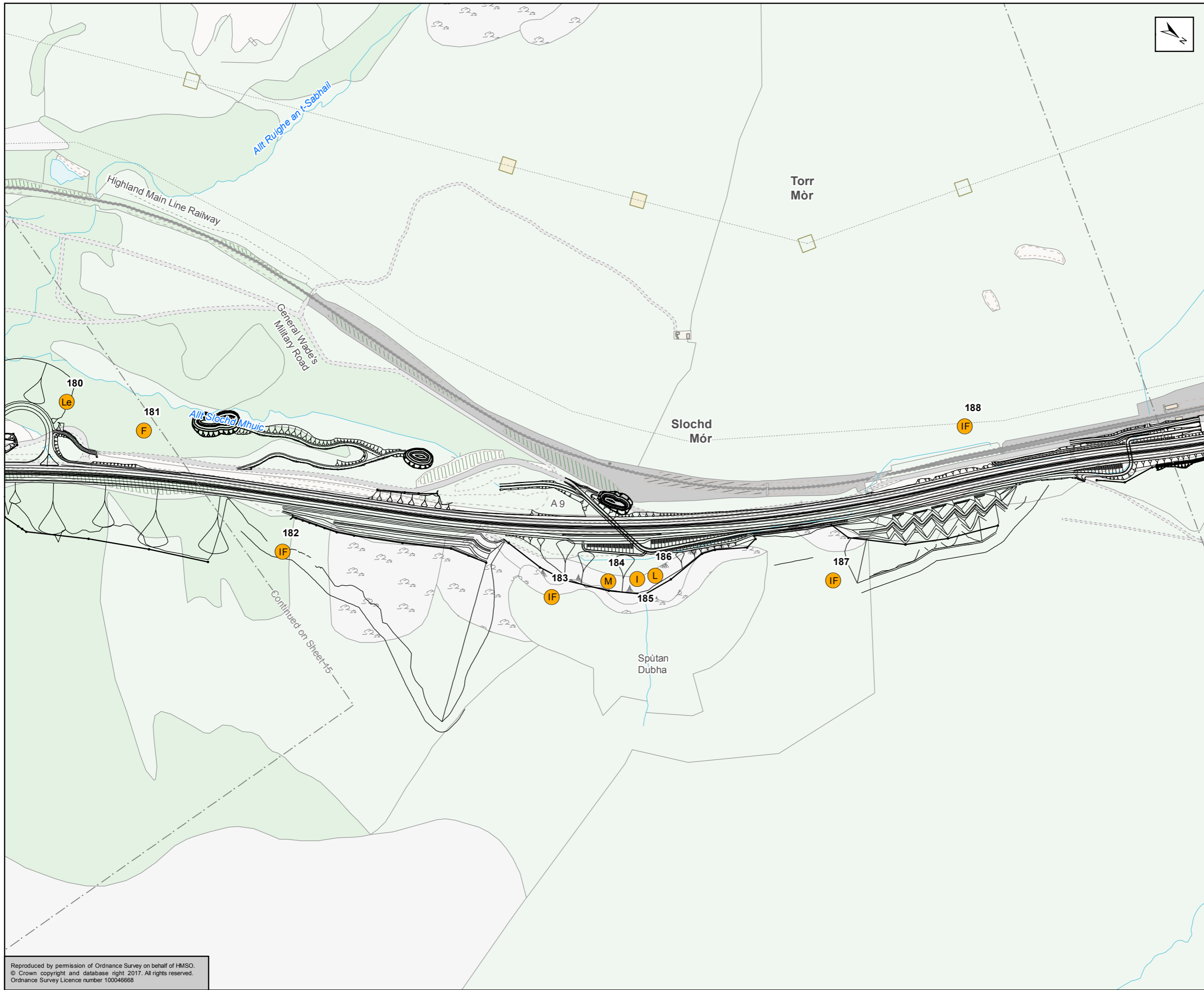
Status	Suitability
FINAL	B



Figure 12.9  
CNPA Priority  
Species Locations  
Sheet 15 of 17

Scale	Drawn	Checked	Approved	Authorised
1:5,000	RM	SK	ROB	SB
Document Number	Project	Originator	Volume	Revision
A9P11-AMJ-EBD-H_ZZZZ_XX-DR-GI-0136				P04
Location	Type	Role	Number	

Reproduced by permission of Ordnance Survey on behalf of HMSO.  
© Crown copyright and database right 2017. All rights reserved.  
Ordnance Survey Licence number 100046668



Proposed Scheme

**CNPA Priority Locations**

- A Aspen - Amber
- A Aspen - Red
- B Botanical - Amber
- B Botanical - Red
- F Fungi - Amber
- F Fungi - Red
- H Hymenoptera - Red
- IF Invertebrates, Fungi - Amber
- IA Amphibians - Red
- IF Invertebrates, Fungi - Red
- I Invertebrates - Amber
- I Invertebrates - Red
- Le Lepidoptera - Amber
- Le Lepidoptera - Red
- L Lichen - Amber
- L Lichen - Red
- M Mosses - Amber

1 CNPA Record Number

Kilometres  
0 0.1 0.2

Status	Subsidiary
FINAL	B

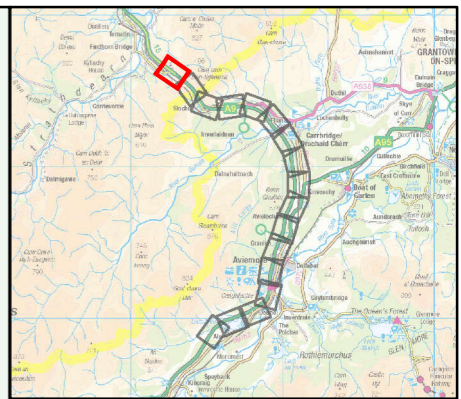
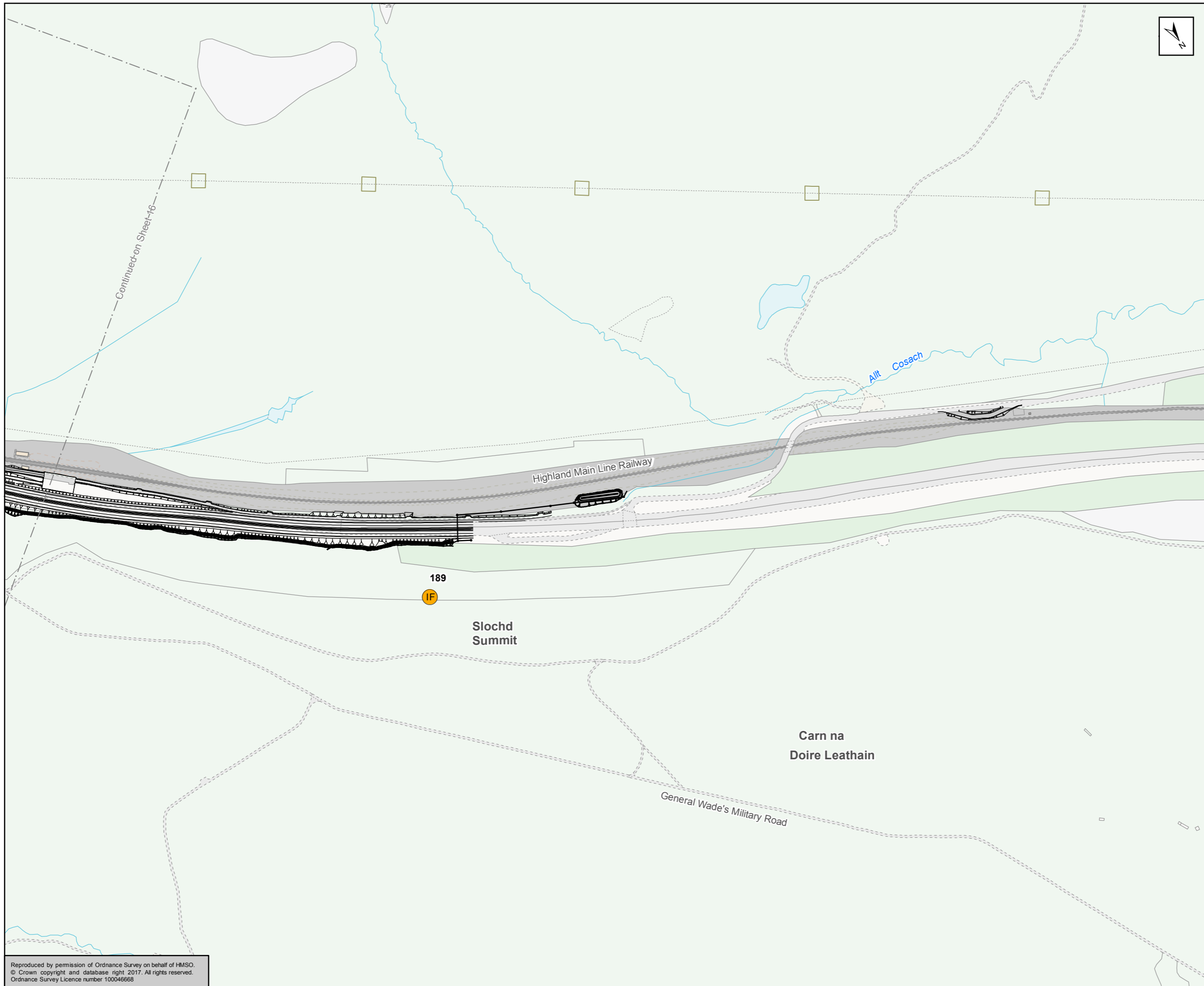


**Figure 12.9**  
CNPA Priority  
Species Locations  
Sheet 16 of 17

Scale	Drawn	Checked	Approved	Authorised
1:5,000	RM	SK	ROB	SB
Document Number				Revision
Project		Originator		Volume
A9P11-AMJ-EBD-H_ZZZZZ_XX-DR-GI-0137				P04
Location	Type	Role	Number	

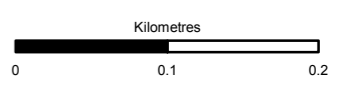
Reproduced by permission of Ordnance Survey on behalf of HMSO.  
© Crown copyright and database right 2017. All rights reserved.  
Ordnance Survey Licence number 100046668





Proposed Scheme  
**CNPA Priority Locations**

- A Aspen - Amber
  - A Aspen - Red
  - B Botanical - Amber
  - B Botanical - Red
  - F Fungi - Amber
  - F Fungi - Red
  - H Hymenoptera - Red
  - IF Invertebrates, Fungi - Amber
  - IA Invertebrates, Amphibians - Red
  - IF Invertebrates, Fungi - Red
  - I Invertebrates - Amber
  - I Invertebrates - Red
  - Le Lepidoptera - Amber
  - Le Lepidoptera - Red
  - L Lichen - Amber
  - L Lichen - Red
  - M Mosses - Amber
- 1 CNPA Record Number



Status	FINAL	Subsidiary	B
--------	-------	------------	---



Figure 12.9  
 CNPA Priority  
 Species Locations  
 Sheet 17 of 17

Scale	1:5,000	Drawn	RM	Checked	SK	Approved	ROB	Authorised	SB
Document Number	A9P11-AMJ-EBD-H_ZZZZZ_XX-DR-GI-0138							Revision	P04
Project	Originator	Volume							
Location	Type	Role	Number						

Reproduced by permission of Ordnance Survey on behalf of HMSO.  
 © Crown copyright and database right 2017. All rights reserved.  
 Ordnance Survey Licence number 100046668