

---

SCOTTISH STATUTORY INSTRUMENTS

---

2008 No.364

ROAD TRAFFIC

The A68 Trunk Road (Pathhead) (30mph Speed Limit) Order 2008

*Made*

*6<sup>th</sup> November 2008*

*Coming into force*

*17<sup>th</sup> November 2008*

The Scottish Ministers make the following Order in exercise of the powers conferred by sections 84(1)(a) and 124(1)(d) of the Road Traffic Regulation Act 1984(a) and of all other powers enabling them to do so.

They have complied with Part II of the Secretary of State's Traffic Orders (Procedure) (Scotland) Regulations 1987(b).

**Citation and commencement**

1. This Order may be cited as the A68 Trunk Road (Pathhead) (30mph Speed Limit) Order 2008 and shall come into force on 17<sup>th</sup> November 2008.

**Restriction of speed**

2. No person shall drive any motor vehicle at a speed exceeding 30mph on the length of road specified in the Schedule.

---

(a) 1984 c.27; section 84(1) was substituted by the Road Traffic Act 1991 (c.40), section 45(2). The Scottish Ministers are the traffic authority by virtue of section 121A of the Road Traffic Regulation Act 1984 (c.27) (inserted by the New Roads and Street Works Act 1991 (c.22), Schedule 8, paragraph 70 and amended by the Scotland Act 1998 (Consequential Modifications) Order 2001 (S.I. 2001/1400)) as read with section 151(1) of the Roads (Scotland) Act 1984 (c.54). The functions of the Secretary of State were transferred to the Scottish Ministers by the Scotland Act 1998 (Transfer of Functions to the Scottish Ministers etc.) Order 1999 (S.I. 1999/1750).

(b) S.I. 1987/2244.

### Revocation of previous Orders

3. The following Orders are revoked:

a. The A68 Trunk Road (Pathhead) (30mph Speed Limit) Variation and Pathhead Primary School (Part-time 20mph Speed Limit) Order 2006 (a).

b. The Edinburgh – Newcastle Upon Tyne Trunk Road (A68) (Pathhead) (Restricted Road) Order 1992(b).



G EDMOND  
A member of the staff of the Scottish Ministers

Transport Scotland  
Buchanan House  
58 Port Dundas Road  
Glasgow  
G4 0HF  
6<sup>th</sup> November 2008

## SCHEDULE

That length of the A68 Edinburgh to Newcastle Upon Tyne Trunk Road at Pathhead from a point 304 metres or thereby north of the junction of the B6367 Crichton Road, Pathhead to a point 440 metres or thereby south of the junction with Roman Camp Road, Pathhead, a distance of 1.32 kilometres or thereby.

PRESS NOTICE

THE A68 TRUNK ROAD (PATHHEAD) (30MPH SPEED LIMIT) ORDER 2008

THE SCOTTISH MINISTERS give notice that on 6<sup>th</sup> November 2008 they made the above Order under sections 84(1)(a) and 124(1)(d) of the Road Traffic Regulation Act 1984.

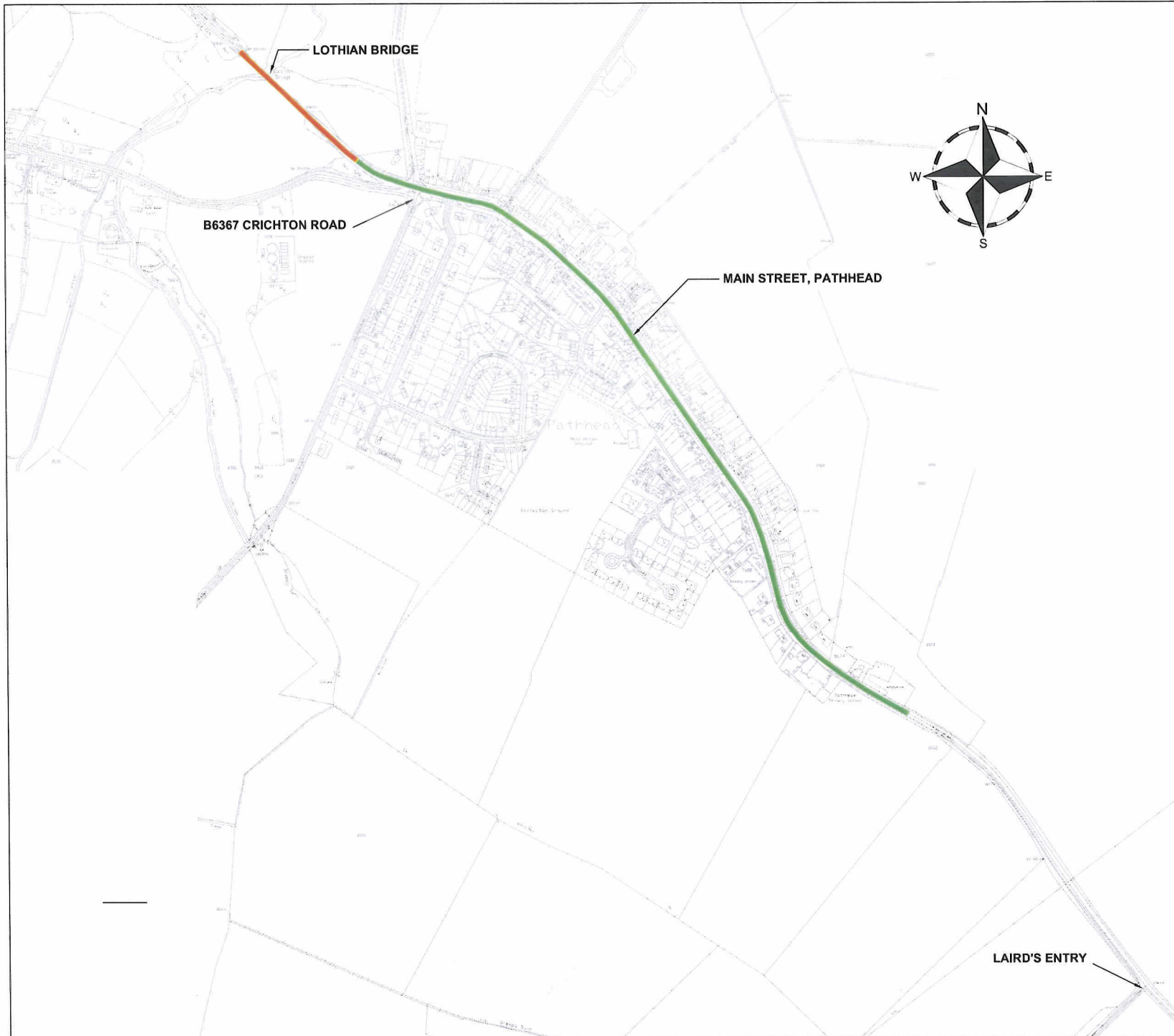
The effect of the Order is as described in the Midlothian Advertiser on 24<sup>th</sup> April 2008 and in the Edinburgh Gazette number 26444, Notice 1501/180 on Friday 25<sup>th</sup> April 2008. The Order comes into force on 17<sup>th</sup> November 2008.


A copy of the Order as made, together with the relevant plan and a copy of the existing Orders which are being revoked, may be inspected free of charge during normal business hours from 13<sup>th</sup> November 2008 to 31<sup>st</sup> December 2008 at the offices at Transport Scotland, Trunk Roads Network Management Directorate, Buchanan House, 58 Port Dundas Road, Glasgow G4 0HF, BEAR Scotland Ltd, 6a Dryden Road, Bilston Glen, Loanhead, Midlothian, EH20 9TY and at Pathhead Post Office, 139 Main Street, Pathhead, Midlothian, EH37 5PT.



G EDMOND  
A member of the staff of the Scottish Ministers

Transport Scotland  
Buchanan House  
58 Port Dundas Road  
Glasgow  
G4 0HF



Drawing Number		07/SE/0805/033/TRO/001	
KEY		EXISTING 30 MPH LIMIT <span style="color: green;">█</span> EXTENSION OF 30 MPH LIMIT <span style="color: orange;">█</span>	
Do not scale this drawing			
Rev	Date	Checked	
Status			
Rev.			
Client			
 <b>TRANSPORT SCOTLAND</b>			
Project			
Title			
The A68 Trunk Road (Pathhead) (30mph Speed Limit) Order 2008			
Drawing No.		07/SE/0805/033/TRO/001	
Scale		1:5000	
Date		Nov 2008	
Drawn	YS	Checked	DB
Approved		GB	