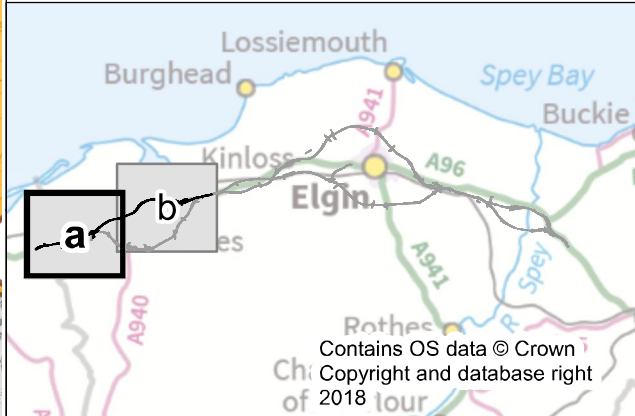


- Legend**
- Route option
 - 500m Buffer
 - Distillery Private Water Supply location
 - Private Water Supply location
 - Well location
 - Approximate extent of former RAF Forres & Elgin
 - Approximate extent of peat or mixed peat and peaty soils (Scottish Natural Heritage Carbon and Peat mapping)
 - Geological Conservation Review (GCR) site
 - Site of Special Scientific Interest (SSSI)*

*Note: Dataset only shows geological SSSI records relevant to assessment

Metres
0 250 500 1,000 1,500



C01	27/11/2018	Approved as Stage Complete	JB	KF
Rev.	Rev. Date	Drawing Suitability	Drawn	Appr'd

Mott MacDonald Sweco

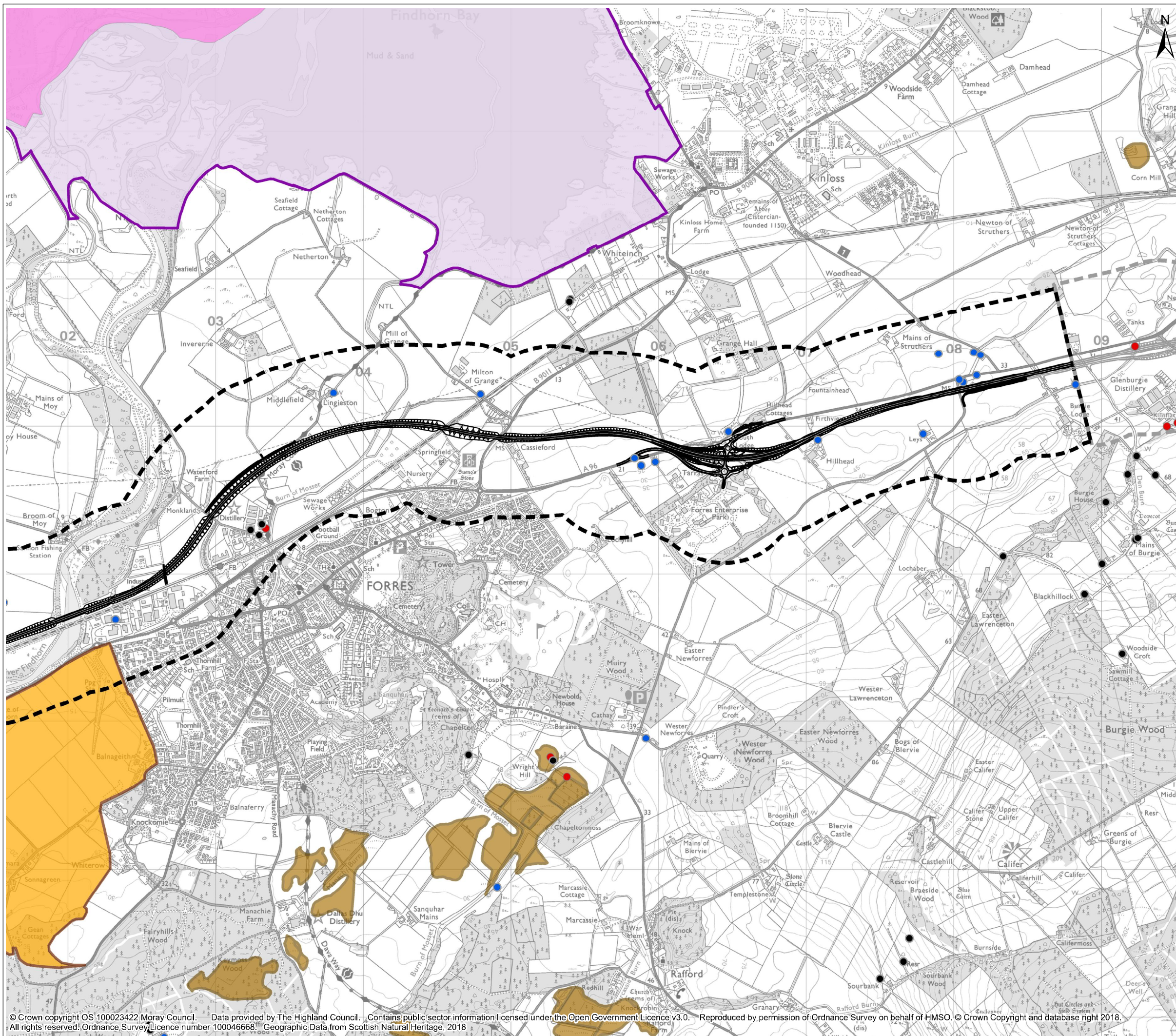


**A96 Dualling
Hardmuir to Fochabers**

Drawing Title
Figure 19.1a Geology, Soils, Contaminated Land & Groundwater
Hardmuir to Hillhead - North Option

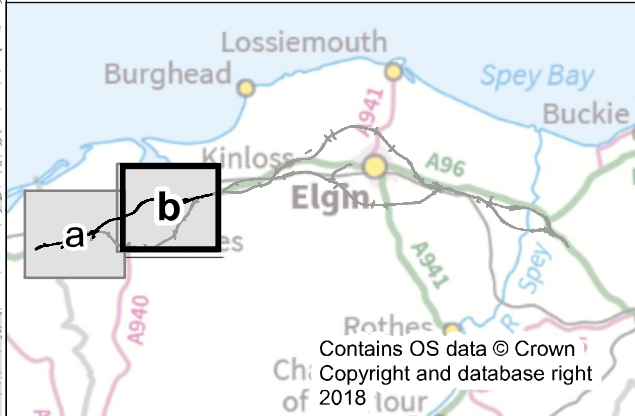
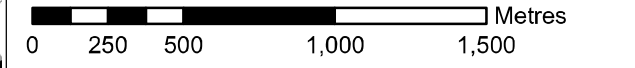
Scale @ A3	1:25,000	DO NOT SCALE
Project No.	117880	Status A2
BIM No.	A96PHF-MMS-EGN-00000-DR-CS-00043	

This drawing should not be relied on or used in circumstances other than those for which it was originally prepared and for which the Mott MacDonald Sweco (MMS) Joint Venture was commissioned. MMS accepts no responsibility for this drawing to any party other than the person by whom it was commissioned. Any party which breaches the provisions of this disclaimer shall indemnify MMS for all loss or damage arising therefrom.



- Legend**
- Route option
 - 500m Buffer
 - Distillery Private Water Supply location
 - Private Water Supply location
 - Well location
 - Approximate extent of former RAF Forres & Elgin
 - Approximate extent of peat or mixed peat and peaty soils (Scottish Natural Heritage Carbon and Peat mapping)
 - Geological Conservation Review (GCR) site
 - Site of Special Scientific Interest (SSSI)*

*Note: Dataset only shows geological SSSI records relevant to assessment



C01	27/11/2018	Approved as Stage Complete	JB	KF
Rev.	Rev. Date	Drawing Suitability	Drawn	Appr'd

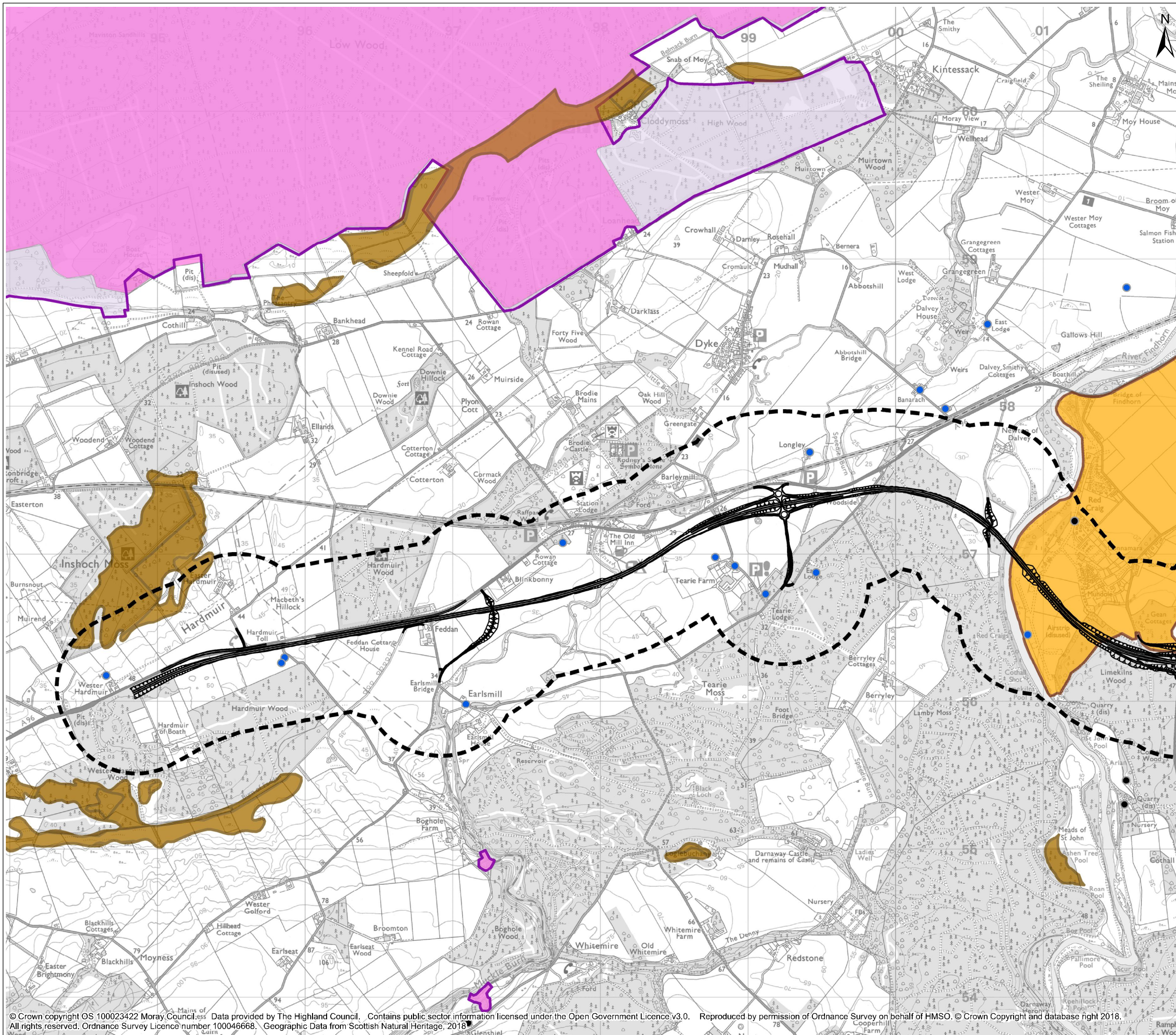
Mott MacDonald Sweco



Project: **A96 Dualling
Hardmuir to Fochabers**

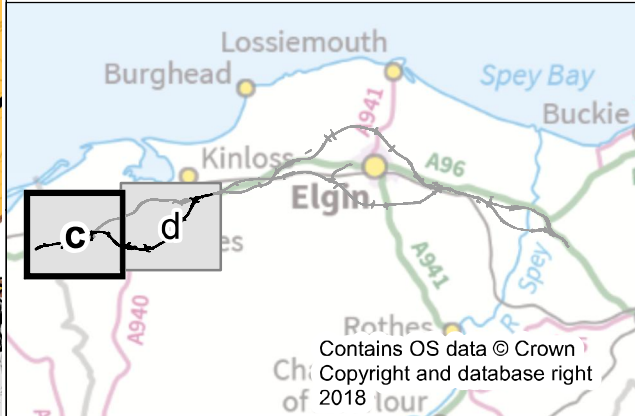
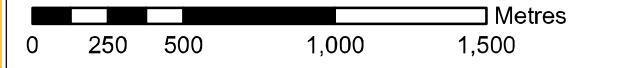
Drawing Title: **Figure 19.1b Geology, Soils, Contaminated Land & Groundwater
Hardmuir to Hillhead - North Option**

Scale @ A3	1:25,000	DO NOT SCALE
Project No.	117880	Status A2
BIM No.	A96PHF-MMS-EGN-00000-DR-CS-00043	



- Legend**
- Route option
 - 500m Buffer
 - Private Water Supply location
 - Well location
 - Distillery Private Water Supply location
 - Approximate extent of former RAF Forres & Elgin
 - Approximate extent of peat or mixed peat and peaty soils (Scottish Natural Heritage Carbon and Peat mapping)
 - Geological Conservation Review (GCR) site
 - Site of Special Scientific Interest (SSSI)*

*Note: Dataset only shows geological SSSI records relevant to assessment



C01	27/11/2018	Approved as Stage Complete	JB	KF
Rev.	Rev. Date	Drawing Suitability	Drawn	Appr'd

Mott MacDonald Sweco

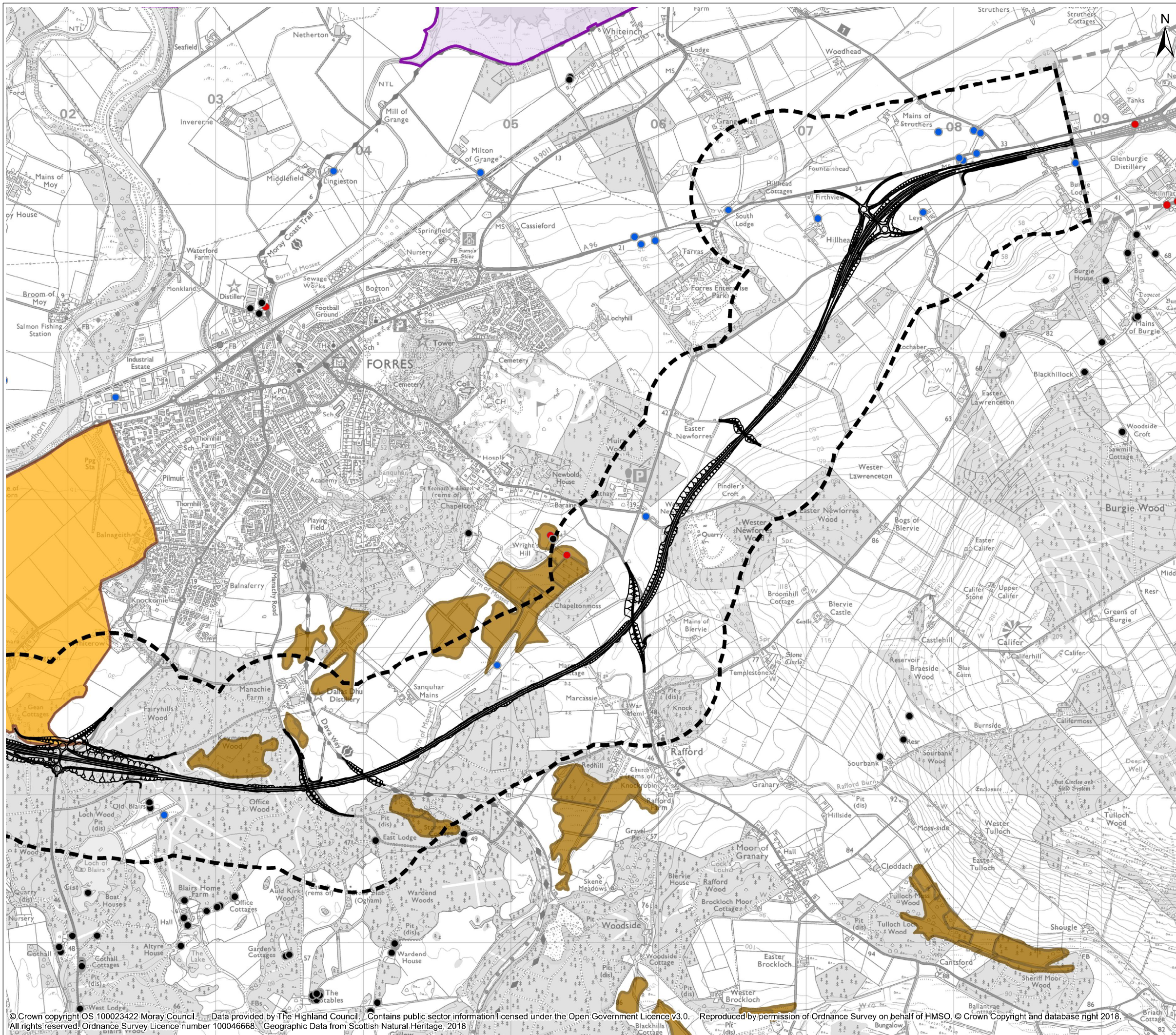


**A96 Dualling
Hardmuir to Fochabers**

Drawing Title
**Figure 19.1c Geology, Soils, Contaminated Land & Groundwater
Hardmuir to Hillhead - South Option**

Scale @ A3	1:25,000	DO NOT SCALE
Project No.	117880	Status
BIM No.	A96PHF-MMS-EGN-00000-DR-CS-00043	

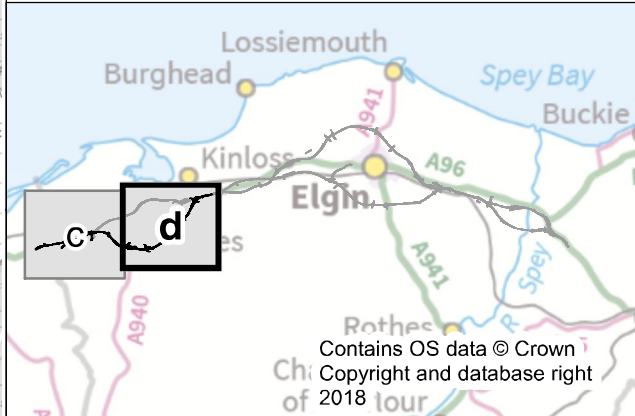
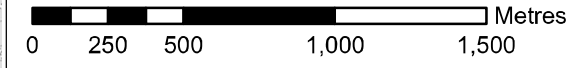
This drawing should not be relied on or used in circumstances other than those for which it was originally prepared and for which the Mott MacDonald Sweco (MMS) Joint Venture was commissioned. MMS accepts no responsibility for this drawing to any party other than the person by whom it was commissioned. Any party which breaches the provisions of this disclaimer shall indemnify MMS for all loss or damage arising therefrom.



Legend

- Route option
- 500m Buffer
- Private Water Supply location
- Well location
- Distillery Private Water Supply location
- Approximate extent of former RAF Forres & Elgin
- Approximate extent of peat or mixed peat and peaty soils (Scottish Natural Heritage Carbon and Peat mapping)
- Geological Conservation Review (GCR) site
- Site of Special Scientific Interest (SSSI)*

*Note: Dataset only shows geological SSSI records relevant to assessment



C01	27/11/2018	Approved as Stage Complete	JB	KF
Rev.	Rev. Date	Drawing Suitability	Drawn	Appr'd

Mott MacDonald Sweco



Project: **A96 Dualling
Hardmuir to Fochabers**

Drawing Title: **Figure 19.1d Geology, Soils, Contaminated Land & Groundwater
Hardmuir to Hillhead - South Option**

Scale @ A3	1:25,000	DO NOT SCALE
Project No.	117880	Status A2
BIM No.	A96PHF-MMS-EGN-00000-DR-CS-00043	

This drawing should not be relied on or used in circumstances other than those for which it was originally prepared and for which the Mott MacDonald Sweco (MMS) Joint Venture was commissioned. MMS accepts no responsibility for this drawing to any party other than the person by whom it was commissioned. Any party which breaches the provisions of this disclaimer shall indemnify MMS for all loss or damage arising therefrom.