

Legend

- Route option
- 500m Buffer around Shortlisted Option
- Well - from historic map interpretation
- Active mineral site
- Watercourse
- Historical railway line (includes main Aberdeen - Inverness line)

Historical map features*

- General quarrying
- Quarrying of sand & clay, operation of sand & gravel pits
- Infilled quarry or water feature
- Heap, unknown constituents (identified from historical mapping review)
- Heap, unknown constituents (data provided by Landmark)
- Marshlands

Landmark potentially infilled land (water feature)**

- Blue triangle

Landmark potentially infilled land (non-water feature)**

- Green triangle

Potential hazard

- Landslide ground stability
 - Moderate
 - Low
- Compressible ground stability ***
 - High
 - Moderate
- Collapsible ground stability
 - Very Low
- Ground dissolution stability
 - Low
 - Very Low
- Shrinking or swelling clay ground stability
 - Low
 - Very Low

Artificial Deposits - Superficial

- Infilled Ground - Made Ground (Composition Unspecified), IG
- Landslaped Ground (Undivided) - Unknown Lithology, LGU
- Made Ground (Undivided) - Made Ground (Composition Unspecified), MGU
- Worked Ground (Undivided) - Void, WGU

* Derived from Landmark Potentially Contaminative Industrial Uses (Past Land Use) dataset and a review of the historical maps
 ** Data received from Landmark, from their small scale mapping product
 *** Due to the extensive coverage and overlay of the data presented on the Geotechnical Constraints drawings, areas of low hazard for potential compressible ground, areas of very low and low hazard for running sand ground stability and areas of very low hazard for landslide ground are included within the GIS database only, and are not indicated on the drawings

0 500 1,000 Metres

C01	27/11/2018	Approved as Stage Complete	JB	SR
Rev.	Rev. Date	Drawing Suitability	Drawn	Appr'd

Mott MacDonald Sweco

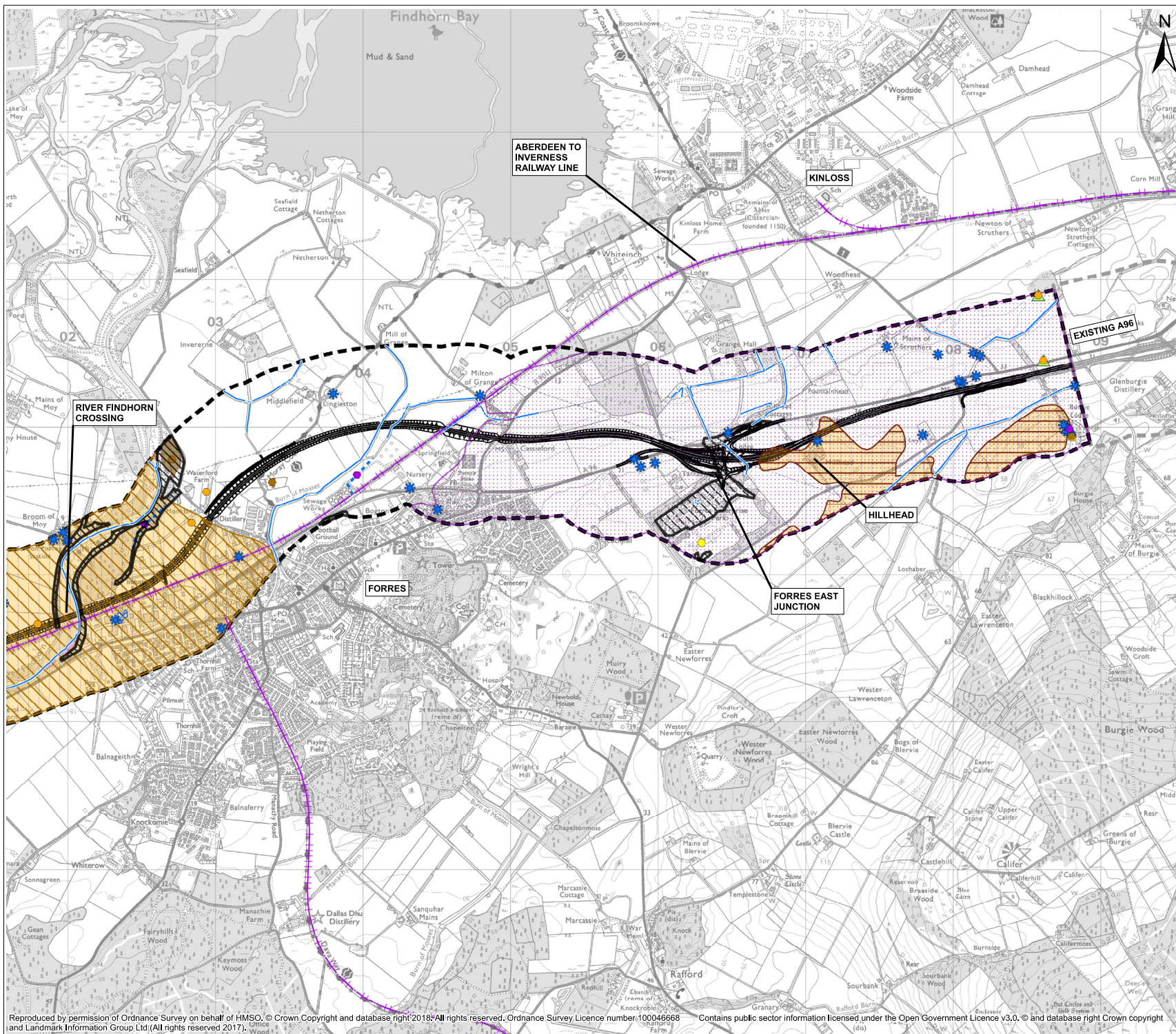
Client: **TRANSRIP SCOTLAND** **A96 DUALLING HARDMUIR TO FOCHABERS**

Project: **A96 DUALLING HARDMUIR TO FOCHABERS**

Drawing Title: **FIGURE 5.15 HARDMUIR TO HILLHEAD NORTH OPTION GEOTECHNICAL CONSTRAINTS SHEET 1 OF 2**

Scale @ A3	1:25,000	DO NOT SCALE
Project No.	117880	Status
BIM No.	A96PHF-MMS-EGT-00000-DR-GE-00029	A2

This drawing should not be relied on or used in circumstances other than those for which it was originally prepared and for which the Mott MacDonald Sweco (MMS) Joint Venture was commissioned. MMS accepts no responsibility for this drawing to any party other than the person by whom it was commissioned. Any party which breaches the provisions of this disclaimer shall indemnify MMS for all loss or damage arising therefrom.



Legend

- Route option
- 500m Buffer around Shortlisted Option
- Well - from historic map interpretation
- Active mineral site
- Watercourse
- Historical railway line (includes main Aberdeen - Inverness line)

Historical map features*

- General quarrying
- Quarrying of sand & clay, operation of sand & gravel pits
- Infilled quarry or water feature
- Heap, unknown constituents (identified from historical mapping review)
- Heap, unknown constituents (data provided by Landmark)
- Marshlands

Landmark potentially infilled land (water feature)**

- Blue triangle

Landmark potentially infilled land (non-water feature)**

- Green triangle

Potential hazard

- Landslide ground stability
 - Moderate
 - Low
 - Compressible ground stability ***
 - High
 - Moderate
- Collapsible ground stability
 - Very Low
 - Ground dissolution stability
 - Very Low
 - Shrinking or swelling clay ground stability
 - Low
 - Very Low

Artificial Deposits - Superficial

- Infilled Ground - Made Ground (Composition Unspecified), IG
- Landedscaped Ground (Undivided) - Unknown Lithology, LGU
- Made Ground (Undivided) - Made Ground (Composition Unspecified), MGU
- Worked Ground (Undivided) - Void, WGU

* Derived from Landmark Potentially Contaminative Industrial Uses (Past Land Use) dataset and a review of the historical maps
 ** Data received from Landmark, from their small scale mapping product
 *** Due to the extensive coverage and overlay of the data presented on the Geotechnical Constraints drawings, areas of low hazard for potential compressible ground, areas of very low and low hazard for running sand ground stability and areas of very low hazard for landslide ground are included within the GIS database only, and are not indicated on the drawings

0 500 1000 Metres

CO1	27/11/2018	Approved as Stage Complete	JB	SR
Rev.	Rev. Date	Drawing Suitability	Drawn	Appr'd

Mott MacDonald Sweco

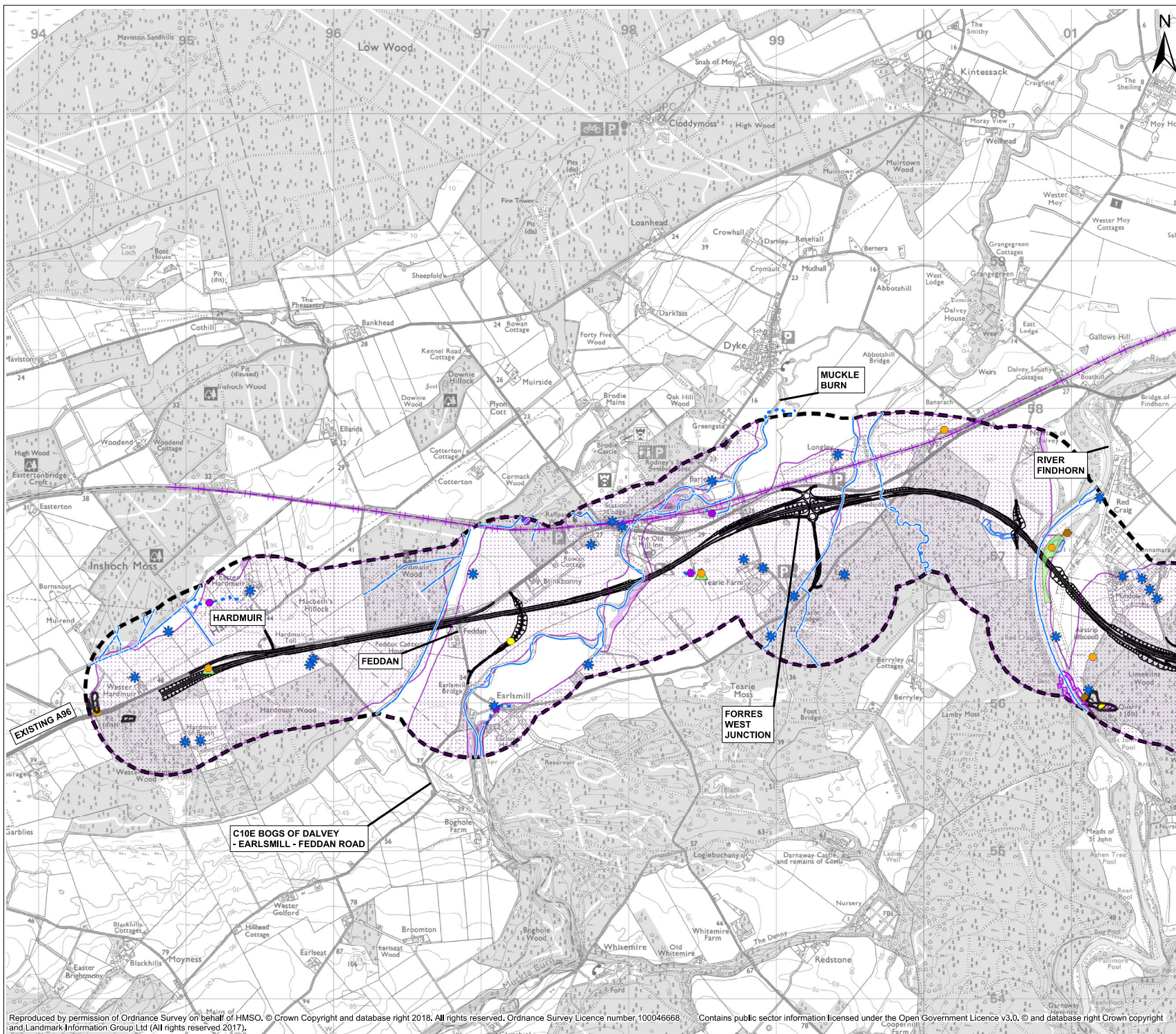
Client: **A96 DUALLING HARDMUIR TO FOCHABERS**

Project: **A96 DUALLING HARDMUIR TO FOCHABERS**

Drawing Title: **FIGURE 5.16 HARDMUIR TO HILLHEAD NORTH OPTION GEOTECHNICAL CONSTRAINTS SHEET 2 OF 2**

Scale @ A3	1:25,000	DO NOT SCALE
Project No.	117880	Status
BIM No.	A96PHF-MMS-EGT-00000-DR-GE-00030	A2

This drawing should not be relied on or used in circumstances other than those for which it was originally prepared and for which the Mott MacDonald Sweco (MMS) Joint Venture was commissioned. MMS accepts no responsibility for this drawing to any party other than the person by whom it was commissioned. Any party which breaches the provisions of this disclaimer shall indemnify MMS for all loss or damage arising therefrom.



Legend

- Route option
- 500m Buffer around Shortlisted Option
- Well - from historic map interpretation
- Active mineral site
- Watercourse
- Historical railway line (includes main Aberdeen-Inverness line)

Historical map features*

- General quarrying
- Quarrying of sand & clay, operation of sand & gravel pits
- Infilled quarry or water feature
- Heap, unknown constituents (identified from historical mapping review)
- Heap, unknown constituents (data provided by landmark)
- Marshlands

Landmark potentially infilled land (water feature)**

- Landmark potentially infilled land (non-water feature)**

Potential hazard

- Landslide ground stability
 - Moderate
 - High
 - Moderate
- Compressible ground stability***
 - High
 - Moderate
- Collapsible ground stability
 - Very Low
- Ground dissolution stability
 - Very Low
- Shrinking or swelling clay ground stability
 - Low
 - Very Low

Artificial Deposits - Superficial

- Infilled Ground - Made Ground (Composition Unspecified), IG
- Landscaped Ground (Undivided) - Unknown Lithology, LGU
- Made Ground (Undivided) - Made Ground (Composition Unspecified), MGU
- Worked Ground (Undivided) - Void, WGU

* Derived from Landmark Potentially Contaminative Industrial Uses (Past Land Use) dataset and a review of the historical maps
 ** Data received from Landmark, from their small scale mapping product
 *** Due to the extensive coverage and overlay of the data presented on the Geotechnical Constraints drawings, areas of low hazard for potential compressible ground, areas of very low and low hazard for running sand ground stability and areas of very low hazard for landslide ground are included within the GIS database only, and are not indicated on the drawings

0 500 1,000 Metres

C01	27/11/2018	Approved as Stage Complete	JB	SR
Rev.	Rev. Date	Drawing Suitability	Drawn	Appr'd

Mott MacDonald Sweco

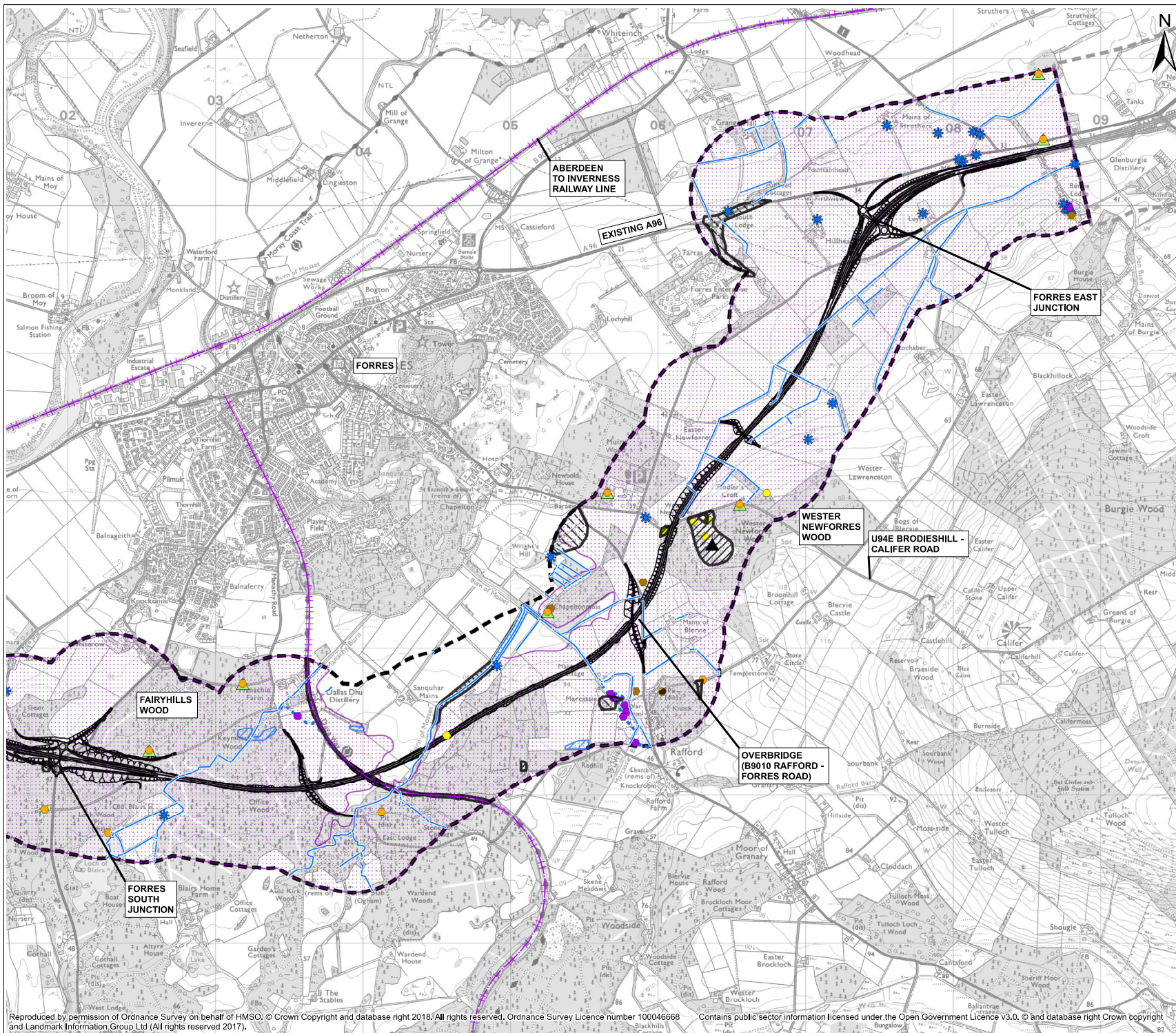
Client: **TRANSPORENT SCOTLAND** **A96 DUALLING HARDMUIR TO FOCHABERS**

Project: **A96 DUALLING HARDMUIR TO FOCHABERS**

Drawing Title: **FIGURE 5.17 HARDMUIR TO HILLHEAD SOUTH OPTION GEOTECHNICAL CONSTRAINTS SHEET 1 OF 2**

Scale @ A3	1:25,000	DO NOT SCALE
Project No.	117880	Status
BIM No.	A96PHF-MMS-EGT-00000-DR-GE-00031	A2

This drawing should not be relied on or used in circumstances other than those for which it was originally prepared and for which the Mott MacDonald Sweco (MMS) Joint Venture was commissioned. MMS accepts no responsibility for this drawing to any party other than the person by whom it was commissioned. Any party which breaches the provisions of this disclaimer shall indemnify MMS for all loss or damage arising therefrom.



Legend

- Route option
- 500m Buffer around Shortlisted Option
- Well - from historic map interpretation
- Active mineral site
- Watercourse
- Historical railway line (includes main Aberdeen-Inverness line)

Historical map features*

- General quarrying
- Quarrying of sand & clay, operation of sand & gravel pits
- Infilled quarry or water feature
- Heap, unknown constituents (identified from historical mapping review)
- Heap, unknown constituents (data provided by landmark)
- Marshlands

Landmark potentially infilled land (water feature)**

- Landmark potentially infilled land (non-water feature)**

Potential hazard

- Landslide ground stability
 - Moderate
 - Low
 - High
 - Moderate
- Compressible ground stability ***
 - High
 - Moderate
- Collapsible ground stability
 - Very Low
- Ground dissolution stability
 - Very Low
- Shrinking or swelling clay ground stability
 - Low
 - Very Low

Artificial Deposits - Superficial

- Infilled Ground - Made Ground (Composition Unspecified), IG
- Landscaped Ground (Undivided) - Unknown Lithology, LGU
- Made Ground (Undivided) - Made Ground (Composition Unspecified), MGU
- Worked Ground (Undivided) - Void, WGU

* Derived from Landmark Potentially Contaminative Industrial Sites (Past Land Use) dataset and a review of the historical maps
 ** Data retrieved from Landmark, from their small scale mapping product
 *** Due to the extensive coverage and overlay of the data presented on the Geotechnical Constraints drawings, areas of low hazard for potential compressible ground, areas of very low and low hazard for running sand stability and areas of very low hazard for landslide ground are included within the GIS database only, and are not indicated on the drawings

0 500 1000 Metres

C01	27/11/2018	Approved as Stage Complete	JB	SR
Rev.	Rev. Date	Drawing Suitability	Drawn	Appr'd

Mott MacDonald Sweco

Client: **TRANSPIRE SCOTLAND** **A96 DUALING HARDMUIR TO FOCHABERS**

Project: **A96 DUALING HARDMUIR TO FOCHABERS**

Drawing Title: **FIGURE 5.18 HARDMUIR TO HILLHEAD SOUTH OPTION GEOTECHNICAL CONSTRAINTS SHEET 2 OF 2**

Scale @ A3	1:25,000	DO NOT SCALE
Project No.	117880	Status A2
BIM No.	A96PHF-MMS-EGT-00000-DR-GE-00032	

This drawing should not be relied on or used in circumstances other than those for which it was originally prepared and for which the Mott MacDonald Sweco (MMS) Joint Venture was commissioned. MMS accepts no responsibility for this drawing to any party other than the person by whom it was commissioned. Any party which breaches the provisions of this disclaimer shall indemnify MMS for all loss or damage arising therefrom.