

Legend

- Route option
- 500m Buffer
- Borehole - The Moray Council
- Borehole - British Geological Survey
- Artificial Deposits - Superficial
- Infilled Ground - Made Ground (Composition Unspecified), IG
- Landscaped Ground (Undivided) - Unknown Lithology, LGU
- Made Ground (Undivided) - Made Ground (Composition Unspecified), MGU
- Worked Ground (Undivided) - Void, WGU
- Superficial Geology
 - ALF-XVSZC, Alluvial Fan Deposits
 - ALRT-XVSZC, Alluvium and River Terrace Deposits (Undifferentiated)
 - ALV-XCZSV, Alluvium
 - ARDS-XSZ, Ardersier Silts Formation
 - BROCK, Bedrock at or near surface
 - FINT-DMTN, Finglack Till Formation
 - GFDD-XVSZ, Glaciofluvial Deltaic Deposits
 - GFDU-XVSZ, Glaciofluvial Deposits
 - GFIC-XSV, Glaciofluvial Ice Contact Deposits
 - GFIC-XSVZ, Glaciofluvial Ice Contact Deposits
 - GFSD-XSV, Glaciofluvial Sheet Deposits
 - GFSD-XVSZ, Glaciofluvial Sheet Deposits
 - GFSSU-V, Glaciofluvial Sub-Glacial Deposits
 - GFSD-XSV, Glaciofluvial Terrace Deposits
 - GLLD-XCZS, Glaciolacustrine Deposits
 - GRHS-XSZC, Grange Hill Sand Formation
 - HMGD-XDSV, Hummocky (Moundy) Glacial Deposits
 - LDE-XCZS, Lacustrine
 - LDE-XCZS, Lacustrine Deposits
 - PEAT-P, Peat
 - RMBDD-XVSZ, Raised Marine Beach Deposits
 - RMD, Raised Marine Deposits
 - RMD1-XSV, Raised Marine Deposits
 - RMD2-XSV, Raised Marine Deposits
 - RTDU-XVSZ, River Terrace Deposits (Undifferentiated)
 - SUPNM-WATR, Superficial Theme Not Recorded
 - TILLD-DMTN, Till Devensian

0 500 1,000 Metres

C01	27/11/2018	Approved as Stage Complete	JB	SR
Rev.	Rev. Date	Drawing Suitability	Drawn	Appr'd

Mott MacDonald Sweco

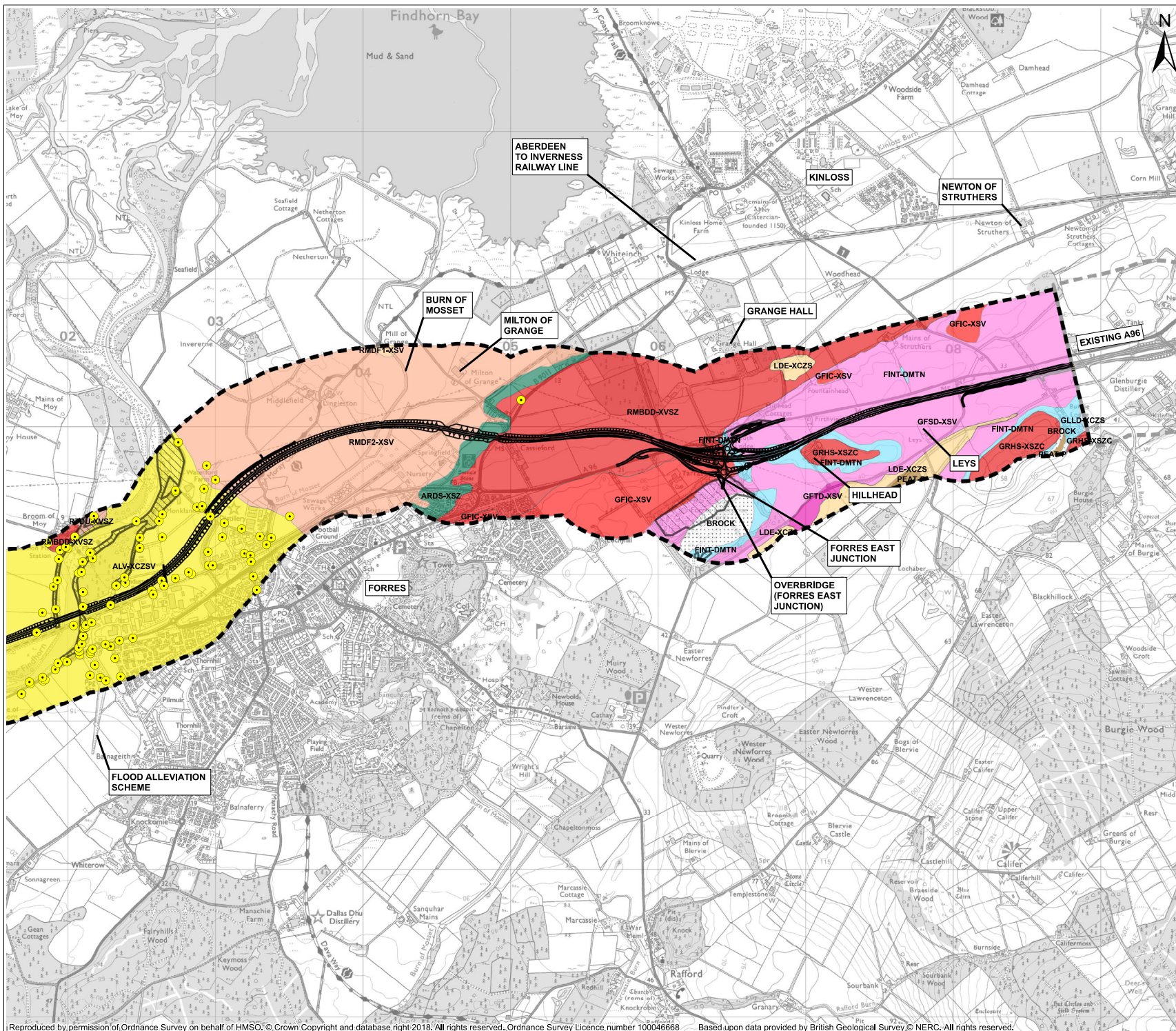


Client
Project
**A96 DUALLING
HARDMUIR TO FOCHABERS**

Drawing Title
**FIGURE 5.7 HARDMUIR TO HILLHEAD
NORTH OPTION SUPERFICIAL GEOLOGY
SHEET 1 OF 2**

Scale @ A3 1:25,000 DO NOT SCALE
Project No. 117880 Status A2
BIM No. A96PHF-MMS-EGT-00000-DR-GE-00001

This drawing should not be relied on or used in circumstances other than those for which it was originally prepared and for which the Mott MacDonald Sweco (MMS) Joint Venture was commissioned. MMS accepts no responsibility for this drawing to any party other than the person by whom it was commissioned. Any party which breaches the provisions of this disclaimer shall indemnify MMS for all loss or damage arising therefrom.



Legend

- Route option
- 500m Buffer
- Borehole - The Moray Council
- Borehole - British Geological Survey
- Artificial Deposits - Superficial
- Infilled Ground - Made Ground (Composition Unspecified), IG
- Landscaped Ground (Undivided) - Unknown Lithology, LGU
- Made Ground (Undivided) - Made Ground (Composition Unspecified), MGU
- Worked Ground (Undivided) - Void, WGU
- Superficial Geology
- ALF-XVSZC, Alluvial Fan Deposits
- ALRT-XVSZC, Alluvium and River Terrace Deposits (Undifferentiated)
- ALV-XCZSV, Alluvium
- ARDS-XSZ, Ardersier Silts Formation
- BROCK, Bedrock at or near surface
- FINT-DMTN, Flinglack Till Formation
- GFDD-XVSZ, Glaciofluvial Deltaic Deposits
- GFDU-XVSZ, Glaciofluvial Deposits
- GFIC-XSV, Glaciofluvial Ice Contact Deposits
- GFIC-XVSZ, Glaciofluvial Ice Contact Deposits
- GFSD-XSV, Glaciofluvial Sheet Deposits
- GFSD-XVSZ, Glaciofluvial Sheet Deposits
- GFSSU-V, Glaciofluvial Sub-Glacial Deposits
- GFSD-XSV, Glaciofluvial Terrace Deposits
- GLLD-XCZS, Glaciolacustrine Deposits
- GRHS-XSZC, Grange Hill Sand Formation
- HMGD-XDSV, Hummocky (Moundy) Glacial Deposits
- LDE-XCZS, Lacustrine
- LDE-XCZS, Lacustrine Deposits
- PEAT-P, Peat
- RMBDD-XVSZ, Raised Marine Beach Deposits
- RMD, Raised Marine Deposits
- RMD1-XSV, Raised Marine Deposits
- RMD2-XSV, Raised Marine Deposits
- RTDU-XVSZ, River Terrace Deposits (Undifferentiated)
- SUPNM-WATR, Superficial Theme Not Recorded
- TILLD-DMTN, Till Devensian

0 500 1,000 Metres

C01	27/11/2018	Approved as Stage Complete	JB	SR
Rev.	Rev. Date	Drawing Suitability	Drawn	Appr'd

Mott MacDonald Sweco

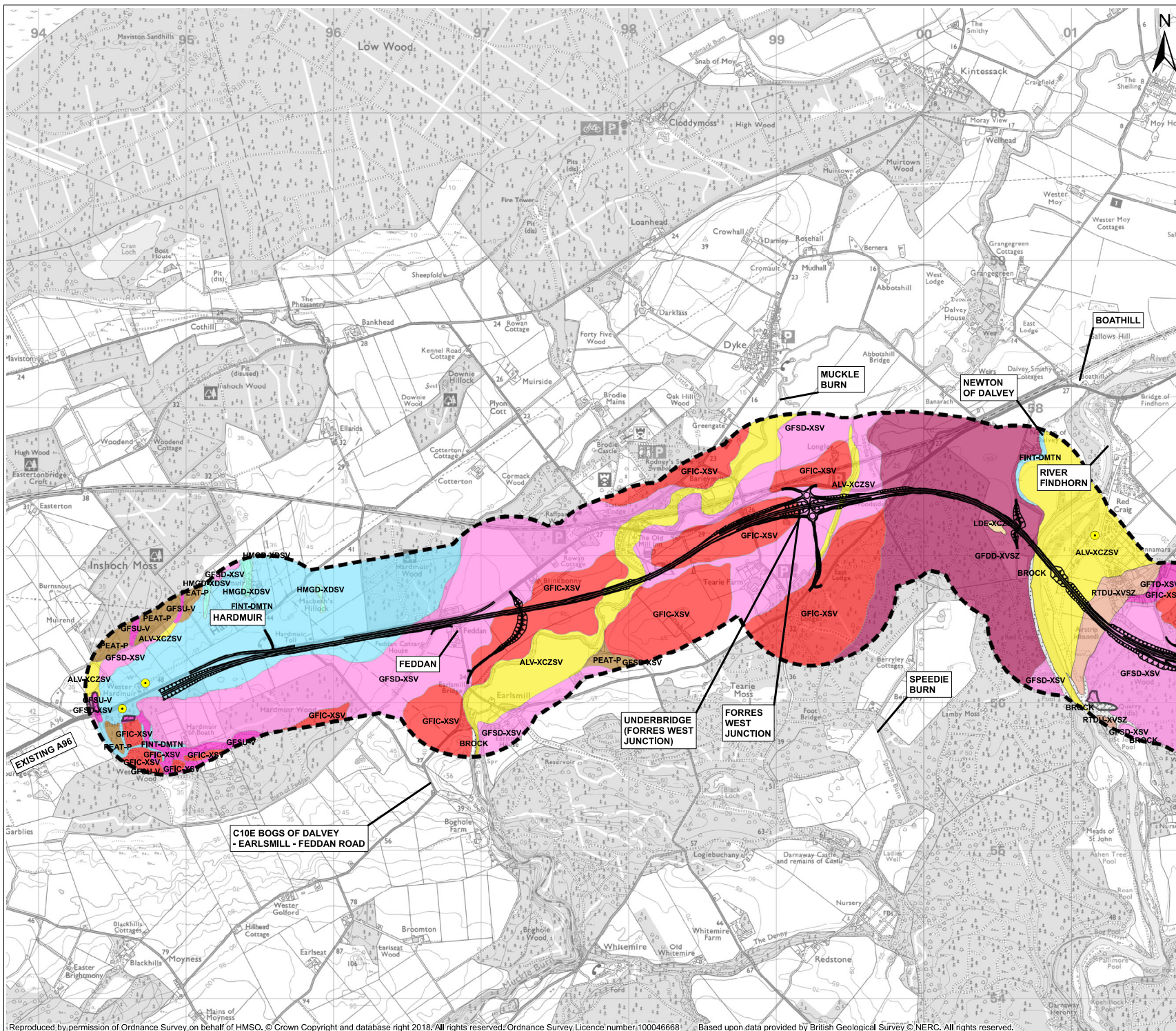


Project
**A96 DUALLING
HARDMUIR TO FOCHABERS**

Drawing Title
**FIGURE 5.8 HARDMUIR TO HILLHEAD
NORTH OPTION SUPERFICIAL GEOLOGY
SHEET 2 OF 2**

Scale @ A3	1:25,000	DO NOT SCALE
Project No.	117880	Status
BIM No.	A96PHF-MMS-EGT-00000-DR-GE-00002	A2

This drawing should not be relied on or used in circumstances other than those for which it was originally prepared and for which the Mott MacDonald Sweco (MMS) Joint Venture was commissioned. MMS accepts no responsibility for this drawing to any party other than the person by whom it was commissioned. Any party which breaches the provisions of this disclaimer shall indemnify MMS for all loss or damage arising therefrom.



Legend

- Route option
- 500m Buffer
- Borehole - The Moray Council
- Borehole - British Geological Survey
- Artificial Deposits - Superficial
- Infilled Ground - Made Ground (Composition Unspecified), IG
- Landscaped Ground (Undivided) - Unknown Lithology, LGU
- Made Ground (Undivided) - Made Ground (Composition Unspecified), MGU
- Worked Ground (Undivided) - Void, WGU
- Superficial Geology
- ALF-XVSZC, Alluvial Fan Deposits
- ALRT-XVSZC, Alluvium and River Terrace Deposits (Undifferentiated)
- ALV-XCZSV, Alluvium
- ARDS-XSZ, Ardersier Silts Formation
- BROCK, Bedrock at or near surface
- FINT-DMTN, Finglack Till Formation
- GFDD-XVSZ, Glaciofluvial Deltaic Deposits
- GFDU-XVSZ, Glaciofluvial Deposits
- GFIC-XSV, Glaciofluvial Ice Contact Deposits
- GFIC-XVSZ, Glaciofluvial Ice Contact Deposits
- GFSD-XSV, Glaciofluvial Sheet Deposits
- GFSD-XVSZ, Glaciofluvial Sheet Deposits
- GFUSU-V, Glaciofluvial Sub-Glacial Deposits
- GFTD-XSV, Glaciofluvial Terrace Deposits
- GLLD-XCZS, Glaciolacustrine Deposits
- GRHS-XSZC, Grange Hill Sand Formation
- HMGD-XDSV, Hummocky (Moundy) Glacial Deposits
- LDE-XCZS, Lacustrine
- LDE-XCZS, Lacustrine Deposits
- PEAT-P, Peat
- RMBDD-XVSZ, Raised Marine Beach Deposits
- RMD, Raised Marine Deposits
- RMD1-XSV, Raised Marine Deposits
- RMD2-XSV, Raised Marine Deposits
- RTDU-XVSZ, River Terrace Deposits (Undifferentiated)
- SUPNM-WATR, Superficial Theme Not Recorded
- TILLD-DMTN, Till Devensian

0 500 1,000 Metres

CO1	27/11/2018	Approved as Stage Complete	JB	SR
Rev.	Rev. Date	Drawing Suitability	Drawn	Appr'd

Mott MacDonald Sweco

Client

A96 DUALING
HARDMUIR TO FOCHABERS

Project

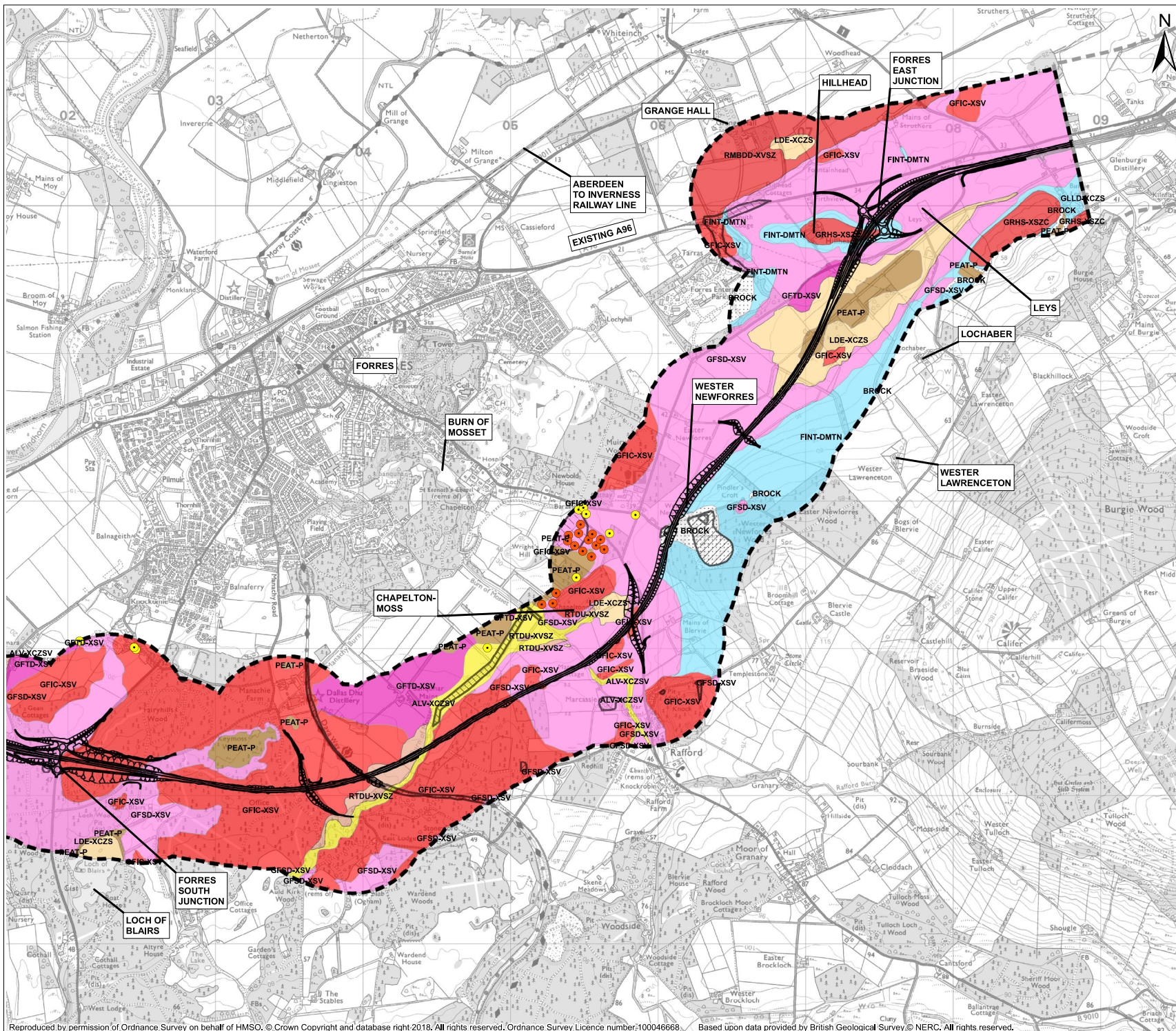
A96 DUALING
HARDMUIR TO FOCHABERS

Drawing Title

FIGURE 5.9 HARDMUIR TO HILLHEAD
SOUTH OPTION SUPERFICIAL GEOLOGY
SHEET 1 OF 2

Scale @ A3	1:25,000	DO NOT SCALE
Project No.	117880	Status
BIM No.	A96PHF-MMS-EGT-00000-DR-GE-00003	

This drawing should not be relied on or used in circumstances other than those for which it was originally prepared and for which the Mott MacDonald Sweco (MMS) Joint Venture was commissioned. MMS accepts no responsibility for this drawing to any party other than the person by whom it was commissioned. Any party which breaches the provisions of this disclaimer shall indemnify MMS for all loss or damage arising therefrom.



Legend

- Route option
- 500m Buffer
- Borehole - The Moray Council
- Borehole - British Geological Survey

Artificial Deposits - Superficial

- Infilled Ground - Made Ground (Composition Unspecified), IG
- Landscaped Ground (Undivided) - Unknown Lithology, LGU
- Made Ground (Undivided) - Made Ground (Composition Unspecified), MGU
- Worked Ground (Undivided) - Void, WGU

Superficial Geology

- ALF-XVSZC, Alluvial Fan Deposits
- ALRT-XVSZC, Alluvium and River Terrace Deposits (Undifferentiated)
- ALV-XCZSV, Alluvium
- ARDS-XSZ, Ardersier Silts Formation
- BROCK, Bedrock at or near surface
- FINT-DMTN, Flnglack Till Formation
- GFDD-XVSZ, Glaciofluvial Deltaic Deposits
- GFDU-XVSZ, Glaciofluvial Deposits
- GFIC-XSV, Glaciofluvial Ice Contact Deposits
- GFIC-XVSZ, Glaciofluvial Ice Contact Deposits
- GFSD-XSV, Glaciofluvial Sheet Deposits
- GFSD-XVSZ, Glaciofluvial Sheet Deposits
- GFSU-V, Glaciofluvial Sub-Glacial Deposits
- GFTD-XSV, Glaciofluvial Terrace Deposits
- GLLD-XCZS, Glaciolacustrine Deposits
- GRHS-XSZC, Grange Hill Sand Formation
- HMGD-XDSV, Hummocky (Moundy) Glacial Deposits
- LDE-XCZS, Lacustrine
- LDE-XCZS, Lacustrine Deposits
- PEAT-P, Peat
- RMBDD-XVSZ, Raised Marine Beach Deposits
- RMD, Raised Marine Deposits
- RMD1-XSV, Raised Marine Deposits
- RMD2-XSV, Raised Marine Deposits
- RTDU-XVSZ, River Terrace Deposits (Undifferentiated)
- SUPNM-WATR, Superficial Theme Not Recorded
- TILLD-DMTN, Till Devensian

0 500 1,000 Metres

C01	27/11/2018	Approved as Stage Complete	JB	SR
Rev.	Rev. Date	Drawing Suitability	Drawn	Appr'd

Mott MacDonald Sweco

Client

Project

**A96 DUALLING
HARDMUIR TO FOCHABERS**

Drawing Title

**FIGURE 5.10 HARDMUIR TO HILLHEAD
SOUTH OPTION SUPERFICIAL GEOLOGY
SHEET 2 OF 2**

Scale @ A3	1:25,000	DO NOT SCALE
Project No.	117880	Status
BIM No.	A96PHF-MMS-EGT-00000-DR-GE-00004	A2

This drawing should not be relied on or used in circumstances other than those for which it was originally prepared and for which the Mott MacDonald Sweco (MMS) Joint Venture was commissioned. MMS accepts no responsibility for this drawing to any party other than the person by whom it was commissioned. Any party which breaches the provisions of this disclaimer shall indemnify MMS for all loss or damage arising therefrom.