

Proposed Scheme
 NVC Survey Area
 No Surveyor Access

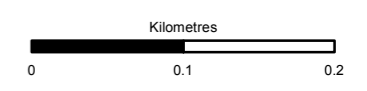
Ground Water Dependent Terrestrial Ecosystem (GWDE)

- Highly Dominant
- Highly Sub-dominant
- Moderately Dominant
- Moderately Sub-dominant

GWDE Target Note

- TN_1 Highly Dependent

NVC Habitat Codes are displayed in this Figure. Details regarding these can be found in Appendix A12.2



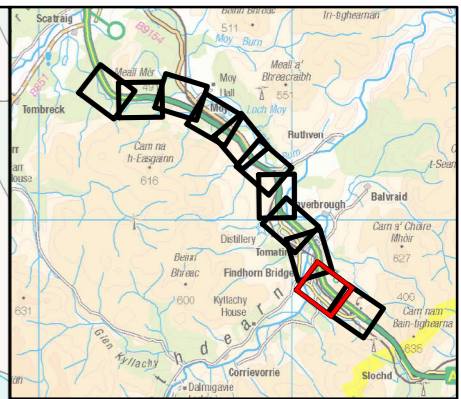
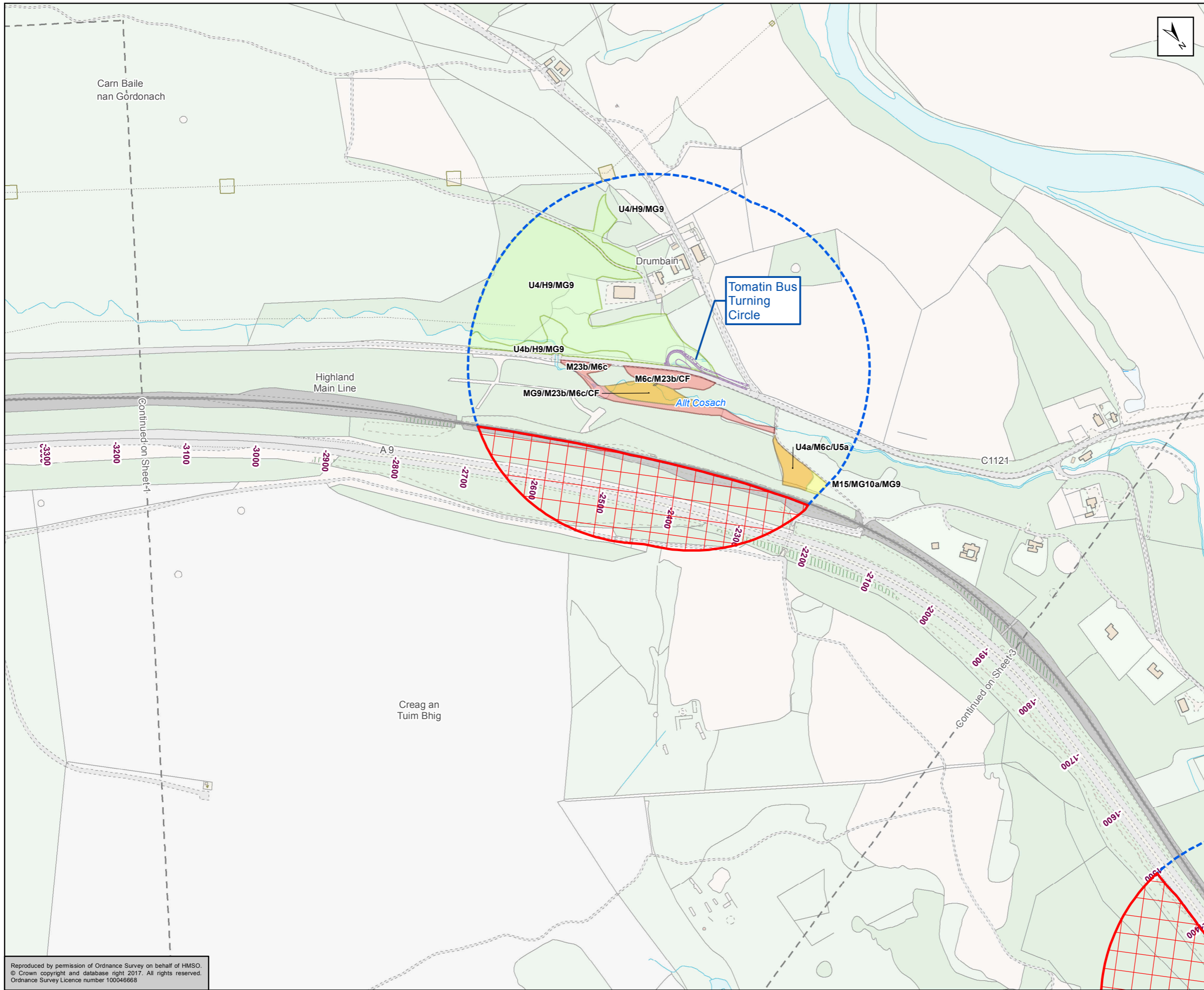
Status	FINAL	Subsidiary	B
--------	-------	------------	---



Figure 12.4a
 Potential Ground Water Dependent Terrestrial Ecosystems
 Sheet 1 of 11

Scale	1:5,000	Drawn	RM	Checked	SK	Approved	RM	Authorised	SB		
Document Number	A9P12-AMJ-EBD-Z_ZZZZZ_XX-DR-GI-0024							Revision	P03		
Project	Originator		Volume		Location				Type	Role	Number

Reproduced by permission of Ordnance Survey on behalf of HMSO.
 © Crown copyright and database right 2017. All rights reserved.
 Ordnance Survey Licence number 100046668



Proposed Scheme

NVC Survey Area

No Surveyor Access

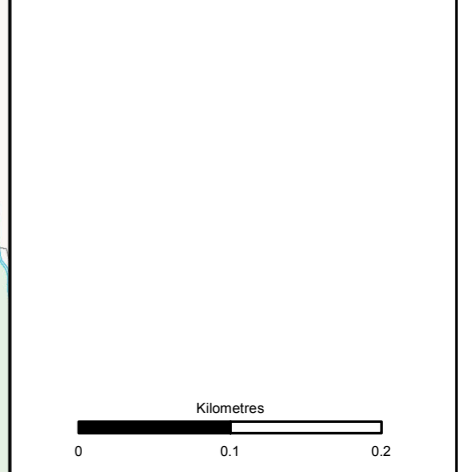
Ground Water Dependent Terrestrial Ecosystem (GWDE)

- Highly Dominant
- Highly Sub-dominant
- Moderately Dominant
- Moderately Sub-dominant

GWDE Target Note

● TN₁ Highly Dependent

NVC Habitat Codes are displayed in this Figure. Details regarding these can be found in Appendix A12.2



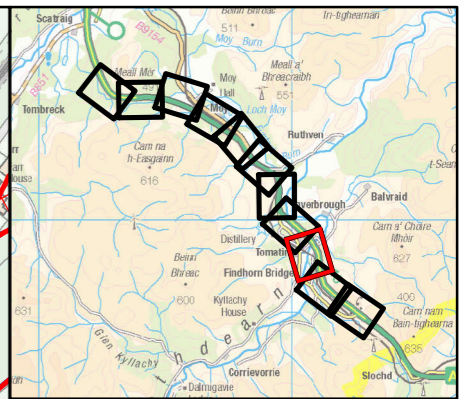
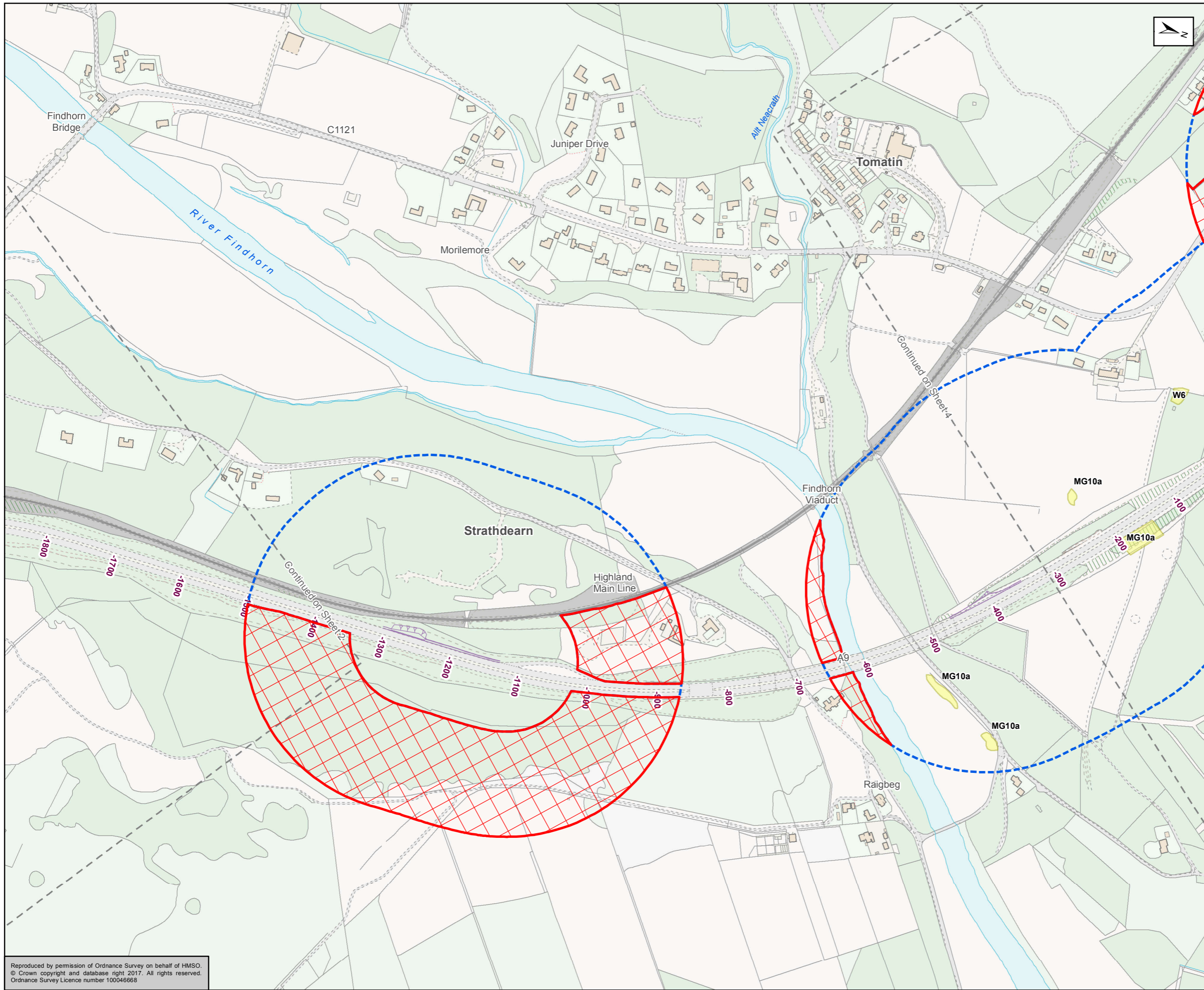
Status	FINAL	Subsidiary	B
--------	-------	------------	---



Figure 12.4b
Potential Ground Water Dependent Terrestrial Ecosystems
Sheet 2 of 11

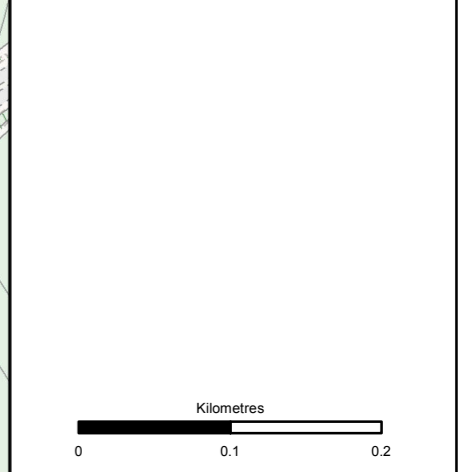
Scale	1:5,000	Drawn	RM	Checked	SK	Approved	RM	Authorised	SB
Document Number	A9P12-AMJ-EBD-Z_ZZZZZ_XX-DR-GI-0025							Revision	P02
Project	Originator	Volume							
Location	Type	Role	Number						

Reproduced by permission of Ordnance Survey on behalf of HMSO.
© Crown copyright and database right 2017. All rights reserved.
Ordnance Survey Licence number 100046668



Proposed Scheme
 NVC Survey Area
 No Surveyor Access
Ground Water Dependent Terrestrial Ecosystem (GWDE)
 Highly Dominant
 Highly Sub-dominant
 Moderately Dominant
 Moderately Sub-dominant
GWDE Target Note
 ● TN_1 Highly Dependent

 NVC Habitat Codes are displayed in this Figure. Details regarding these can be found in Appendix A12.2



Status: FINAL Submittal: B

Client: **TRANSPORT SCOTLAND**
COMHDHAIL ALBA

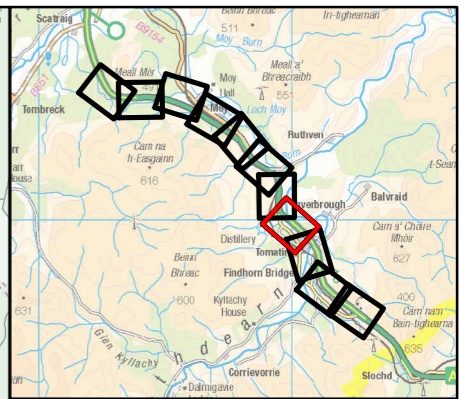
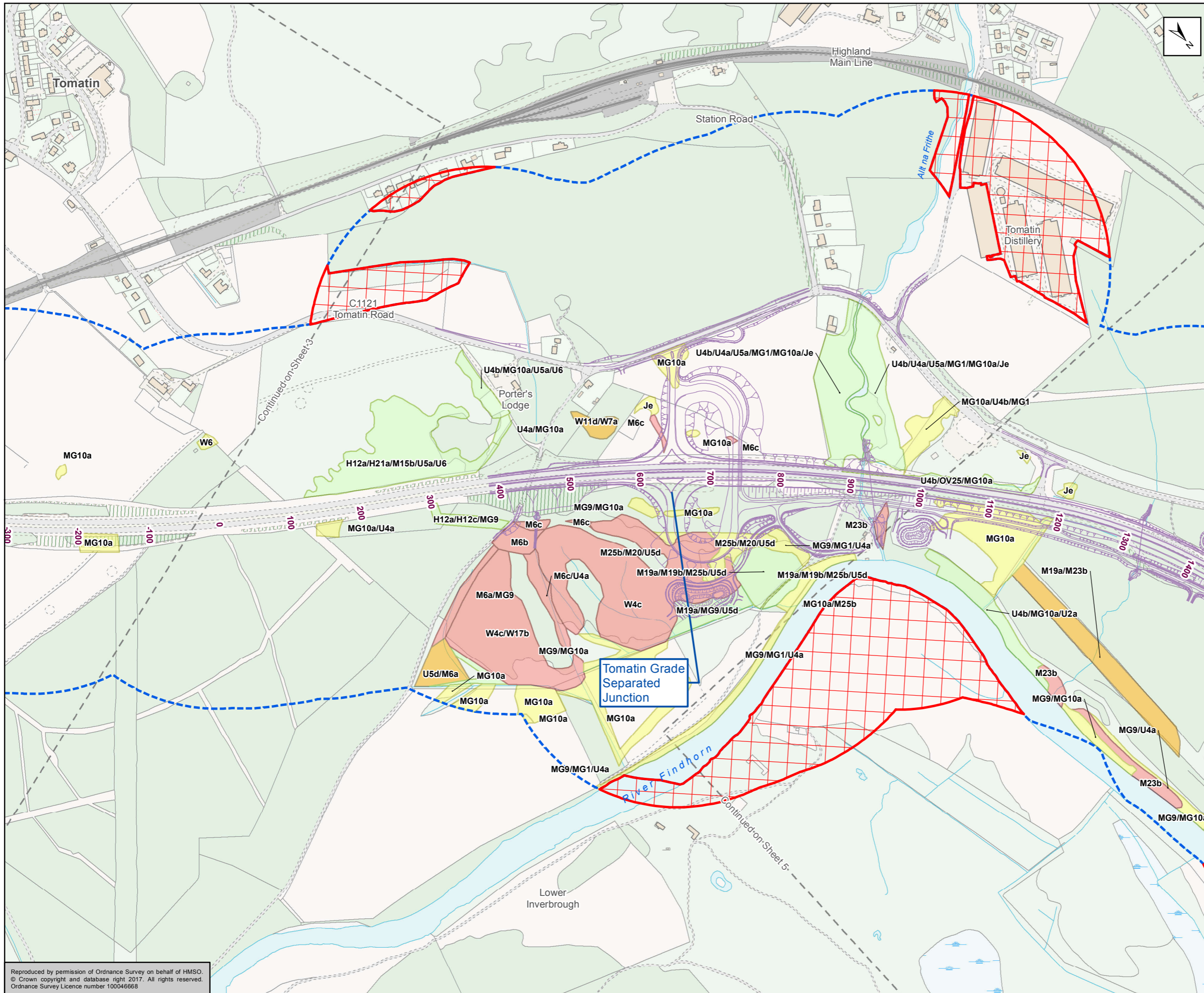
A9
DUALLING
PERTH TO INVERNESS
Tomatin to Moy

ATKINS mouchel

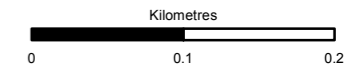
Figure 12.4c
Potential Ground Water Dependent Terrestrial Ecosystems
Sheet 3 of 11

Scale	1:5,000	Drawn	RM	Checked	SK	Approved	RM	Authorised	SB
Document Number	A9P12-AMJ-EBD-Z_ZZZZZ_XX-DR-GI-0026							Revision	P02
Project	Originator	Volume							
Location	Type	Role	Number						

Reproduced by permission of Ordnance Survey on behalf of HMSO. © Crown copyright and database right 2017. All rights reserved. Ordnance Survey Licence number 100046668



Proposed Scheme
 NVC Survey Area
 No Surveyor Access
Ground Water Dependent Terrestrial Ecosystem (GWDE)
 Highly Dominant
 Highly Sub-dominant
 Moderately Dominant
 Moderately Sub-dominant
GWDE Target Note
 TN_1 Highly Dependent
 NVC Habitat Codes are displayed in this Figure. Details regarding these can be found in Appendix A12.2



Status: FINAL Sub-study: B

Client: **TRANSPORT SCOTLAND**
COMHDHAIL ALBA

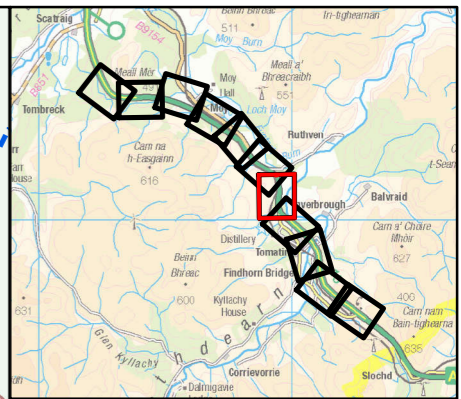
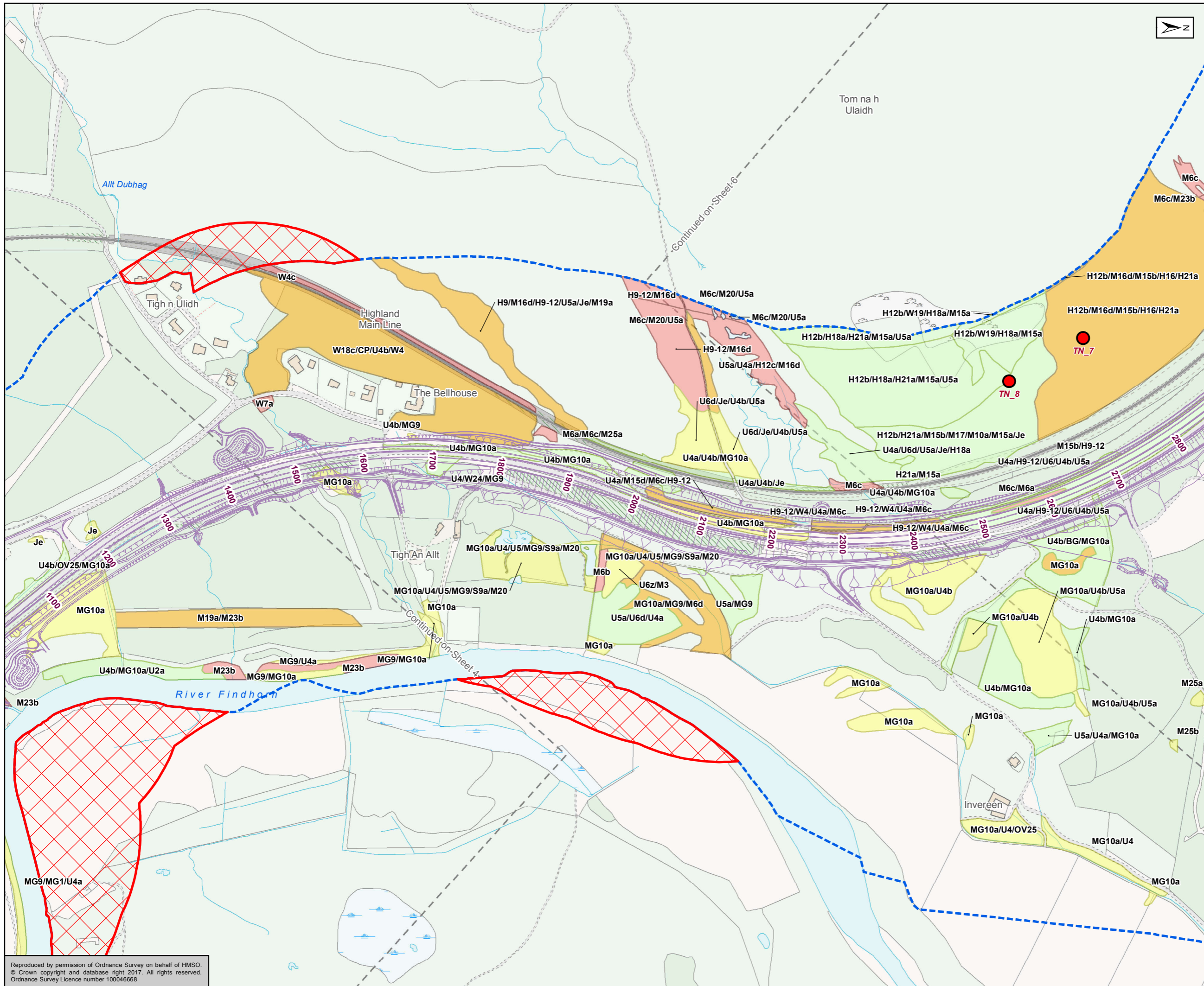
A9
DUALING
PERTH TO INVERNESS
Tomatin to Moy

ATKINS mouchel

Figure 12.4d
Potential Ground Water Dependent Terrestrial Ecosystems
Sheet 4 of 11

Scale	1:5,000	Drawn	RM	Checked	SK	Approved	RM	Authorised	SB	
Document Number	A9P12-AMJ-EBD-Z_ZZZZZ_XX-DR-GI-0027								Revision	P02
Project	Originator	Volume								
Location	Type	Role	Number							

Reproduced by permission of Ordnance Survey on behalf of HMSO. © Crown copyright and database right 2017. All rights reserved. Ordnance Survey Licence number 100046668



Proposed Scheme
 NVC Survey Area
 No Surveyor Access

Ground Water Dependent Terrestrial Ecosystem (GWDE)
 Highly Dominant
 Highly Sub-dominant
 Moderately Dominant
 Moderately Sub-dominant

GWDE Target Note
 TN_1 Highly Dependent

NVC Habitat Codes are displayed in this Figure. Details regarding these can be found in Appendix A12.2

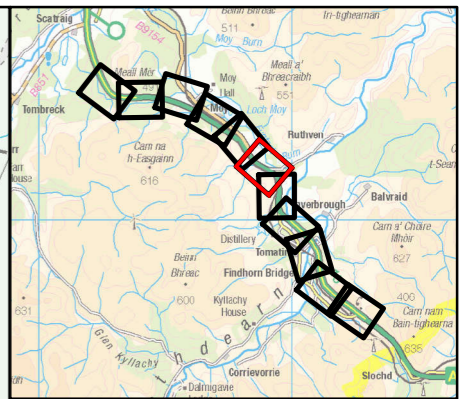
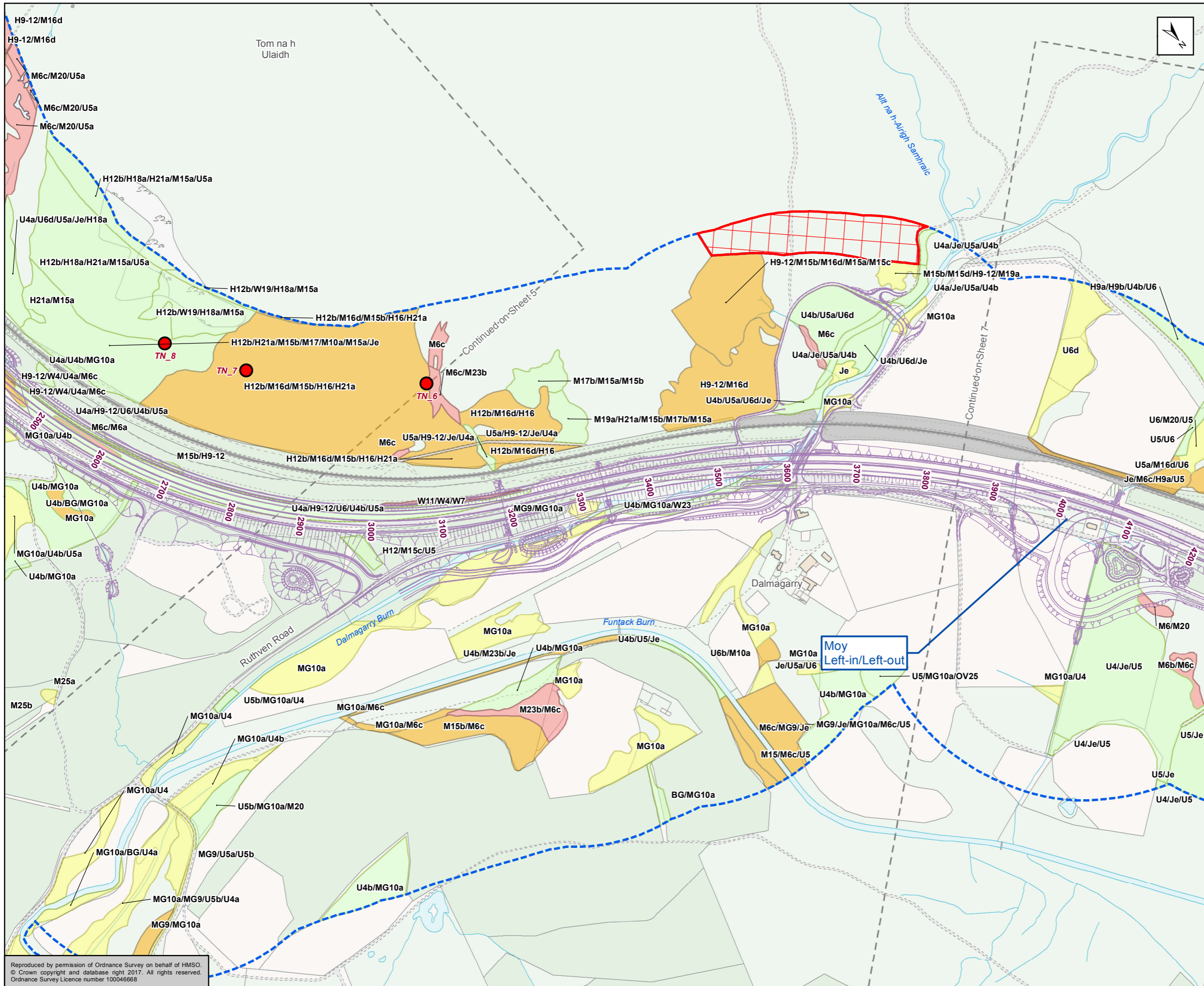
Kilometres
 0 0.1 0.2

Status	FINAL	Subsidiary	B
Client			

Figure 12.4e
 Potential Ground Water Dependent Terrestrial Ecosystems
 Sheet 5 of 11

Scale	1:5,000	Drawn	RM	Checked	SK	Approved	RM	Authorised	SB	
Document Number	A9P12-AMJ-EBD-Z_ZZZZZ_XX-DR-GI-0028								Revision	P02
Project	A9P12-AMJ-EBD-Z_ZZZZZ_XX-DR-GI-0028		Originator			Volume				
Location	Type	Role	Number							

Reproduced by permission of Ordnance Survey on behalf of HMSO.
 © Crown copyright and database right 2017. All rights reserved.
 Ordnance Survey Licence number 100046668



Proposed Scheme
 NVC Survey Area
 No Surveyor Access

Ground Water Dependent Terrestrial Ecosystem (GWDTE)

- Highly Dominant
- Highly Sub-dominant
- Moderately Dominant
- Moderately Sub-dominant

GWDTE Target Note

- TN_1 Highly Dependent

NVC Habitat Codes are displayed in this Figure. Details regarding these can be found in Appendix A12.2

Kilometres
 0 0.1 0.2

Status: FINAL
 Substudy: B

Client: **TRANSPORT SCOTLAND**
 COMHDHAIL ALBA

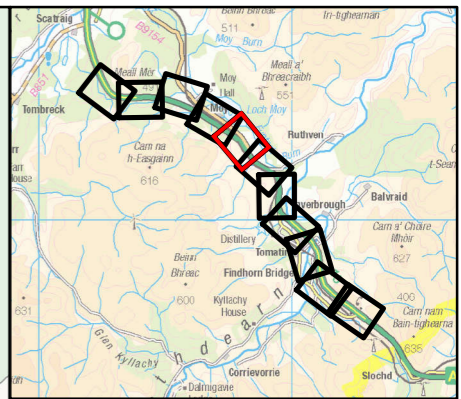
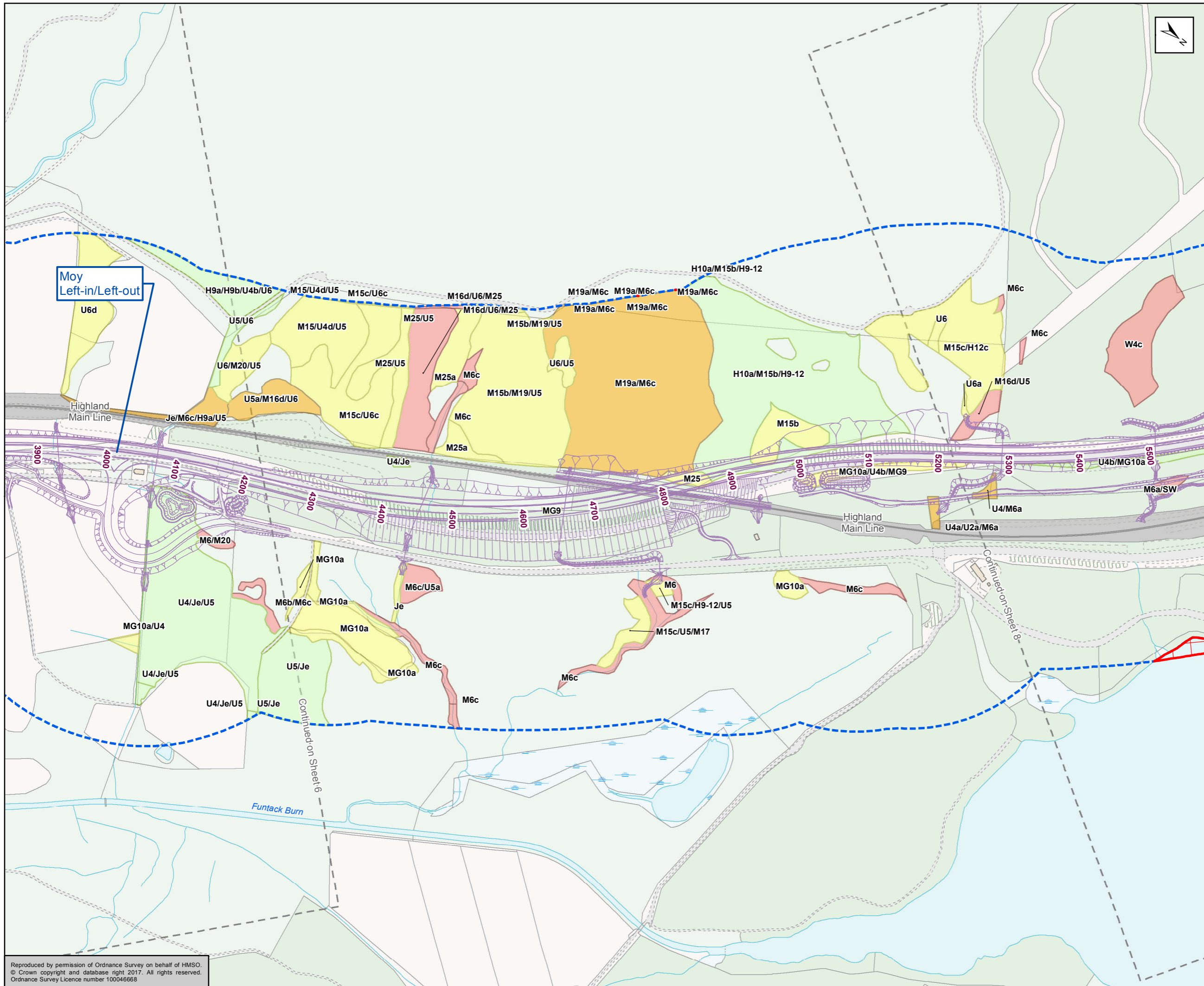
A9 DUALING
 PERTH TO INVERNESS
 Tomatin to Moy

ATKINS mouchel

Figure 12.4f
 Potential Ground Water Dependent Terrestrial Ecosystems
 Sheet 6 of 11

Scale: 1:5,000	Draw: RM	Checked: SK	Approved: RM	Authorised: SB
Document Number: A9P12-AMJ-EBD-Z_ZZZZZ_XX-DR-GI-0029	Project: A9P12-AMJ-EBD-Z_ZZZZZ_XX-DR-GI-0029	Originator: [Blank]	Volume: [Blank]	Revision: P02
Location: [Blank]	Type: [Blank]	Role: [Blank]	Number: [Blank]	[Blank]

Reproduced by permission of Ordnance Survey on behalf of HMSO. © Crown copyright and database right 2017. All rights reserved. Ordnance Survey Licence number 100046668



Proposed Scheme
 NVC Survey Area
 No Surveyor Access

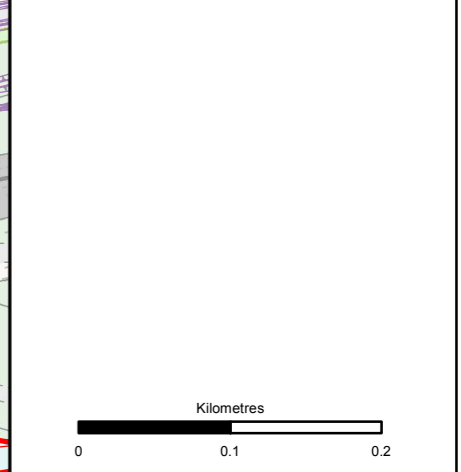
Ground Water Dependent Terrestrial Ecosystem (GWLTE)

- Highly Dominant
- Highly Sub-dominant
- Moderately Dominant
- Moderately Sub-dominant

GWLTE Target Note

- TN_1 Highly Dependent

NVC Habitat Codes are displayed in this Figure. Details regarding these can be found in Appendix A12.2



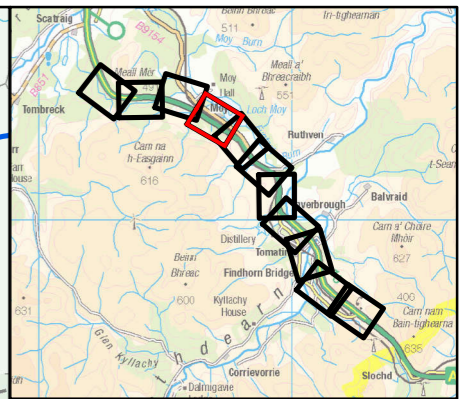
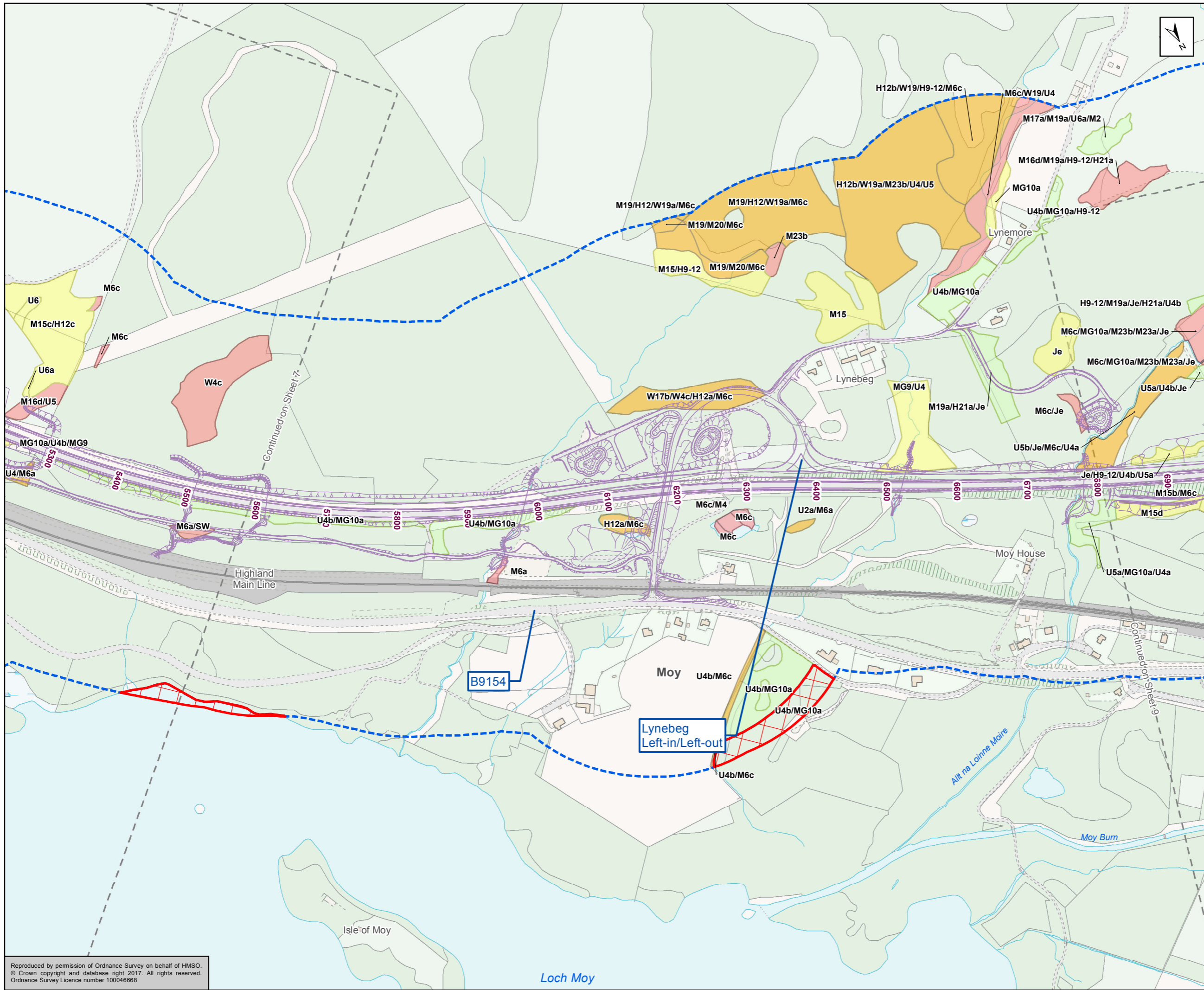
Status	FINAL	Subsidiary	B
--------	-------	------------	---



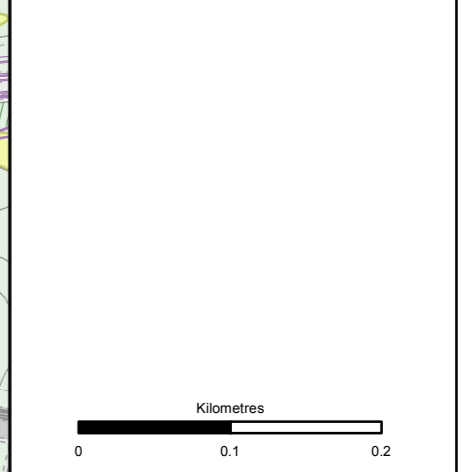
Figure 12.4g
 Potential Ground Water Dependent Terrestrial Ecosystems
 Sheet 7 of 11

Scale	1:5,000	Drawn	RM	Checked	SK	Approved	RM	Authorised	SB
Document Number	A9P12-AMJ-EBD-Z_ZZZZZ_XX-DR-GI-0030							Revision	P02
Project	Originator	Volume							
Location	Type	Role	Number						

Reproduced by permission of Ordnance Survey on behalf of HMSO.
 © Crown copyright and database right 2017. All rights reserved.
 Ordnance Survey Licence number 100046668



Proposed Scheme
 NVC Survey Area
 No Surveyor Access
Ground Water Dependent Terrestrial Ecosystem (GWDT)
 Highly Dominant
 Highly Sub-dominant
 Moderately Dominant
 Moderately Sub-dominant
GWDT Target Note
 TN_1 Highly Dependent
 NVC Habitat Codes are displayed in this Figure. Details regarding these can be found in Appendix A12.2



Status	FINAL	Subsidiary	B
--------	-------	------------	---

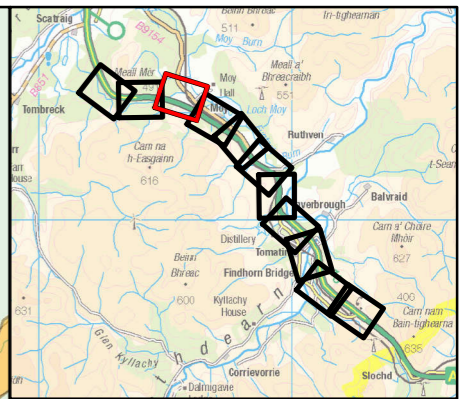
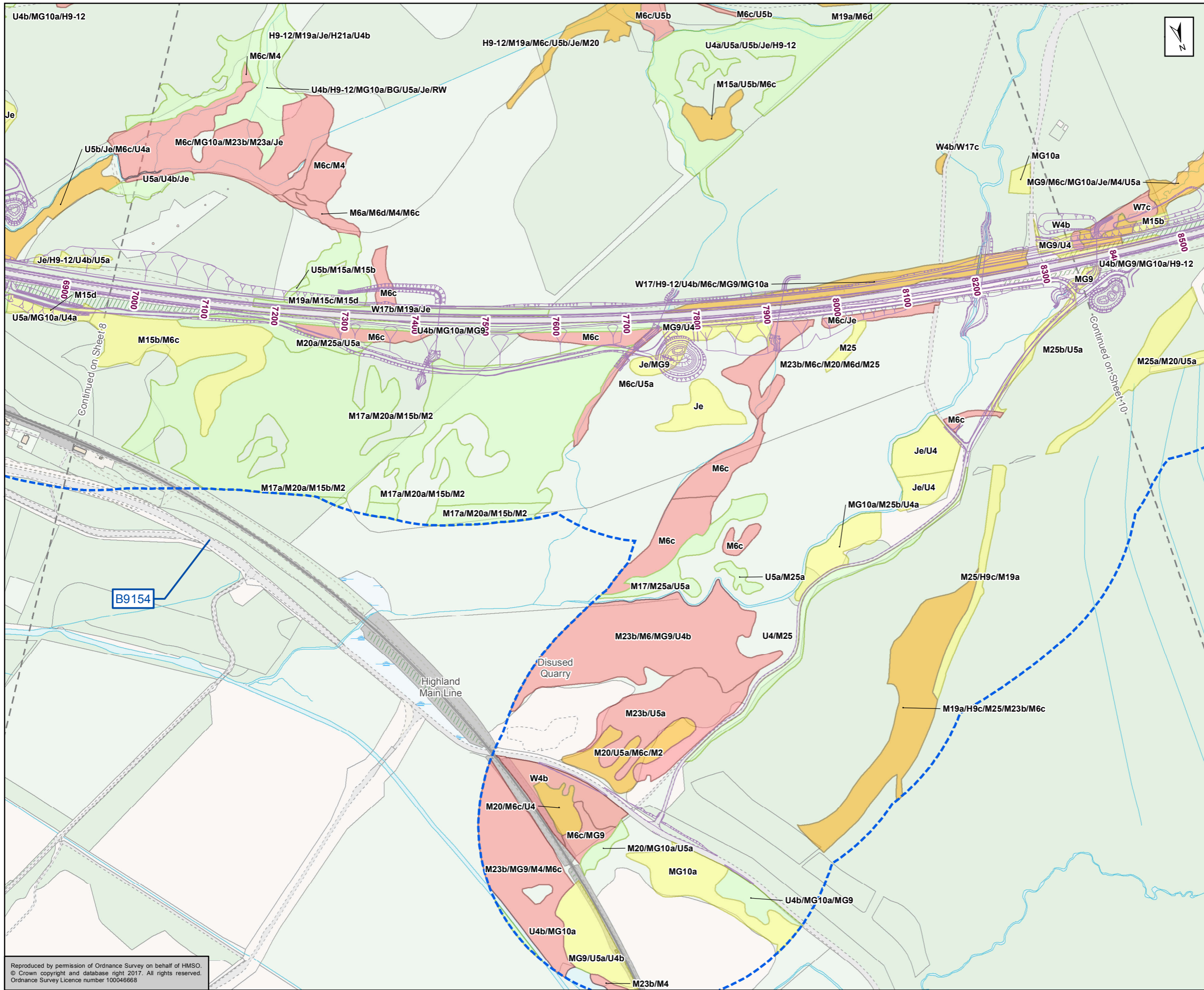


Figure 12.4h
Potential Ground Water Dependent Terrestrial Ecosystems
Sheet 8 of 11

Scale	1:5,000	Drawn	RM	Checked	SK	Approved	RM	Authorised	SB		
Document Number	A9P12-AMJ-EBD-Z_ZZZZZ_XX-DR-GI-0031							Revision	P02		
Project	Originator		Volume		Location				Type	Role	Number

Reproduced by permission of Ordnance Survey on behalf of HMSO. © Crown copyright and database right 2017. All rights reserved. Ordnance Survey Licence number 100046668

Loch Moy



Proposed Scheme
 NVC Survey Area
 No Surveyor Access

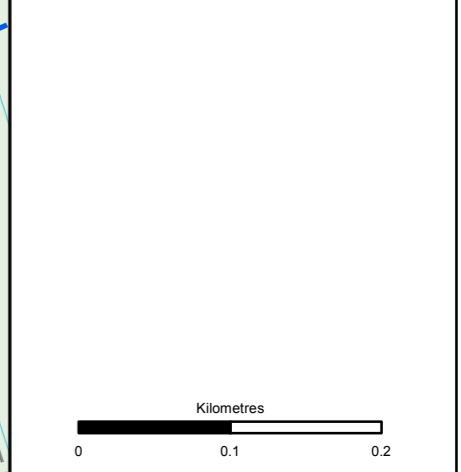
Ground Water Dependent Terrestrial Ecosystem (GWDE)

- Highly Dominant
- Highly Sub-dominant
- Moderately Dominant
- Moderately Sub-dominant

GWDE Target Note

- TN_1 Highly Dependent

NVC Habitat Codes are displayed in this Figure. Details regarding these can be found in Appendix A12.2



Status: FINAL
 Subtitle: B

Client: **TRANSPORT SCOTLAND**
 COMHDAIL ALBA

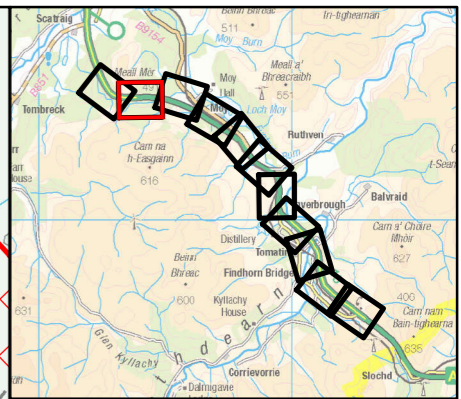
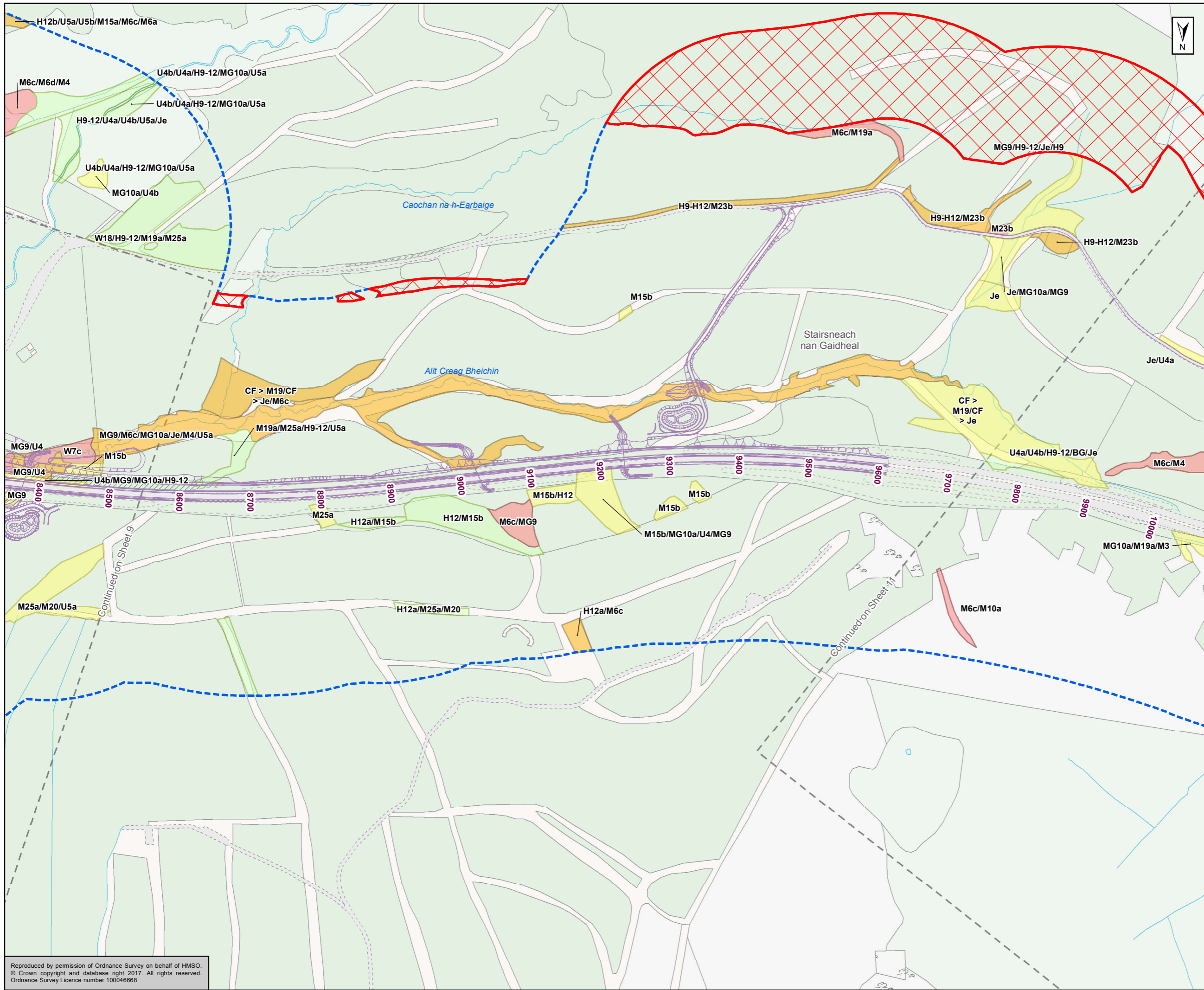
A9
DUALING
 PERTH TO INVERNESS
 Tomatin to Moy

ATKINS mouchel

Figure 12.4i
 Potential Ground Water Dependent Terrestrial Ecosystems
 Sheet 9 of 11

Scale	1:5,000	Drawn	RM	Checked	SK	Approved	RM	Authorised	SB
Document Number	A9P12-AMJ-EBD-Z_ZZZZZ_XX-DR-GI-0032							Revision	P02
Project	Originator	Volume							
Location	Type	Role	Number						

Reproduced by permission of Ordnance Survey on behalf of HMSO.
 © Crown copyright and database right 2017. All rights reserved.
 Ordnance Survey Licence number 100046668



Proposed Scheme
 NVC Survey Area
 No Surveyor Access
Ground Water Dependent Terrestrial Ecosystem (GWDE)
 Highly Dominant
 Highly Sub-dominant
 Moderately Dominant
 Moderately Sub-dominant
GWDE Target Note
 TN_1 Highly Dependent
 NVC Habitat Codes are displayed in this Figure. Details regarding these can be found in Appendix A12.2

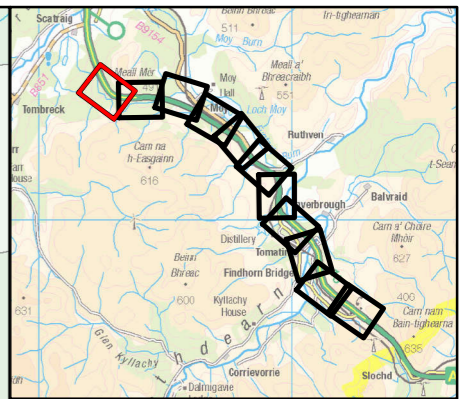
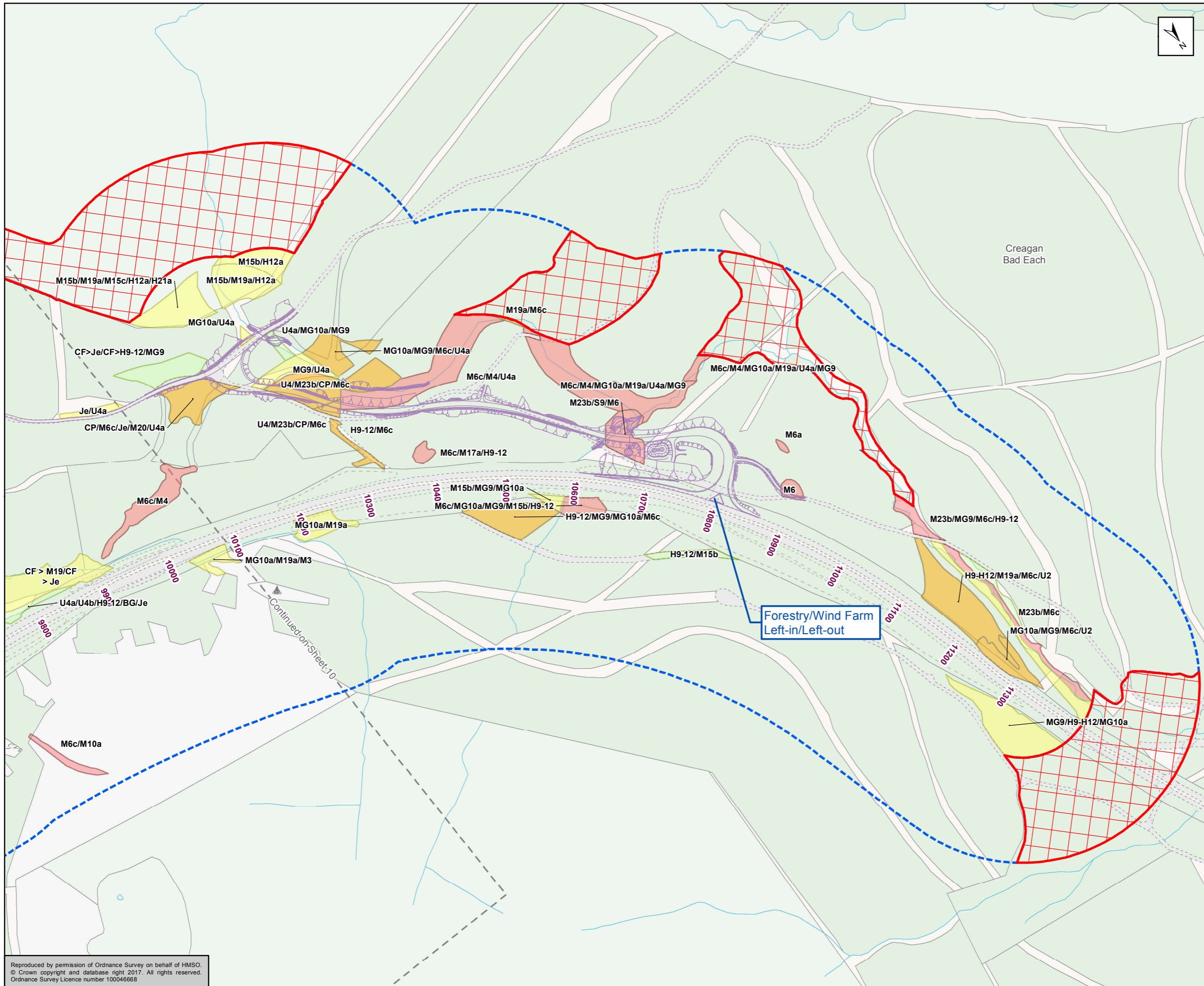
Status: FINAL
 Substudy: B



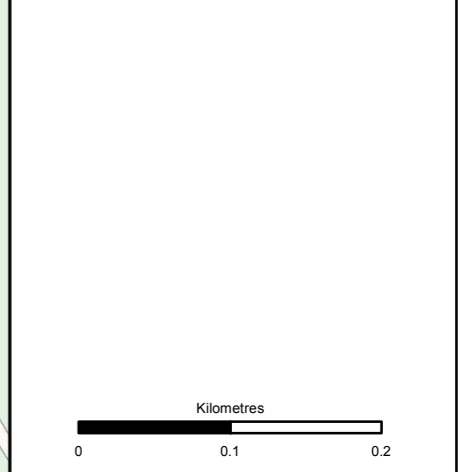
Figure 12.4j
 Potential Ground Water Dependent Terrestrial Ecosystems
 Sheet 10 of 11

Scale	1:5,000	Drawn	RM	Checked	SK	Approved	RM	Authorised	SB
Document Number	A9P12-AMJ-EBD-Z_ZZZZ_XX-DR-GI-0033							Revision	P02
Project	A9P12-AMJ-EBD-Z_ZZZZ_XX-DR-GI-0033							Location	
Originator								Type	
Volume								Role	
							Number		

Reproduced by permission of Ordnance Survey on behalf of HMSO.
 © Crown copyright and database right 2017. All rights reserved.
 Ordnance Survey Licence number 100046668



Proposed Scheme
 NVC Survey Area
 No Surveyor Access
Ground Water Dependent Terrestrial Ecosystem (GWDTE)
 Highly Dominant
 Highly Sub-dominant
 Moderately Dominant
 Moderately Sub-dominant
GWDTE Target Note
 TN_1 Highly Dependent
 NVC Habitat Codes are displayed in this Figure. Details regarding these can be found in Appendix A12.2



Status: FINAL
 Substrate: B

Client: **TRANSPORT SCOTLAND**
 COMHDHAIL ALBA



Atkins mouchel

Figure 12.4k
 Potential Ground Water Dependent Terrestrial Ecosystems
 Sheet 11 of 11

Scale	1:5,000	Drawn	RM	Checked	SK	Approved	RM	Authorised	SB
Document Number	A9P12-AMJ-EBD-Z_ZZZZZ_XX-DR-GI-0183							Revision	P01
Project	Originator	Volume							
Location	Type	Role							

Reproduced by permission of Ordnance Survey on behalf of HMSO.
 © Crown copyright and database right 2017. All rights reserved.
 Ordnance Survey Licence number 100046668