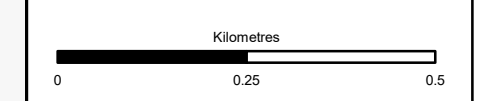


- Proposed Scheme
- Photo Locations
- Nature of view from existing A9
 - O - Open Views
 - I - Intermittent/Restricted Views
 - N - No View/Enclosed
- Priority View (Refer to SEA Strategic Landscape Review)
 - Direction of View
- View from Road Assessment (Refer to Section 9.4)
 - Direction of View



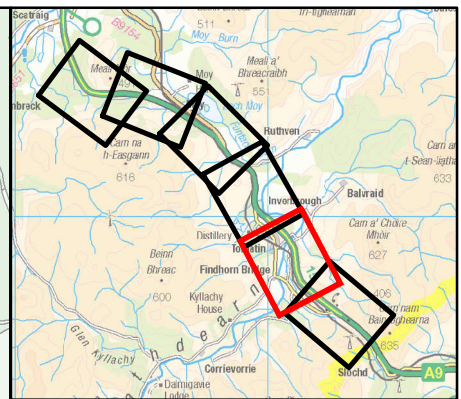
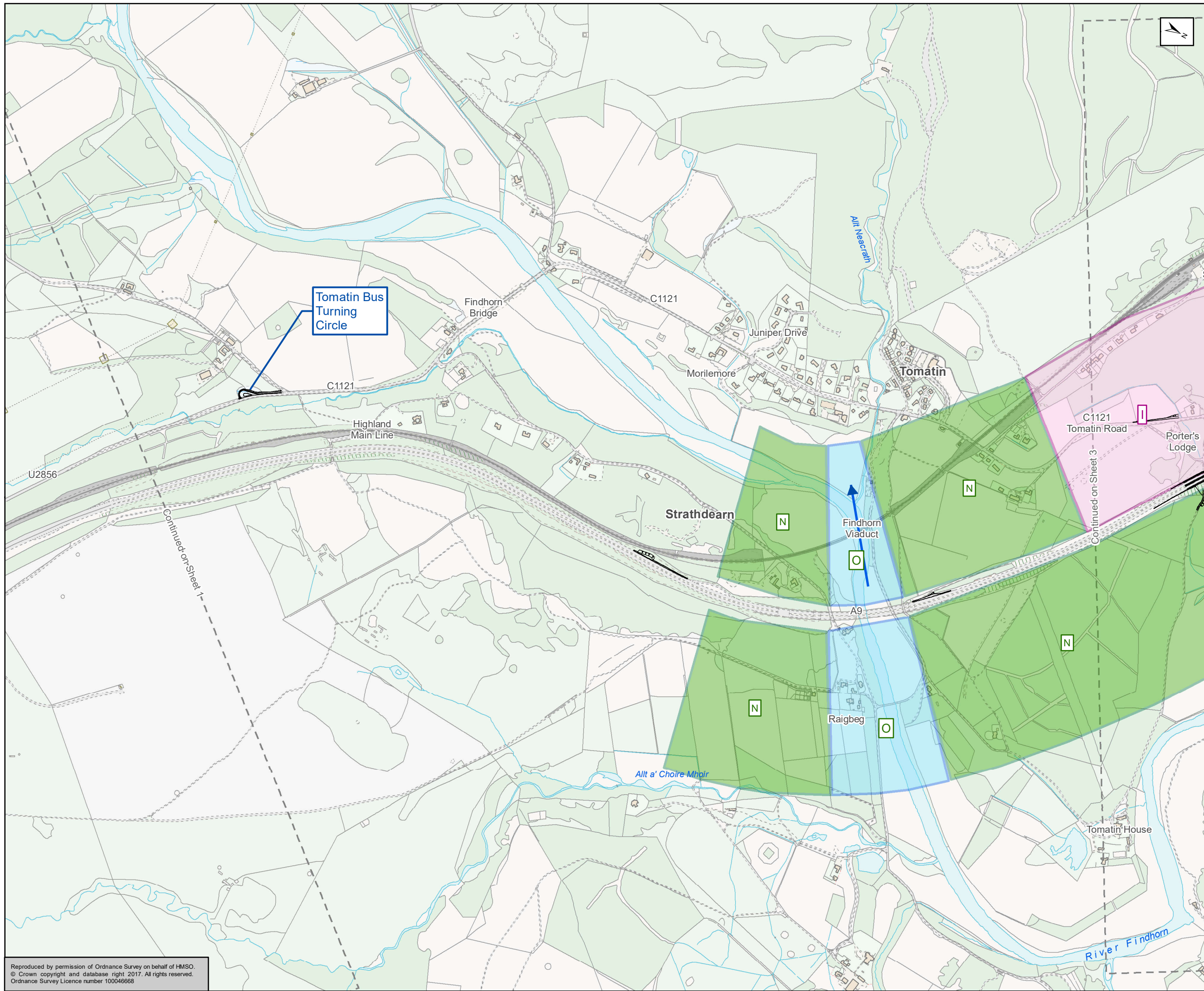
Status	FINAL	Subsidiary	B
--------	-------	------------	---



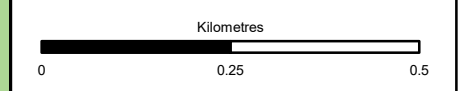
Figure 9.3a
A9 Mainline - View From The Road - Northbound Views
Sheet 1 of 6

Scale	1:10,000	Drawn	HAH	Checked	AW	Approved	RM	Authorised	SB
Document Number	A9P12-AMJ-ELS-Z_ZZZZZ_XX-DR-GI-0014							Revision	P02
Project	Originator	Volume							
Location	Type	Role	Number						

Reproduced by permission of Ordnance Survey on behalf of HMSO.
© Crown copyright and database right 2017. All rights reserved.
Ordnance Survey Licence number 100046668



- ~ Proposed Scheme
- Photo Locations
- Nature of view from existing A9
 - O - Open Views
 - I - Intermittent/Restricted Views
 - N - No View/Enclosed
- Priority View (Refer to SEA Strategic Landscape Review)
 - ➔ Direction of View
- View from Road Assessment (Refer to Section 9.4)
 - ➔ Direction of View



Status: FINAL Substudy: B

Client: **TRANSPORT SCOTLAND**
COMHDHAIL ALBA

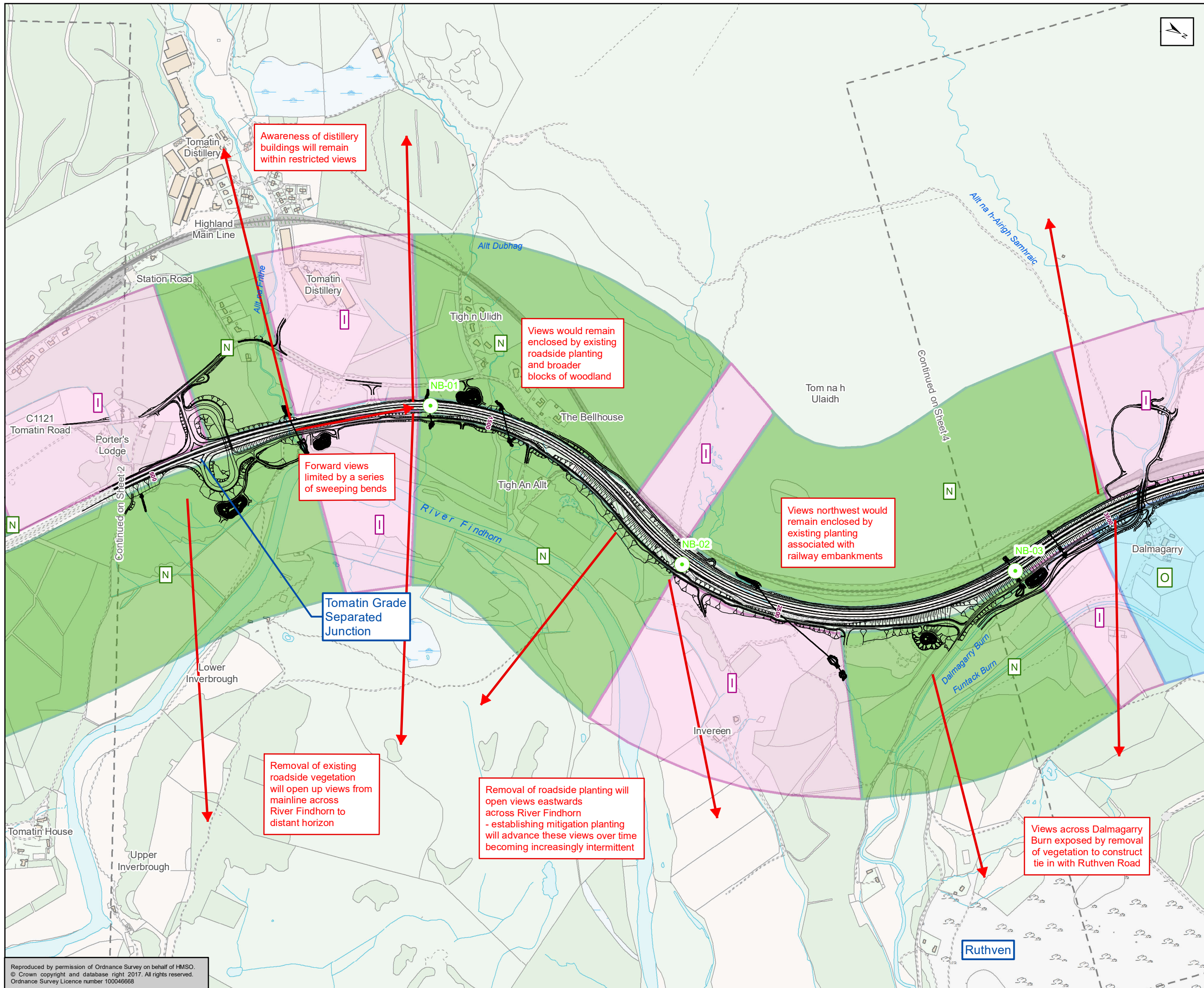
A9
DUALING
PERTH TO INVERNESS
Tomatin to Moy

ATKINS mouchel

Figure 9.3b
A9 Mainline - View From The Road - Northbound Views
Sheet 2 of 6

Scale: 1:10,000	Drawn: HAH	Checked: AW	Approved: RM	Authorised: SB
Document Number: A9P12-AMJ-ELS-Z_ZZZZZ_XX-DR-GI-0015	Project: A9P12-AMJ-ELS-Z_ZZZZZ_XX-DR-GI-0015	Originator: [Blank]	Volume: [Blank]	Revision: P02
Location: [Blank]	Type: [Blank]	Role: [Blank]	Number: [Blank]	[Blank]

Reproduced by permission of Ordnance Survey on behalf of HMSO.
© Crown copyright and database right 2017. All rights reserved.
Ordnance Survey Licence number 100046668



Awareness of distillery buildings will remain within restricted views

Views would remain enclosed by existing roadside planting and broader blocks of woodland

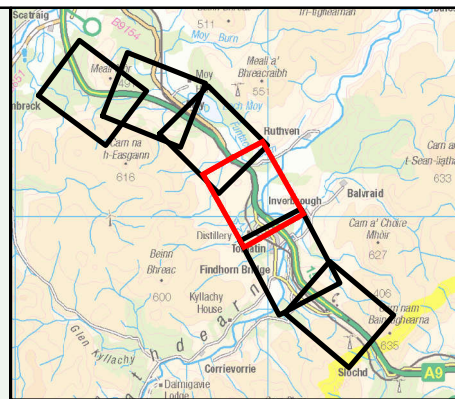
Forward views limited by a series of sweeping bends

Views northwest would remain enclosed by existing planting associated with railway embankments

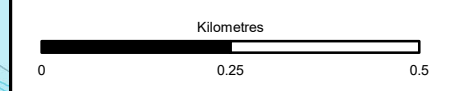
Removal of existing roadside vegetation will open up views from mainline across River Findhorn to distant horizon

Removal of roadside planting will open views eastwards across River Findhorn - establishing mitigation planting will advance these views over time becoming increasingly intermittent

Views across Dalmagarry Burn exposed by removal of vegetation to construct tie in with Ruthven Road



- ~ Proposed Scheme
- Photo Locations
- Nature of view from existing A9
 - O - Open Views
 - I - Intermittent/Restricted Views
 - N - No View/Enclosed
- Priority View (Refer to SEA Strategic Landscape Review)
 - ➔ Direction of View
- View from Road Assessment (Refer to Section 9.4)
 - ➔ Direction of View



FINAL B

TRANSPORT SCOTLAND
COMHDHAIL ALBA

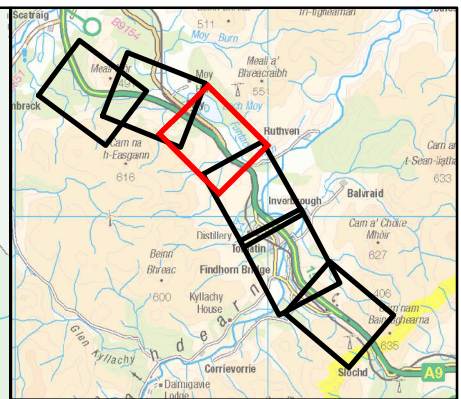
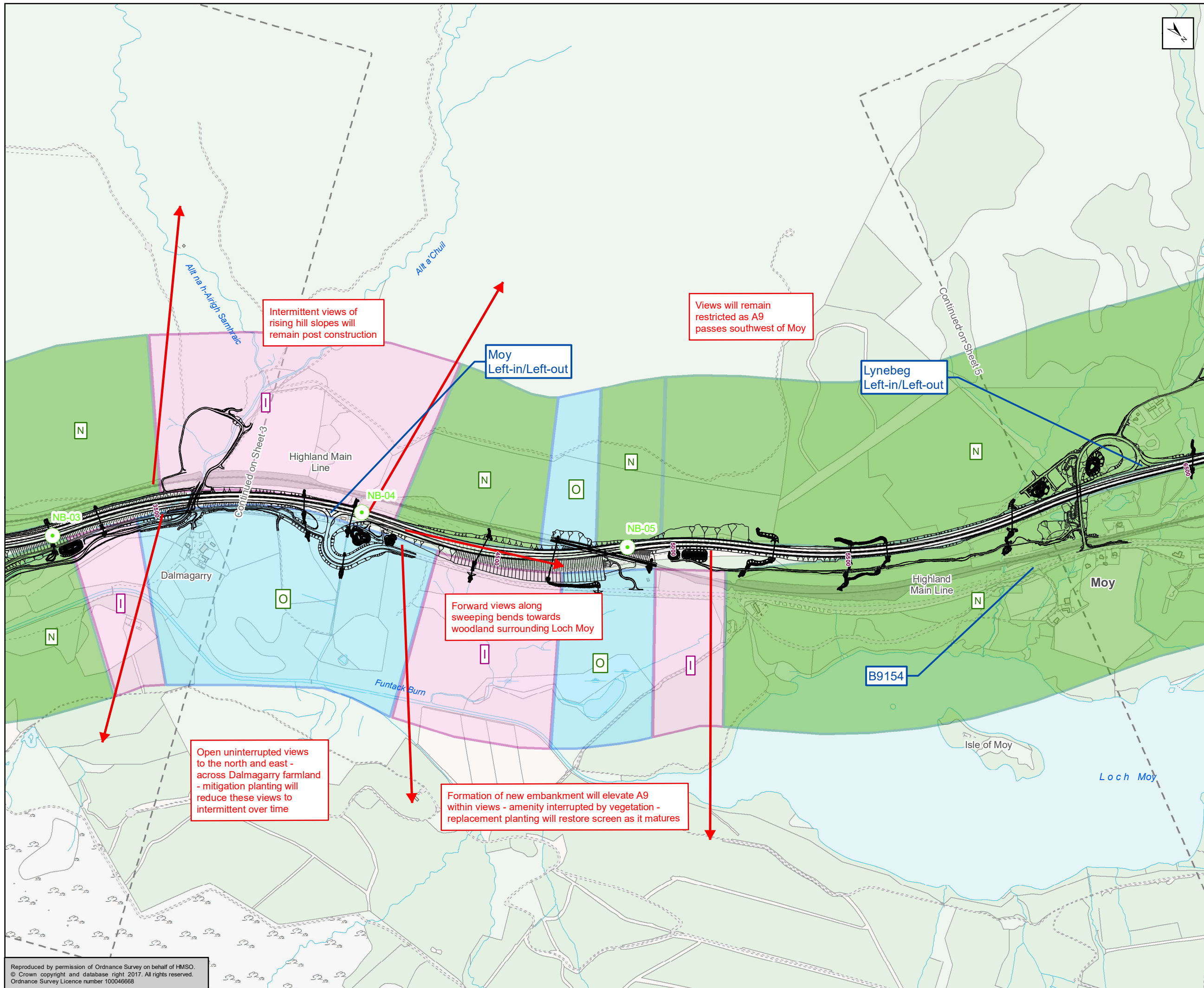
A9
DUALLING
PERTH TO INVERNESS
Tomatin to Moy

ATKINS mouchel

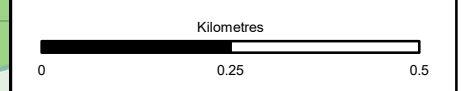
Figure 9.3c
A9 Mainline - View From The Road - Northbound Views
Sheet 3 of 6

Scale	1:10,000	Drawn	HAH	Checked	AW	Approved	RM	Authorised	SB	
Document Number	A9P12-AMJ-ELS-Z_ZZZZZ_XX-DR-GI-0016								Revision	P02
Project	Originator	Volume								
Location	Type	Role								

Reproduced by permission of Ordnance Survey on behalf of HMSO. © Crown copyright and database right 2017. All rights reserved. Ordnance Survey Licence number 100046668



- ~ Proposed Scheme
- Photo Locations
- Nature of view from existing A9
 - O - Open Views
 - I - Intermittent/Restricted Views
 - N - No View/Enclosed
- Priority View (Refer to SEA Strategic Landscape Review)
- ➔ Direction of View
- View from Road Assessment (Refer to Section 9.4)
- ➔ Direction of View



Status: FINAL
 Substage: B

Client: TRANSPORT SCOTLAND
 COMHDHAIL ALBA

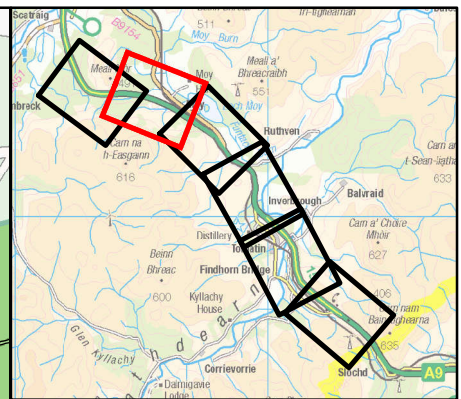
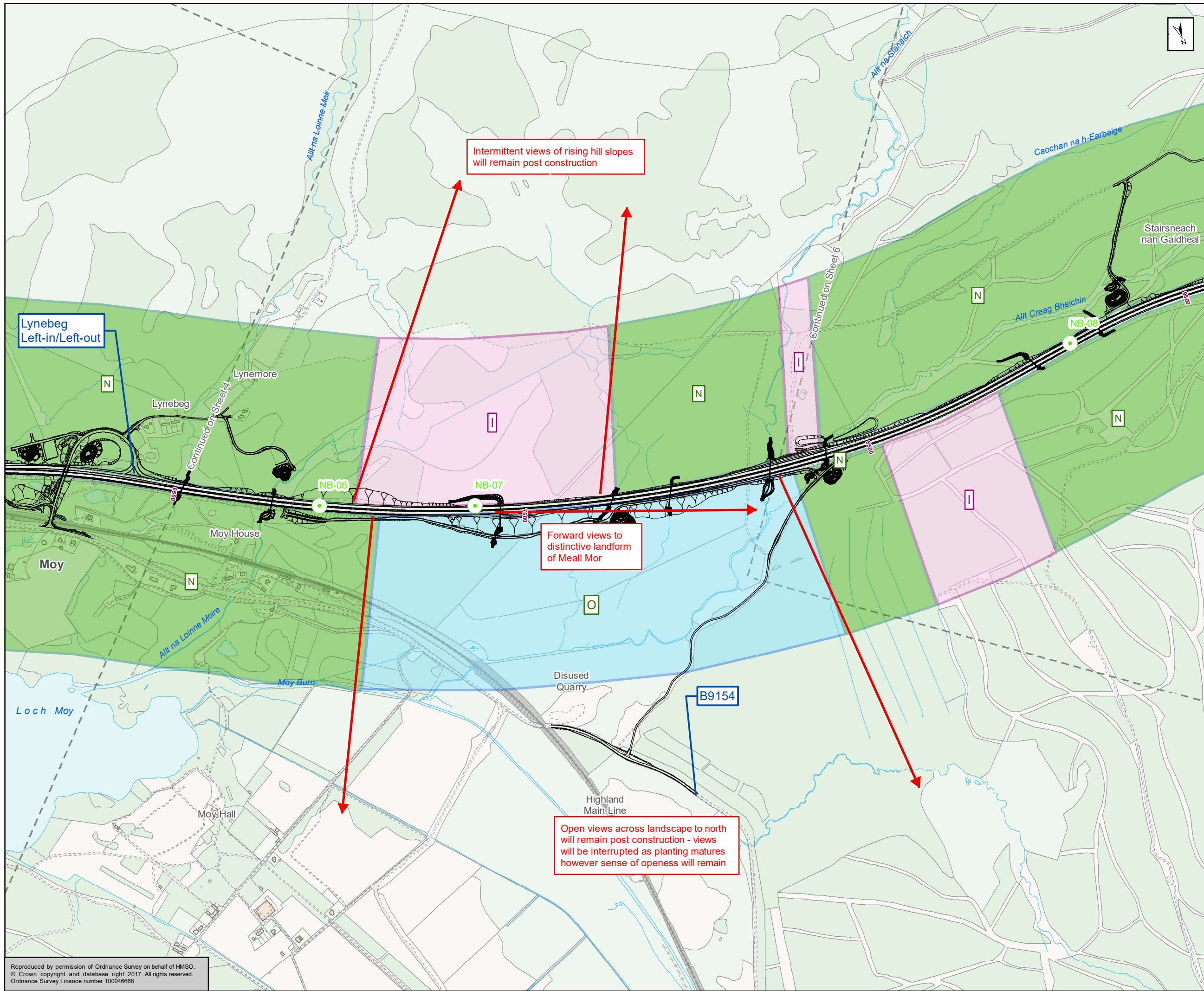


ATKINS mouchel

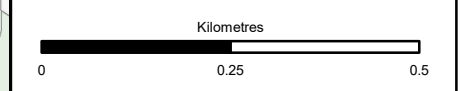
Figure 9.3d
 A9 Mainline - View From The Road - Northbound Views
 Sheet 4 of 6

Scale	1:10,000	Drawn	HAH	Checked	AW	Approved	RM	Authorised	SB	
Document Number	A9P12-AMJ-ELS-Z_ZZZZZ_XX-DR-GI-0017								Revision	P02
Project	Originator	Volume								
Location	Type	Role	Number							

Reproduced by permission of Ordnance Survey on behalf of HMSO.
 © Crown copyright and database right 2017. All rights reserved.
 Ordnance Survey Licence number 100046668



- ~ Proposed Scheme
- Photo Locations
- Nature of view from existing A9
 - - Open Views
 - - Intermittent/Restricted Views
 - - No View/Enclosed
- Priority View (Refer to SEA Strategic Landscape Review)
- ➔ Direction of View
- View from Road Assessment (Refer to Section 9.4)
- ➔ Direction of View



Status: FINAL Substudy: B

Client: TRANSPORT SCOTLAND COMHDHAIL ALBA

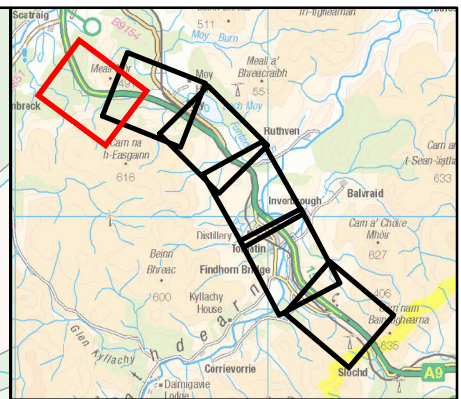
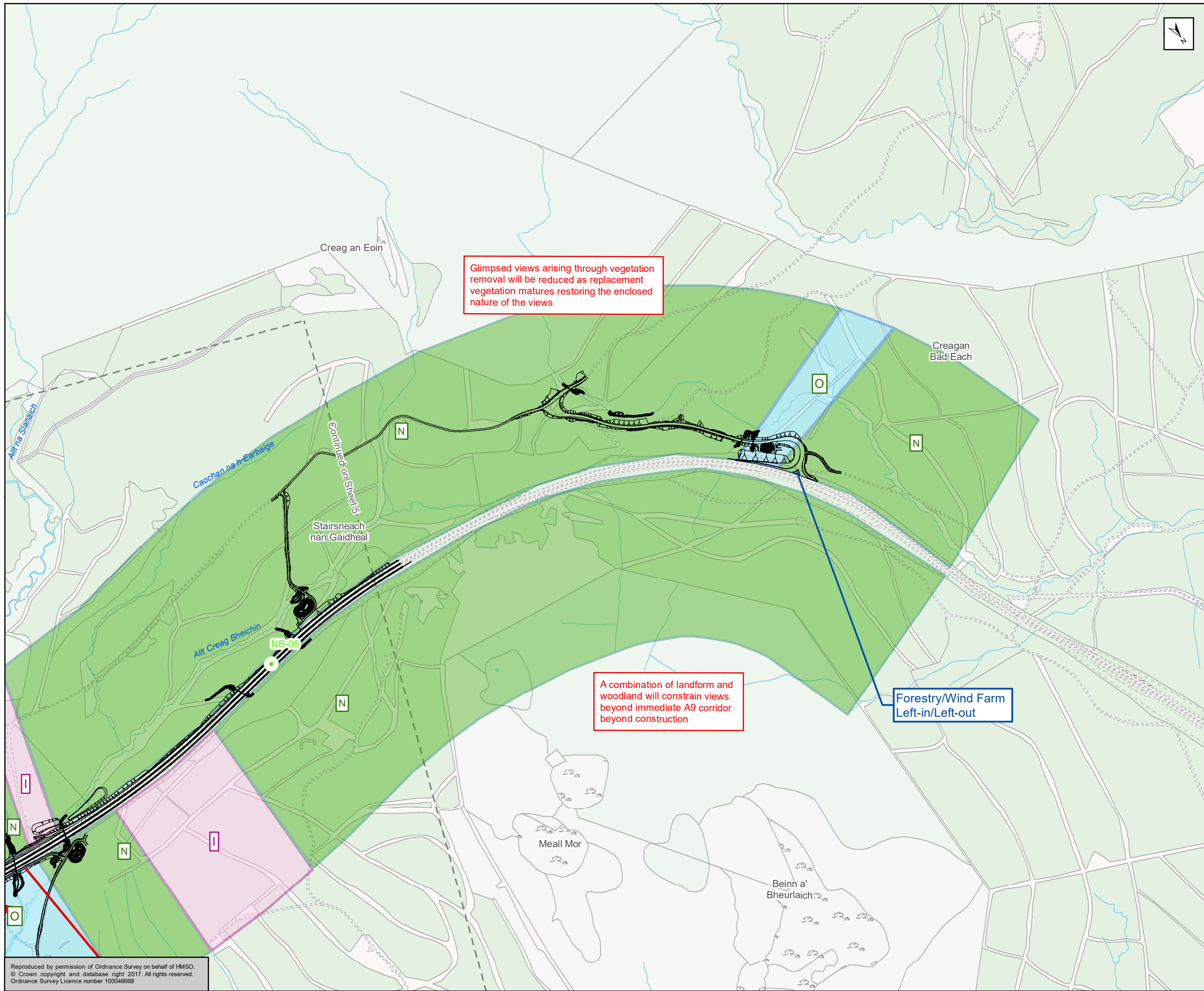
A9
DUALLING
PERTH TO INVERNESS
Tomatin to Moy

ATKINS mouchel

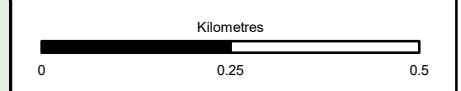
Figure 9.3e
A9 Mainline - View From The Road - Northbound Views
Sheet 5 of 6

Scale: 1:10,000	Drawn: HAH	Checked: AW	Approved: RM	Authorised: SB
Document Number: A9P12-AMJ-ELS-Z_ZZZZZ_XX-DR-GI-0018	Project: A9P12-AMJ-ELS-Z_ZZZZZ_XX-DR-GI-0018	Originator: HAH	Volume: 5	Revision: P02
Location:	Type:	Role:	Number:	

Reproduced by permission of Ordnance Survey on behalf of HMSO.
© Crown copyright and database right 2017. All rights reserved.
Ordnance Survey Licence number 100046668



- ~ Proposed Scheme
- Photo Locations
- Nature of view from existing A9
 - O - Open Views
 - I - Intermittent/Restricted Views
 - N - No View/Enclosed
- Priority View (Refer to SEA Strategic Landscape Review)
 - ➔ Direction of View
- View from Road Assessment (Refer to Section 9.4)
 - ➔ Direction of View



Status: FINAL Substudy: B

Client: TRANSPORT SCOTLAND COMHDHAIL ALBA



ATKINS mouchel

Figure 9.3f
A9 Mainline - View From The Road - Northbound Views
Sheet 6 of 6

Scale: 1:10,000	Drawn: HAH	Checked: AW	Approved: RM	Authorised: SB
Document Number: A9P12-AMJ-ELS-Z_ZZZZZ_XZ-DR-GI-0053	Project: A9P12-AMJ-ELS-Z_ZZZZZ_XZ-DR-GI-0053	Originator: ZZZZZ	Volume: XX	Revision: P02
Location:	Type:	Role:	Number:	

Reproduced by permission of Ordnance Survey on behalf of HMSO. © Crown copyright and database right 2017. All rights reserved. Ordnance Survey Licence number 100046668