

# Transport and Travel in Scotland

Developments and improvements

Jeanine Bezuijen



Scottish Government  
Riaghaltas na h-Alba  
gov.scot



A National Statistics publication for Scotland



## TRANSPORT AND TRAVEL

26 September 2017

### Transport and Travel in Scotland 2016

This bulletin provides the results of the Transport and Travel related questions asked in the Scottish Household Survey (including the travel diary) and uses data from a range of sources to provide context. The survey and travel diary had around 9,600 respondents in 2016.

This publication is split into 4 broad themes:

- Personal travel
- Motor vehicles, traffic and driving
- Public transport and aviation
- Walking and cycling

This bulletin provides updates to two National Indicators, which form part of the Scotland Performs national framework – congestion, which shows performance maintaining, and public and active travel to work, which shows performance maintaining.

#### Overview of travel trends in Scotland

Ferry, rail and air passenger numbers and distance cycled are estimated to have increased between 2012 and 2016, as has car traffic. Bus passenger numbers were lower in 2016 than five years ago. Compared to 2015, the biggest changes are an increase in the number of air passengers and a decrease in bus passenger numbers.

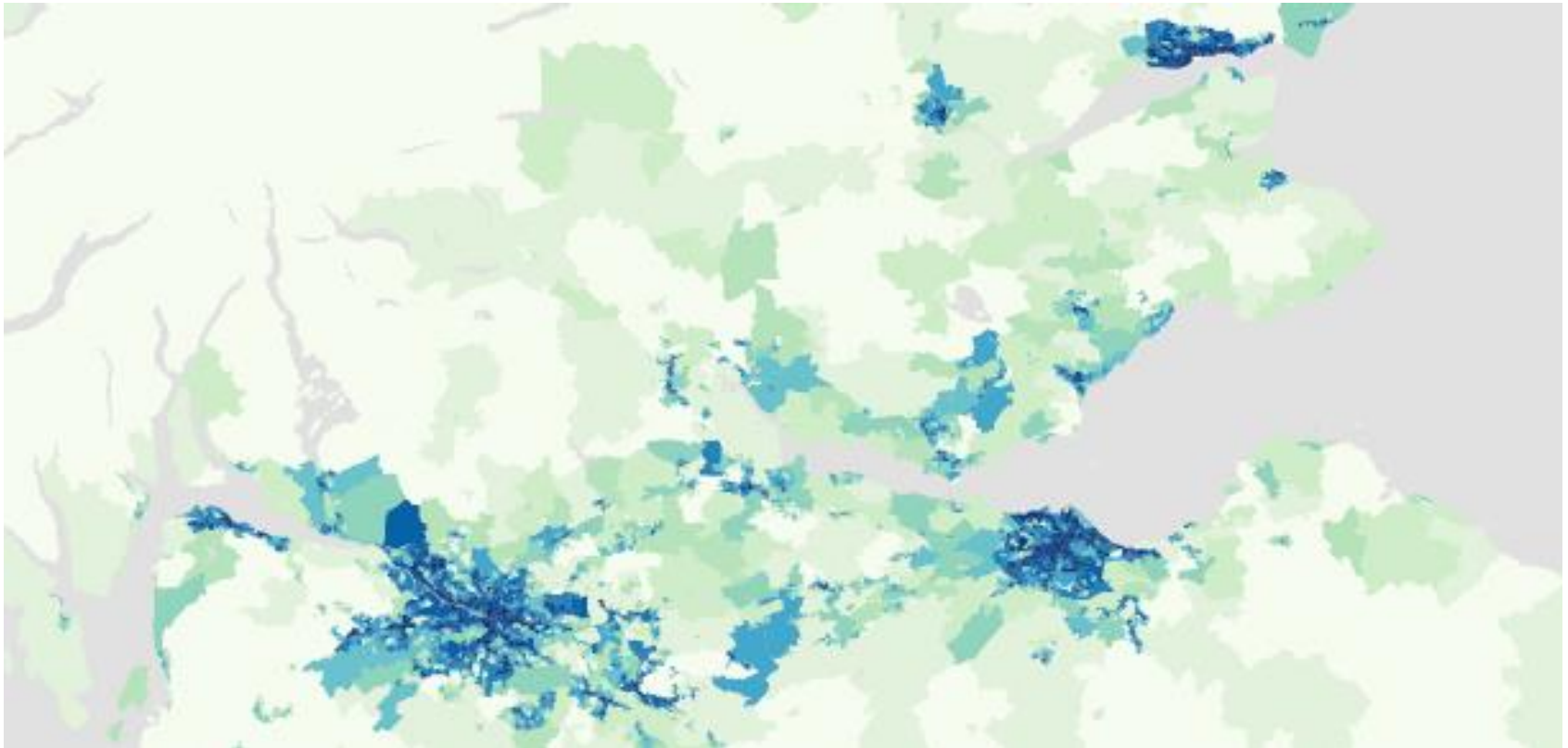
Table 1: Traffic and passenger numbers in Scotland, 2012 to 2016

	2012	2015	2016	% change over 1 year	% change over 5 years
Car traffic (m/veh km) on all roads &	33,777	34,669	35,362	2.0%	4.7%
Pedal cycles (m/veh km) on all roads &	310	343	352	2.6%	13.5%
ScotRail passengers (millions) <sup>§</sup>	83	93	94	1.1%	13.3%
Bus passengers (millions) <sup>§</sup>	421	409	393	-3.8%	-6.7%
Air passengers (millions)	22	26	27	3.8%	22.7%
Ferry passengers in Scotland (millions) <sup>#</sup>	8	8	8	0.0%	0.0%

Sources: DfT, ORR, CAA, ferry operators (Not all National Statistics)

Notes: \* Based on financial year, † provisional figures, § Does not include figures for passenger numbers on the Corran ferry service, # traffic estimates indicate the broad level of traffic, so year-on-year comparisons should be made with caution as they are estimated based on a small cross-section of Scottish roads, particularly for cycle traffic.

# Scottish Access to Bus Indicator



# SHS questionnaire review

- Flying questions now biennial
- Questions on car sharing and park and ride deleted
- Questions on reasons for not cycling and frequency of cycling for leisure deleted
- Questions on concessionary travel and cycle hire moved to biennial



# Discussion questions

1. What should be the scope of the publication? Exclusive focus on SHS or wider range of data?
2. How can we improve the presentation of the material?
3. Would there be any value in publishing topic reports in addition to the main publication?



# Contents

- Currently include data from a wide range of sources:
  - SHS
  - Scottish Transport Statistics
  - Reported Road Casualties
  - Scottish Access to Bus Indicator
- What data sources should we include?



# Presentation

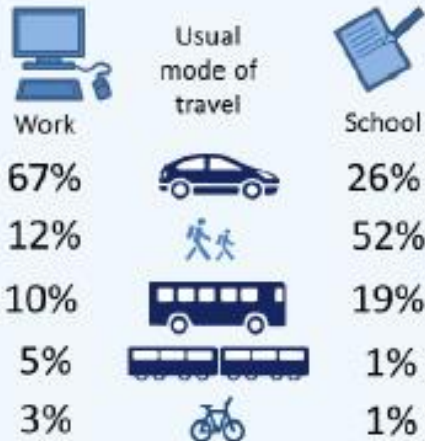
- Current publication
  - Text report
  - Tables
  - Infographic summary
- How can we make the results more accessible?



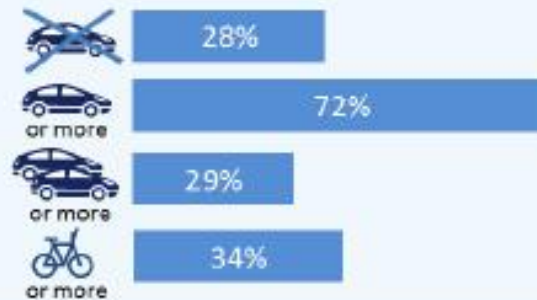
In Scotland in 2016,

# 75%

reported travelling the previous day,  
down from 77% in 2015.



Most households (72%) had one or more car or van available for private use in 2016. 34% of households had at least one bike available in 2016.



# 72%

Of people were satisfied with public transport in 2016 – a decrease from 74% the previous year.

Percentage of adults using each mode of travel at least once per week in 2016:



Source: Transport and Travel in Scotland (2016)



Scottish Government  
Riaghaltas na h-Alba  
gov.scot

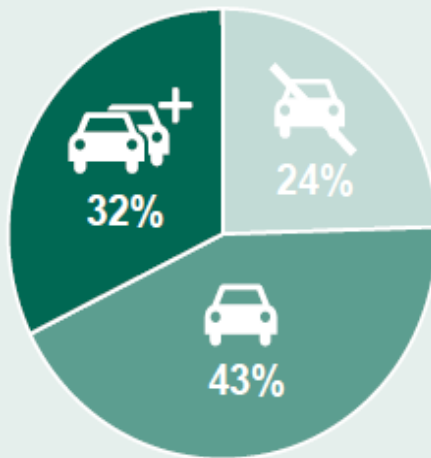


## How people travel - car [3]

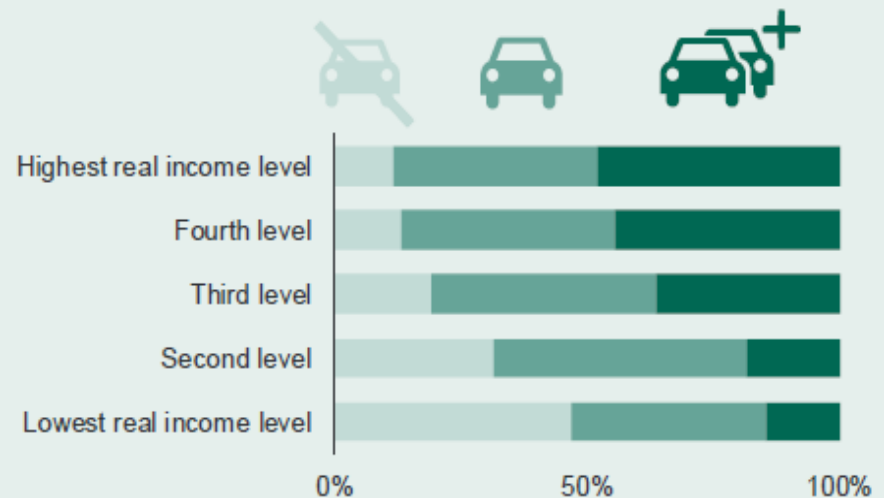


### Household car access

Household car availability, 2014



Household car availability by household income quintile, 2014



Source: National Travel Survey Factsheet (2014)



Scottish Government  
Riaghaltas na h-Alba  
gov.scot

## Characteristics of adults

---

Over a quarter (26%) are between 45 and 59-years old.

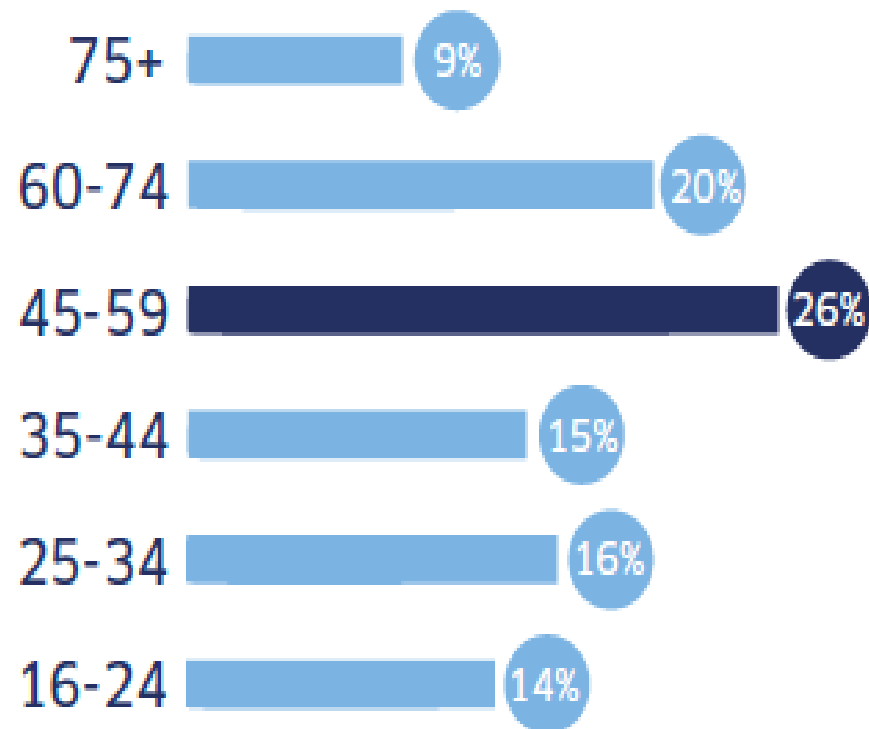
Over a half (55%) are aged 45-years or more.

There are more women (52%) than men (48%).

Three in ten adults reported a long-term physical or mental health condition.

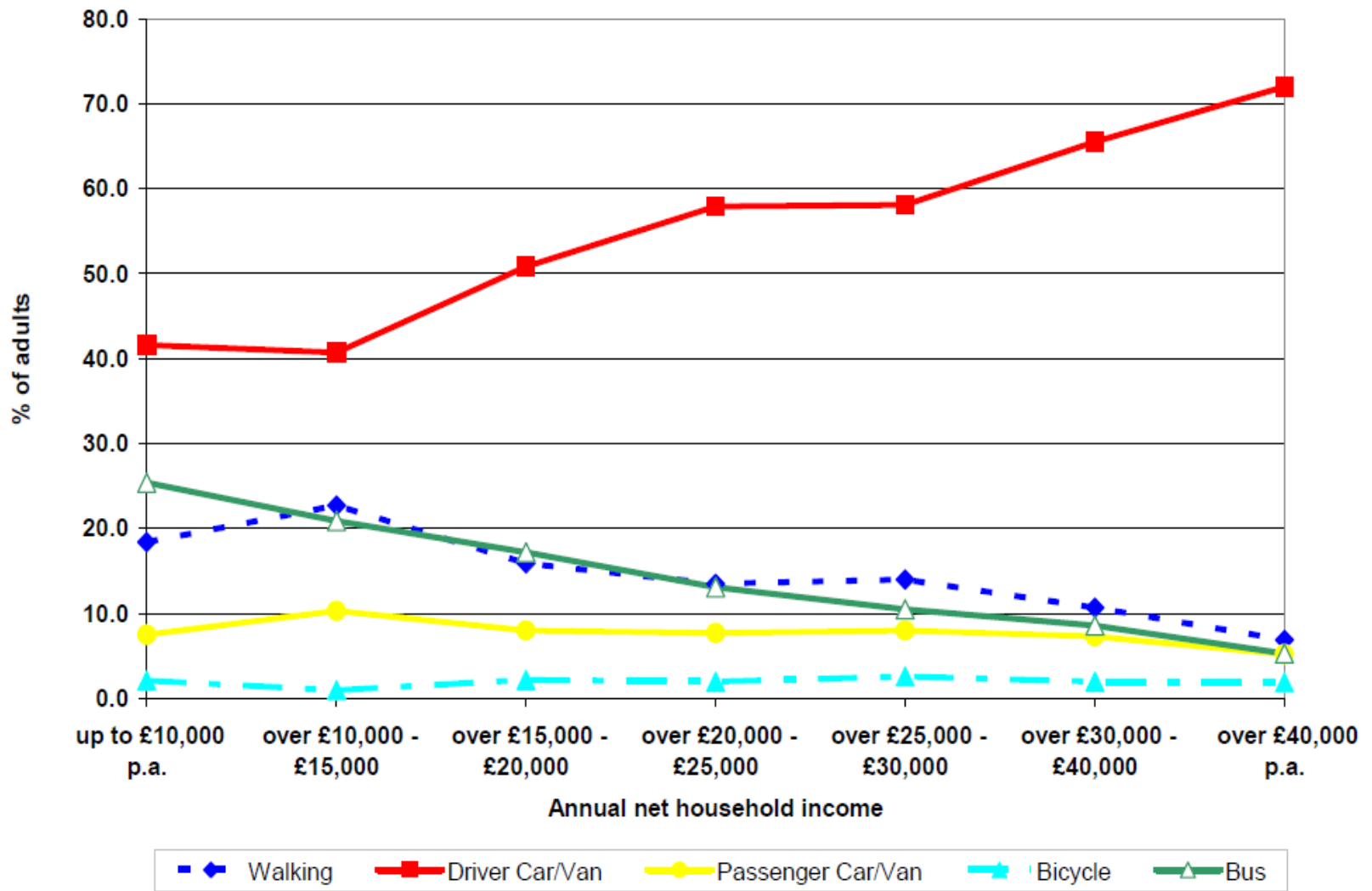
## Age of adults

---



Source: Scottish Household Survey Key Findings (2016)





Source: Transport and Travel in Scotland (2011)



# Topic reports

- SHS data is used in internal consultancy projects throughout the year
- Examples: causes of bus patronage decline, active travel
- Would there be any interest in making some of this material available as topic reports?



# Discussion questions

1. What should be the scope of the publication? Exclusive focus on SHS or wider range of data?
2. How can we improve the presentation of the material?
3. Would there be any value in publishing topic reports in addition to the main publication?

